

WAAS CH <b>81831</b> <b>W15A</b>	APP CRS <b>157°</b>	Rwy Idg TDZE Apt Elev	<b>3808</b> <b>1230</b> <b>1230</b>
--	------------------------	-----------------------------	---

# RNAV (GPS) RWY 15

LAGO VISTA TX-RUSTY ALLEN (RYW)

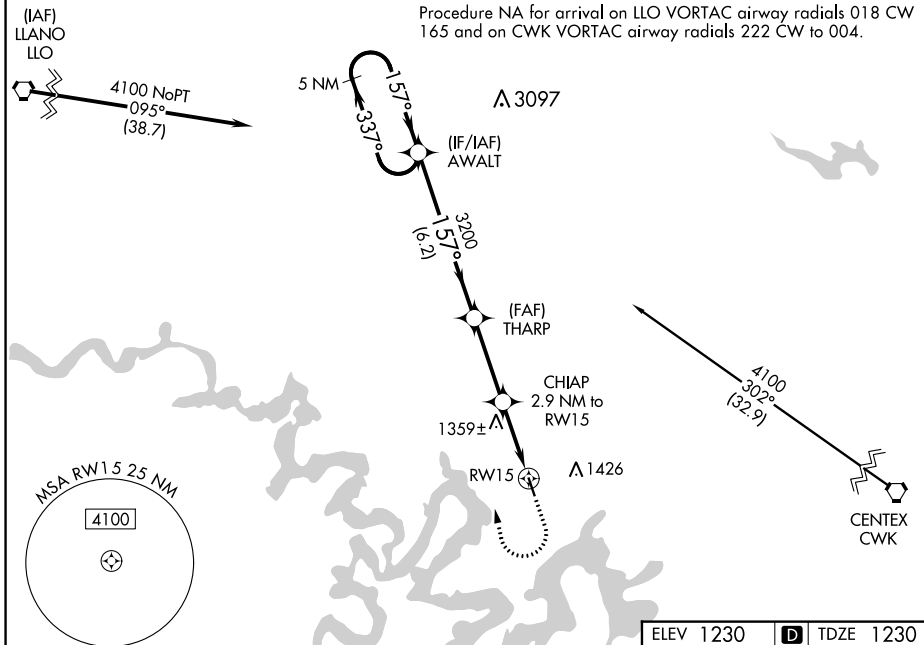
▼ For uncompensated Baro-VNAV systems, LNAV/VNAV NA below -17°C (2°F) or above 54°C (130°F). DME/DME RNP-0.3 NA. Rwy 15 helicopter visibility reduction below  $\frac{3}{4}$  SM NA.

MISSED APPROACH: Climb to 1700 then climbing right turn to 4100 direct AWALT and hold.

ASOS  
**119.375**

AUSTIN APP CON  
**119.0 370.85**

UNICOM  
**122.725 (CTAF)** **0**

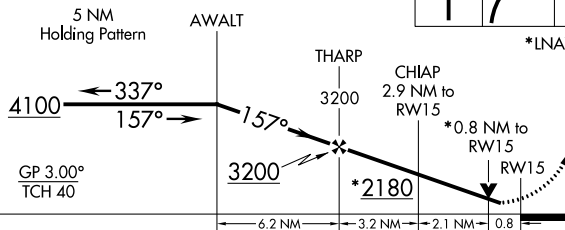


VGSI and RNAV glidepath not coincident (VGSI Angle 4.00/TCH 56).

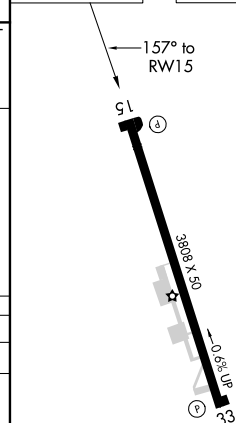
1700 4100 AWALT



\*LNAV only.



ELEV 1230 **D** TDZE 1230



CATEGORY	A	B	C	D
LPV DA	1480-1	250 (300-1)		NA
LNAV/VNAV DA	1641-1 $\frac{3}{8}$	411 (500-1 $\frac{3}{8}$ )		NA
LNAV MDA	1620-1	390 (400-1)		NA
<b>C</b> CIRCLING	1660-1 430 (500-1)	1860-1 630 (700-1)		NA

MIRL Rwy 15-33 **0**