

**TOP ALTITUDE:
ASSIGNED BY ATC**

AEROZ TWO DEPARTURE (RNAV)
(AEROZ2.AEROZ) 22APR21

(AEROZ2.AEROZ) 21112
AEROZ TWO DEPARTURE (RNAV) AL-6111

ASOS
119.375
UNICOM (CTAF)
122.725
AUSTIN DEP CON
119.0 370.85

SAN ANGELO
SJT

TAKEOFF MINIMUMS
Rwys 15, 33: Standard.

NOTE: RADAR required.
NOTE: DME/DME/IRU or GPS required.
NOTE: RNAV 1.

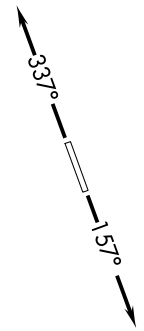


FL180
293°
(91)

AEROZ

293°
(33)

AMUSE
5000



NOTE: Chart not to scale.

DEPARTURE ROUTE DESCRIPTION

TAKEOFF RUNWAY 15: Climb on heading 157° or as assigned by ATC for vectors to cross AMUSE at or above 5000, thence....
TAKEOFF RUNWAY 33: Climb on heading 337° or as assigned by ATC for vectors to cross AMUSE at or above 5000, thence....

... on track 293° to AEROZ, then on SAN ANGELO TRANSITION. Maintain altitude assigned by ATC. Expect filed altitude 10 minutes after departure.

SAN ANGELO TRANSITION (AEROZ2.SJT)

LAGO VISTA, TEXAS
LAGO VISTA TX - RUSTY ALLEN (R.Y.W)

LAGO VISTA TX - RUSTY ALLEN (R.Y.W)
LAGO VISTA, TEXAS

(BNDIA3.BNDIA) 21112

AL-6111 (FAA)

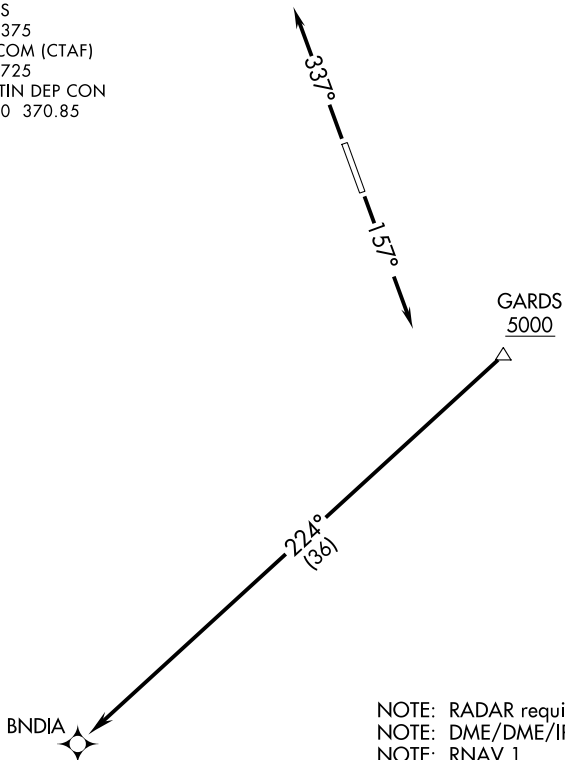
LAGO VISTA TX - RUSTY ALLEN (RYW)

BNDIA THREE DEPARTURE (RNAV)

LAGO VISTA, TEXAS

ASOS
119.375
UNICOM (CTAF)
122.725
AUSTIN DEP CON
119.0 370.85

**TOP ALTITUDE:
ASSIGNED BY ATC**



NOTE: RADAR required.
NOTE: DME/DME/IRU or GPS required.
NOTE: RNAV 1.

TAKEOFF MINIMUMS:
Rwys 15, 33: Standard.

NOTE: Chart not to scale.

DEPARTURE ROUTE DESCRIPTION

TAKEOFF RUNWAY 15: Climb on heading 157° or as assigned by ATC for vectors to cross GARDS at or above 5000, thence....

TAKEOFF RUNWAY 33: Climb on heading 337° or as assigned by ATC for vectors to cross GARDS at or above 5000, thence....

....on track 224° to BNDIA. Maintain altitude assigned by ATC. Expect filed altitude 10 minutes after departure.

BNDIA THREE DEPARTURE (RNAV)
(BNDIA3.BNDIA) 22APR21

LAGO VISTA, TEXAS
LAGO VISTA TX - RUSTY ALLEN (RYW)

SC-3, 22 APR 2021 to 20 MAY 2021

SC-3, 22 APR 2021 to 20 MAY 2021

(ELOEL3.ELOEL) 21112

LAGO VISTA TX - RUSTY ALLEN (RYW)

ELOEL THREE DEPARTURE (RNAV) AL-6111 (FAA)

LAGO VISTA, TEXAS

**TOP ALTITUDE:
ASSIGNED BY ATC**

ASOS
119.375
UNICOM (CTAF)
122.725
AUSTIN DEP CON
119.0 370.85



ABILENE
ABI

FL 180
307°
(120)

TAKEOFF MINIMUMS:
Rwys 15, 33: Standard.

NOTE: RADAR required.
NOTE: DME/DME/IRU or GPS required.
NOTE: RNAV 1.

FORSS

KLNGR

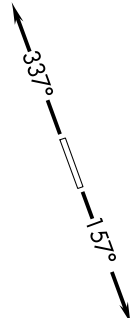
10500
*2700
338°
(10)

10500
*2700
329°
(18)

ELOEL

338°
(10)

WLMRT
5000



NOTE: Chart not to scale.



DEPARTURE ROUTE DESCRIPTION

TAKEOFF RUNWAY 15: Climb on heading 157° or as assigned by ATC for vectors to cross WLMRT at or above 5000, thence....

TAKEOFF RUNWAY 33: Climb on heading 337° or as assigned by ATC for vectors to cross WLMRT at or above 5000, thence....

... on track 338° to ELOEL. then on transition. Maintain altitude assigned by ATC. Expect filed altitude 10 minutes after departure.

ABILENE TRANSITION (ELOEL3.ABI)

FORSS TRANSITION (ELOEL3.FORSS)

KLNGR TRANSITION (ELOEL3.KLNGR)

SC-3, 22 APR 2021 to 20 MAY 2021

SC-3, 22 APR 2021 to 20 MAY 2021

ELOEL THREE DEPARTURE (RNAV)

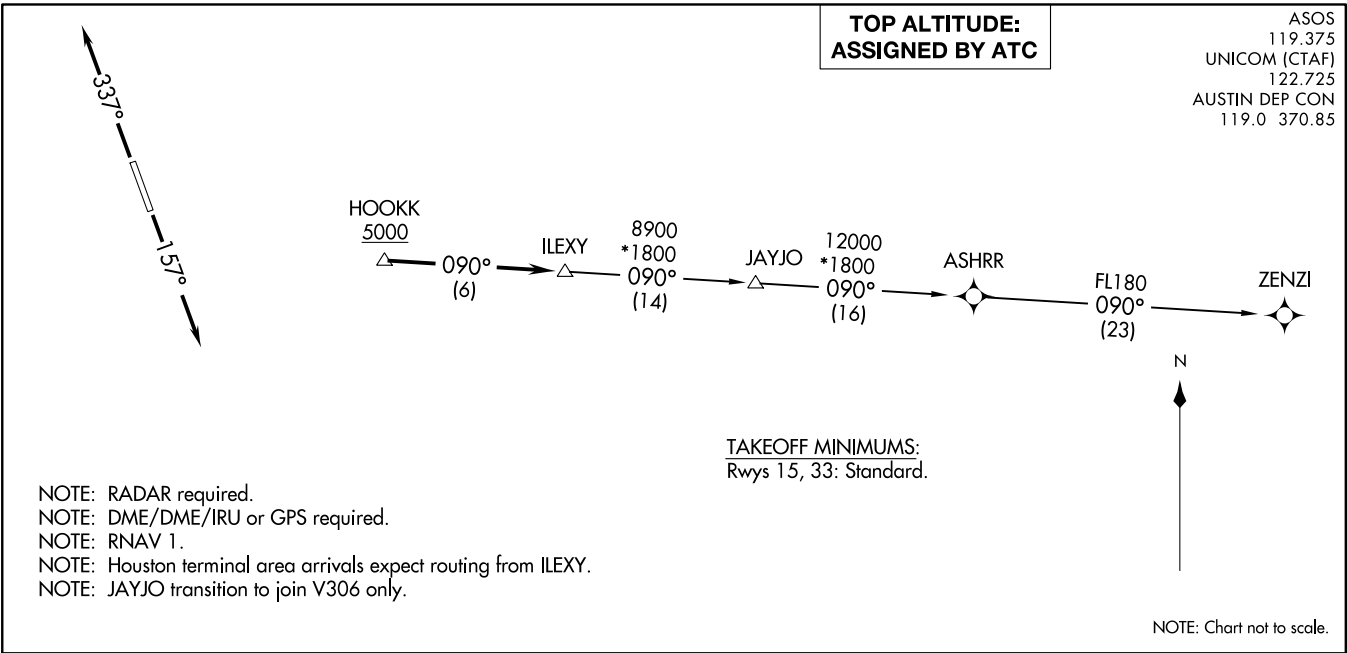
(ELOEL3.ELOEL) 22APR21

LAGO VISTA, TEXAS

LAGO VISTA TX - RUSTY ALLEN (RYW)

ILEXY THREE DEPARTURE (RNAV)
(ILEXY3.ILEXY) 22APR21

LAGO VISTA TX - RUSTY ALLEN (R.Y.W.)
LAGO VISTA, TEXAS



(ILEXY3.ILEXY) 21112
ILEXY THREE DEPARTURE (RNAV) AL-6111 (FAA)

LAGO VISTA TX - RUSTY ALLEN (R.Y.W.)
LAGO VISTA, TEXAS

DEPARTURE ROUTE DESCRIPTION

TAKEOFF RUNWAY 15: Climb on heading 157° or as assigned by ATC for vectors to cross HOOKK at or above 5000, thence. . . .

TAKEOFF RUNWAY 33: Climb on heading 337° or as assigned by ATC for vectors to cross HOOKK at or above 5000, thence. . . .

. . . . on track 090° to ILEXY, then on transition. Maintain altitude assigned by ATC. Expect filed altitude 10 minutes after departure.

JAYJO TRANSITION (ILEXY3.JAYJO)

ZENZI TRANSITION (ILEXY3.ZENZI)

(MUCKY3.MUCKY) 21112

AL-6111 (FAA)

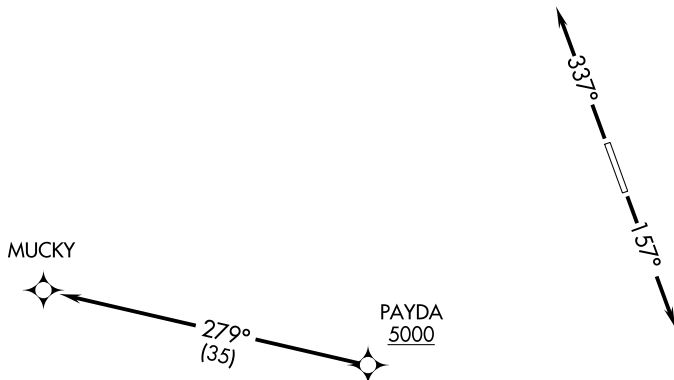
LAGO VISTA TX - RUSTY ALLEN (RYW)

MUCKY THREE DEPARTURE (RNAV)

LAGO VISTA, TEXAS

ASOS
119.375
UNICOM (CTAF)
122.725
AUSTIN DEP CON
119.0 370.85

**TOP ALTITUDE:
ASSIGNED BY ATC**



TAKEOFF MINIMUMS:
Rwys 15, 33: Standard.

NOTE: RADAR required.
NOTE: DME/DME/IRU or GPS required.
NOTE: RNAV 1.

NOTE: Chart not to scale.



DEPARTURE ROUTE DESCRIPTION

TAKEOFF RUNWAY 15: Climb on heading 157° or as assigned by ATC for vectors to cross PAYDA at or above 5000, thence....

TAKEOFF RUNWAY 33: Climb on heading 337° or as assigned by ATC for vectors to cross PAYDA at or above 5000, thence....

... on track 279° to MUCKY. Maintain altitude assigned by ATC.
Expect filed altitude 10 minutes after departure.

MUCKY THREE DEPARTURE (RNAV)

(MUCKY3.MUCKY) 22APR21

LAGO VISTA, TEXAS

LAGO VISTA TX - RUSTY ALLEN (RYW)

SC-3, 22 APR 2021 to 20 MAY 2021

SC-3, 22 APR 2021 to 20 MAY 2021

(SAYBR3.SAYBR) 21112

SAYBR THREE DEPARTURE (RNAV)

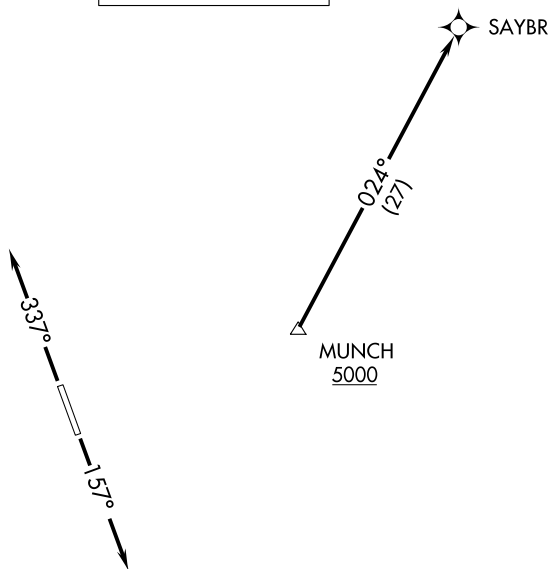
AL-6111 (FAA)

LAGO VISTA TX - RUSTY ALLEN (RYW)

LAGO VISTA, TEXAS

ASOS
119.375
UNICOM (CTAF)
122.725
AUSTIN DEP CON
119.0 370.85

**TOP ALTITUDE:
ASSIGNED BY ATC**



NOTE: RADAR required.
NOTE: DME/DME/IRU or GPS required.
NOTE: RNAV 1.
NOTE: For DFW terminal area arrivals at FL230 or below only.

TAKEOFF MINIMUMS

Rwys 15, 33: Standard.

NOTE: Chart not to scale.



DEPARTURE ROUTE DESCRIPTION

TAKEOFF RUNWAY 15: Climb on heading 157° or as assigned by ATC for vectors to cross MUNCH at or above 5000, thence....

TAKEOFF RUNWAY 33: Climb on heading 337° or as assigned by ATC for vectors to cross MUNCH at or above 5000, thence....

... on track 024° to SAYBR. Maintain altitude assigned by ATC.
Expect filed altitude 10 minutes after departure.

SAYBR THREE DEPARTURE (RNAV)

(SAYBR3.SAYBR) 22APR21

LAGO VISTA, TEXAS

LAGO VISTA TX - RUSTY ALLEN (RYW)

SC-3, 22 APR 2021 to 20 MAY 2021

SC-3, 22 APR 2021 to 20 MAY 2021