

# ALICO SEVEN DEPARTURE

**TOP ALTITUDE:  
4000**

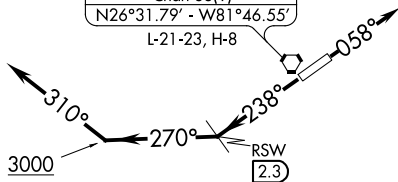
ORLANDO  
112.2 ORL :--:--  
Chan 59  
N28°32.56' - W81°20.10'  
L-21-23-24, H-8

ST. PETERSBURG  
116.4 PIE :--:--  
Chan 111  
N27°54.47' - W82°41.06'  
L-21-24, H-8

LAKELAND  
116.0 LAL :--:--  
Chan 107  
N27°59.17' - W82°00.83'  
L-21-24, H-8

SARASOTA  
117.0 SRQ :--:--  
Chan 117  
N27°24.42' - W82°33.82'  
L-21-23, H-8

LEE COUNTY  
114.15 RSW :--:--  
Chan 88(Y)  
N26°31.79' - W81°46.55'  
L-21-23, H-8



TAKEOFF MINIMUMS  
Rwys 6, 24: Standard.

- D-ATIS 124.65
- CINC DEL 132.075
- CPDLC 132.075
- GND CON 121.9 257.8
- FORT MEYERS TOWER ★ 128.75 (CTAF) 257.8
- FORT MEYERS DEP CON ★ 126.8 306.2 (Rwy 6)
- 134.425 306.2 (Rwy 24)
- MIAMI CENTER 134.75 322.5
- UNICOM 122.95

FT. LAUDERDALE  
114.4 FL :--:--  
Chan 91  
N26°04.44' - W80°09.99'  
L-23, H-8

KEY WEST  
113.5 EYW :--:--  
Chan 82  
N24°35.15' - W81°48.03'  
L-21-23, H-8

NOTE: DME required.  
NOTE: RADAR required.

NOTE: Chart not to scale.



## DEPARTURE ROUTE DESCRIPTION

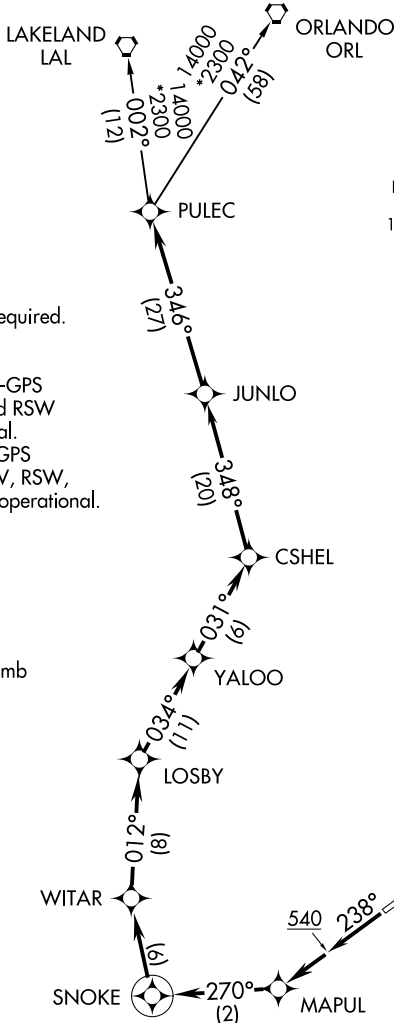
TAKEOFF RUNWAY 6: Climb on heading 058° or as assigned for vectors to assigned route.

TAKEOFF RUNWAY 24: Climb on heading 238° or as assigned until RSW 2.3 DME, then turn right to heading 270°. Leaving 3000, turn right heading 310°. Expect RADAR vectors to assigned route.

All aircraft maintain 4000 or assigned lower altitude. Expect further clearance to filed altitude within 10 minutes after departure.

# CSHEL SIX DEPARTURE (RNAV)

**TOP ALTITUDE:  
4000**



- D-ATIS 124.65
- CLNC DEL 132.075
- CPDLC
- GND CON 121.9 257.8
- FORT MEYERS TOWER ★ 128.75 (CTAF) 257.8
- FORT MEYERS DEP CON ★ 126.8 306.2 (Rwy 6)
- 134.425 306.2 (Rwy 24)
- MIAMI CENTER 134.75 322.5
- UNICOM 122.95

- NOTE: RADAR required.
- NOTE: DME/DME/IRU or GPS required.
- NOTE: RNAV 1.
- NOTE: For turbojet aircraft only.
- NOTE: Takeoff Rwy 24 - For non-GPS equipped aircraft LBV and RSW DME's must be operational.
- NOTE: Takeoff Rwy 6 - For non-GPS equipped aircraft LAL, LBV, RSW, and SRQ DME's must be operational.

### TAKEOFF MINIMUMS

Rwys 6, 24: Standard with a climb of 500' per NM to 540.

NOTE: Chart not to scale.

### DEPARTURE ROUTE DESCRIPTION

**TAKEOFF RUNWAY 6:** Climb heading 058° to 540, then on heading 058° or assigned by ATC, for vectors to CSHEL, then on depicted route to PULEC, thence. . . .

**TAKEOFF RUNWAY 24:** Climb heading 238° to 540, then direct MAPUL, then climb on track 270° to SNOKE, then right turn direct WITAR, then on depicted route to PULEC, thence. . . .

. . . on (transition). Maintain 4000, or as assigned by ATC, expect filed altitude/flight level 10 minutes after departure.

LAKELAND TRANSITION (CSHEL6.LAL)

ORLANDO TRANSITION (CSHEL6.ORL)

# CSHEL SIX DEPARTURE (RNAV)

# MOOKY SIX DEPARTURE

**TOP ALTITUDE:  
3000**

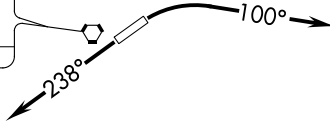
ST. PETERSBURG  
116.4 PIE   
Chan 111  
N27°54.47'-W82°41.06'  
L-21-24, H-8

ORLANDO  
112.2 ORL   
Chan 59  
N28°32.56'-W81°20.10'  
L-21-23-24, H-8

LAKELAND  
116.0 LAL   
Chan 107  
N27°59.17'-W82°00.83'  
L-21-24, H-8

SARASOTA  
117.0 SRQ   
Chan 117  
N27°24.42'-W82°33.82'  
L-21-23, H-8

LEE COUNTY  
114.15 RSW   
Chan 88(Y)  
N26°31.79'-W81°46.55'  
L-21-23, H-8



D-ATIS  
124.65  
CLNC DEL  
132.075  
CPDLC  
GND CON  
121.9 257.8  
FORT MEYERS TOWER \*  
128.75 (CTAF) 257.8  
FORT MEYERS DEP CON \*  
124.125 371.85 (Rwy 6)  
134.425 306.2 (Rwy 24)  
MIAMI CENTER  
134.75 322.5

TAKEOFF MINIMUMS  
Rwy 6, 24: Standard.

NOTE: RADAR required.

NOTE: Chart not to scale.

KEY WEST  
113.5 EYW   
Chan 82  
N24°35.15'-W81°48.03'  
L-21-23, H-8

## DEPARTURE ROUTE DESCRIPTION

TAKEOFF RUNWAY 6: Climbing right turn heading 100° or as assigned for RADAR vectors to join filed route, thence . . . .

TAKEOFF RUNWAY 24: Climb on heading 238° or as assigned for RADAR vectors to join filed route, thence . . . .

. . . . all aircraft maintain 3000 or assigned altitude. Expect further clearance to filed altitude within 10 minutes after departure.

# SCUBY SEVEN DEPARTURE

FORT MYERS, FLORIDA

**TOP ALTITUDE:  
3000**

ST. PETERSBURG  
116.4 PIE :--:--  
Chan 111  
N27°54.47'-W82°41.06'  
L-21-24, H-8

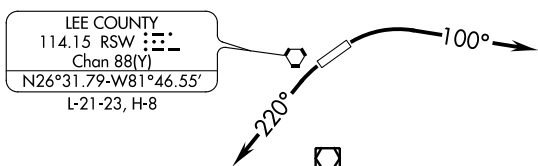
ORLANDO  
112.2 ORL :--:--  
Chan 59  
N28°32.56'-W81°20.10'  
L-21-23-24, H-8

LAKELAND  
116.0 LAL :--:--  
Chan 107  
N27°59.17'-W82°00.83'  
L-21-24, H-8

SARASOTA  
117.0 SRQ :--:--  
Chan 117  
N27°24.42'-W82°33.82'  
L-21-23, H-8

LA BELLE  
110.4 LBV :--:--  
Chan 41  
N26°49.69'-W81°23.49'  
L-21-23, H-8

PAHOKEE  
115.4 PHK :--:--  
Chan 101  
N26°46.96'-W80°41.49'  
L-23, H-8



LEE COUNTY  
114.15 RSW :--:--  
Chan 88(Y)  
N26°31.79'-W81°46.55'  
L-21-23, H-8

CYPRESS  
108.6 CYC :--:--  
Chan 23  
N26°09.21'-W81°46.69'  
L-21-23, H-8

KEY WEST  
113.5 EYW :--:--  
Chan 82  
N24°35.15'-W81°48.03'  
L-21-23, H-8

- D-ATIS 124.65
- CLNC DEL 132.075
- CPDLC
- GND CON 121.9 257.8
- ★ FORT MYERS TOWER 128.75 (CTAF) 257.8
- ★ FORT MYERS DEP CON 124.125 371.85
- MIAMI CENTER 134.75 322.5

TAKEOFF MINIMUMS  
Rwy 6, 24: Standard.

NOTE: Chart not to scale.

## DEPARTURE ROUTE DESCRIPTION

TAKEOFF RUNWAY 6: Climbing right turn heading 100° or as assigned for vectors to join filed route, thence . . . .

TAKEOFF RUNWAY 24: Climbing left turn heading 220° or as assigned for vectors to join filed route, thence . . . .

. . . . all aircraft maintain 3000 or assigned altitude. Expect further clearance to filed altitude within 10 minutes after departure.

SE-3, 22 FEB 2024 to 21 MAR 2024

SE-3, 22 FEB 2024 to 21 MAR 2024