

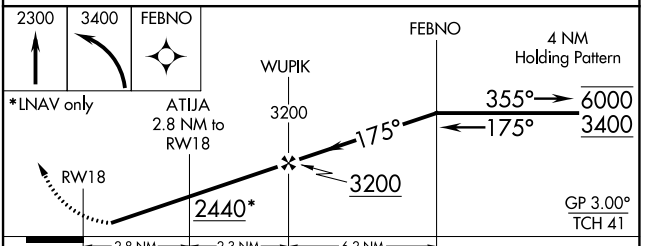
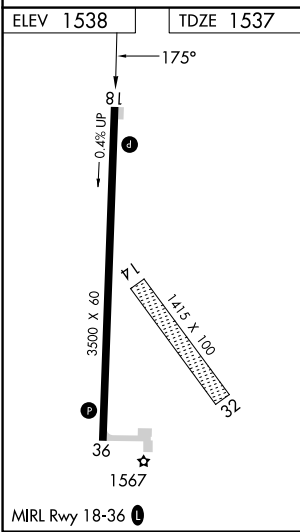
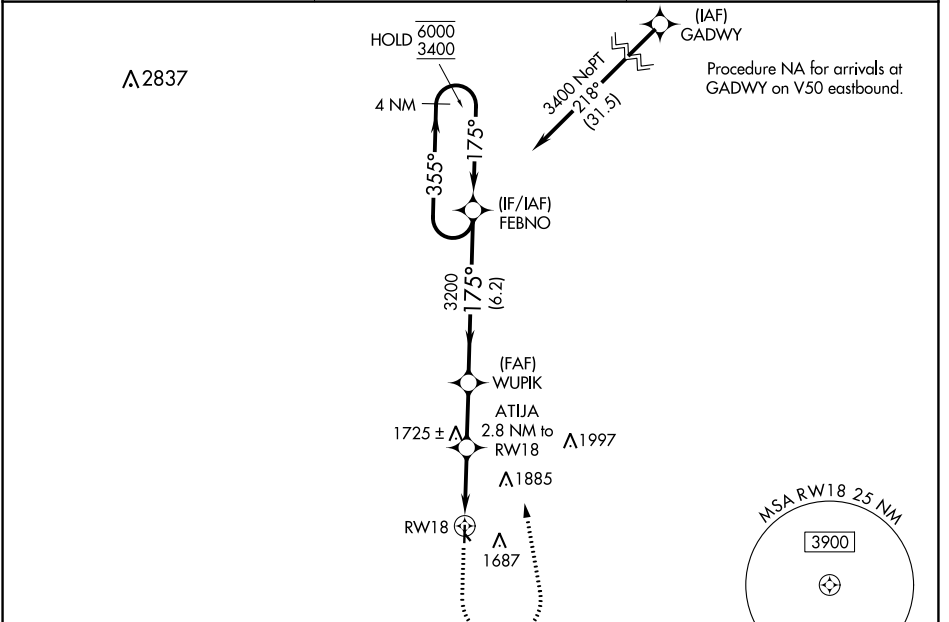
WAAS CH 87025 W18A	APP CRS 175°	Rwy Idg TDZE Apt Elev	3500 1537 1538
---------------------------------	------------------------	-----------------------------	---

RNAV (GPS) RWY 18

BELLEVILLE MUNI (R.P.B)

RNP APCH.	MISSED APPROACH: Climb to 2300 then climbing left turn to 3400 direct FEBNO and hold.
<p>▼ Circling NA to Rwys 14 and 32. Rwy 18 helicopter visibility reduction below 3/4 SM NA. Baro-VNAV NA. Use Concordia altimeter setting.</p> <p>▲ NA</p>	

CNK ASOS 123.825	MINNEAPOLIS CENTER 126.4 317.7	UNICOM 122.8 (CTAF)
----------------------------	--	-------------------------------



CATEGORY	A	B	C	D
LPV DA	1832-1 295 (300-1)			NA
LNAV/VNAV DA	1890-1¼ 353 (400-1¼)			NA
LNAV MDA	2020-1	483 (500-1)	2020-1¾ 483 (500-1¾)	NA
CIRCLING	2080-1 542 (600-1)	2220-1 682 (700-1)	2280-2¼ 742 (800-2¼)	NA

NC-2, 22 FEB 2024 to 21 MAR 2024

NC-2, 22 FEB 2024 to 21 MAR 2024

WAAS CH 69425 W36A	APP CRS 355°	Rwy Idg TDZE 1538 Apt Elev 1538
--	------------------------	---

RNAV (GPS) RWY 36

BELLEVILLE MUNI (R.P.B)

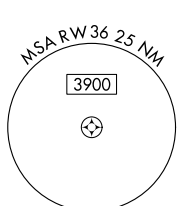
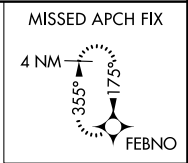
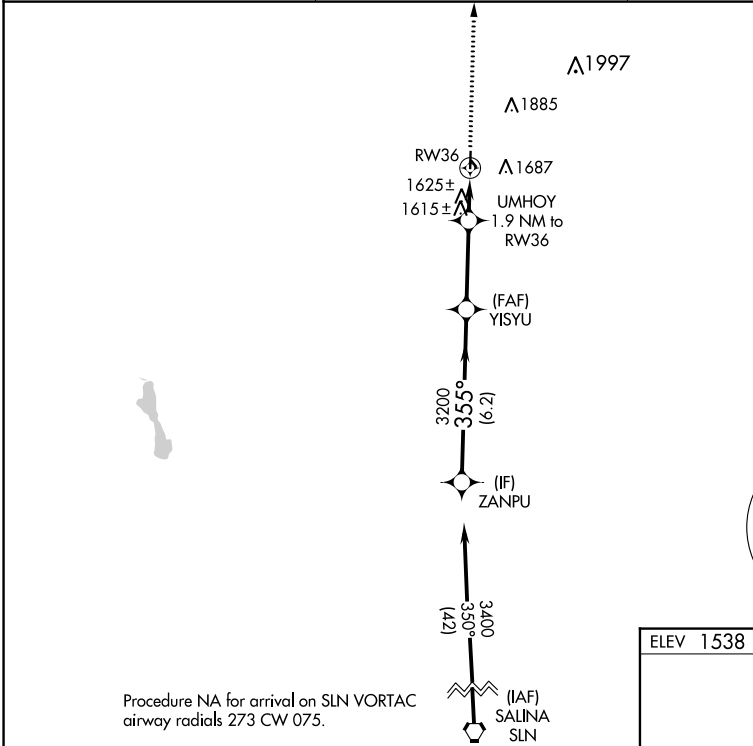
RNP APCH.
 NA Circling NA to Rwy's 14 and 32. Use Concordia altimeter setting.

MISSED APPROACH: Climb to 3400 direct FEBNO and hold.

CNK ASOS
123.825

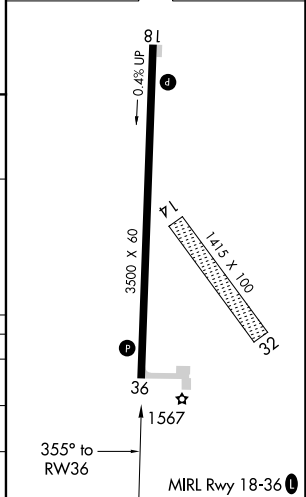
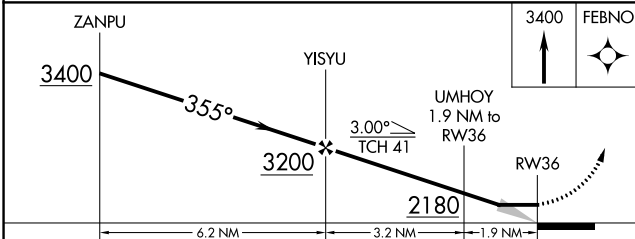
MINNEAPOLIS CENTER
126.4 317.7

UNICOM
122.8 (CTAF)



Procedure NA for arrival on SLN VORTAC airway radials 273 CW 075.

ELEV 1538 TDZE 1538



CATEGORY	A	B	C	D
LP MDA	1920-1	382 (400-1)	1920-1 1/8 382 (400-1 1/8)	NA
LNVA MDA	1920-1	382 (400-1)	1920-1 1/8 382 (400-1 1/8)	NA
CIRCLING	2080-1 542 (600-1)	2220-1 682 (700-1)	2280-2 1/4 742 (800-2 1/4)	NA

NC-2, 22 FEB 2024 to 21 MAR 2024

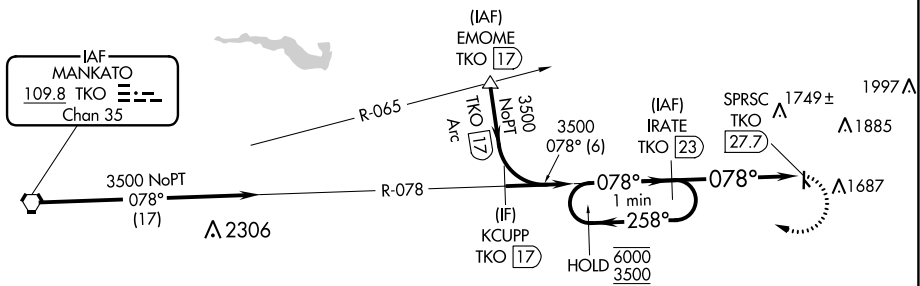
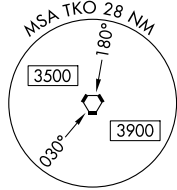
NC-2, 22 FEB 2024 to 21 MAR 2024

VORTAC TKO 109.8 Chan 35	APP CRS 078°	Rwy Idg TDZE Apt Elev 1538	N/A N/A 1538
--	------------------------	--	---

VOR-A
BELLEVILLE MUNI (R/PB)

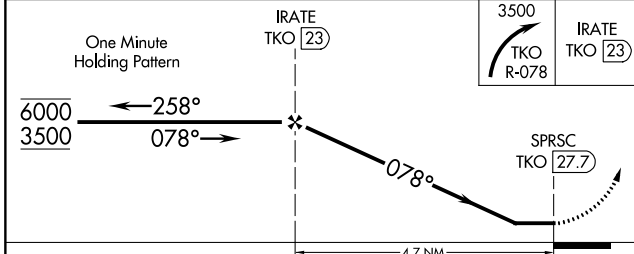
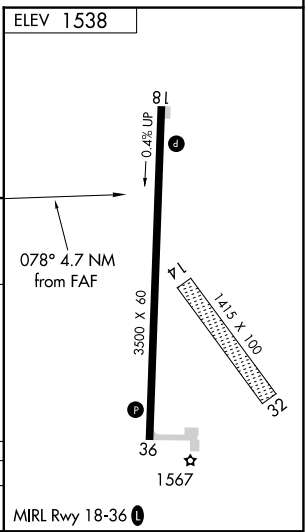
DME required.	<p>▼ Circling NA to Rwy 14 and 32. ▲ NA Use Concordia altimeter setting.</p>	MISSED APPROACH: Climbing right turn to 3500 on TKO VORTAC R-078 to IRATE/TKO 23 DME and hold.
---------------	--	--

CNK ASOS 123.825	MINNEAPOLIS CENTER 126.4 317.7	UNICOM 122.8 (CTAF) 0
----------------------------	--	---------------------------------



NC-2, 22 FEB 2024 to 21 MAR 2024

NC-2, 22 FEB 2024 to 21 MAR 2024



CATEGORY	A	B	C	D
CIRCLING	2080-1 542 (600-1)	2220-1¼ 682 (700-1¼)	2280-2¼ 742 (800-2¼)	NA