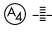


LOC/DME I-RMN	APP CRS	Rwy Idg	<b>5000</b>
<b>108.75</b>	<b>329°</b>	TDZE	<b>196</b>
Chan <b>24 (Y)</b>		Apt Elev	<b>212</b>

# ILS or LOC RWY 33

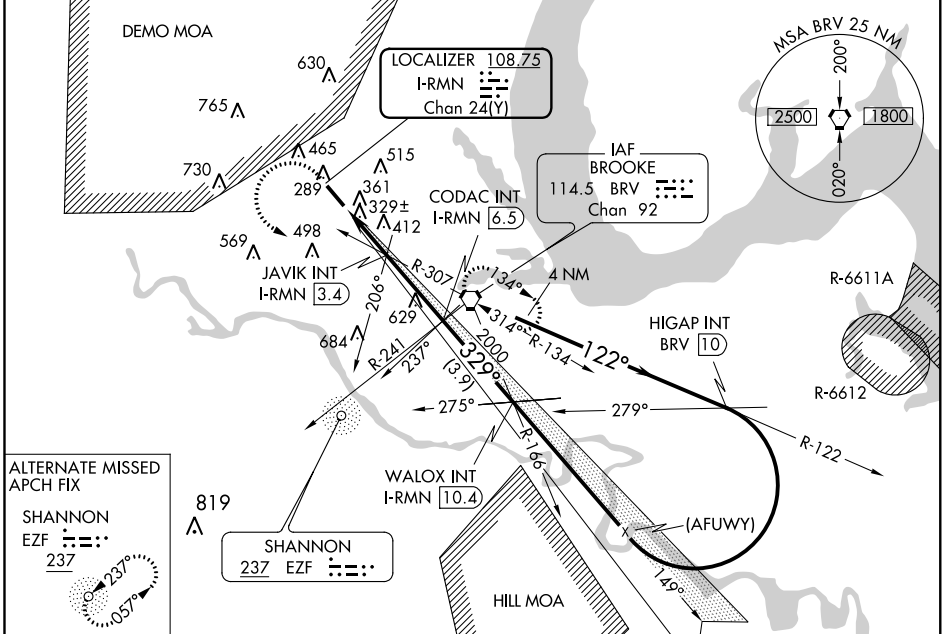
STAFFORD RGNL (RMN)

**▽** If local altimeter setting not received, use Shannon, Fredericksburg, VA altimeter setting and increase all DH/MDAs 40 feet.  
**△NA** Inoperative table does not apply to S-ILS 33 and to S-LOC Cats B and C. DME or ADF required.


MALS 


**MISSED APPROACH:** Climb to 600 then climbing left turn to 2000 direct BRV VORTAC and hold.

AWOS-3 <b>126.325</b>	POTOMAC APP CON <b>128.525 306.925</b>	GCO <b>135.075</b>	UNICOM <b>122.725 (CTAF) 0</b>
--------------------------	---	-----------------------	-----------------------------------

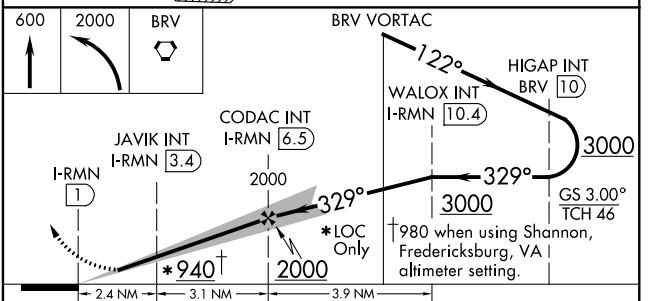
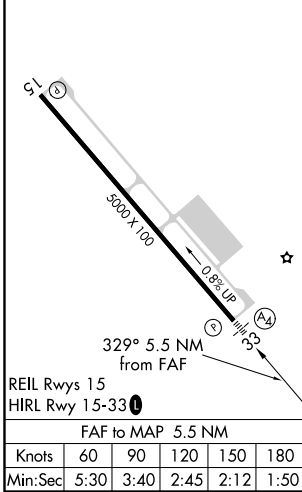


**ALTERNATE MISSED APCH FIX**

SHANNON  
EZF   
237



ELEV 212	TDZE 196
----------	----------



CATEGORY	A	B	C	D
S-ILS 33		396- <sup>3</sup> / <sub>4</sub>	200 (200- <sup>3</sup> / <sub>4</sub> )	
S-LOC 33		580- <sup>3</sup> / <sub>4</sub>	384 (400- <sup>3</sup> / <sub>4</sub> )	580-1 <sup>1</sup> / <sub>4</sub> 384 (400-1 <sup>1</sup> / <sub>4</sub> )
CIRCLING	720-1 508 (600-1)	740-1 528 (600-1)	840-1 <sup>3</sup> / <sub>4</sub> 628 (700-1 <sup>3</sup> / <sub>4</sub> )	860-2 648 (700-2)

NE-3: 01 FEB 2018 to 01 MAR 2018

NE-3: 01 FEB 2018 to 01 MAR 2018

WAAS CH <b>81805</b> <b>W33A</b>	APP CRS <b>329°</b>	Rwy Idg TDZE Apt Elev	<b>5000</b> <b>196</b> <b>212</b>
--	------------------------	-----------------------------	---

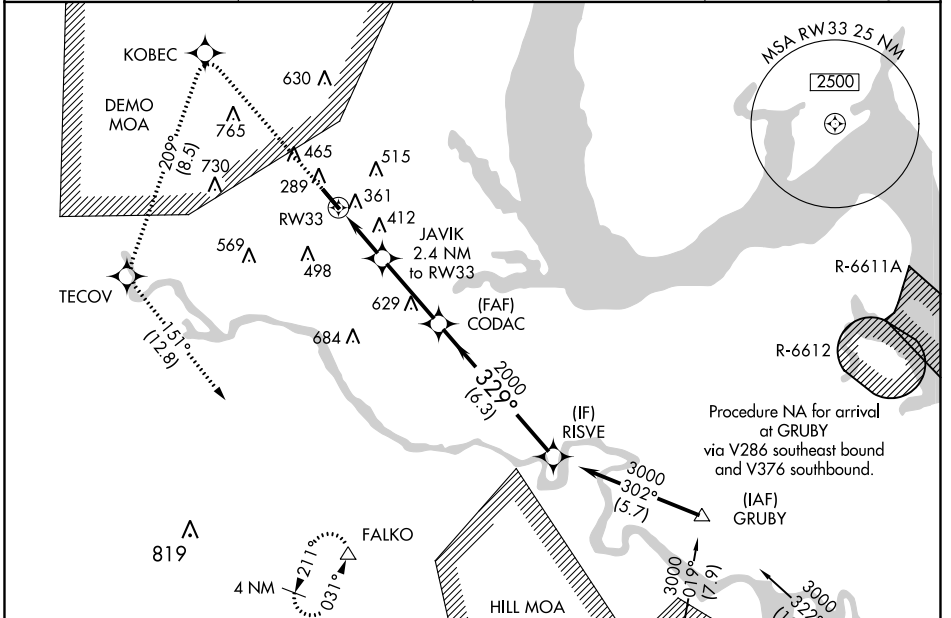
# RNAV (GPS) RWY 33

STAFFORD RGNL (RMN)

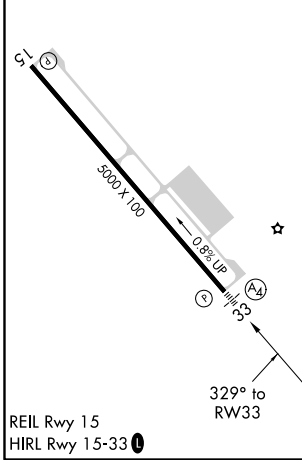
**NA** If local altimeter setting not received, use Shannon, Fredericksburg, VA altimeter setting and increase all DAs/MDAs 40 feet. Baro/VNAV NA below -15°C (5°F). VDP and Baro-VNAV NA when using Shannon, Fredericksburg, VA altimeter setting. Inoperative table does not apply to LNAV Cat C. DME/DME RNP-0.3 NA.

**MALS** MISSED APPROACH: Climb to 4000 direct KOBEC and left turn via 209° track to TECOV and left turn via 151° track to FALCO and hold.

AWOS-3 <b>126.325</b>	POTOMAC APP CON <b>128.525 306.925</b>	GCO <b>135.075</b>	UNICOM <b>122.725 (CTAF)</b>
--------------------------	---	-----------------------	---------------------------------



ELEV 212	TDZE 196
----------	----------



	4000 KOBEC	TECOV	FALCO	RISVE
	↑	209° TRK	151° TRK	
		JAVIK 2.4 NM to RW33	CODAC	3000
		* 1.5 NM to RW33		Procedure Turn NA
		* 980	2000	GP 3.00° TCH 46
		* LNAV only.		
	1.5 NM	0.9	3.1 NM	6.3 NM
CATEGORY	A	B	C	D
LPV DA		450-¾ 254 (300-¾)		450-1 254 (300-1)
LNAV/ VNAV DA		460-¾ 264 (300-¾)		460-1 264 (300-1)
LNAV MDA	700-¾	504 (500-¾)	700-1½	504 (500-1½)
CIRCLING	720-1 508 (600-1)	740-1 528 (600-1)	840-1¾ 628 (700-1¾)	880-2 668 (700-2)

NE-3, 01 FEB 2018 to 01 MAR 2018

NE-3, 01 FEB 2018 to 01 MAR 2018

VORTAC BRV <b>114.5</b> Chan <b>92</b>	APP CRS <b>314°</b>	Rwy Idg TDZE Apt Elev	<b>5000</b> <b>196</b> <b>212</b>
--	------------------------	-----------------------------	---

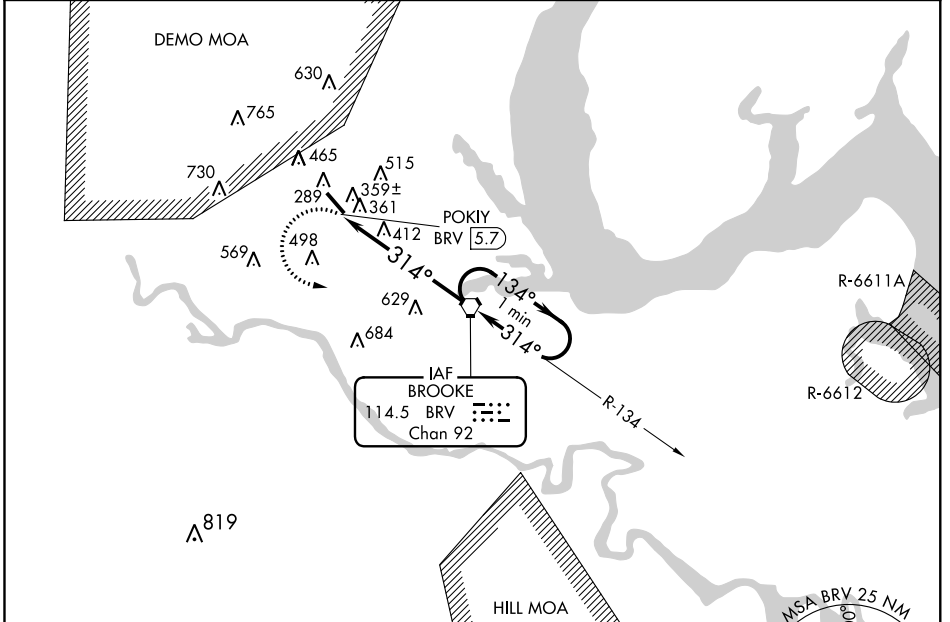
# VOR RWY 33

STAFFORD RGNL (RMN)

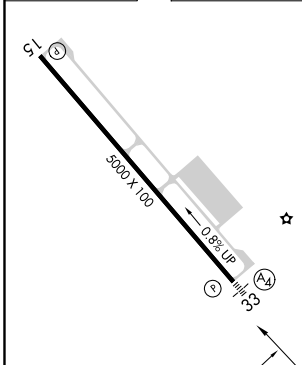
**▽** If local altimeter setting not received, use Shannon, Fredericksburg, VA altimeter setting and increase all MDAs 40 feet. VDP NA with Shannon, Fredericksburg, VA altimeter setting. Inoperative table does not apply to Cat C.

MALS  $\text{A}_4 \equiv \equiv$  MISSED APPROACH: Climbing left turn to 2000 direct BRV VORTAC and hold.

AWOS-3 <b>126.325</b>	POTOMAC APP CON <b>128.525 306.925</b>	GCO <b>135.075</b>	UNICOM <b>122.725 (CTAF) 0</b>
--------------------------	---	-----------------------	-----------------------------------



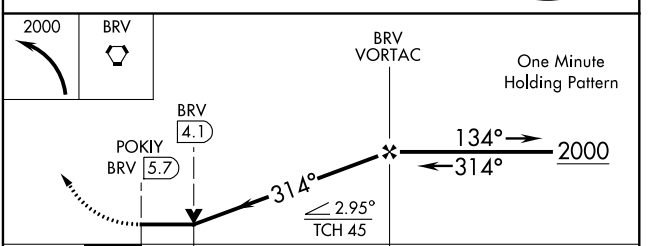
ELEV 212	TDZE 196
----------	----------



REIL Rwys 15  
HIRL Rwy 15-33

FAF to MAP 5.7 NM

Knots	60	90	120	150	180
Min:Sec	5:42	3:48	2:51	2:17	1:54



CATEGORY	A	B	C	D
S-33	740- $\frac{3}{4}$ 544 (600- $\frac{3}{4}$ )		740-1 $\frac{1}{2}$ 544 (600-1 $\frac{1}{2}$ )	740-1 $\frac{3}{4}$ 544 (600-1 $\frac{3}{4}$ )
CIRCLING	740-1 528 (600-1)		840-1 $\frac{3}{4}$ 628 (700-1 $\frac{3}{4}$ )	860-2 648 (700-2)

NE-3, 01 FEB 2018 to 01 MAR 2018

NE-3, 01 FEB 2018 to 01 MAR 2018