

SOCAL APP CON
134.0 278.3
ATIS
134.75 239.05

(ARKOE:ARKOE1) 20310
ARKOE ONE ARRIVAL

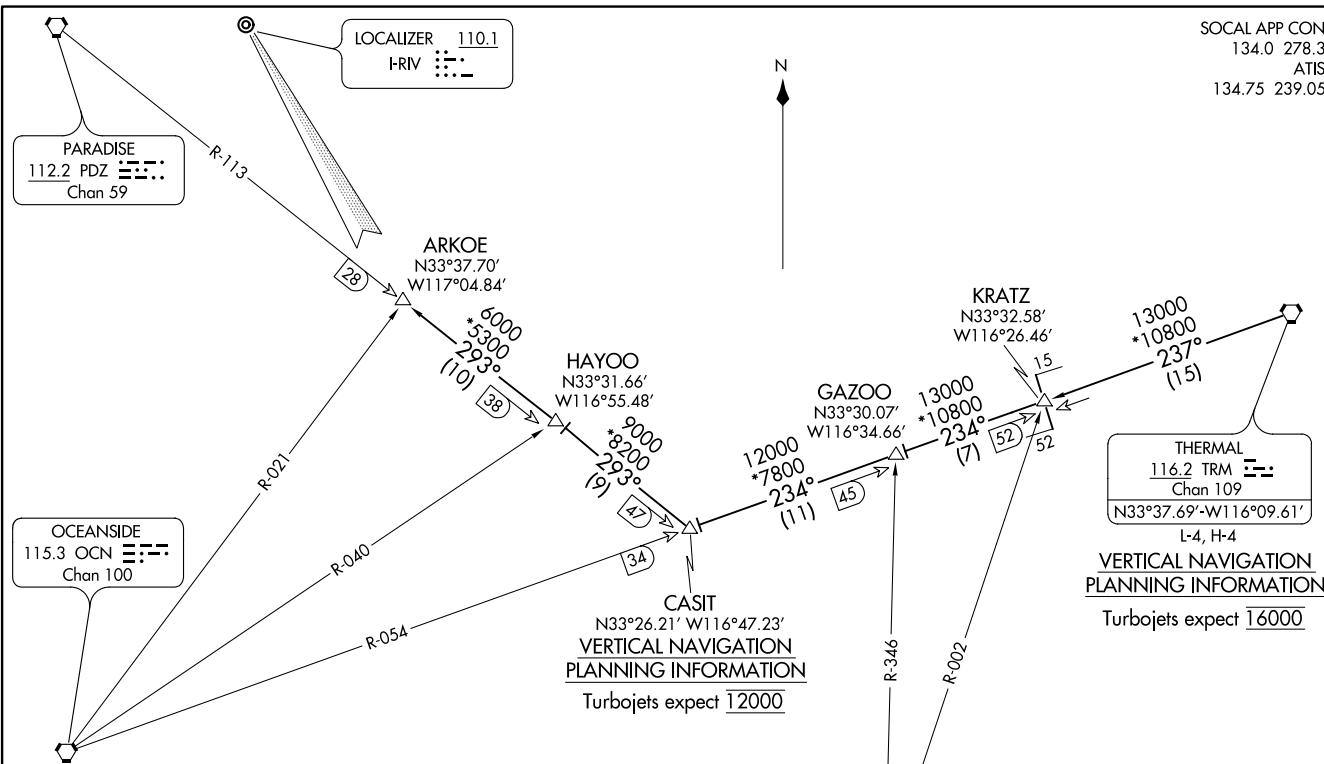
AL-348 (FAA)

MARCH ARR (KRITV)
RIVERSIDE, CALIFORNIA



ARKOE ONE ARRIVAL
(ARKOE:ARKOE1) 05APR12

RIVERSIDE, CALIFORNIA
MARCH ARR (KRITV)



THERMAL
116.2 TRM
Chan 109
N33°37.69' W116°09.61'
L-4, H-4

**VERTICAL NAVIGATION
PLANNING INFORMATION**
Turbojets expect 16000

CASIT
N33°26.21' W116°47.23'
**VERTICAL NAVIGATION
PLANNING INFORMATION**
Turbojets expect 12000

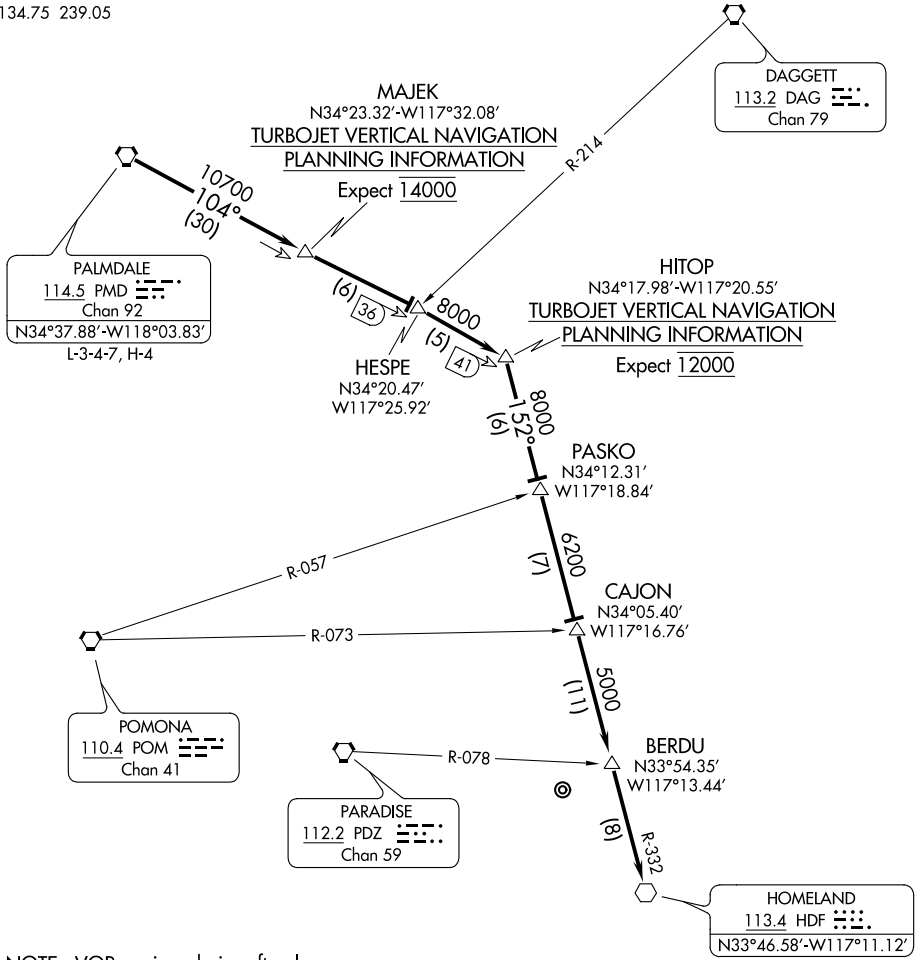
ARRIVAL ROUTE DESCRIPTION

THERMAL TRANSITION (TRM.ARKOE1): From over TRM VORTAC on TRM R-237 to KRATZ INT, then on OCN R-054 and PDZ R-113 to ARKOE INT.

From over ARKOE INT expect to intercept the localizer for an ILS Y or LOC RWY 32 or vector VOR/TACAN RWY 32.

NOTE: DME required.
NOTE: Chart not to scale.

MARCH APP CON★
133.5 324.1
ATIS
134.75 239.05



SW-3, 05 NOV 2020 to 03 DEC 2020

SW-3, 05 NOV 2020 to 03 DEC 2020

NOTE: VOR equipped aircraft only.

NOTE: Chart not to scale.

ARRIVAL ROUTE DESCRIPTION

From over PMD VORTAC via PMD R-104 to HITOP INT. Thence via HDF R-332 to HDF VOR. Expect VOR approach or vector to intercept ILS Rwy 32.