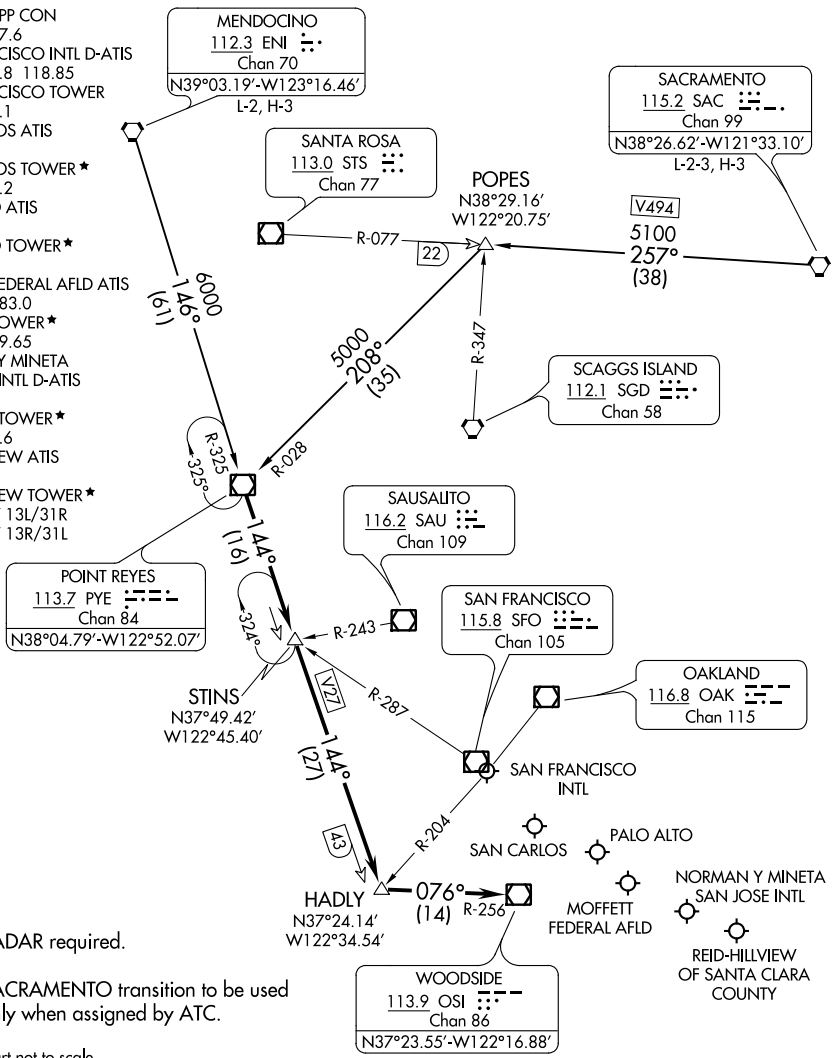


# POINT REYES THREE ARRIVAL

AL-375 (FAA)

SAN FRANCISCO, CALIFORNIA

NORCAL APP CON  
133.95 317.6  
SAN FRANCISCO INTL D-ATIS  
113.7 115.8 118.85  
SAN FRANCISCO TOWER  
120.5 269.1  
SAN CARLOS ATIS  
125.9  
SAN CARLOS TOWER\*  
119.0 326.2  
PALO ALTO ATIS  
135.275  
PALO ALTO TOWER\*  
118.6  
MOFFETT FEDERAL AFLD ATIS  
124.175 283.0  
MOFFETT TOWER\*  
119.55 259.65  
NORMAN Y MINETA  
SAN JOSE INTL D-ATIS  
126.95  
SAN JOSE TOWER\*  
124.0 257.6  
REID-HILLVIEW ATIS  
125.2  
REID-HILLVIEW TOWER\*  
119.8 RWY 13L/31R  
126.1 RWY 13R/31L



NOTE: RADAR required.

NOTE: SACRAMENTO transition to be used only when assigned by ATC.

NOTE: Chart not to scale.

## ARRIVAL ROUTE DESCRIPTION

MENDOCINO TRANSITION (ENI.PYE3): From over ENI VORTAC on ENI R-146 and PYE R-325 to PYE VOR/DME. Thence. . . .

SACRAMENTO TRANSITION (SAC.PYE3): From over SAC VORTAC on SAC R-257 and PYE R-028 to PYE VOR/DME. Thence. . . .

. . . .From over PYE VOR/DME on PYE R-144 to HADLY, then on OSI R-256 to OSI VOR/DME. Expect RADAR vectors to final approach course.

# POINT REYES THREE ARRIVAL

SAN FRANCISCO, CALIFORNIA

SW-2, 30 JAN 2020 to 27 FEB 2020

SW-2, 30 JAN 2020 to 27 FEB 2020