

| | | |
|--|------------------------|---|
| WAAS CH 99500 W12A | APP CRS 120° | Rwy Idg 3482 TDZE 5 Apt Elev 5 |
|--|------------------------|---|

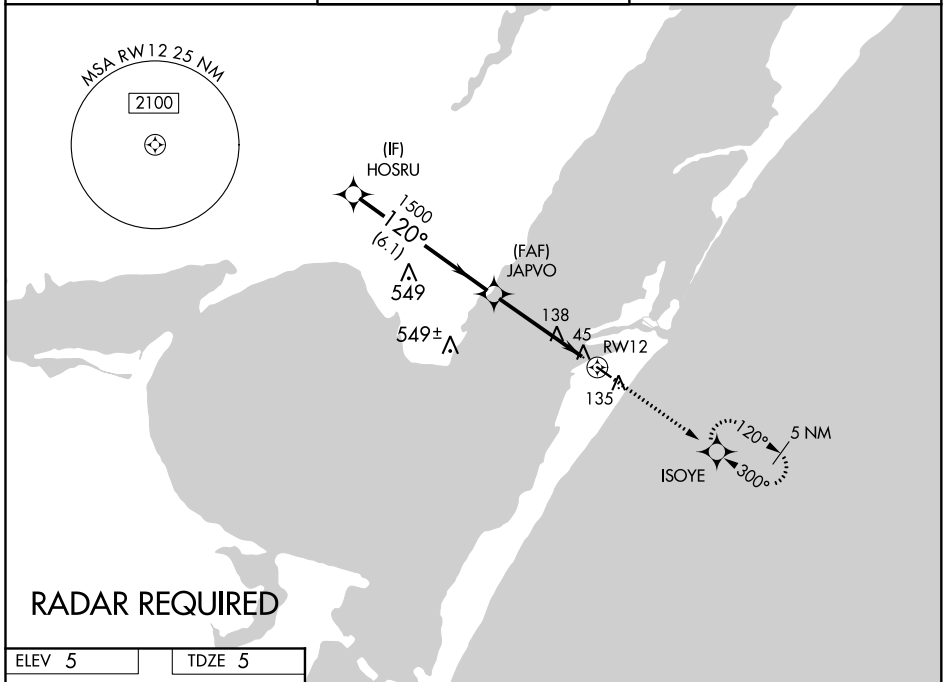
RNAV (GPS) RWY 12

MUSTANG BEACH (R.A.S)

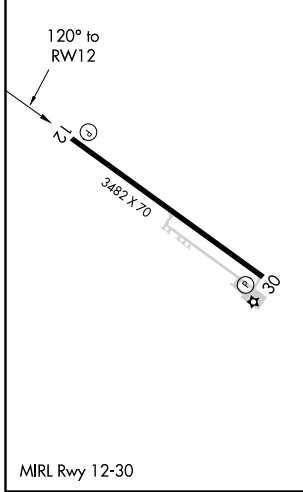
⚠ DME/DME RNP-0.3 NA. For uncompensated Baro-VNAV systems, LNAV/VNAV NA below -15°C (5°F) or above 44°C (111°F). If local altimeter setting not received, use Corpus Christi Intl altimeter setting and increase all DAs/MDAs 60 feet. Baro-VNAV and VDP NA when using Corpus Christi Intl altimeter setting.

MISSED APPROACH: Climb to 2000 direct ISOYE and hold.

| | | |
|--------------------------|--|----------------------|
| AWOS-3 118.425 | CORPUS CHRISTI APP CON 125.4 307.9 | CTAF 122.9 |
|--------------------------|--|----------------------|



| | |
|--------|--------|
| ELEV 5 | TDZE 5 |
|--------|--------|



| | | | | |
|--------------------|--------------------|--------------|-------------|-------|
| HOSRU | 3000 | JAPVO | 2000 | ISOYE |
| | Procedure Turn NA | | ↑ | ✦ |
| GP 3.00° TCH 35 | 1500 | | * LNAV only | |
| | 6.1 NM | 3.4 NM | 1.1 NM | |
| | * 1.1 NM to RWY 12 | | RWY 12 | |
| CATEGORY | A | B | C | D |
| LPV DA | 276-1 | 271 (300-1) | | NA |
| LNAV/VNAV DA | 435-1½ | 430 (500-1½) | | NA |
| LNAV MDA | 400-1 | 395 (400-1) | | NA |
| CIRCLING | 500-1 | 495 (500-1) | | NA |

SC-3, 03 DEC 2020 to 31 DEC 2020

SC-3, 03 DEC 2020 to 31 DEC 2020

| | | |
|--|------------------------|---|
| WAAS CH 63000 W30A | APP CRS 300° | Rwy Idg 3482 TDZE 5 Apt Elev 5 |
|--|------------------------|---|

RNAV (GPS) RWY 30

MUSTANG BEACH (R.A.S)

⚠ DME/DME RNP-0.3 NA. For uncompensated Baro-VNAV systems, LNAV/VNAV NA below -1.5°C (5°F) or above 44°C (111°F). If local altimeter setting not received, use Corpus Christi Intl altimeter setting and increase all DAs/MDAs 60 feet. Baro-VNAV and VDP NA when using Corpus Christi Intl altimeter setting.

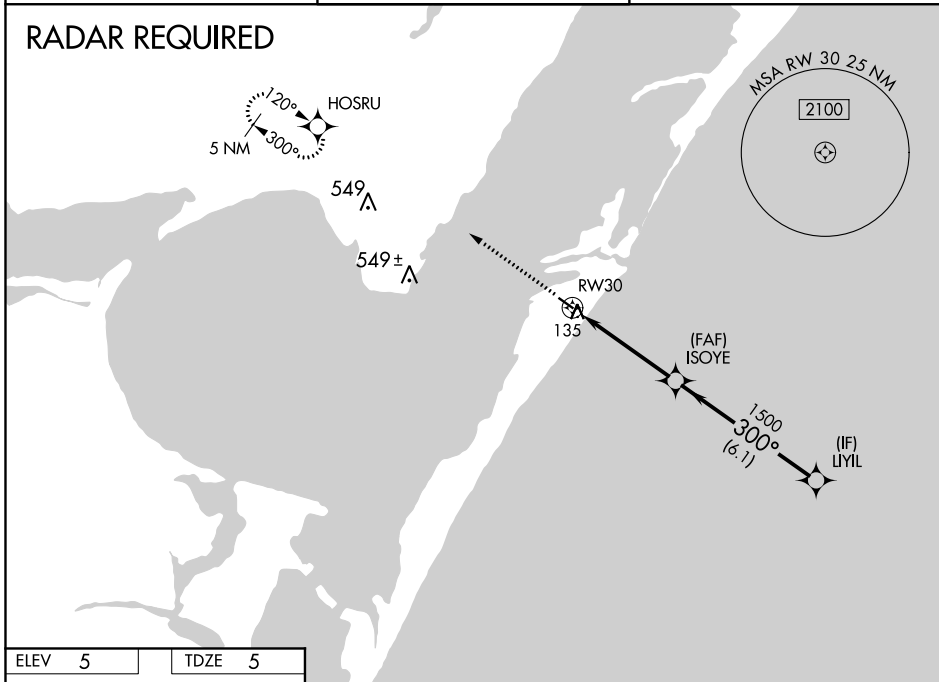
MISSED APPROACH: Climb to 2000 direct HOSRU and hold.

AWOS-3
118.425

CORPUS CHRISTI APP CON
125.4 307.9

CTAF
122.9

RADAR REQUIRED

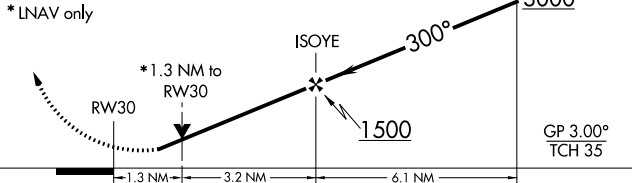
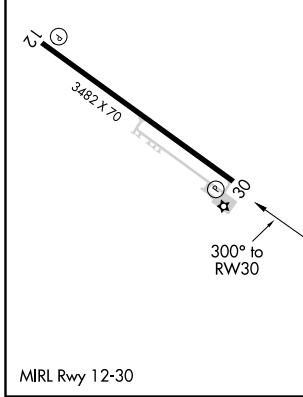


SC-3, 03 DEC 2020 to 31 DEC 2020

SC-3, 03 DEC 2020 to 31 DEC 2020

| | |
|--------|--------|
| ELEV 5 | TDZE 5 |
|--------|--------|

2000 HOSRU
 ↑ VGS1 and RNAV glidepath not coincident (VGS1 Angle 3.20/TCH 22).
 Procedure Turn NA



| CATEGORY | A | B | C | D |
|--------------|--------|--------------|---|----|
| LPV DA | 362-1¼ | 357 (400-1¼) | | NA |
| LNAV/VNAV DA | 435-1½ | 430 (500-1½) | | NA |
| LNAV MDA | 440-1 | 435 (500-1) | | NA |
| CIRCLING | 500-1 | 495 (500-1) | | NA |