

WAAS CH 99500 W12A	APP CRS 120°	Rwy Idg 3482 TDZE 5 Apt Elev 5
--	------------------------	---

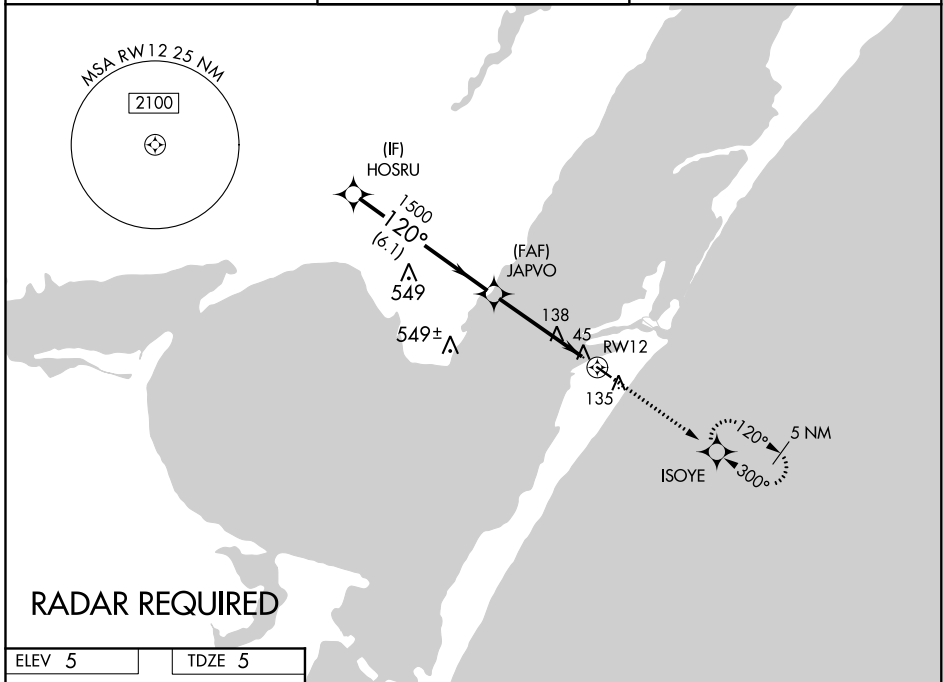
RNAV (GPS) RWY 12

MUSTANG BEACH (R.A.S)

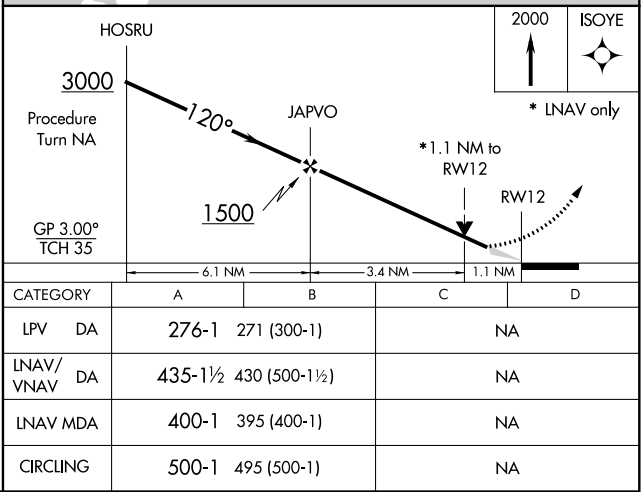
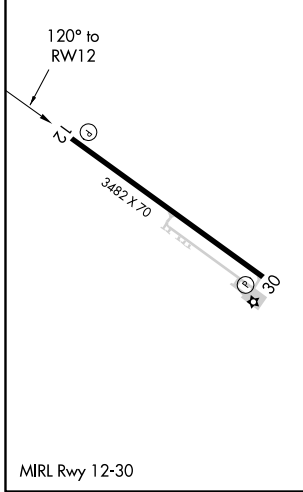
⚠ DME/DME RNP-0.3 NA. For uncompensated Baro-VNAV systems, LNAV/VNAV NA below -15°C (5°F) or above 44°C (111°F). If local altimeter setting not received, use Corpus Christi Intl altimeter setting and increase all DAs/MDAs 60 feet. Baro-VNAV and VDP NA when using Corpus Christi Intl altimeter setting.

MISSED APPROACH: Climb to 2000 direct ISOYE and hold.

AWOS-3 118.425	CORPUS CHRISTI APP CON 125.4 307.9	CTAF 122.9
--------------------------	--	----------------------



ELEV 5	TDZE 5
--------	--------



SC-3, 03 DEC 2020 to 31 DEC 2020

SC-3, 03 DEC 2020 to 31 DEC 2020

WAAS CH 63000 W30A	APP CRS 300°	Rwy Idg 3482 TDZE 5 Apt Elev 5
--	------------------------	---

RNAV (GPS) RWY 30

MUSTANG BEACH (R.A.S)

⚠ DME/DME RNP-0.3 NA. For uncompensated Baro-VNAV systems, LNAV/VNAV NA below -1.5°C (5°F) or above 44°C (111°F). If local altimeter setting not received, use Corpus Christi Intl altimeter setting and increase all DAs/MDAs 60 feet. Baro-VNAV and VDP NA when using Corpus Christi Intl altimeter setting.

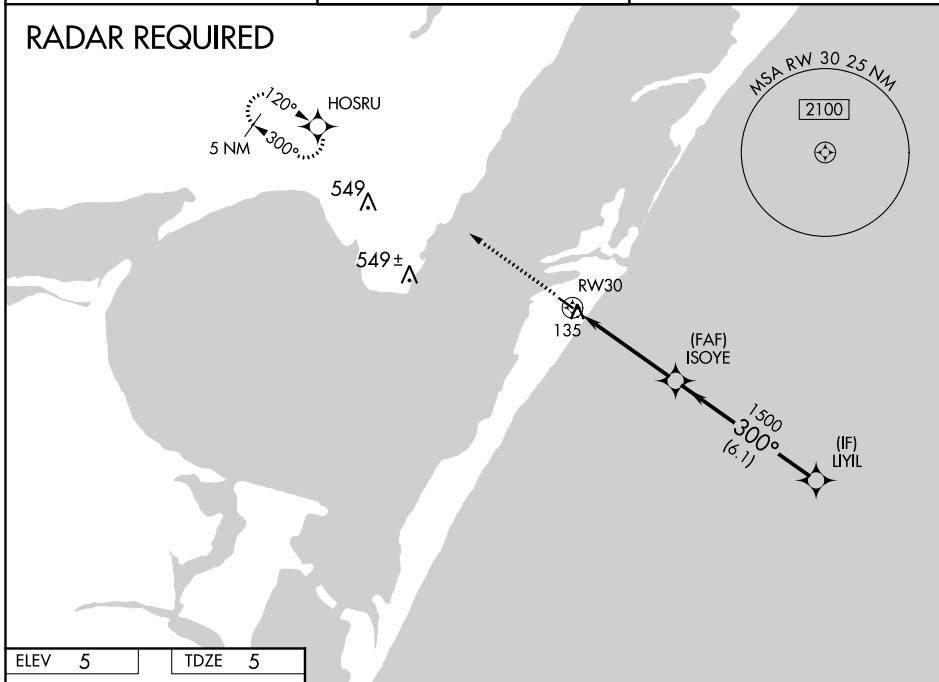
MISSED APPROACH: Climb to 2000 direct HOSRU and hold.

AWOS-3
118.425

CORPUS CHRISTI APP CON
125.4 307.9

CTAF
122.9

RADAR REQUIRED

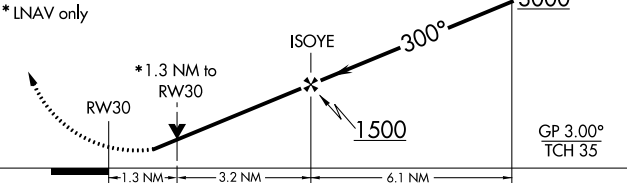
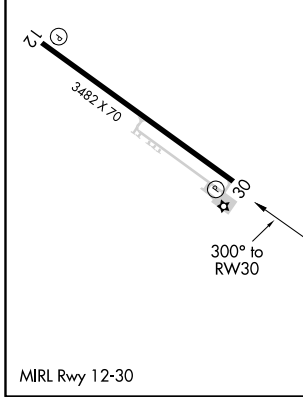


SC-3, 03 DEC 2020 to 31 DEC 2020

SC-3, 03 DEC 2020 to 31 DEC 2020

ELEV 5	TDZE 5
--------	--------

2000 HOSRU
 ↑ VGSi and RNAV glidepath not coincident (VGSi Angle 3.20/TCH 22).
 Procedure Turn NA



CATEGORY	A	B	C	D
LPV DA	362-1¼	357 (400-1¼)		NA
LNAV/VNAV DA	435-1½	430 (500-1½)		NA
LNAV MDA	440-1	435 (500-1)		NA
CIRCLING	500-1	495 (500-1)		NA

INSTRUMENT APPROACH PROCEDURE CHARTS

A IFR ALTERNATE AIRPORT MINIMUMS

Standard alternate minimums for non-precision approaches and approaches with vertical guidance [NDB, VOR, LOC, TACAN, LDA, SDF, VOR/DME, ASR, RNAV (GPS) or RNAV (RNP)] are 800-2. Standard alternate minimums for precision approaches (ILS, PAR, or GLS) are 600-2. Airports within this geographical area that require alternate minimums other than standard or alternate minimums with restrictions are listed below. NA - means alternate minimums are not authorized due to unmonitored facility, absence of weather reporting service, or lack of adequate navigation coverage. Civil pilots see FAR 91. IFR Alternate Minimums: Ceiling and Visibility Minimums not applicable to USA/USN/USAF. Pilots must review the IFR Alternate Minimums Notes for alternate airfield suitability.

NAME	ALTERNATE MINIMUMS
ALICE, TX	
ALICE INTL (ALI).....	LOC/DME Rwy 31¹
	RNAV (GPS) Rwy 13¹
	RNAV (GPS) Rwy 31¹
	VOR-A²

¹NA when local weather not available.
²Categories A, B, 900-2; Category C, 900-2½, Category D, 900-3.

ALPINE, TX	
ALPINE-CASPARIS	
MUNI (E38).....	RNAV (GPS) Rwy 19¹
	RNAV (GPS) Rwy 23²

¹Category B, 1000-2; Category C, 1300-3.
²Category A, 900-2; Category B, 1000-2; Category C, 1300-3.

AUSTIN, TX	
AUSTIN	
EXECUTIVE (EDC).....	RNAV (GPS) Rwy 13
	RNAV (GPS) Rwy 31
NA when local weather not available.	

AUSTIN-BERGSTROM	
INTL (AUS).....	ILS or LOC Rwy 17L¹
	ILS or LOC Rwy 17R¹
	ILS or LOC Rwy 35L²
	ILS or LOC Rwy 35R³
	RNAV (GPS) Y Rwy 17L⁴
	RNAV (GPS) Y Rwy 17R⁴
	RNAV (GPS) Y Rwy 35L⁴
	RNAV (GPS) Y Rwy 35R⁴

¹LOC, Category E, 1000-3.
²ILS, Categories C, D, 700-2; Category E, 1000-3;
 LOC, Category E, 1000-3.
³LOC, Category E, 1000-3.
⁴Category E, 1000-3.

NAME	ALTERNATE MINIMUMS
AUSTIN, TX (CON'T)	
SAN MARCOS	
REGIONAL (HYI).....	RNAV (GPS) Rwy 8
	RNAV (GPS) Rwy 13
	RNAV (GPS) Rwy 17
	RNAV (GPS) Rwy 26
	RNAV (GPS) Rwy 31
	RNAV (GPS) Rwy 35

NA when local weather not available.
 Category D, 800-2½; Category E, 800-2¾.

BEEVILLE, TX	
BEEVILLE MUNI (BEA).....	RNAV (GPS) Rwy 30
Category C, 800-2½.	

BIG LAKE, TX	
REAGAN COUNTY (E41).....	RNAV (GPS) Rwy 16
NA when local weather not available.	
Category C, 800-2½.	

BIGGS AAF (KBIF)	
FORT BLISS, TX.....	RNAV (GPS) Rwy 22
NA when R-5103 in use.	

BRADY, TX	
CURTIS FIELD (BBD).....	RNAV (GPS) Rwy 17
	RNAV (GPS) Rwy 35
NA when local weather not available.	

BROWNSVILLE, TX	
BROWNSVILLE/SOUTH PADRE ISLAND	
INTL (BRO).....	ILS or LOC Rwy 13¹
	LOC BC Rwy 31¹
	RNAV (GPS) Rwy 13
	RNAV (GPS) Rwy 18
	RNAV (GPS) Rwy 31
	VOR or TACAN-A

NA when local weather not available.
¹NA when control tower closed.

BURNET, TX	
BURNET MUNI KATE CRADDOCK	
FIELD (BMQ).....	RNAV (GPS) Rwy 1
	RNAV (GPS) Rwy 19
NA when local weather not available.	

03 DEC 2020 to 31 DEC 2020

03 DEC 2020 to 31 DEC 2020

NAME ALTERNATE MINIMUMS

CASTROVILLE, TX

CASTROVILLE
MUNI (CVB).....RNAV (GPS) Rwy 16
RNAV (GPS) Rwy 34

NA when local weather not available.
Category C, 900-2¼.

COLEMAN, TX

COLEMAN MUNI (COM).....RNAV (GPS) Rwy 15
RNAV (GPS) Rwy 33

NA when local weather not available.
Category C, 800-2¼.

COMANCHE, TX

COMANCHE
COUNTY-CITY (MKN).....RNAV (GPS) Rwy 17
RNAV (GPS) Rwy 35

NA when local weather not available.

CORPUS CHRISTI, TX

CORPUS CHRISTI
INTL (CRP).....ILS or LOC Rwy 13¹
ILS or LOC Rwy 36²⁴
LOC Rwy 31²
RNAV (GPS) Rwy 18³
RNAV (GPS) X Rwy 31³
RNAV (GPS) Y Rwy 13³
RNAV (GPS) Y Rwy 31³
RNAV (GPS) Y Rwy 36³
VOR or TACAN Rwy 18³⁴

¹ILS, LOC, Category C, 800-2¼;
Category D, 800-2½; Category E, 800-2¾.
²LOC, Category C, 800-2¼; Category D, 800-2½;
Category E, 800-2¾.
³Category C, 800-2¼; Category D, 800-2½;
Category E, 800-2¾.
⁴NA when local weather not available.

COTULLA, TX

COTULLA-LA SALLE
COUNTY (COT).....VOR-A
NA when local weather not available.

DEL RIO, TX

DEL RIO INTL (DRT).....RNAV (GPS) Rwy 13
VOR-A¹²

NA when local weather not available.
¹NA when Del Rio APP CON closed.
²Category C, 800-2¼. Category D, 800-2½.

NAME ALTERNATE MINIMUMS

EL PASO, TX

EL PASO INTL (ELP).....ILS or LOC Rwy 22¹
LOC/DME Rwy 4²
RADAR-1³
RNAV (GPS) Rwy 26R²
RNAV (GPS) X Rwy 4²
RNAV (GPS) Y Rwy 22²
RNAV (GPS) Y Rwy 26L²
VOR Rwy 26L³

¹LOC, Category D, 800-2¼; Category E, 800-2½.
²Category D, 800-2¼.
³Category D, 800-2¼; Category E, 800-2½.

FALFURRIAS, TX

BROOKS
COUNTY (BKS).....RNAV (GPS) Rwy 17
RNAV (GPS) Rwy 35
Category C, 900-2½; Category D, 900-2½.

FORT HOOD/KILLEEN, TX

ROBERT GRAY
AAF (GRK).....ILS or LOC Rwy 15¹
ILS or LOC Rwy 33¹
RNAV (GPS) Rwy 15²
RNAV (GPS) Rwy 33²

¹LOC, Category E, 800-2½.
²Category E, 800-2½.

FORT STOCKTON, TX

FORT STOCKTON-PECOS
COUNTY (FST).....RNAV (GPS) Rwy 12¹
RNAV (GPS) Rwy 30¹
VOR Rwy 12

Category D, 800-2½.
¹NA when local weather not available.

FREDERICKSBURG, TX

GILLESPIE
COUNTY (T82).....RNAV (GPS) Rwy 14
RNAV (GPS) Rwy 32
VOR/DME-A¹

Category C, 800-2¼.
¹NA when local weather not available.

GEORGETOWN, TX

GEORGETOWN
MUNI (GTU).....RNAV (GPS) Rwy 11¹
RNAV (GPS) Rwy 18
RNAV (GPS) Rwy 29¹
RNAV (GPS) Rwy 36

Category D, 900-2¾.
¹NA when local weather not available.

03 DEC 2020 to 31 DEC 2020

03 DEC 2020 to 31 DEC 2020

NAME ALTERNATE MINIMUMS

NAME ALTERNATE

HARLINGEN, TX

LAREDO, TX

VALLEY INTL (HRL).....**ILS or LOC Rwy 17R¹²**
LOC/DME BC Rwy 35L¹
RNAV (GPS) Rwy 17L²
RNAV (GPS) Rwy 35R²
RNAV (GPS) Y Rwy 13¹²
RNAV (GPS) Y Rwy 17R¹²
RNAV (GPS) Y Rwy 35L¹²
VOR/DME Rwy 17L³
VOR/DME Y or TACAN Rwy 31²⁴

INTL (LRD).....**ILS or LOC Rwy 18R¹²**
LOC BC Rwy 36L¹²
RNAV (GPS) Rwy 14³
RNAV (GPS) Rwy 18L³
RNAV (GPS) Rwy 18R³
RNAV (GPS) Rwy 32³
RNAV (GPS) Rwy 36L³
VOR or TACAN Rwy 14³
VOR or TACAN Rwy 32³

¹NA when control tower closed.
²NA when local weather not available.
³Categories A, B, 900-2;
Categories C, D, 900-2½.
⁴Categories A, B, 1000-2;
Categories C, D, 1000-3.

¹NA when control tower closed.
²LOC, Category D, 800-2¼; Category E, 800-2½.
³Category D, 800-2¼; Category E, 800-2½.

HEBRONVILLE, TX

LLANO, TX

JIM HOGG
COUNTY (HBV).....**RNAV (GPS) Rwy 13**
NA when local weather not available.

LLANO MUNI (AQO).....**RNAV (GPS) Rwy 17**
RNAV (GPS) Rwy 35
VOR-A

NA when local weather not available.

HONDO, TX

MC ALLEN, TX

SOUTH TEXAS RGNL
AT HONDO (HDO).....**NDB Rwy 35R**
RNAV (GPS) Rwy 17L
RNAV (GPS) Rwy 35R
NA when local weather not available.

MC ALLEN MILLER
INTL (MFE).....**ILS or LOC Rwy 14¹**
ILS or LOC Rwy 32¹
RNAV (GPS) Rwy 14²
RNAV (GPS) Rwy 32²
VOR Rwy 14²
VOR Rwy 32²

NA when local weather not available.
¹ILS, Category D, 700-2¼; LOC, Category D, 800-2¼.
²Category D, 800-2¼.

INGLESIDE, TX

MIDLAND, TX

MC CAMPBELL-
PORTER (TFP).....**RNAV (GPS) Rwy 13**
RNAV (GPS) Rwy 31
NA when local weather not available.

MIDLAND
AIRPARK (MDD).....**RNAV (GPS) Rwy 25¹**
RNAV (GPS) Rwy 34

NA when local weather not available.
¹Category D, 900-3.

KERRVILLE, TX

KERRVILLE MUNI/LOUIS SCHREINER
FIELD (ERV).....**RNAV (GPS) Rwy 12¹**
RNAV (GPS) Rwy 30³
VOR-A³
NA when local weather not available.
¹Category C, 800-2¼; Category D, 1000-3.
²Category C, 800-2¼.
³Categories A, B, 900-2, Category C, 900-2½.

MIDLAND INTL AIR AND SPACE
PORT (MAF).....**ILS or LOC Rwy 10¹²**
RADAR-1³
VOR or TACAN Rwy 34L³
VOR or TACAN Rwy 16R³

¹ILS, Category D, 700-2; Category E, 800-2½;
LOC, Category E, 800-2½.
²NA when control tower closed.
³Category E, 800-2½.

LAMPASAS, TX

LAMPASAS (LZZ).....**VOR-A**
NA when local weather not available.

NEW BRAUNFELS, TX

NEW BRAUNFELS
RGNL (BAZ).....**RNAV (GPS) Rwy 13**
RNAV (GPS) Rwy 17
RNAV (GPS) Rwy 31
RNAV (GPS) Rwy 35
NA when local weather not available.

03 DEC 2020 to 31 DEC 2020

03 DEC 2020 to 31 DEC 2020

NAME ALTERNATE MINIMUMS

ODESSA, TX

ODESSA-SCHLEMEYER
FIELD (ODO)..... RNAV (GPS) Rwy 11
RNAV (GPS) Rwy 20
RNAV (GPS) Rwy 29
VOR-A

NA when local weather not available.

PECOS, TX

PECOS MUNI (PEQ)..... RNAV (GPS) Rwy 14
RNAV (GPS) Rwy 32

NA when local weather not available.

PLEASANTON, TX

PLEASANTON
MUNI (PEZ)..... RNAV (GPS) Rwy 34

NA when local weather not available.

PORT ARANSAS, TX

MUSTANG
BEACH (RAS)..... RNAV (GPS) Rwy 12
RNAV (GPS) Rwy 30

NA when local weather not available.

PORT ISABEL, TX

PORT ISABEL-CAMERON
COUNTY (PIL)..... RNAV (GPS) Rwy 13

NA when local weather not available.

ROBSTOWN, TX

NUECES
COUNTY (RBO)..... RNAV (GPS) Rwy 13
RNAV (GPS) Rwy 31

NA when local weather not available.

ROCKPORT, TX

ARANSAS
COUNTY (RKP)..... RNAV (GPS) Rwy 14
RNAV (GPS) Rwy 18
RNAV (GPS) Rwy 32
RNAV (GPS) Rwy 36
VOR or TACAN-A¹

NA when local weather not available.

¹Category C, 800-2¼.

ROCKSPRINGS, TX

EDWARDS
COUNTY (ECU)..... VOR Rwy 14

NA when local weather not available.

NAME ALTERNATE

SAN ANGELO, TX

SAN ANGELO RGNL/
MATHIS FIELD (SJT)..... ILS Y or LOC Y Rwy 3¹²
NDB Rwy 3³⁴
RADAR-1³⁵
RNAV (GPS) Rwy 3⁵
RNAV (GPS) Rwy 18⁵
RNAV (GPS) Rwy 21⁵
VOR Rwy 21⁴
VOR/DME or TACAN Rwy 3⁵

¹LOC, Category D, 800-2¼, Category E, 800-2¼.
²LOC, NA when control tower closed.
³NA when control tower closed.
⁴Category D, 800-2¼.
⁵Category D, 800-2¼, Category E, 800-2¼.

SAN ANTONIO, TX

BOERNE STAGE
FIELD (5C1)..... RNAV (GPS) Rwy 17
RNAV (GPS) Rwy 35

NA when local weather not available.

SAN ANTONIO

INTL (SAT)..... ILS or LOC Rwy 13R¹
RNAV (GPS) Y Rwy 13R²

¹ILS, 700-2.
²Categories A, B, 900-2; Category C, 900-2¼; Category D, 900-2¼.

TAYLOR, TX

TAYLOR
MUNI (T74)..... RNAV (GPS) Rwy 17
VOR Rwy 17

NA when local weather not available.

TEMPLE, TX

DRAUGHON-MILLER CENTRAL
TEXAS RGNL (TPL)..... RNAV (GPS) Rwy 15
RNAV (GPS) Rwy 33

Category D, 800-2¼.

UVALDE, TX

GARNER FIELD (UVA)..... RNAV (GPS) Rwy 33
NA when local weather not available.

WACO, TX

TSTC WACO (CNW)..... NDB Rwy 35R¹²
RNAV (GPS) Rwy 17L
RNAV (GPS) Rwy 35R

NA when local weather not available.
¹NA when Waco Rgnl approach control closed.
²Category D, 800-2¼.

MC GREGOR

EXECUTIVE (PWG)..... RNAV (GPS) Rwy 17
RNAV (GPS) Rwy 35

NA when local weather not available.

03 DEC 2020 to 31 DEC 2020

03 DEC 2020 to 31 DEC 2020

20310

NAME ALTERNATE MINIMUMS NAME ALTERNATE

WACO, TX (CON'T)

WACO RGNL (ACT).....ILS or LOC Rwy 19¹
RNAV (GPS) Rwy 1
RNAV (GPS) Rwy 14
RNAV (GPS) Rwy 19
RNAV (GPS) Rwy 32
VOR/DME Rwy 32

NA when local weather not available.

¹NA when control tower closed.

WESLACO, TX

MID
VALLEY (TXW).....RNAV (GPS) Rwy 14
NA when local weather not available.
Category D, 900-2 $\frac{3}{4}$.

WINK, TX

WINKLER
COUNTY (INK).....RNAV (GPS) Rwy 13¹
RNAV (GPS) Rwy 31¹
VOR Rwy 13

NA when local weather not available.

¹Category C, 800-2 $\frac{1}{4}$.

03 DEC 2020 to 31 DEC 2020

03 DEC 2020 to 31 DEC 2020

20310