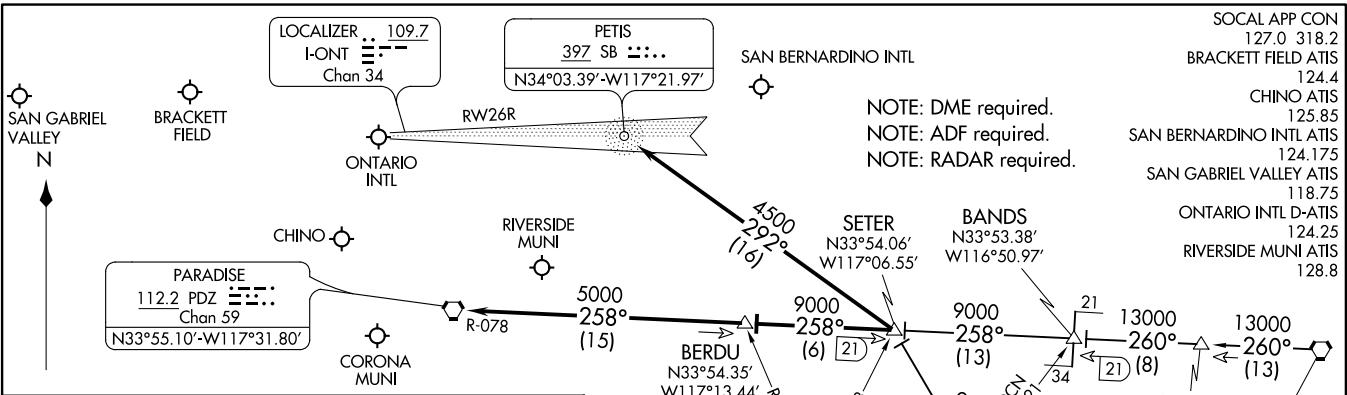


SETER FIVE ARRIVAL  
(SETER:SETER5) 17AUG17

SETER FIVE ARRIVAL  
(SETER:SETER5) 20310



**ARRIVAL ROUTE DESCRIPTION**

**JULIAN TRANSITION (JLI:SETER5):** From over JLI VORTAC on JLI R-315 to SETER. Thence. . . .

**PALM SPRINGS TRANSITION (PSP:SETER5):** From over PSP VORTAC on PSP R-260 to BANDS, then on PDZ R-078 to SETER. Thence. . . .

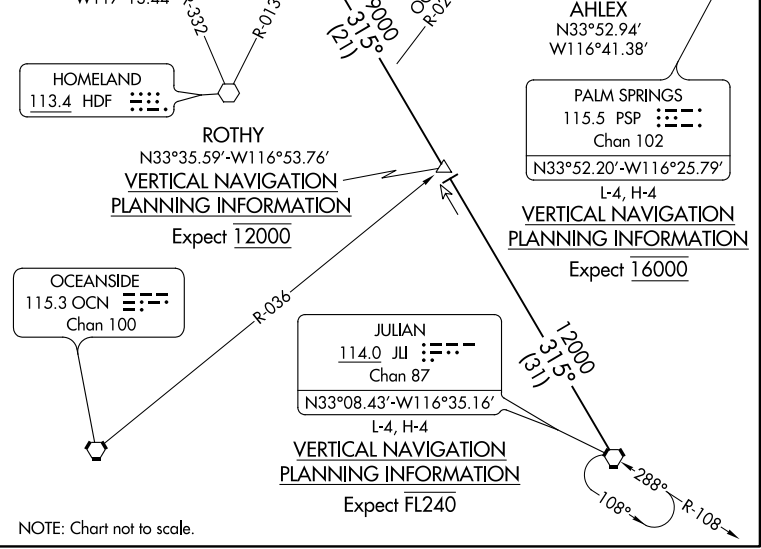
**LANDING ONTARIO INTL**

**RUNWAYS 26L/R:** From over SETER on SB NDB 292° course to SB NDB; expect ILS approach.

**RUNWAYS 8L/R:** From over SETER on PDZ R-078 to BERDU, then on PDZ R-078 to PDZ VORTAC; expect vectors to final approach course.

**ALL OTHER AIRPORTS**

From over SETER via PDZ R-078 to BERDU, then on PDZ R-078 to PDZ VORTAC; expect vectors to final approach course.



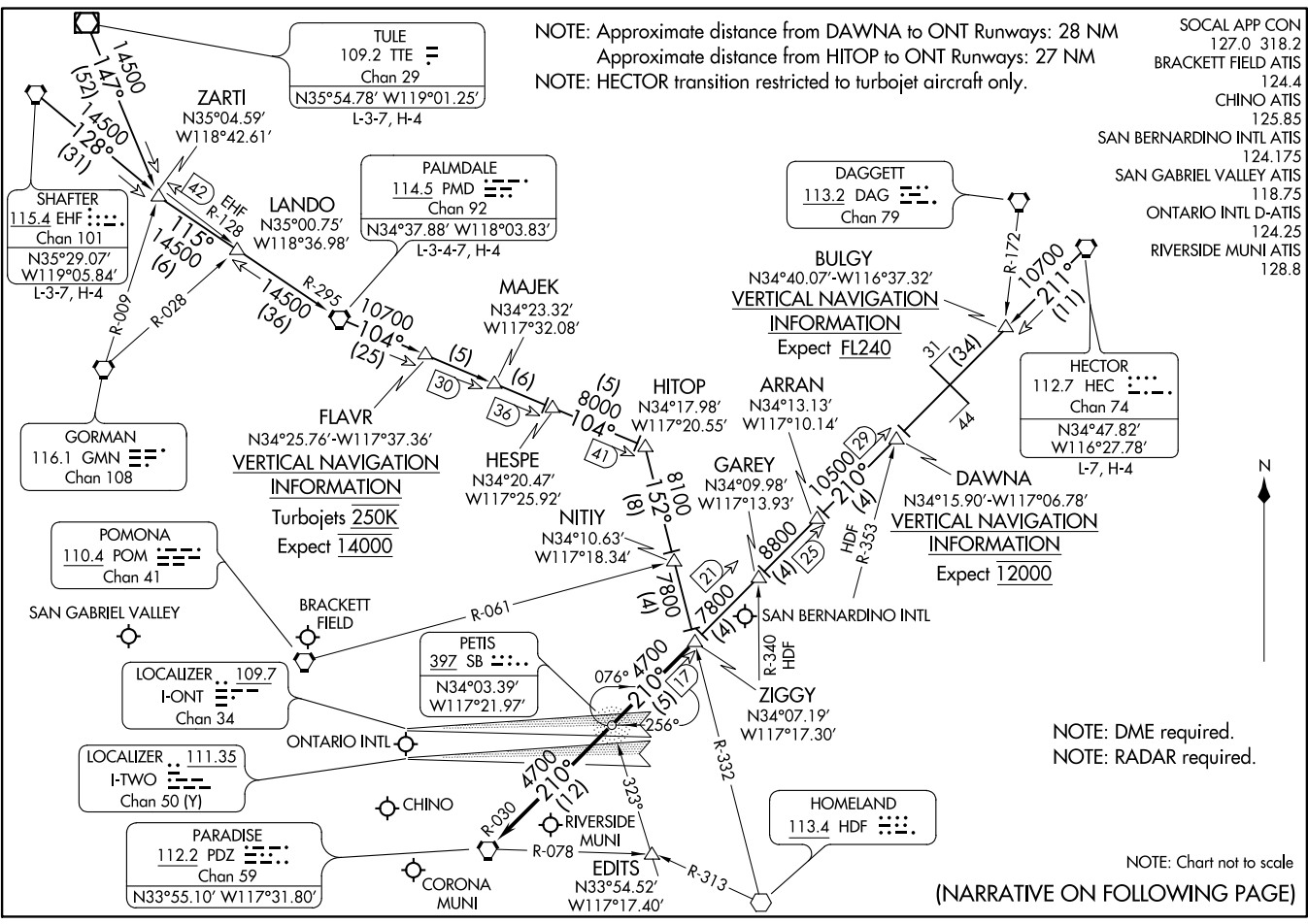
AL-965 (FAA)

ONTARIO, CALIFORNIA

ONTARIO, CALIFORNIA

ZIGGY SEVEN ARRIVAL  
ZIGGY ZIGGY 01 FEB 18

ONTARIO, CALIFORNIA



- SOCAL APP CON 127.0 318.2
- BRACKETT FIELD ATIS 124.4
- CHINO ATIS 125.85
- SAN BERNARDINO INTL ATIS 124.175
- SAN GABRIEL VALLEY ATIS 118.75
- ONTARIO INTL D-ATIS 124.25
- RIVERSIDE MUNI ATIS 128.8

ZIGGY SEVEN ARRIVAL  
ZIGGY ZIGGY 20310

AL-965 (FAA)

ONTARIO, CALIFORNIA

ARRIVAL ROUTE DESCRIPTION

HECTOR TRANSITION (HEC.ZIGGY7): From over HEC VORTAC on HEC R-211 and PDZ R-030 to ZIGGY. Thence . . . .

PALMDALE TRANSITION (PMD.ZIGGY7): From over PMD VORTAC on PMD R-104 to HITOP, then on HDF R-332 to ZIGGY. Thence . . . .

SHAFTER TRANSITION (EHF.ZIGGY7): From over EHF VORTAC on EHF R-128 and PMD R-295 to PMD VORTAC, then on PMD R-104 to HITOP, then on HDF R-332 to ZIGGY. Thence . . . .

TULE TRANSITION (TTE.ZIGGY7): From over TTE VOR/DME on TTE R-147 and PMD R-295 to PMD VORTAC, then on PMD R-104 to HITOP, then on HDF R-332 to ZIGGY. Thence . . . .

LANDING ONTARIO INTL

RUNWAYS 8L/R: From over ZIGGY on PDZ R-030 to PDZ VORTAC; expect RADAR vectors to final approach course.

RUNWAYS 26 L/R: From over ZIGGY direct PETIS NDB or on PDZ R-030 to PETIS; expect RADAR vectors for ILS approach.

ALL OTHER AIRPORTS

From over ZIGGY on PDZ R-030 to PDZ VORTAC; expect RADAR vectors to final approach course.

SW-3, 31 DEC 2020 to 28 JAN 2021

SW-3, 31 DEC 2020 to 28 JAN 2021