


LOC I-PTK <b>111.1</b>	APP CRS <b>095°</b>	Rwy Idg TDZE Apt Elev	<b>6520</b> <b>981</b> <b>981</b>
---------------------------	------------------------	-----------------------------	---

# ILS or LOC RWY 9R

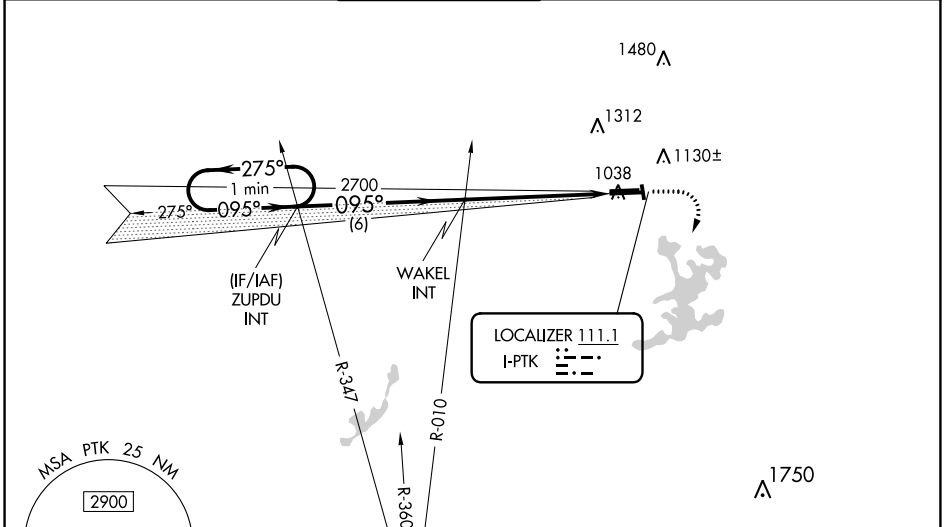
OAKLAND COUNTY INTL (PTK)

RADAR required for procedure entry.

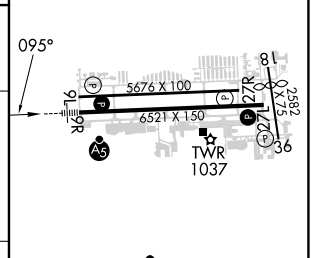
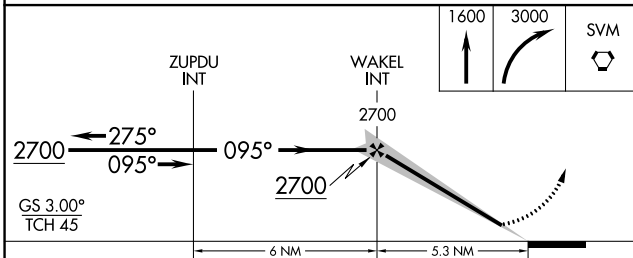
**▼** Circling Rwy 9L, 36 NA at night. When local altimeter setting not received, use Coleman A Young Muni altimeter setting and increase DA to 1286 feet and all MDA 120 feet, increase S-LOC 9R Cat B visibility to RVR 4000, Cat C/D visibility 3/8 SM, and Circling Cat B/C/D visibility 1/2 SM. For inop MALS, increase S-LOC 9R Cat C/D visibility to 1 1/8 SM. For inop MALS, when using Coleman A Young altimeter, increase S-ILS 9R all Cats visibility to RVR 4500, and increase S-LOC 9R Cat C/D visibility to 2 SM. \*\*RVR 1800 authorized with the use of FD or AP or HUD to DA, NA when using Coleman A Young Muni altimeter setting.

**MALS**  MISSED APPROACH: Climb to 1600 then climbing right turn to 3000 direct SVM VORTAC and hold.

ATIS <b>125.025</b>	DETROIT APP CON <b>132.35 284.0</b>	<b>PONTIAC TOWER *</b> <b>120.5 (CTAF) 1</b>	GND CON <b>121.9</b>	CLNC DEL <b>118.25</b>	UNICOM <b>122.95</b>
------------------------	--	---	-------------------------	---------------------------	-------------------------



ELEV 981	<b>D</b> TDZE 981
----------	-------------------



CATEGORY	A	B	C	D	
S-ILS 9R	** 1181/24		200 (200-1/2)		
S-LOC 9R	1620/24	639 (700-1/2)	1620-1 3/8	639 (700-1 3/8)	
<b>C</b> CIRCLING	1620-1	639 (700-1)	1640-1 3/4	1640-2	
			659 (700-1 3/4)	659 (700-2)	
HIRL Rwy 9R-27L 1					
MIRL Rwy 9L-27R					
REIL Rwy 27L 1					
REIL Rwy 9L and 27R					
FAF to MAP 5.3 NM					
Knots	60	90	120	150	180
Min:Sec	5:18	3:32	2:39	2:07	1:46

EC-1, 22 FEB 2024 to 21 MAR 2024

EC-1, 22 FEB 2024 to 21 MAR 2024

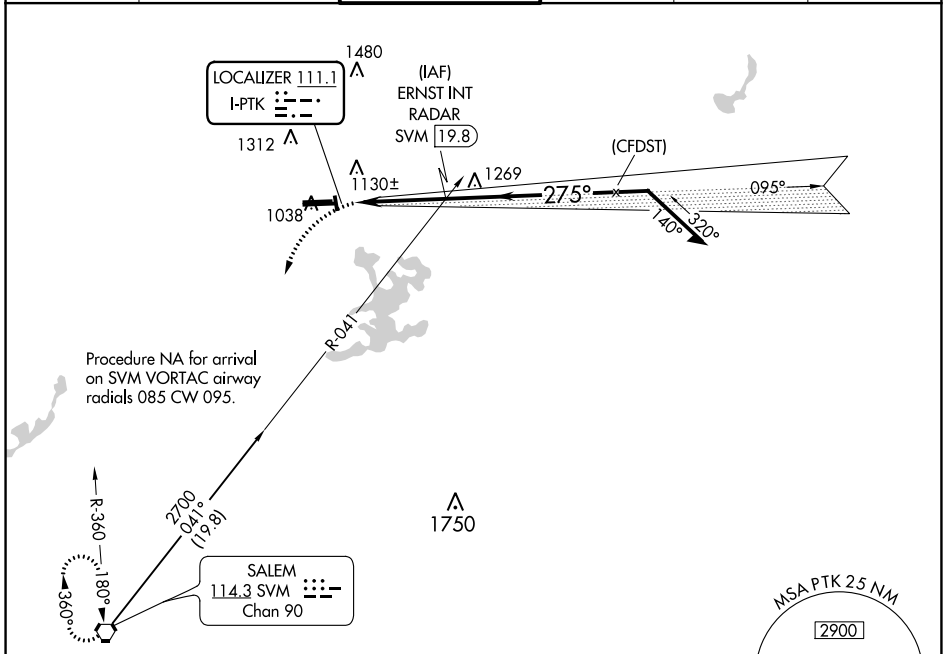
LOC I-PTK <b>111.1</b>	APP CRS <b>275°</b>	Rwy Idg <b>6520</b>
		TDZE <b>974</b>
		Apt Elev <b>981</b>

**LOC BC RWY 27L**  
OAKLAND COUNTY INTL (PTK)

**⚠** Circling Rwy 9L, 36 NA at night. When local altimeter setting not received, use Coleman A Young Muni altimeter setting and increase all MDA 120 feet, increase S-27L Cat C/D visibility  $\frac{3}{8}$  SM and Circling Cat C/D visibility  $\frac{1}{2}$  SM.

**MISSED APPROACH:**  
Climbing left turn to 3000 direct SVM VORTAC and hold.

ATIS <b>125.025</b>	DETROIT APP CON <b>132.35 284.0</b>	PONTIAC TOWER * <b>120.5 (CTAF) 0</b>	GND CON <b>121.9</b>	CLNC DEL <b>118.25</b>	UNICOM <b>122.95</b>
------------------------	--	--	-------------------------	---------------------------	-------------------------



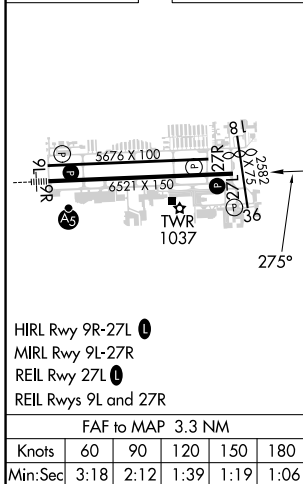
Procedure NA for arrival on SVM VORTAC airway radials 085 CW 095.

EC-1, 22 FEB 2024 to 21 MAR 2024

EC-1, 22 FEB 2024 to 21 MAR 2024

ELEV 981	<b>D</b>	TDZE 974
----------	----------	----------

**BACK COURSE**



HIRL Rwy 9R-27L **0**  
MIRL Rwy 9L-27R  
REIL Rwy 27L **0**  
REIL Rws 9L and 27R

FAF to MAP 3.3 NM

Knots	60	90	120	150	180
Min:Sec	3:18	2:12	1:39	1:19	1:06

3000	SVM	ERNST INT RADAR			
Remain within 10 NM		Disregard GS indications.			
I-PTK		TCH 42			
0.7		3.3 NM			
CATEGORY	A	B	C	D	
S-LOC 27L	1 440-1	466 (500-1)	1 440-1 $\frac{3}{8}$	466 (500-1 $\frac{3}{8}$ )	
<b>C</b> CIRCLING	1 500-1	1 540-1	1 640-1 $\frac{3}{4}$	1 640-2	
	519 (600-1)	559 (600-1)	659 (700-1 $\frac{3}{4}$ )	659 (700-2)	

WAAS CH <b>70615</b> <b>W27A</b>	APP CRS <b>275°</b>	Rwy Idg TDZE Apt Elev	<b>6520</b> <b>974</b> <b>981</b>
--	------------------------	-----------------------------	---

# RNAV (GPS) RWY 27L

OAKLAND COUNTY INTL (PTK)

RNP APCH.

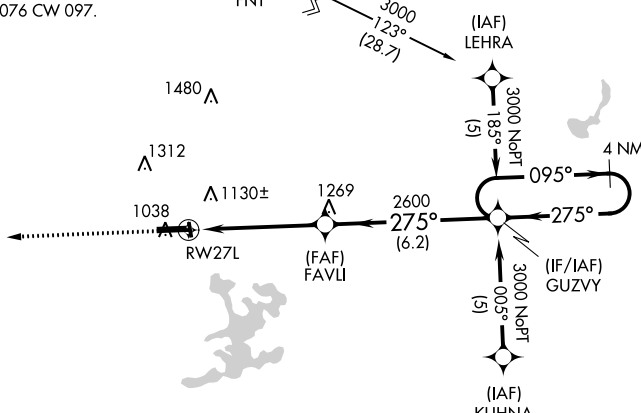
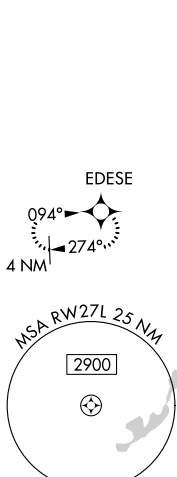
- ▼ For uncompensated Baro-VNAV systems, LNAV/VNAV NA below -16°C (4°F) or above 47°C (116°F).
- ▲ Baro-VNAV and VDP NA when using Coleman A Young altimeter setting. Circling Rwy 9L, 36 NA at night. When local altimeter setting not received, use Coleman A Young Muni altimeter setting and increase LPV DA to 1279 feet, LNAV/VNAV DA to 1568 and all MDA 120 feet, increase LPV and LNAV/VNAV all cats visibility ½ SM, LNAV Cat C/D, and Circling Cat C/D visibility ½ SM.

MISSED APPROACH:  
Climb to 3000 direct  
EDESE and hold.

ATIS <b>125.025</b>	DETROIT APP CON <b>132.35 284.0</b>	PONTIAC TOWER * <b>120.5 (CTAF) 0</b>	GND CON <b>121.9</b>	CLNC DEL <b>118.25</b>	UNICOM <b>122.95</b>
------------------------	--	--	-------------------------	---------------------------	-------------------------

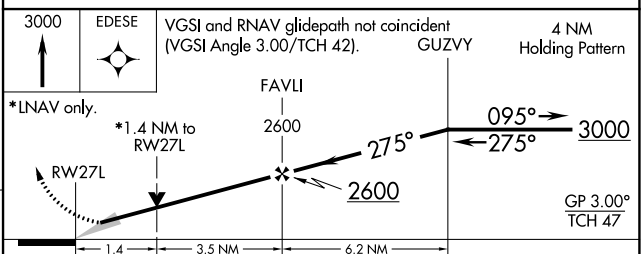
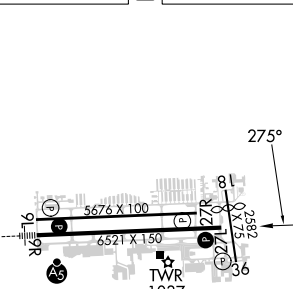
Procedure NA for arrivals on FNT VORTAC  
airway radials 076 CW 097.

FLINT  
FNT



▲1750

ELEV 981	<b>D</b>	TDZE 974
----------	----------	----------



CATEGORY	A	B	C	D
LPV DA	1174-3/4 200 (200-3/4)			
LNAV/VNAV DA	1463-1 3/4 489 (500-1 3/4)			
LNAV MDA	1460-1	486 (500-1)	1460-1 1/4 486 (500-1 1/4)	1460-1 1/2 486 (500-1 1/2)
<b>C</b> CIRCLING	1500-1 519 (600-1)	1540-1 559 (600-1)	1640-1 3/4 659 (700-1 3/4)	1640-2 659 (700-2)

- HIRL Rwy 9R-27L
- MIRL Rwy 9L-27R
- REIL Rwy 27L
- REIL Rwy 9L and 27R

EC-1, 22 FEB 2024 to 21 MAR 2024

EC-1, 22 FEB 2024 to 21 MAR 2024

