

APP CRS	Rwy Idg	3621
147°	TDZE	894
	Apt Elev	894

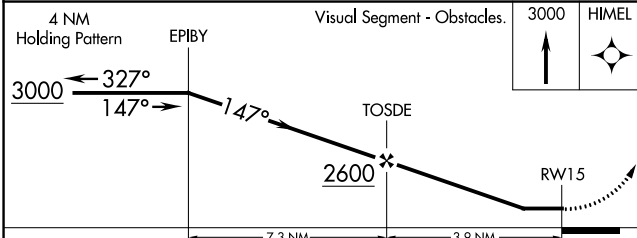
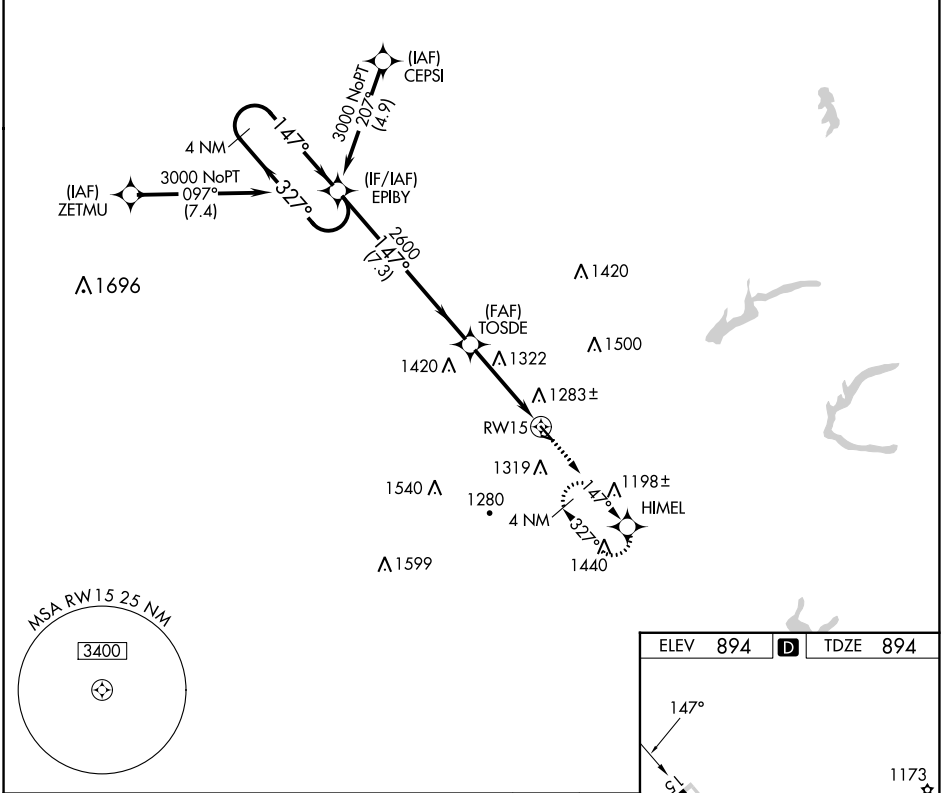
RNAV (GPS) RWY 15

HARRY CLEVER FLD (PHD)

RNP APCH.
 ⚠ Circling NA to Rwys 12 and 30. Procedure NA at night. Rwy 15 helicopter visibility reduction below 1 SM NA.

MISSED APPROACH: Climb to 3000 direct HIMEL and hold, continue climb-in-hold to 3000.

ASOS 121.425	CLEVELAND APP CON ★ 125.5 371.875	UNICOM 122.8 (CTAF)	123.3 0
------------------------	---	-------------------------------	----------------



ELEV	894	D	TDZE	894
------	-----	---	------	-----

3D perspective view of RWY 15 showing runway dimensions: 3051 x 100 feet and 1907 x 70 feet. Elevation of 1173 feet is indicated.

REIL Rwys 15 and 33 0
 MIRL Rwy 15-33 0

CATEGORY	A	B	C	D
LNVA MDA	1580-1	686 (700-1)	NA	
CIRCLING	1620-1 726 (800-1)	1640-1 746 (800-1)	NA	

EC-2, 22 FEB 2024 to 21 MAR 2024

EC-2, 22 FEB 2024 to 21 MAR 2024

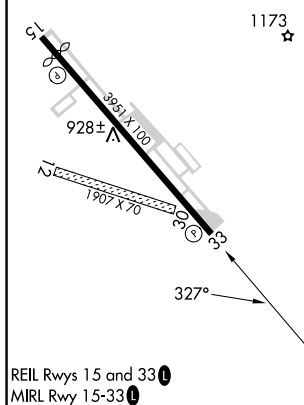
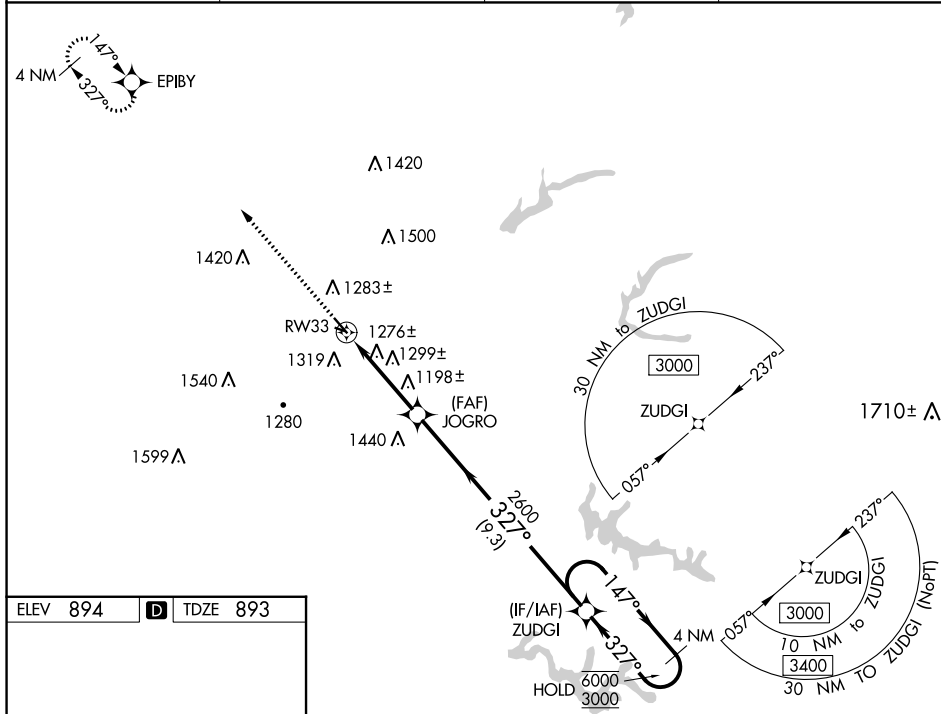
WAAS CH 70343 W33A	APP CRS 327°	Rwy Idg TDZE 893 Apt Elev 894	3634
--	------------------------	---	-------------

RNAV (GPS) RWY 33

HARRY CLEVER FLD (PHD)

RNP APCH.	<p>▽ Circling NA to Rwy 12 and 30. Rwy 33 helicopter visibility reduction below 1 SM NA. Procedure NA at night.</p>	MISSED APPROACH: Climb to 3000 direct EPIBY and hold.
-----------	--	--

ASOS 121.425	CLEVELAND APP CON* 125.5 371.875	UNICOM 122.8 (CTAF)	123.3 ①
------------------------	--	-------------------------------	-----------------------



ELEV 894	D	TDZE 893	
3000	EPIBY	4 NM Holding Pattern	
↑	✦		
JOGRO	ZUDGI		
147°	147°	6000	
327°	327°	3000	
3.9 NM	9.3 NM		
RWY 33	4.00° TCH 54	2600	
327°			
1173			
REIL Rwy 15 and 33 ①			
MIRL Rwy 15-33 ①			
CIRCLING	1620-1 726 (800-1)	1640-1 746 (800-1)	NA

EC-2, 22 FEB 2024 to 21 MAR 2024

EC-2, 22 FEB 2024 to 21 MAR 2024

VOR/DME BSV 114.05 Chan 87 (Y)	APP CRS 182°	Rwy Idg TDZE Apt Elev	N/A N/A 894
--	------------------------	-----------------------------	--

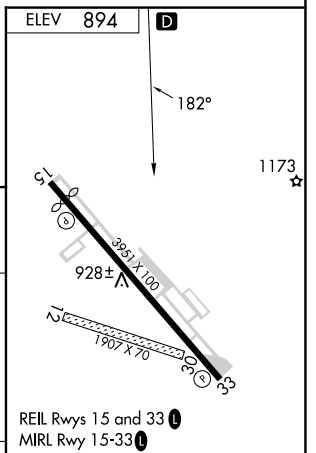
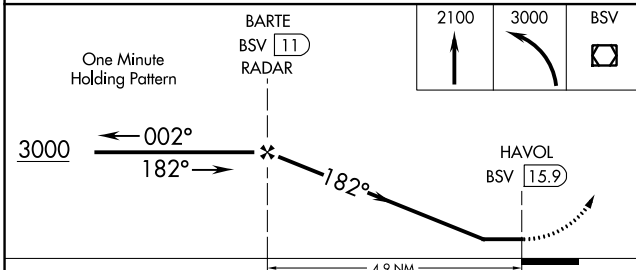
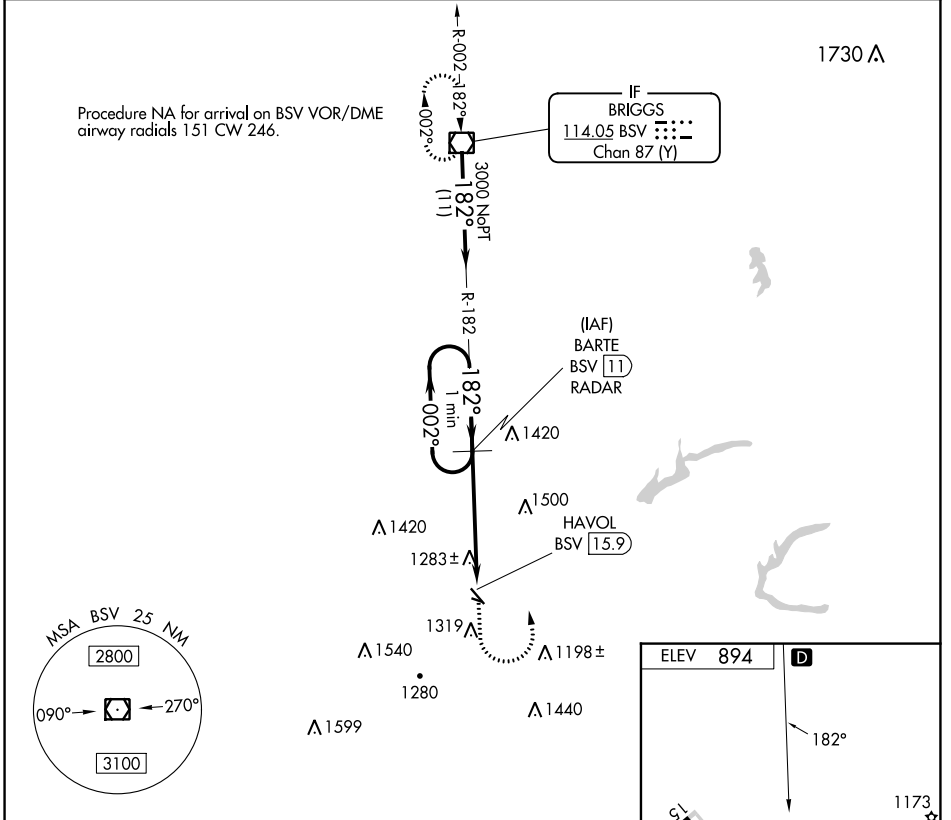
VOR-A
HARRY CLEVER FLD (PHD)

DME or RADAR required.

⚠ Circling NA to Rwys 12 and 30. Rwy 15, 33 helicopter visibility reduction below 1 SM NA. Procedure NA at night.

MISSED APPROACH: Climb to 2100 then climbing left turn to 3000 direct BSV VOR/DME and hold.

ASOS 121.425	CLEVELAND APP CON* 125.5 371.875	UNICOM 122.8 (CTAF)	123.3 0
------------------------	--	-------------------------------	----------------



CATEGORY	A	B	C	D	FAF to MAP 4.9 NM						
CIRCLING	1720-1¼	826 (900-1¼)	1720-2½	826 (900-2½)	NA	Knots	60	90	120	150	180
						Min:Sec	4:54	3:16	2:27	1:58	1:38

EC-2, 22 FEB 2024 to 21 MAR 2024

EC-2, 22 FEB 2024 to 21 MAR 2024