

WAAS CH <b>50133</b> <b>W11A</b>	APP CRS <b>105°</b>	Rwy Idg <b>3302</b> TDZE <b>1183</b> Apt Elev <b>1183</b>
--	------------------------	---

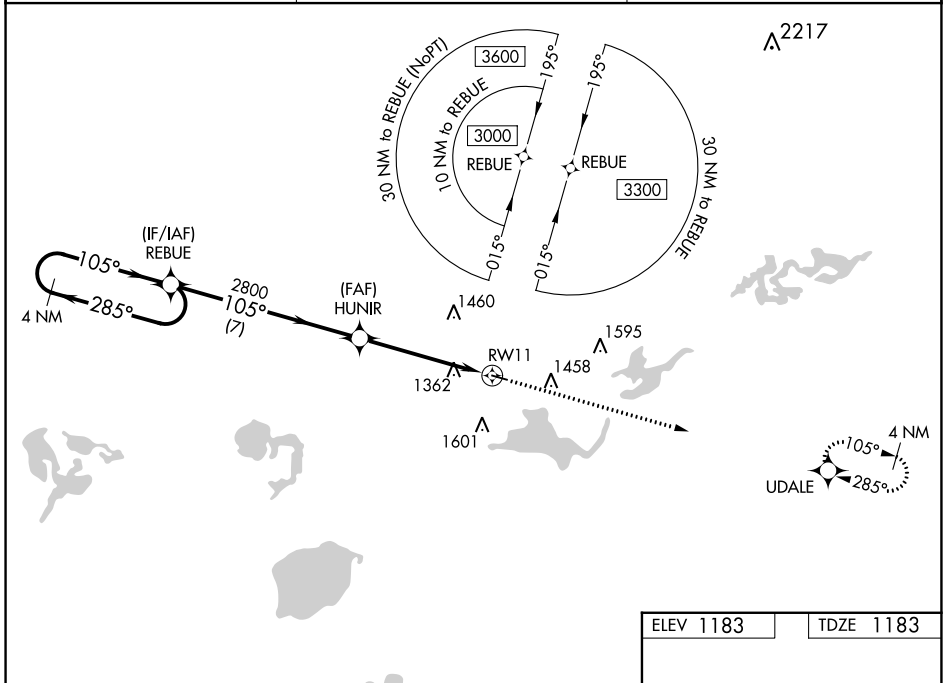
# RNAV (GPS) RWY 11

PAYNESVILLE MUNI (PEX)

**⚠** Baro-VNAV and VDP NA when using Litchfield altimeter setting. For uncompensated Baro-VNAV systems, LNAV/VNAV NA below -17°C (2°F) or above 54°C (130°F). DME/DME RNP-0.3 NA. When local altimeter setting not received, use Litchfield altimeter setting and increase all DA 51 feet and all MDA 60 feet; increase LPV and LNAV/VNAV all Cats visibility 1/8 mile and LNAV Cat C and Circling Cat C visibility 1/4 mile.

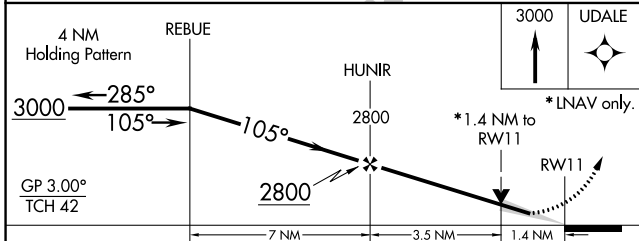
**MISSED APPROACH:**  
Climb to 3000 direct UDAL E and hold.

AWOS-3PT <b>120.35</b>	MINNEAPOLIS CENTER <b>125.5 323.1</b>	CTAF <b>122.9</b>
---------------------------	--	----------------------



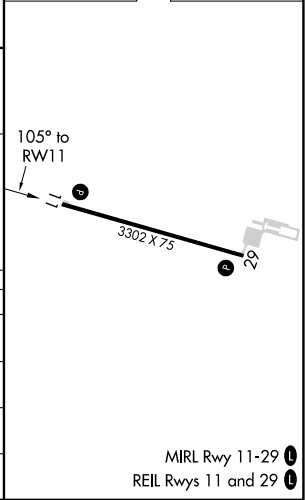
NC-1, 22 FEB 2024 to 21 MAR 2024

NC-1, 22 FEB 2024 to 21 MAR 2024



ELEV 1183	TDZE 1183
-----------	-----------

CATEGORY	A	B	C	D
LPV DA	1383-1 200 (200-1)			NA
LNAV/VNAV DA	1653-1 1/8 470 (500-1 1/8)			NA
LNAV MDA	1680-1	497 (500-1)	1680-1 1/8 497 (500-1 1/8)	NA
CIRCLING	1680-1 497 (500-1)	1760-1 577 (600-1)	1920-2 737 (800-2)	NA



MIRL Rwy 11-29 **⓪**  
REIL Rwy 11 and 29 **⓪**

WAAS CH <b>65633</b> <b>W29A</b>	APP CRS <b>285°</b>	Rwy Idg TDZE <b>1183</b> Apt Elev <b>1183</b>	<b>3302</b> <b>1183</b> <b>1183</b>
--	------------------------	---	---

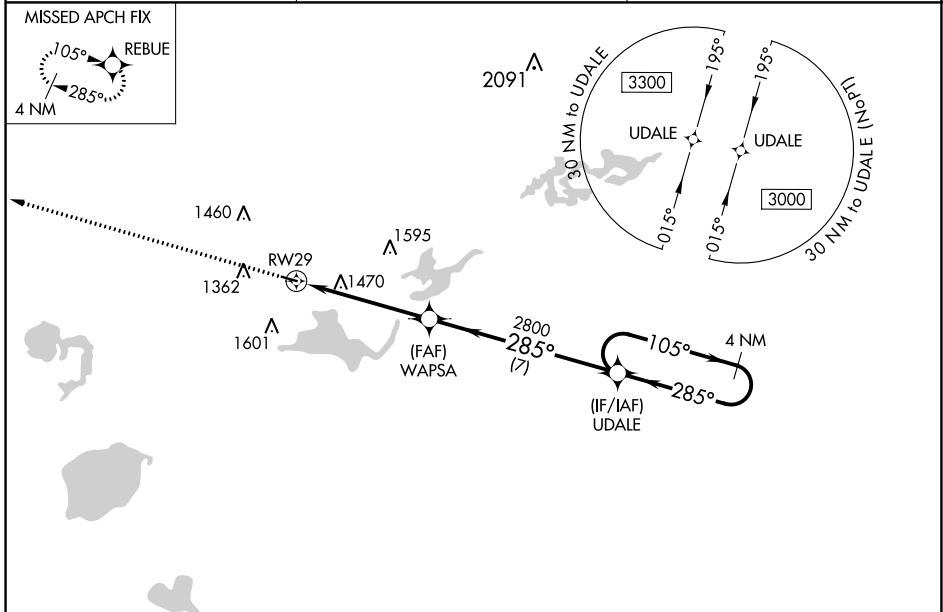
# RNAV (GPS) RWY 29

PAYNESVILLE MUNI (PEX)

**⚠** Baro-VNAV and VDP NA when using Litchfield altimeter setting. For uncompensated Baro-VNAV systems, LNAV/VNAV NA below -17°C (2°F) or above 54°C (130°F). DME/DME RNP-0.3 NA. Helicopter visibility reduction below ¾ SM NA. When local altimeter not received, use Litchfield altimeter setting and increase all DA 51 feet and all MDA 60 feet; increase LNAV/VNAV all Cats and LNAV and Circling Cat C visibility ¼ mile.

**MISSED APPROACH:**  
Climb to 3000 direct REBUE and hold.

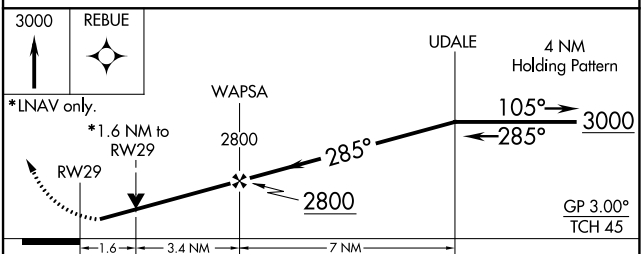
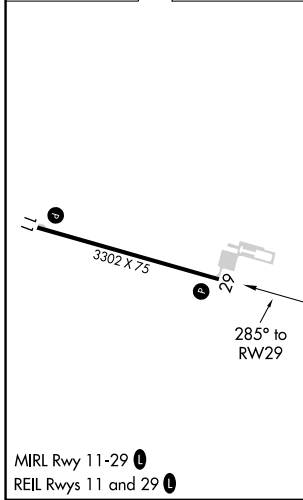
AWOS-3PT <b>120.35</b>	MINNEAPOLIS CENTER <b>125.5 323.1</b>	CTAF <b>122.9</b>
---------------------------	--	----------------------



NC-1, 22 FEB 2024 to 21 MAR 2024

NC-1, 22 FEB 2024 to 21 MAR 2024

ELEV 1183	TDZE 1183
-----------	-----------



CATEGORY	A	B	C	D
LPV DA	1383-1		200 (200-1)	NA
LNAV/VNAV DA	1810-2 ¼		627 (700-2 ¼)	NA
LNAV MDA	1720-1	537 (600-1)	1720-1 ½ 537 (600-1 ½)	NA
CIRCLING	1720-1 537 (600-1)	1760-1 577 (600-1)	1920-2 737 (800-2)	NA