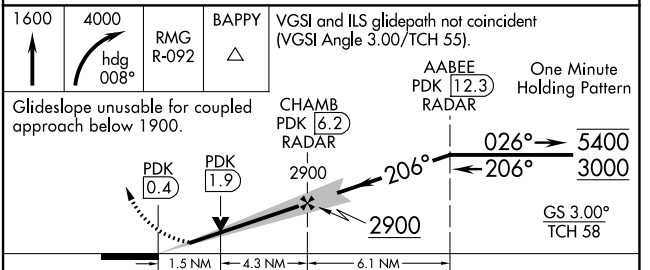
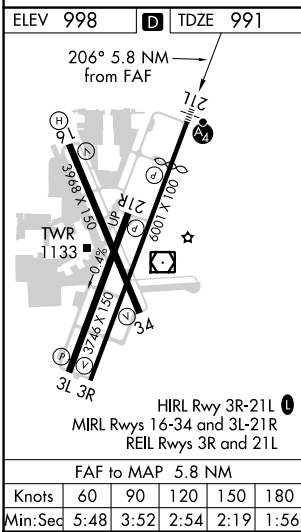
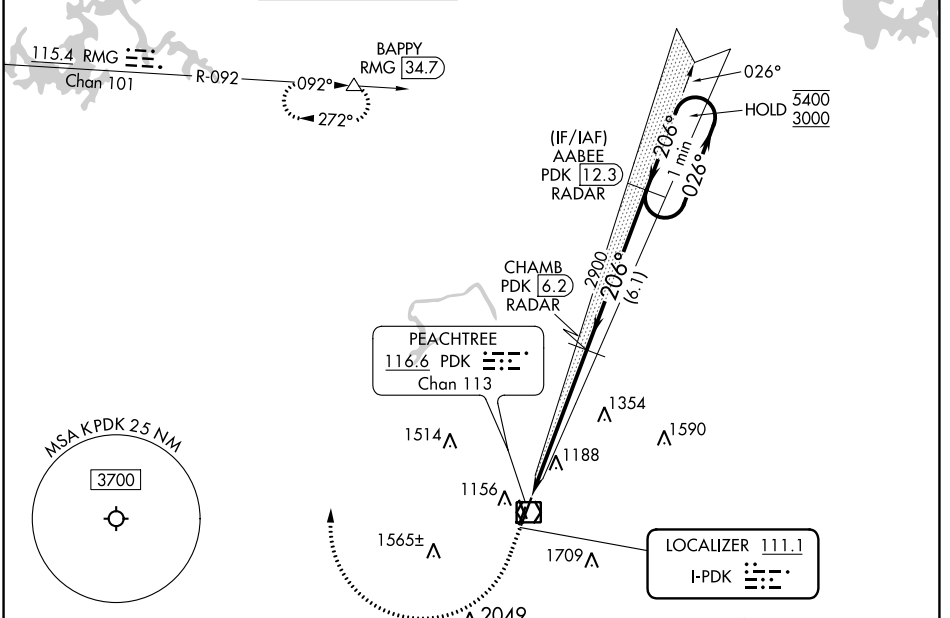


LOC I-PDK <b>111.1</b>	APP CRS <b>206°</b>	Rwy Idg TDZE Apt Elev	<b>4996</b> <b>991</b> <b>998</b>
---------------------------	------------------------	-----------------------------	---

# ILS or LOC RWY 21L

DEKALB-PEACHTREE (PDK)

RADAR required for procedure entry. DME or RADAR required.				MALSF		MISSED APPROACH: Climb to 1600 then climbing right turn to 4000 on heading 008° and RMG VORTAC R-092 to BAPPY/RMG 34.7 DME and hold.	
⚠ Circling Rwy 16, 34 NA at night. DME from PDK VOR/DME. Simultaneous reception of I-PDK and PDK DME required. Rwy 21L helicopter visibility reduction below RVR 4000 NA. For inop ALS, increase S-LOC 21L Cat A/B visibility to RVR 5500.							
ATIS <b>128.4</b>	ATLANTA APP CON <b>126.975 239.275</b>	PEACHTREE TOWER ★ <b>120.9 (CTAF) 281.5</b>	GND CON <b>121.6</b>	CLNC DEL <b>125.2</b>	CLNC DEL <b>120.9</b> (When twr closed)	UNICOM <b>122.95</b>	<b>120.0</b>



CATEGORY	A	B	C	D
S-ILS 21L	1330/40		339 (400-¾)	
S-LOC 21L	1520/40	529 (600-¾)	1520-1¼	529 (600-1¼)
☑ CIRCLING	1520-1 522 (600-1)		1840-2½ 842 (900-2½)	2060-3 1062 (1100-3)

SE-4, 22 FEB 2024 to 21 MAR 2024

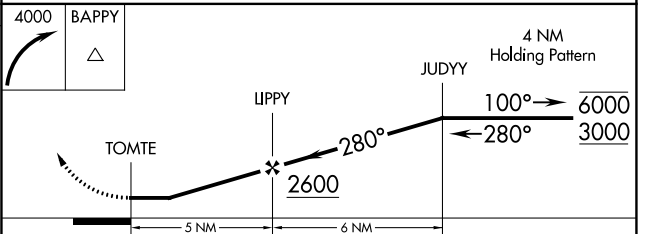
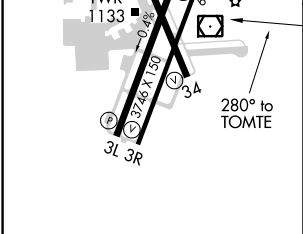
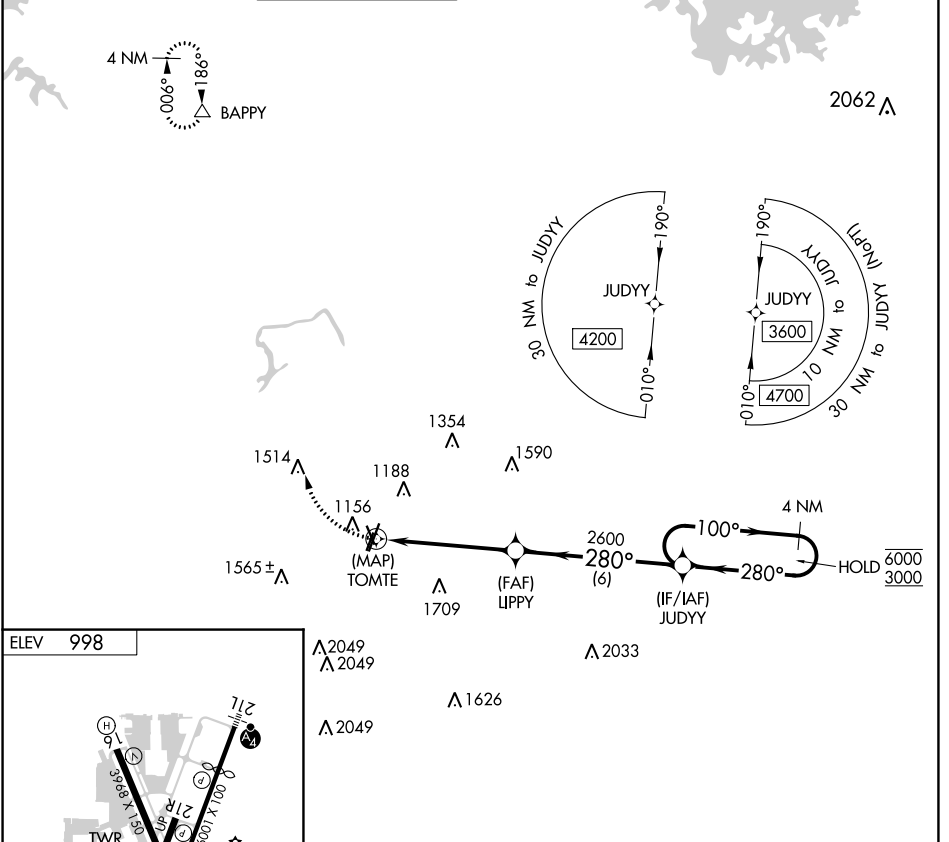
SE-4, 22 FEB 2024 to 21 MAR 2024

APP CRS	Rwy Idg	N/A
<b>280°</b>	TDZE	N/A
	Apt Elev	<b>998</b>

# RNAV (GPS)-A

DEKALB-PEACHTREE (PDK)

RNP APCH.		MISSED APPROACH: Climbing right turn to 4000 direct BAPPY and hold.							
<p>Circling Rwy 16, 34 NA at night.</p>		ATIS	ATLANTA APP CON	PEACHTREE TOWER ★	GND CON	CLNC DEL	CLNC DEL	UNICOM	
128.4	126,975 239,275	120.9 (CTAF) 281.5	121.6	125.2	120.9	(When twr closed)	122.95	120.0	



CATEGORY	A	B	C	D
CIRCLING	1580-1	582 (600-1)	1840-2½ 842 (900-2½)	2060-3 1062 (1100-3)

SE-4, 22 FEB 2024 to 21 MAR 2024

SE-4, 22 FEB 2024 to 21 MAR 2024

APP CRS	Rwy Idg	<b>5411</b>
<b>026°</b>	TDZE	<b>996</b>
	Apt Elev	<b>998</b>

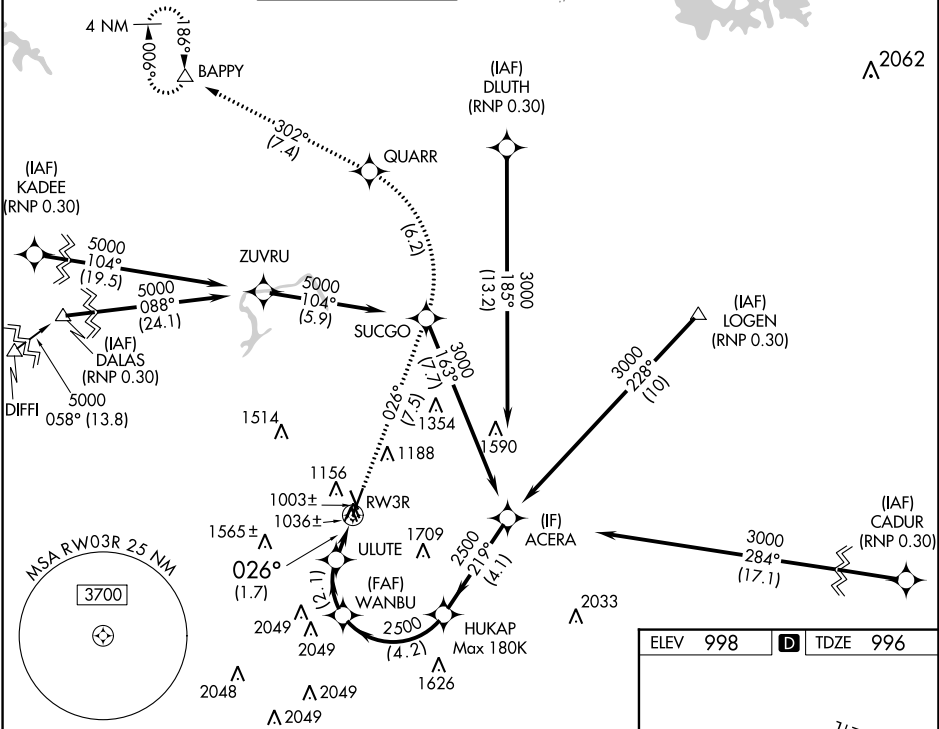
# RNAV (RNP) RWY 3R

DEKALB-PEACHTREE (PDK)

**▽** For uncompensated Baro-VNAV systems, procedure NA below 1°C (33°F) or above 45°C (114°F).  
RF required. GPS required.

MISSED APPROACH: Climb to 4000 on track 026° to SUCGO then left turn to QUARR then on track 302° to BAPPY and hold.

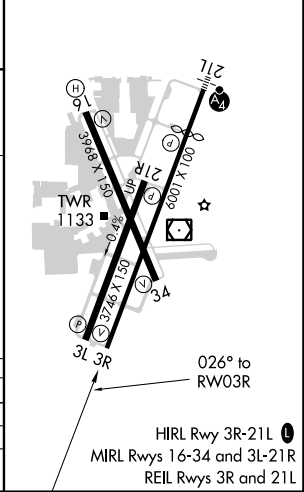
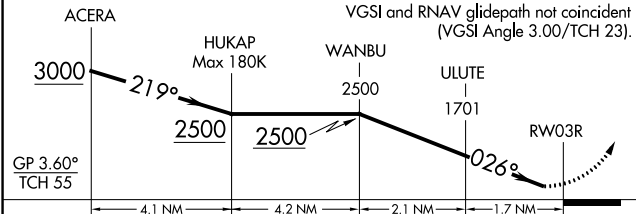
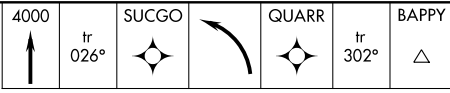
ATIS	ATLANTA APP CON	PEACHTREE TOWER ★	GND CON	CLNC DEL	CLNC DEL	UNICOM	<b>120.0</b>
<b>128.4</b>	<b>126.975 239.275</b>	<b>120.9(CTAF) 281.5</b>	<b>121.6</b>	<b>125.2</b>	<b>120.9</b> (When twr closed)	<b>122.95</b>	



SE-4, 22 FEB 2024 to 21 MAR 2024

SE-4, 22 FEB 2024 to 21 MAR 2024

ELEV	<b>998</b>	<b>D</b>	TDZE	<b>996</b>
------	------------	----------	------	------------



CATEGORY	A	B	C	D
RNP 0.10 DA	1334-1	338 (400-1)		NA
RNP 0.30 DA	1441-1 3/8	445 (500-1 3/8)		NA

## AUTHORIZATION REQUIRED

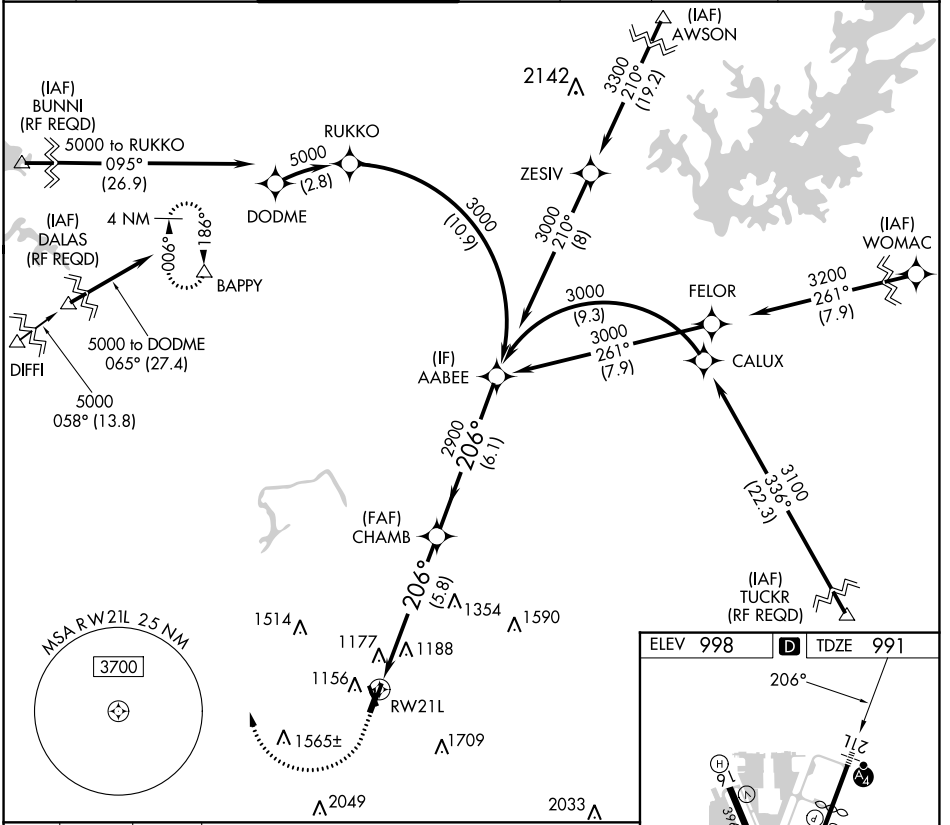
APP CRS <b>206°</b>	Rwy Idg TDZE Apt Elev	<b>4996</b> <b>991</b> <b>998</b>
------------------------	-----------------------------	---

# RNAV (RNP) Z RWY 21L

DEKALB-PEACHTREE (PDK)

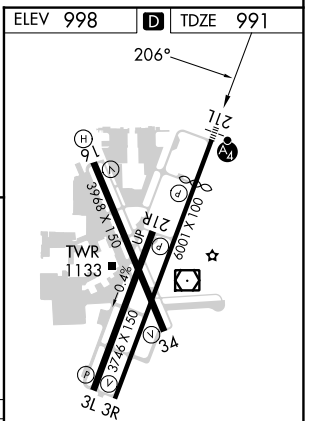
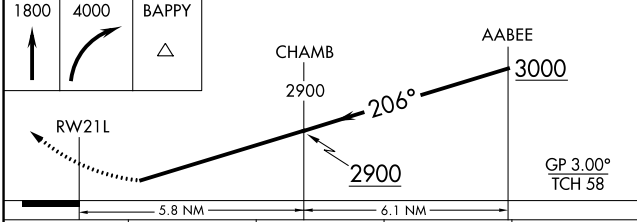
For uncompensated Baro-VNAV systems, procedure NA below 1°C (37°F) or above 54°C (130°F). For inop MALSF, increase RNP 0.30 all Cats visibility to 1¾. GPS required.	<b>MALS F</b> 	<b>MISSED APPROACH:</b> Climb to 1800 then climbing right turn to 4000 direct BAPPY and hold.

ATIS <b>128.4</b>	ATLANTA APP CON <b>126,975 239,275</b>	PEACHTREE TOWER★ <b>120.9(CTAF) 281.5</b>	GND CON <b>121.6</b>	CLNC DEL <b>125.2</b>	CLNC DEL <b>120.9</b> (When twr closed)	UNICOM <b>122.95</b>	<b>120.0</b>
----------------------	---	--	-------------------------	--------------------------	---	-------------------------	--------------



SE-4, 22 FEB 2024 to 21 MAR 2024

SE-4, 22 FEB 2024 to 21 MAR 2024



CATEGORY	A	B	C	D
RNP 0.30 DA		1502-1¾	511 (600-1¾)	

**AUTHORIZATION REQUIRED**

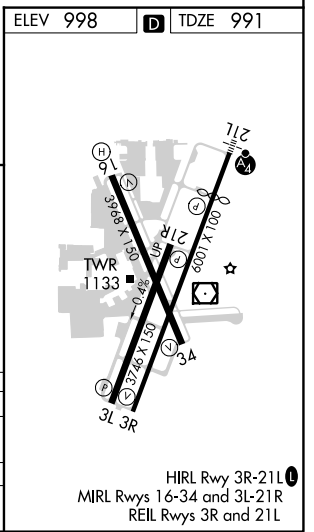
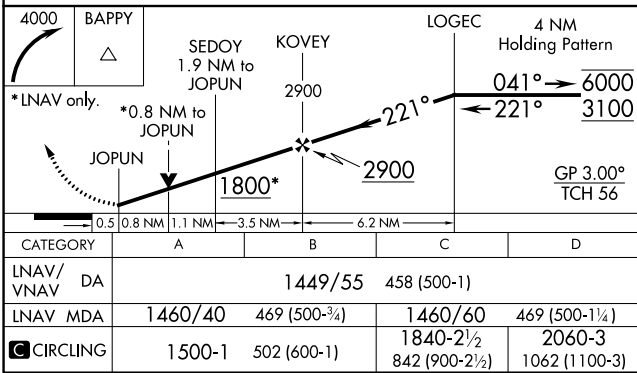
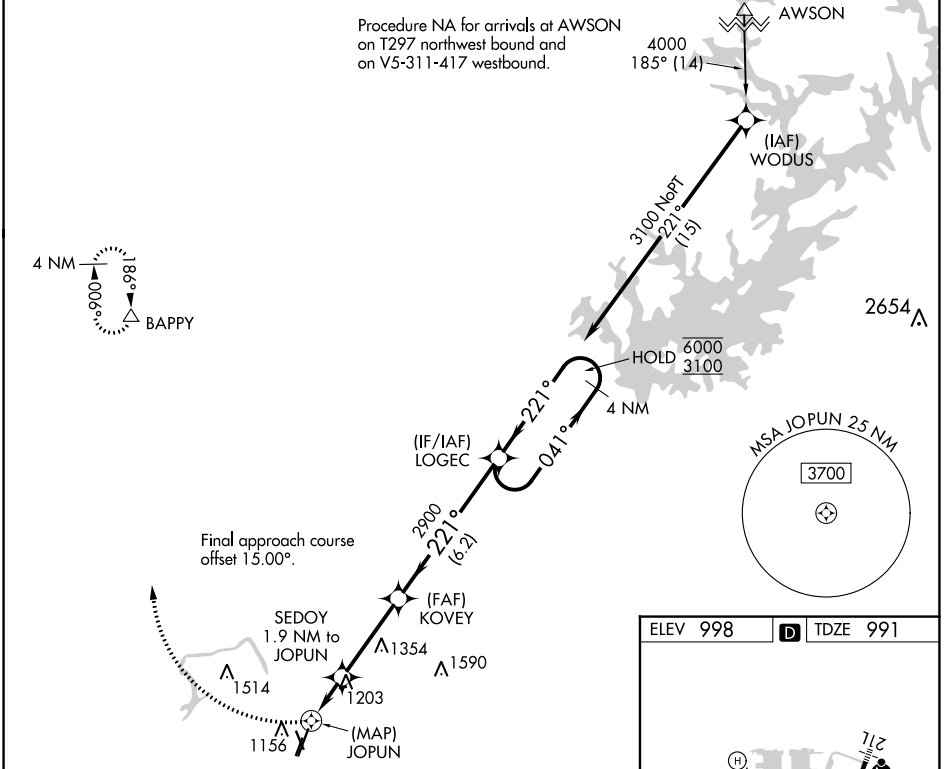
HIRL Rwy 3R-21L **1**  
 MIRL Rwy 16-34 and 3L-21R  
 REIL Rwy 3R and 21L

# RNAV (GPS) Y RWY 21L

DEKALB-PEACHTREE (PDK)

APP CRS <b>221°</b>	Rwy Idg <b>4996</b>
	TDZE <b>991</b>
	Apt Elev <b>998</b>

RNP APCH.				MALSF		MISSED APPROACH: Climbing right turn to 4000 direct BAPPY and hold.	
<p>⚠ Circling Rwy 16, 34 NA at night. Rwy 21L helicopter visibility reduction below 3/4 SM NA. For uncompensated Baro-VNAV systems, procedure NA below -8°C or above 54°C. For inop ALS, increase LNAV/VNAV all Cats visibility to 1/2 SM and LNAV Cat A/B visibility to RVR 5500.</p>							
ATIS <b>128.4</b>	ATLANTA APP CON <b>126,975 239,275</b>	PEACHTREE TOWER★ <b>120.9(CTAF) 281.5</b>	GND CON <b>121.6</b>	CLNC DEL <b>125.2</b>	CLNC DEL <b>120.9</b> (When twr closed)	UNICOM <b>122.95</b>	<b>120.0</b>



SE-4, 22 FEB 2024 to 21 MAR 2024

SE-4, 22 FEB 2024 to 21 MAR 2024