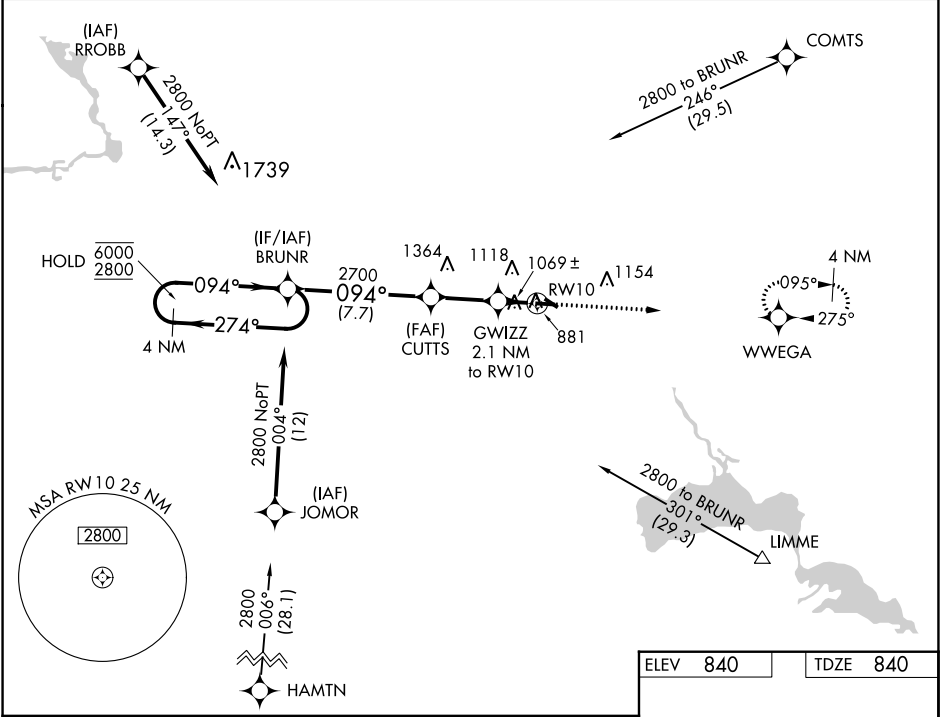


WAAS CH <b>63120</b> <b>W10A</b>	APP CRS <b>094°</b>	Rwy Idg TDZE Apt Elev	<b>5200</b> <b>840</b> <b>840</b>
--	------------------------	-----------------------------	---

# RNAV (GPS) RWY 10

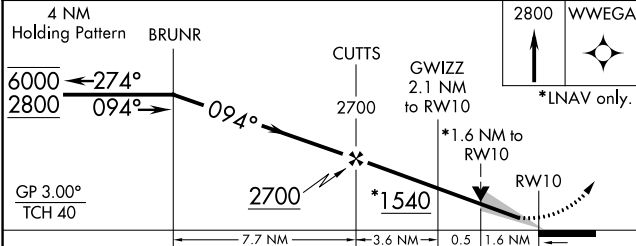
WAUPACA MUNI (PCZ)

RNP APCH.		MISSED APPROACH: Climb to 2800 direct WVEGA and hold.
<p><b>▽</b> For uncompensated Baro-VNAV systems, LNAV/VNAV  <b>▲</b> NA below -16°C or above 54°C.</p>		
AWOS-3 <b>118.625</b>	MINNEAPOLIS CENTER <b>124.4 317.7</b>	UNICOM <b>122.8 (CTAF) 0</b>



EC-3, 22 FEB 2024 to 21 MAR 2024

EC-3, 22 FEB 2024 to 21 MAR 2024



ELEV	840	TDZE	840
4 NM Holding Pattern BRUNR		2800 WVEGA	*LNAV only.
6000	2800	094°	274°
GP 3.00°	TCH 40	2700	*1540
7.7 NM		3.6 NM	0.5
CUTTS		GWIZZ	2.1 NM to RW10
RW10		*1.6 NM to RW10	
CATEGORY		A	B
LPV	DA	1090-3/4	250 (300-3/4)
LNAV/VNAV	DA	1384-15/8	544 (600-15/8)
LNAV	MDA	1380-1	540 (600-1)
CIRCLING		1380-1	1420-1
		540 (600-1)	580 (600-1)
		1420-1 1/2	1500-2
		580 (600-1 1/2)	660 (700-2)
REIL Rwy 10 and 28 0 MIRL Rwy 10-28 and 13-31 0			

WAAS CH <b>42621</b> <b>W28A</b>	APP CRS <b>275°</b>	Rwy Idg TDZE Apt Elev	<b>5200</b> <b>827</b> <b>840</b>
--	------------------------	-----------------------------	---

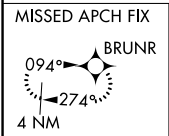
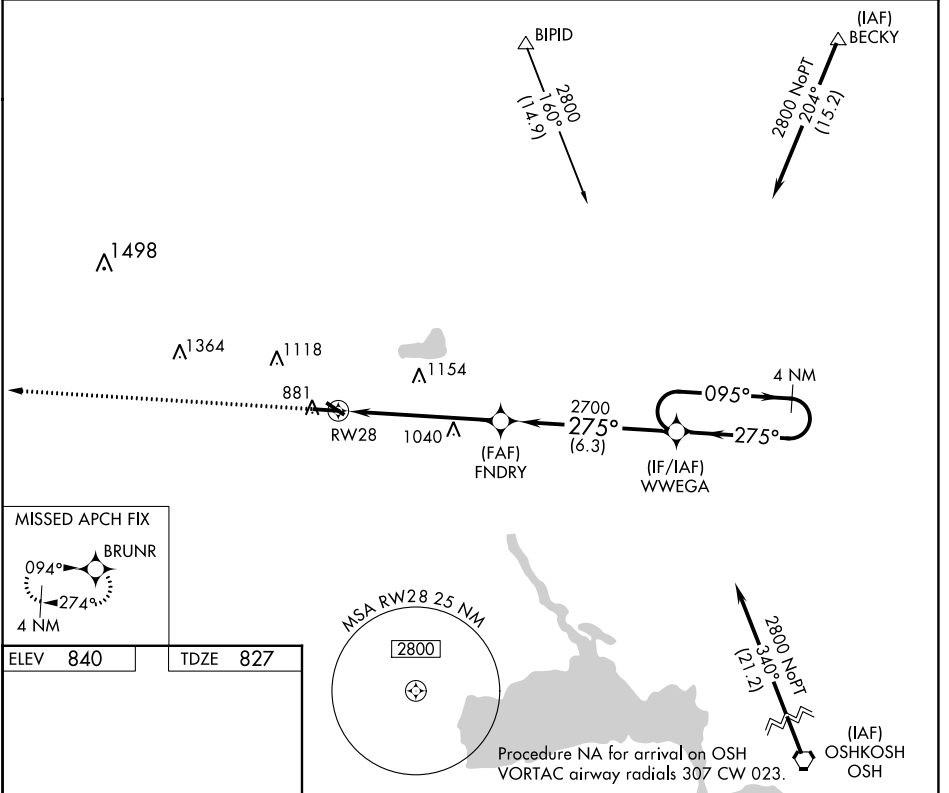
# RNAV (GPS) RWY 28

WAUPACA MUNI (PCZ)

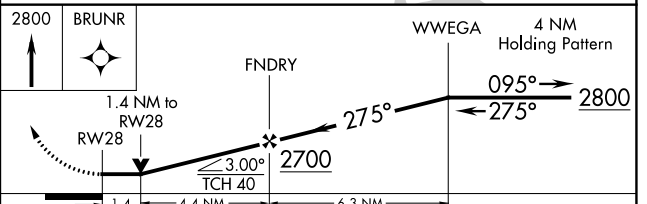
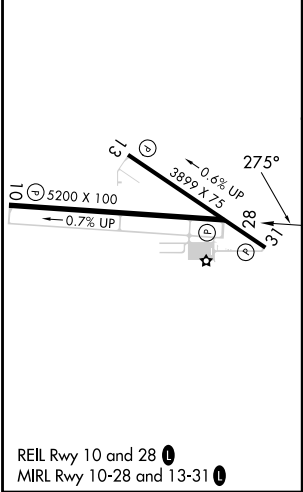
**▼** Rwy 28 helicopter visibility reduction below 3/4 SM NA.  
DME/DME RNP-0.3 NA.

MISSED APPROACH: Climb to 2800 direct BRUNR and hold.

AWOS-3 <b>118.625</b>	MINNEAPOLIS CENTER <b>124.4 317.7</b>	UNICOM <b>122.8 (CTAF)</b>
--------------------------	--	-------------------------------



ELEV 840	TDZE 827
----------	----------



CATEGORY	A	B	C	D
LP MDA	1260-1	433 (500-1)	1260-1 3/8	433 (500-1 3/8)
LNAV MDA	1340-1	513 (600-1)	1340-1 3/8	513 (600-1 3/8)
<b>C</b> CIRCLING	1380-1 540 (600-1)	1420-1 580 (600-1)	1420-1 1/2 580 (600-1 1/2)	1500-2 660 (700-2)

EC-3, 22 FEB 2024 to 21 MAR 2024

EC-3, 22 FEB 2024 to 21 MAR 2024