

NDB PCW 423	APP CRS 276°	Rwy Idg TDZE Apt Elev	5445 588 590
-----------------------	------------------------	-----------------------------	---

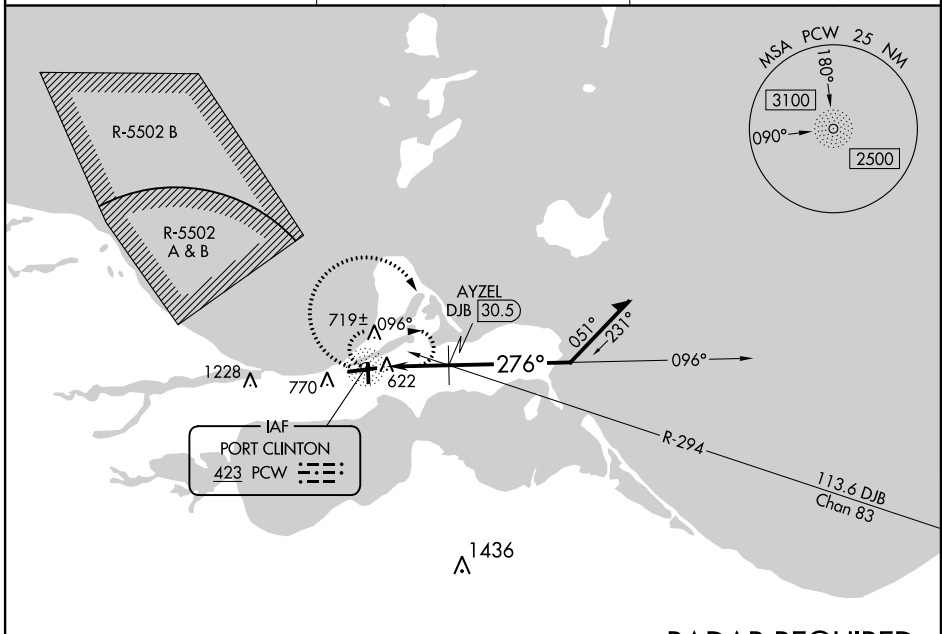
NDB RWY 27

ERIE-OTTAWA INTL (PCW)

NA When local altimeter setting not received, use Toledo Executive altimeter setting and increase all MDA 80 feet and all visibilities ¼ mile. Helicopter visibility reduction below ¾ SM NA.

MISSED APPROACH:
Climbing right turn to 2500 in PCW NDB holding pattern.

AWOS-3 118.775	CLEVELAND APP CON 126.35 346.325	UNICOM 122.8 (CTAF) 0
--------------------------	--	---------------------------------

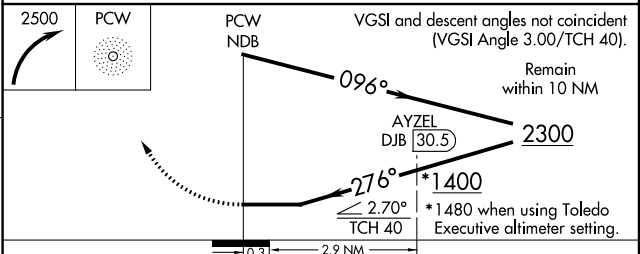
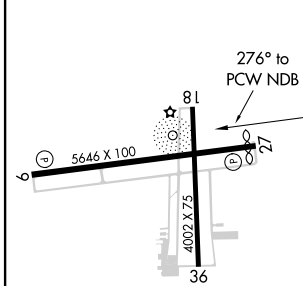


EC-2, 02 DEC 2021 to 30 DEC 2021

EC-2, 02 DEC 2021 to 30 DEC 2021

RADAR REQUIRED

ELEV 590	D	TDZE 588
----------	----------	----------



CATEGORY	A	B	C	D
S-27	1400-1 812 (900-1)	1400-1¼ 812 (900-1¼)	1400-2½	812 (900-2½)
C CIRCLING	1400-1 810 (900-1)	1400-1¼ 810 (900-1¼)	1400-2½ 810 (900-2½)	1580-3 990 (1000-3)
AYZEL FIX MINIMUMS (DME REQUIRED)				
S-27	1060-1	472 (500-1)	1060-1⅓	472 (500-1⅓)
C CIRCLING	1140-1	550 (600-1)	1180-1½ 590 (600-1½)	1580-3 990 (1000-3)

HIRL Rwy 9-27 **0**
MIRL Rwy 18-36 **0**
REIL Rwy 9 and 27 **0**

WAAS CH 58012 W27A	APP CRS 270°	Rwy ldg TDZE Apt Elev	5445 588 590
--	------------------------	-----------------------------	---

RNAV (GPS) RWY 27

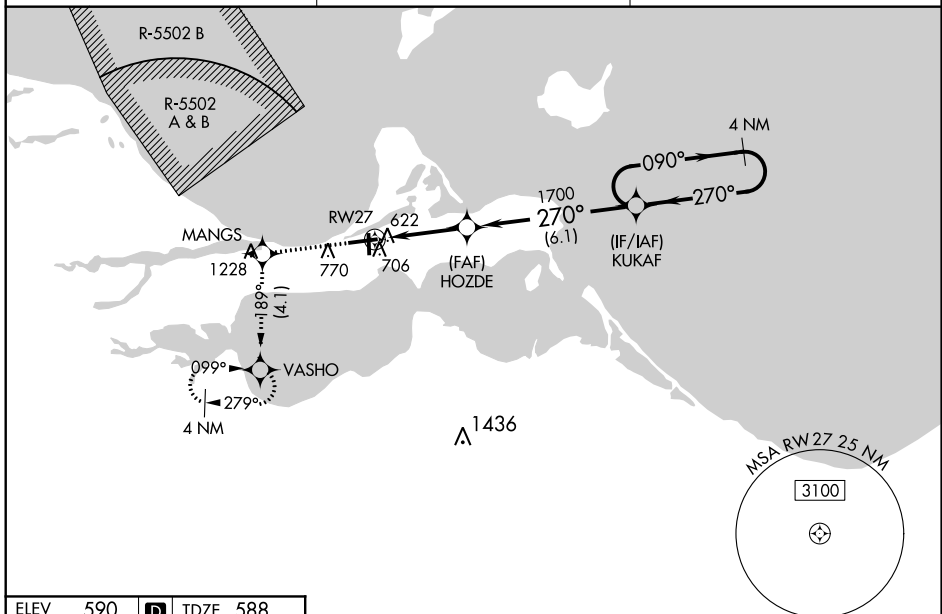
ERIE-OTTAWA INTL (PCW)

RNP APCH.

⚠ Baro-VNAV NA when using Toledo Executive altimeter setting. For uncompensated Baro-VNAV systems, LNAV/VNAV NA below -16°C (4°F) or above 54°C (130°F). Rwy 27 helicopter visibility reduction below ¼ SM NA. When local altimeter setting not received, use Toledo Executive altimeter setting and increase all DA/MDA 80 feet and all visibilities ¼ mile. Circling Rwy 18, 36 NA at night.

⚠ MISSED APPROACH: Climb to 3000 direct MANGS and on track 189° to VASHO and hold, continue climb-in-hold to 3000.

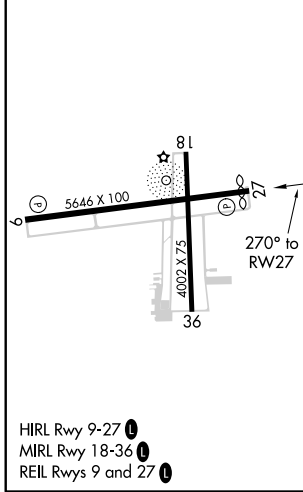
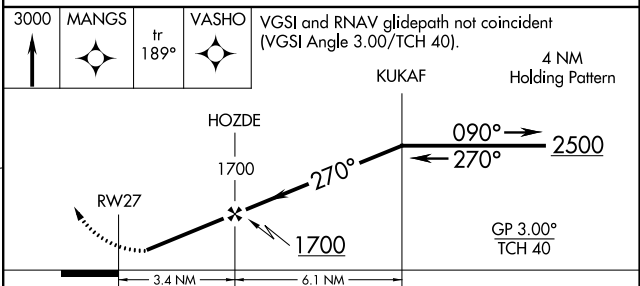
AWOS-3 118.775	CLEVELAND APP CON 126.35 346.325	UNICOM 122.8 (CTAF) 0
--------------------------	--	---------------------------------



EC-2, 02 DEC 2021 to 30 DEC 2021

EC-2, 02 DEC 2021 to 30 DEC 2021

ELEV 590	D	TDZE 588
----------	----------	----------



CATEGORY	A	B	C	D
LPV DA	910-1 1/8 322 (400-1 1/8)			
LNAV/VNAV DA	956-1 1/4 368 (400-1 1/4)			
LNAV MDA	980-1	392 (400-1)	980-1 1/8	392 (400-1 1/8)
C CIRCLING	1140-1	550 (600-1)	1180-1 1/2	1580-3
			590 (600-1 1/2)	990 (1000-3)

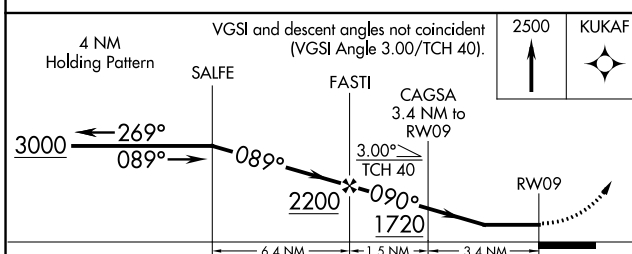
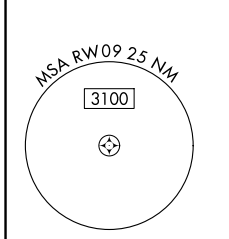
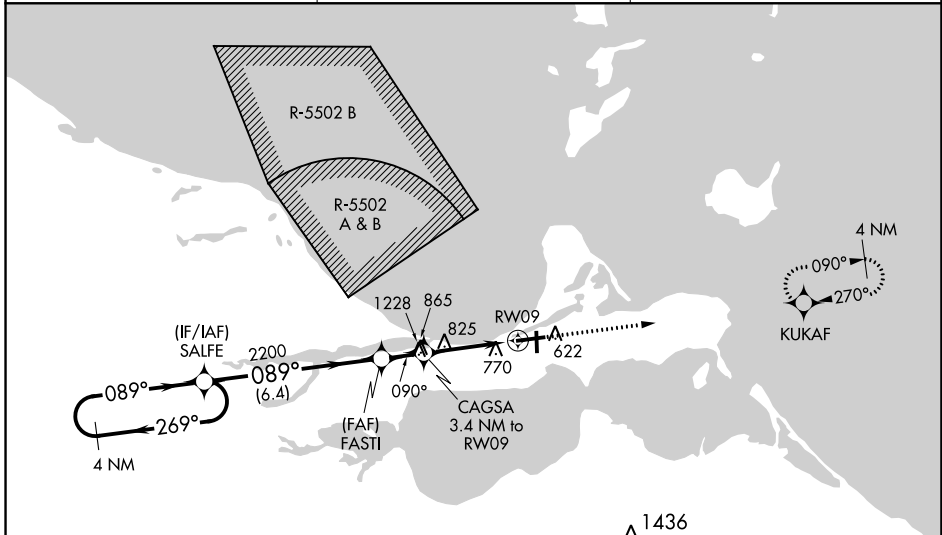
APP CRS	Rwy Idg	5161
090°	TDZE	590
	Apt Elev	590

RNAV (GPS) RWY 9

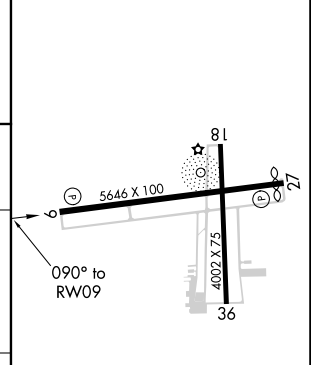
ERIE-OTTAWA INTL (PCW)

RNP APCH.	When local altimeter setting not received, use Toledo Executive altimeter setting and increase all MDA 80 feet and all Cat C/D visibilities ¼ mile. Rwy 9 helicopter visibility reduction below ¾ SM NA. Circling Rwy 18, 36 NA at night.	MISSED APPROACH: Climb to 2500 direct KUKAF and hold.
-----------	---	--

AWOS-3 118.775	CLEVELAND APP CON 126.35 346.325	UNICOM 122.8 (CTAF) 0
--------------------------	--	---------------------------------



ELEV 590	D TDZE 590
----------	-------------------



CATEGORY	A	B	C	D
LNVA MDA	1140-1	550 (600-1)	1140-1½	550 (600-1½)
C CIRCLING	1140-1	550 (600-1)	1180-1½ 590 (600-1½)	1580-3 990 (1000-3)

HIRL Rwy 9-27 0
MIRL Rwy 18-36 0
REIL Rwys 9 and 27 0

EC-2, 02 DEC 2021 to 30 DEC 2021

EC-2, 02 DEC 2021 to 30 DEC 2021