

LOC I-OCR 108.7	APP CRS 256°	Rwy ldg TDZE Apt Elev	5500 44 45
---------------------------	------------------------	-----------------------------	---------------------------------------

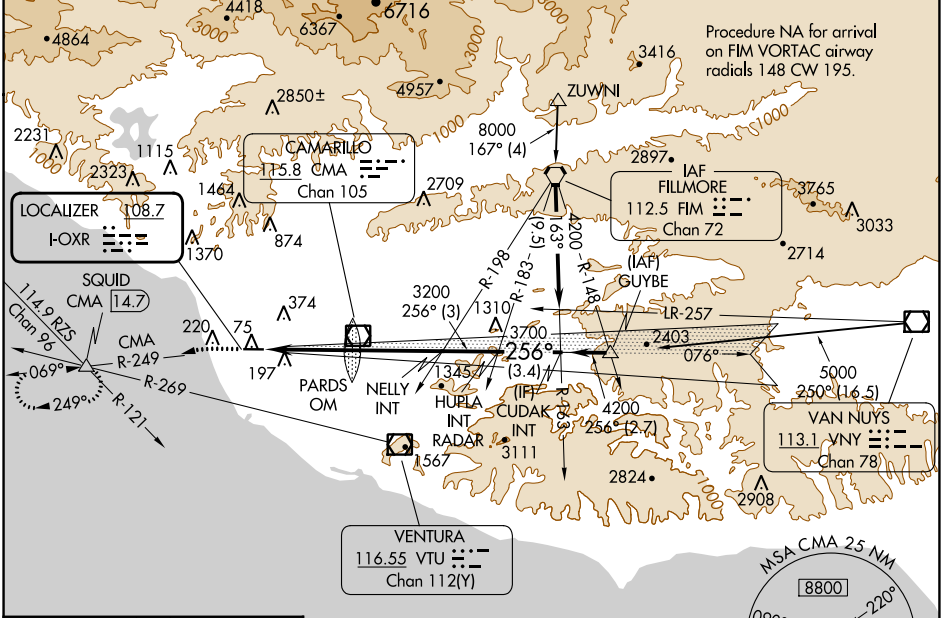
ILS or LOC RWY 25

OXNARD (OXR)

⚠ Rwy 25 helicopter visibility reduction below 3/4 SM NA. Autopilot coupled approach NA below 867. Inop table does not apply. When local altimeter setting not received, use Camarillo altimeter setting and increase S-ILS 25 DA to 312 and all MDA 20 feet, increase S-LOC 25 Cat C/D visibility 1/8 SM, and Circling Cat C visibility 1/4 SM.

MALSF
⚠ MISSED APPROACH: Climb to 520 then climbing left turn to 2000 on CMA VOR/DME R-249 to SQUID INT/14.7 DME and hold.

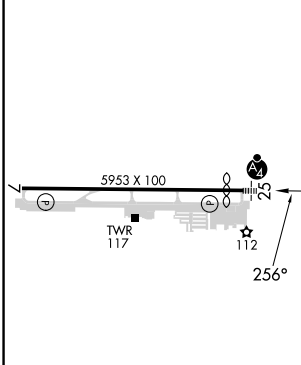
ATIS 118.05	POINT MUGU APP CON * 124.7 335.5	OXNARD TOWER * 134.95 (CTAF) 0 257.8	GND CON 121.9
-----------------------	--	--	-------------------------



SW-3, 22 FEB 2024 to 21 MAR 2024

SW-3, 22 FEB 2024 to 21 MAR 2024

ELEV 45	D	TDZE 44
---------	----------	---------



REIL Rwy 7 Ⓛ	MIRL Rwy 7-25 Ⓛ				
FAF to MAP 9.7 NM					
Knots	60	90	120	150	180
Min:Sec	9:42	6:28	4:51	3:53	3:14

520	2000	SQUID		
↑	↘	△		
*LOC only				
	PARDS OM	NELLY INT	HUPLA INT RADAR	CUDAK INT
	1683	3200	3700	4200
	1680*	3200	3700	4200
				GS 3.00°
				TCH 58
	4.9 NM	4.8 NM	3 NM	3.4 NM

CATEGORY	A	B	C	D
S-ILS 25	294-1 250 (300-1)			
S-LOC 25	580-1	536 (600-1)	580-1½	536 (600-1½)
CIRCLING	580-1	535 (600-1)	700-1¾ 655 (700-1¾)	760-2¼ 715 (800-2¼)

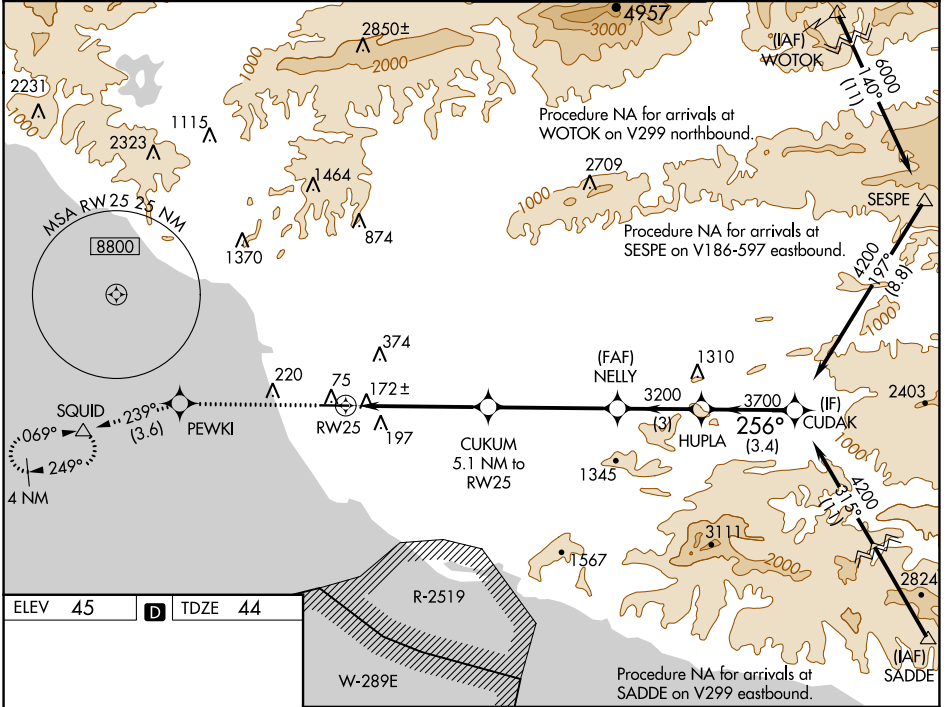
WAAS CH 86299 W25A	APP CRS 256°	Rwy Idg 5500 TDZE 44 Apt Elev 45
--	------------------------	---

RNAV (GPS) RWY 25

OXNARD (OXR)

RNP APCH-GPS.		MALSF	MISSED APPROACH: Climb to 2000 direct PEWKI and on track 239° to SQUID and hold.
<p>⚠ Inoperative table does not apply. Baro-VNAV NA when using Camarillo altimeter setting. For uncompensated Baro-VNAV systems, LNAV/VNAV NA below -15°C or above 43°C. When local altimeter setting not received, use Camarillo altimeter setting and increase LPV DA to 312 feet, increase LNAV/VNAV DA to 351 feet; increase all MDAs 20 feet and Circling Cat C visibility ¼ SM.</p>			

ATIS 118.05	POINT MUGU APP CON* 124.7 335.5	OXNARD TOWER* 134.95 (CTAF) 0 257.8	GND CON 121.9
-----------------------	---	---	-------------------------



ELEV 45	D	TDZE 44																								
		<table border="1"> <tr> <td>2000</td> <td>PEWKI</td> <td>tr 239°</td> <td>SQUID</td> <td colspan="2"></td> </tr> <tr> <td colspan="2">*LNAV only</td> <td>CUKUM 5.1 NM to RW25</td> <td>NELLY 3200</td> <td>HUPLA 3700</td> <td>CUDAK 4200</td> </tr> <tr> <td colspan="2">RW25</td> <td>1720*</td> <td>3200</td> <td>256°</td> <td>GP 3.00° TCH 58</td> </tr> <tr> <td colspan="2"></td> <td>5.1 NM</td> <td>4.6 NM</td> <td>3 NM</td> <td>3.4 NM</td> </tr> </table>	2000	PEWKI	tr 239°	SQUID			*LNAV only		CUKUM 5.1 NM to RW25	NELLY 3200	HUPLA 3700	CUDAK 4200	RW25		1720*	3200	256°	GP 3.00° TCH 58			5.1 NM	4.6 NM	3 NM	3.4 NM
2000	PEWKI	tr 239°	SQUID																							
*LNAV only		CUKUM 5.1 NM to RW25	NELLY 3200	HUPLA 3700	CUDAK 4200																					
RW25		1720*	3200	256°	GP 3.00° TCH 58																					
		5.1 NM	4.6 NM	3 NM	3.4 NM																					
CATEGORY	A	B	C	D																						
LPV DA	294-1 250 (300-1)																									
LNAV/VNAV DA	333-1 289 (300-1)																									
LNAV MDA	520-1	476 (500-1)	520-1 ³ / ₈	476 (500-1 ³ / ₈)																						
CIRCLING	520-1	475 (500-1)	700-1 ³ / ₄	760-2 ¹ / ₄ 655 (700-1 ³ / ₄) 715 (800-2 ¹ / ₄)																						

SW-3, 22 FEB 2024 to 21 MAR 2024

SW-3, 22 FEB 2024 to 21 MAR 2024

WAAS CH 72623 W07A	APP CRS 075°	Rwy Idg TDZE Apt Elev	5954 37 45
--	------------------------	-----------------------------	---------------------------------------

RNAV (GPS) RWY 7

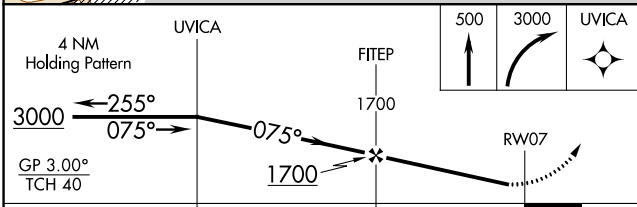
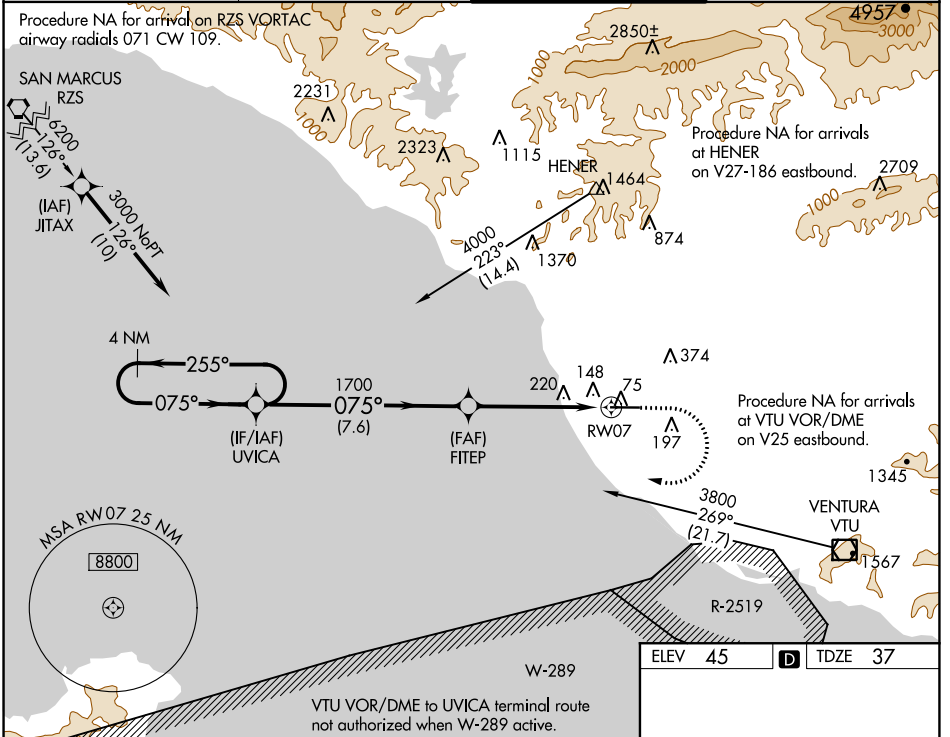
OXNARD (OXR)

RNP APCH-GPS.

Baro-VNAV NA when using Camarillo altimeter setting. For uncompensated Baro-VNAV systems, LNAV/VNAV NA below -15°C or above 43°C. When local altimeter setting not received, use Camarillo altimeter setting and increase LPV DA to 305 feet, increase LNAV/VNAV DA to 337 feet; increase all MDAs 20 feet and Circling Cat C visibility ¼ SM.

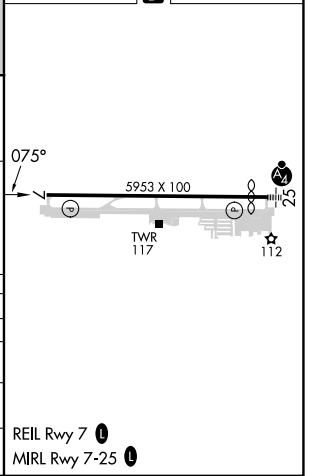
MISSED APPROACH: Climb to 500, then climbing right turn to 3000 direct UVICA and hold.

ATIS 118.05	POINT MUGU APP CON* 124.7 335.5	OXNARD TOWER* 134.95 (CTAF) 257.8	GND CON 121.9
-----------------------	---	---	-------------------------



ELEV 45	TDZE 37
---------	---------

CATEGORY	A	B	C	D
LPV DA		287-1	250 (300-1)	
LNAV/VNAV DA		319-1	282 (300-1)	
LNAV MDA	480-1	443 (500-1)	480-1 $\frac{3}{8}$	443 (500-1 $\frac{3}{8}$)
CIRCLING	500-1 455 (500-1)	520-1 475 (500-1)	700-1 $\frac{3}{4}$ 655 (700-1 $\frac{3}{4}$)	760-2 $\frac{1}{4}$ 715 (800-2 $\frac{1}{4}$)



SW-3, 22 FEB 2024 to 21 MAR 2024


SW-3, 22 FEB 2024 to 21 MAR 2024

VOR/DME CMA 115.8 Chan 105	APP CRS 247°	Rwy Idg 5500 TDZE 44 Apt Elev 45
---	------------------------	---

VOR RWY 25

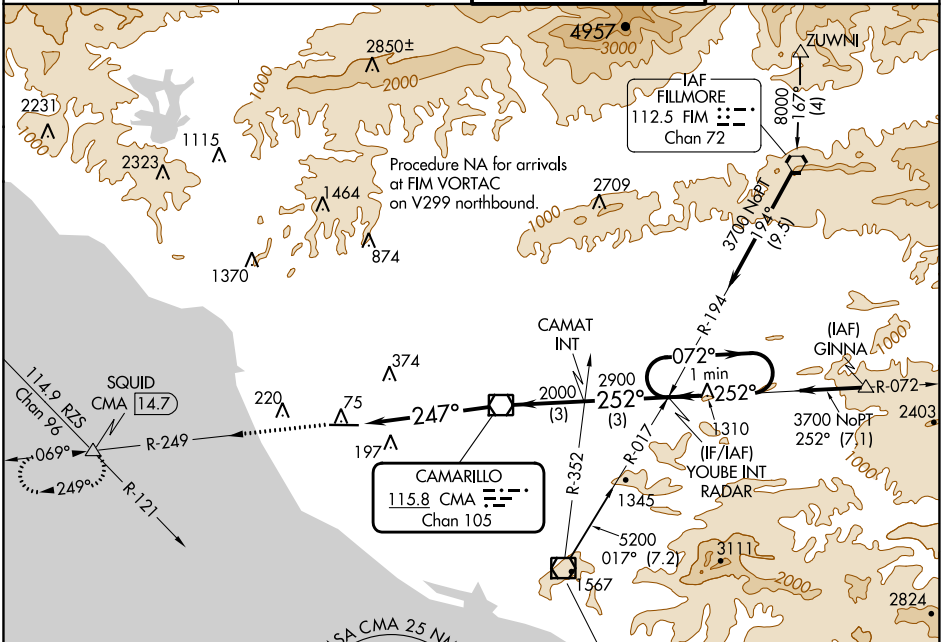
OXNARD (OXR)

⚠ Inop table does not apply. When local altimeter setting not received, use Camarillo altimeter setting and increase all MDAs 20 feet, increase Circling Cat C visibility ¼ SM. Rwy 25 helicopter visibility reduction below ¾ SM NA.

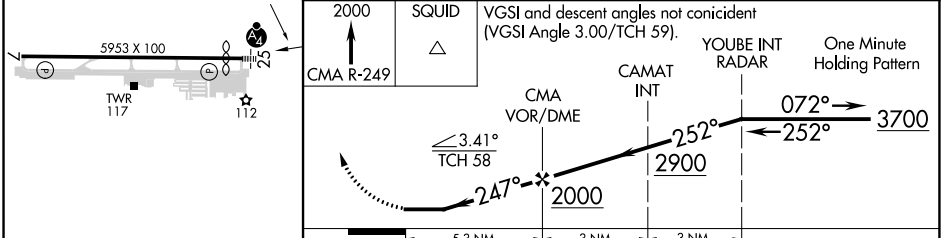
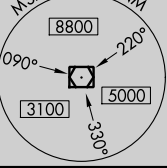
MALSF 


MISSED APPROACH: Climb to 2000 on CMA R-249 to SQUID INT/14.7 DME and hold.


ATIS 118.05	POINT MUGU APP CON* 124.7 335.5	OXNARD TOWER* 134.95 (CTAF) 257.8	GND CON 121.9
-----------------------	---	---	-------------------------



ELEV 45	D	TDZE 44
---------	----------	---------



REIL Rwy 7 

MIRL Rwy 7-25 

FAF to MAP 5.3 NM

Knots	60	90	120	150	180
Min:Sec	5:18	3:32	2:39	2:07	1:46

CATEGORY	A	B	C	D
S-25	540-1	496 (500-1)	540-1 3/8	496 (500-1 1/8)
CIRCLING	540-1	495 (500-1)	700-1 3/4 655 (700-1 1/4)	760-2 1/4 715 (800-2 1/4)

SW-3, 22 FEB 2024 to 21 MAR 2024

SW-3, 22 FEB 2024 to 21 MAR 2024