

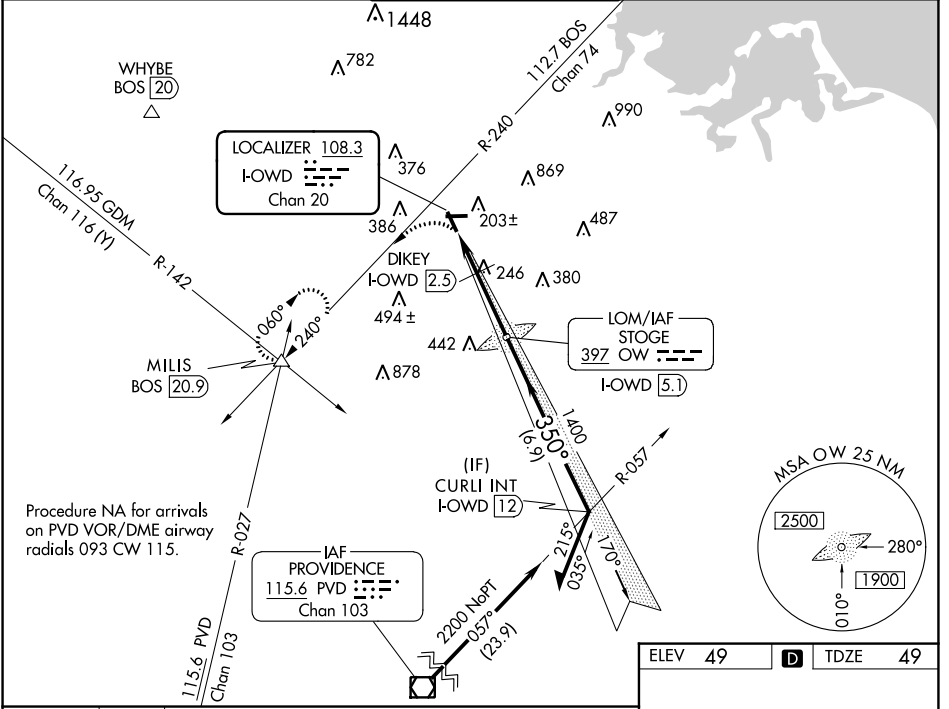
LOC/DME I-OWD 108.3 Chan 20	APP CRS 350°	Rwy Idg 4007 TDZE 49 Apt Elev 49
--	------------------------	---

LOC RWY 35

NORWOOD MEML (OWD)

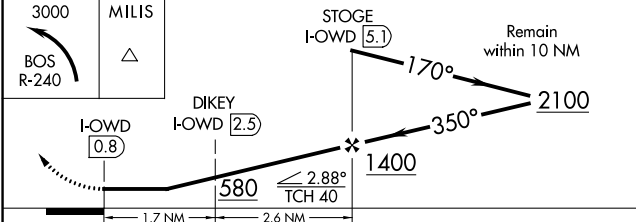
ADF or DME required.	MALSF	MISSED APPROACH: Climbing left turn to 3000 and BOS VOR/DME R-240 to MILIS INT/20.9 DME and hold, continue climb-in-hold to 3000.
<p>⚠ Helicopter visibility reduction below 3/4 SM NA. DIKEY fix minimums: For inop ALS, increase S-35 Cat C/D visibility to 1 3/8 SM. Circling NA at night.</p>		

ATIS 119.95	BOSTON APP CON 124.1 263.1	NORWOOD TOWER ★ 126.0 (CTAF) 0	GND CON 121.8	CLNC DEL 121.8
-----------------------	--------------------------------------	--	-------------------------	--------------------------

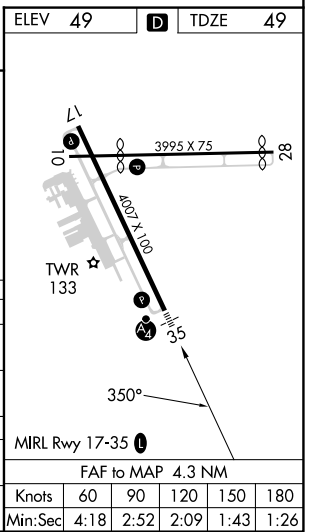


NE-1, 22 FEB 2024 to 21 MAR 2024

NE-1, 22 FEB 2024 to 21 MAR 2024



CATEGORY	A	B	C	D
S-35	580-3/4	531 (600-3/4)	580-1 1/4	531 (600-1 1/4)
C CIRCLING	600-1 551 (600-1)	700-1 651 (700-1)	1220-3	1171 (1200-3)
DIKEY FIX MINIMUMS				
S-35	500-3/4	451 (500-3/4)	500-1	451 (500-1)
C CIRCLING	600-1 551 (600-1)	700-1 651 (700-1)	1220-3	1171 (1200-3)



FAF to MAP 4.3 NM					
Knots	60	90	120	150	180
Min:Sec	4:18	2:52	2:09	1:43	1:26

WAAS CH 86400 W35A	APP CRS 350°	Rwy Idg TDZE Apt Elev	4007 49 49
--	------------------------	-----------------------------	---------------------------------------

RNAV (GPS) RWY 35

NORWOOD MEML (OWD)

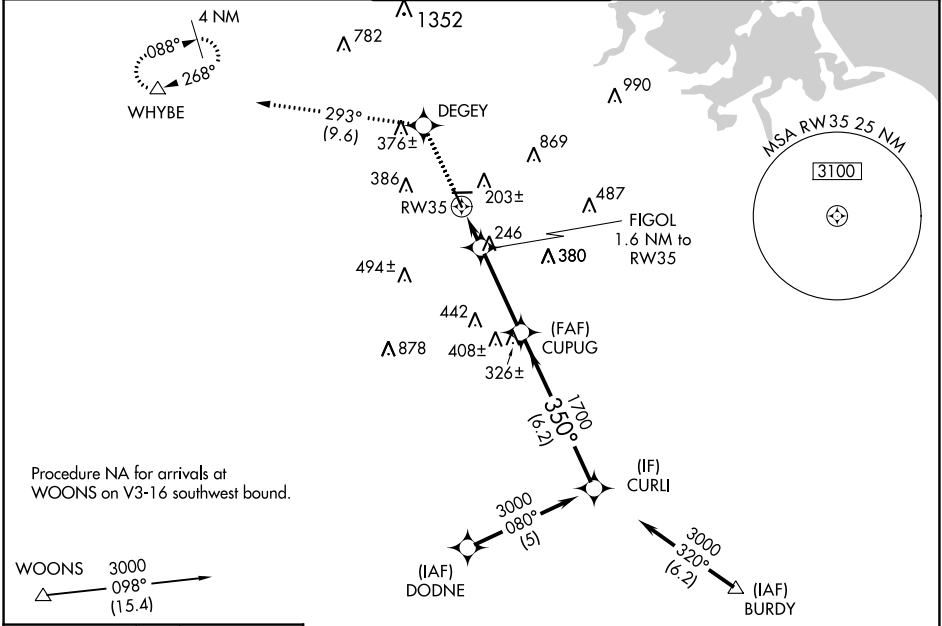
RNP APCH.

▼ **▲** Rwy 35 helicopter visibility reduction below 3/4 SM NA. For inop ALS, increase LPV all Cats visibility to 7/8 SM. For uncompensated Baro-VNAV systems, LNAV/VNAV NA below -15°C or above 48°C. Circling NA at night.

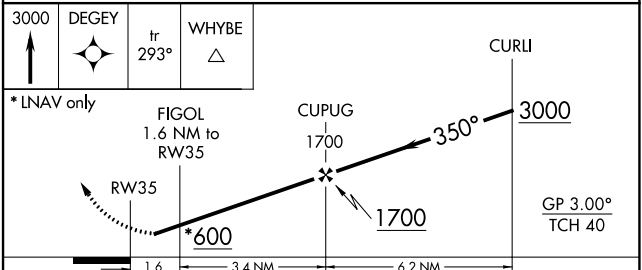
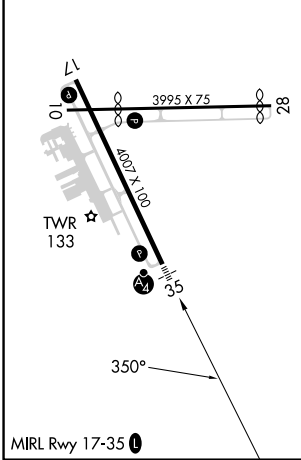


MISSED APPROACH: Climb to 3000 direct DEGEY and on track 293° to WHYBE and hold, continue climb-in-hold to 3000.

ATIS 119.95	BOSTON APP CON 124.1 263.1	NORWOOD TOWER ★ 126.0 (CTAF) 0	GND CON 121.8	CLNC DEL 121.8
-----------------------	--------------------------------------	--	-------------------------	--------------------------



ELEV 49	D	TDZE 49
---------	----------	---------



CATEGORY	A	B	C	D
LPV DA		344-3/4	295 (300-3/4)	
LNAV/VNAV DA		594-1 3/8	545 (600-1 3/8)	
LNAV MDA	580-3/4	531 (600-3/4)	580-1 1/4	531 (600-1 1/4)
C CIRCLING	600-1 551 (600-1)	700-1 651 (700-1)	1220-3	1171 (1200-3)

NE-1, 22 FEB 2024 to 21 MAR 2024

NE-1, 22 FEB 2024 to 21 MAR 2024