

WAAS CH <b>99606</b> <b>W25A</b>	APP CRS <b>249°</b>	Rwy Idg TDZE Apt Elev	<b>5350</b> <b>958</b> <b>958</b>
--	------------------------	-----------------------------	---

# RNAV (GPS) RWY 25

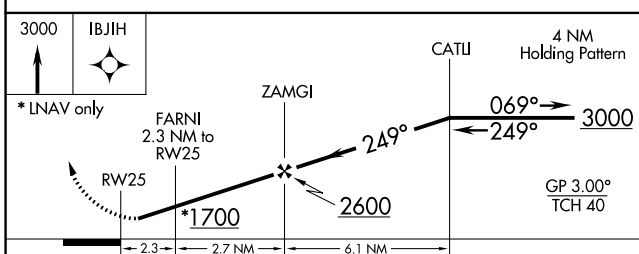
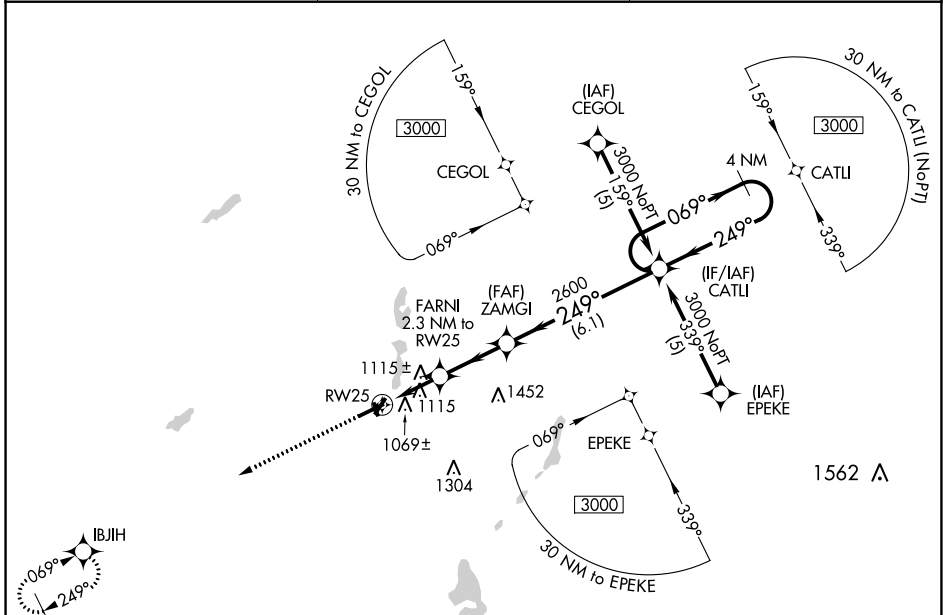
BRANCH COUNTY MEML (OEB)

RNP APCH

Rwy 25 helicopter visibility reduction below 1 SM NA. When local altimeter setting not received, use Sturgis altimeter setting and increase all DAs 48 feet and LPV visibility 1/4 mile all Cats and all MDAs 60 feet and LNAV Cat C visibility 1/4 mile. Baro-VNAV NA when using Sturgis altimeter setting. For uncompensated Baro-VNAV systems, LNAV/VNAV NA below -16°C or above 54°C. Circling NA to Rwy 16 and 34.

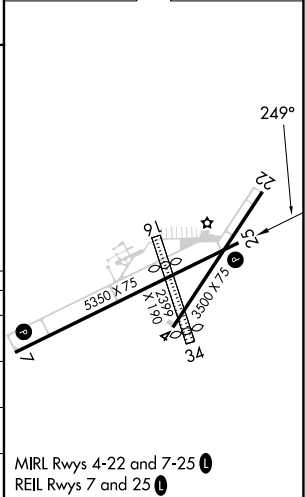
MISSED APPROACH:  
Climb to 3000 direct  
IBJIH and hold.

AWOS-3 <b>118,125</b>	GREAT LAKES APP CON * <b>121.2 239.25</b>	UNICOM <b>122.7 (CTAF) 0</b>
--------------------------	--	---------------------------------



ELEV 958	TDZE 958
----------	----------

CATEGORY	A	B	C	D
LPV DA	1305-1¼	347 (400-1¼)		NA
LNAV/VNAV DA	1423-1¾	465 (500-1¾)		NA
LNAV MDA	1420-1	462 (500-1)	1420-1¼ 462 (500-1¼)	NA
CIRCLING	1420-1 462 (500-1)	1440-1 482 (500-1)	1560-1¾ 602 (700-1¾)	NA



MIRL Rwy 4-22 and 7-25 0  
REIL Rwy 7 and 25 0

EC-1, 22 FEB 2024 to 21 MAR 2024

EC-1, 22 FEB 2024 to 21 MAR 2024

WAAS CH <b>56506</b> <b>W07A</b>	APP CRS <b>069°</b>	Rwy Idg TDZE Apt Elev	<b>5350</b> <b>958</b> <b>958</b>
--	------------------------	-----------------------------	---

# RNAV (GPS) RWY 7

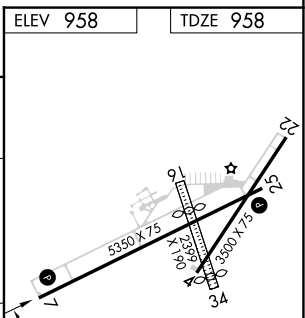
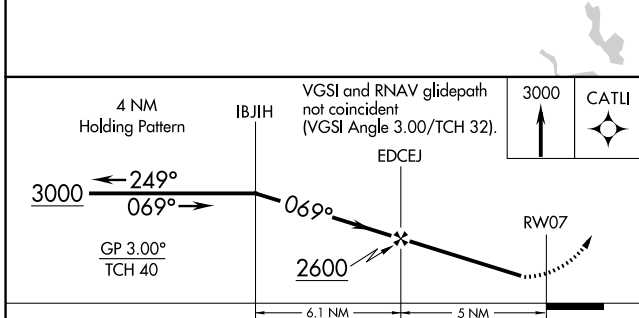
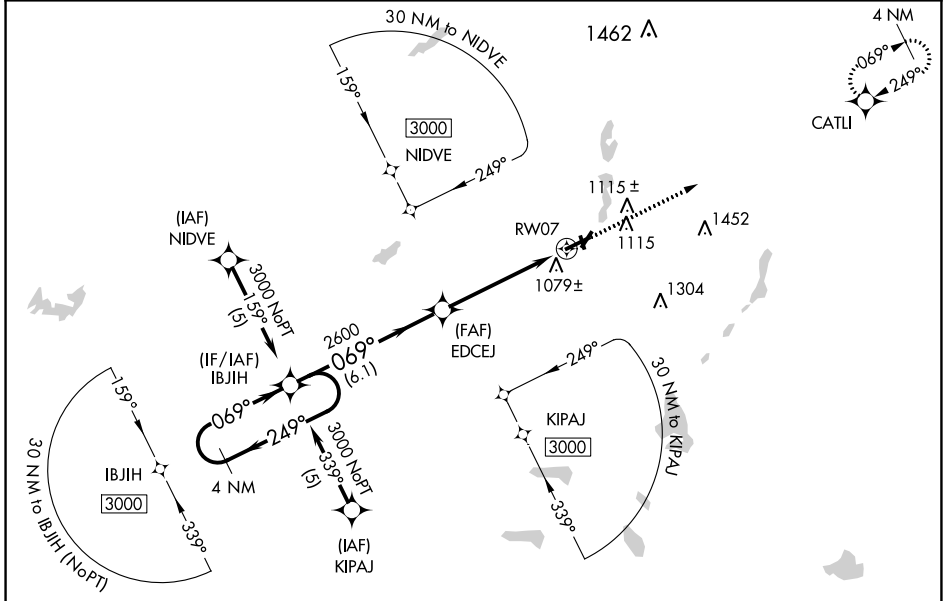
BRANCH COUNTY MEML (OEB)

RNP APCH.

**⚠** Rwy 7 helicopter visibility reduction below 3/4 SM NA. Baro-VNAV NA when using Sturgis altimeter setting. For uncompensated Baro-VNAV systems, LNAV/VNAV NA below -16°C or above 54°C. Circling NA to Rwy 16 and 34. When local altimeter setting not received, use Sturgis altimeter setting and increase all DAs 48 feet and LPV visibility 1/4 mile all Cats and all MDAs 60 feet and LNAV Cat C visibility 1/4 mile.

**MISSED APPROACH:**  
Climb to 3000 direct CATLI and hold.

AWOS-3 <b>118.125</b>	GREAT LAKES APP CON * <b>121.2 239.25</b>	UNICOM <b>122.7 (CTAF)</b>
--------------------------	--	-------------------------------



CATEGORY		A	B	C	D
LPV	DA	1306-1 1/4	348 (400-1 1/4)		NA
LNAV/VNAV	DA	1417-1 3/4	459 (500-1 3/4)		NA
LNAV	MDA	1420-1	462 (500-1)	1420-1 1/4 462 (500-1 1/4)	NA
CIRCLING		1420-1 462 (500-1)	1440-1 482 (500-1)	1560-1 3/4 602 (700-1 3/4)	NA

MIRL Rwy 4-22 and 7-25 **ⓘ**  
REIL Rwy 7 and 25 **ⓘ**

EC-1, 22 FEB 2024 to 21 MAR 2024

EC-1, 22 FEB 2024 to 21 MAR 2024