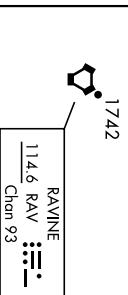


AL-6422 [USA]

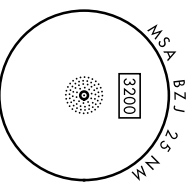
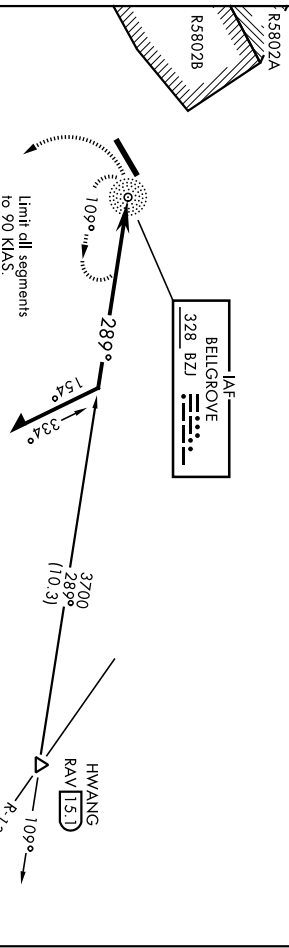
MUIR AHP (KMJ)

NDB BZJ <b>328</b>	APCH CRS <b>289°</b>	Rwy Idg N/A	TDZE N/A	Appt Elev <b>487</b>
<p>When local altimeter setting not received, use Harrisburg Intl altimeter setting.</p>				
ASOS <b>124.175</b>	HARRISBURG APP CON <b>118.25 269.45</b>	TOWER * <b>126.2</b> (CTAF) <b>0 290.325</b>	GND CON <b>135.675 269.525</b>	
<p>MISSED APPROACH: Climb to 2000 via heading 160° then climbing left turn to 2900 direct BZJ NDB and hold. Continue climb in hold.</p>				

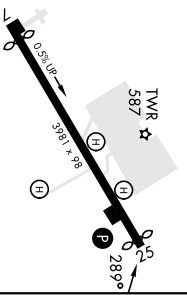
NOT FOR CIVIL USE



CAUTION: 1300 ft ridge running SW to NE 1 mile north of airport.



Remain within 5 NM.



CATEGORY H-289°	COPTER 1 480-1 1/4 993 (11000-14)	MRL Rwy 7-25 REIL all rwy's
--------------------	--------------------------------------	--------------------------------

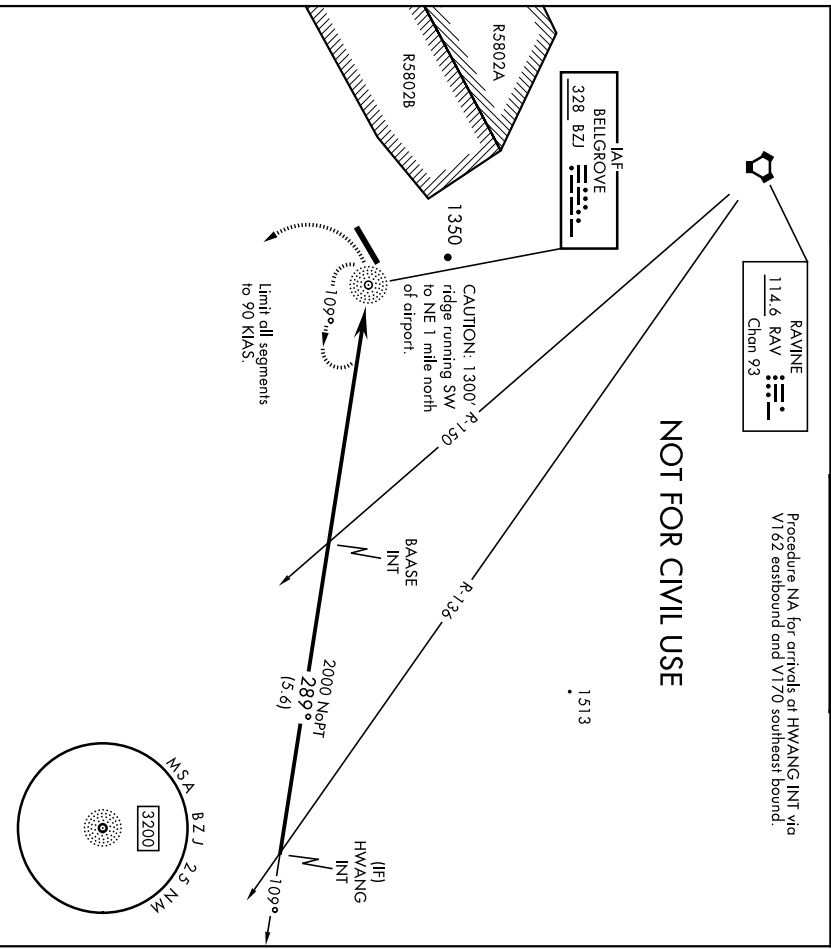
FORT INDIANTOWN GAP, PENNSYLVANIA 40°26'N-76°34'W

MUIR AHP (KMJ)

Archt 4 10AUG23

COPTER NDB Y-289 °

NDB BZL <b>328</b>	APCH CRS <b>289°</b>	Rwy Idg N/A	TDZE N/A	Appt Elev <b>487</b>	AL-64422 [USA]	MISSED APPROACH: Climb to 2000 via hdg 160° then climbing left turn to 2900 direct BZL NDB and hold. Continue climb in hold.	MUIR AHP (KMUJ)
ASOS <b>124.175</b>	HARRISBURG APP CON <b>118.25 269.45</b>	MUIR TOWER * <b>126.2 (CTAF) 290.325</b>	GND CON <b>135.675 269.525</b>				



NE-4, 22 FEB 2024 to 21 MAR 2024

NE-4, 22 FEB 2024 to 21 MAR 2024

2000	2900	BZL	HWANG INT	ELEV <b>487</b>	Rwy 7 Hdg 3631° Rwy 25 Idg 3860°
hdg 160°					
CATEGORY		COPTER		MRL Rwy 7-25 REIL all rws	
H-289°	1360-1	873	(900-1)	MUIR AHP (KMUJ)	

# COPTER RNAV (GPS) RWY 25

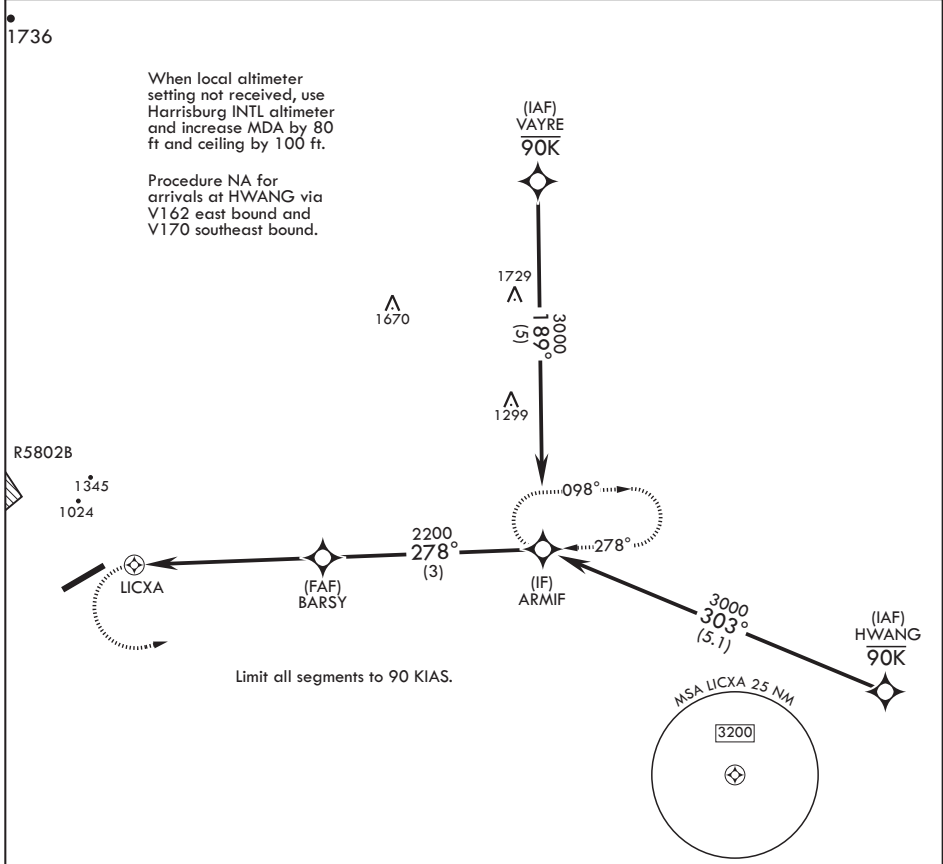
APCH CRS	Rwy Idg	3860
278°	TDZE	487
	Arpt Elev	487

AL-6422 (USA)

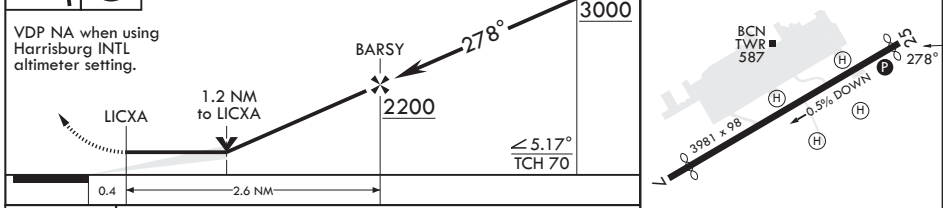
MUIR AHP (KMUI)

RNP APCH - GPS	MISSED APPROACH: Climbing left turn to 3000 direct ARMIF and hold. Continue climb in hold.
----------------	--

ASOS 124.175	HARRISBURG APP CON/DEP CON 118.25 269.45	TOWER * 126.2 (CTAF) 290.325	GND CON 135.675 269.525
-----------------	---	---------------------------------	----------------------------



3000	ARMIF	VGSI and descent angles not coincident.	ARMIF	ELEV 487	TDZE 487
------	-------	---	-------	----------	----------



CATEGORY	COPTER	
LNAV MDA	1460-1¼	973 (1000-1¼)

# COPTER RNAV (GPS) RWY 25

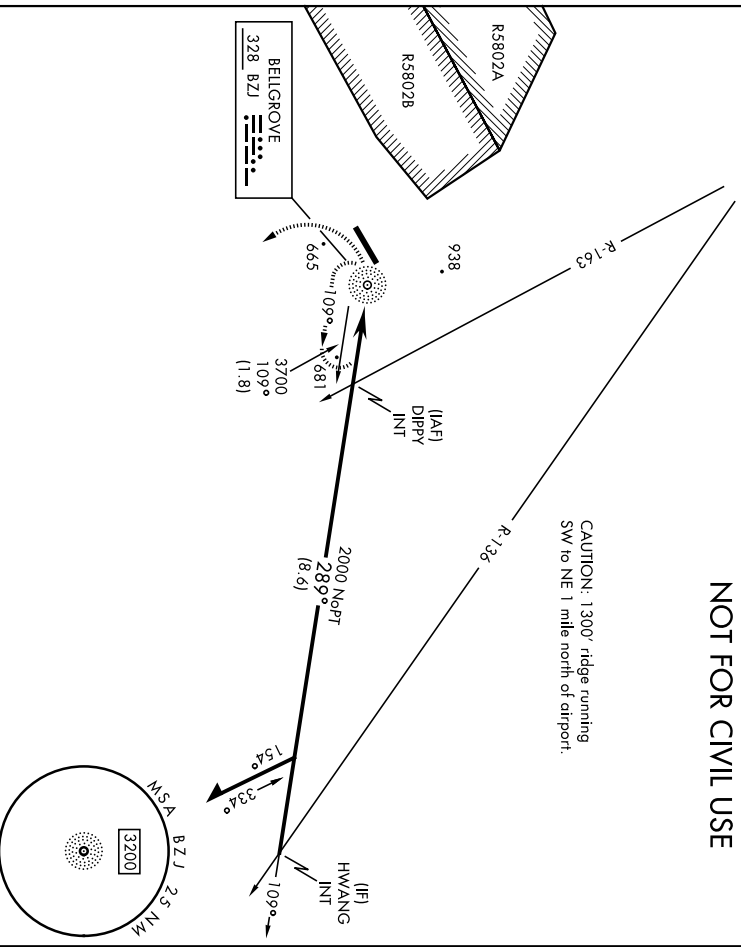
NE-4, 22 FEB 2024 to 21 MAR 2024

NE-4, 22 FEB 2024 to 21 MAR 2024

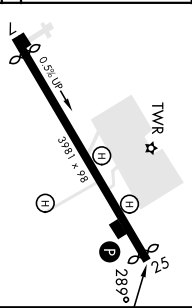
NDB BZJ <b>328</b>	APCH CRS <b>289°</b>	Rwy Idg N/A	TDE N/A	Aspl Elev <b>487</b>	AI-6422 [USA]	MUR AHP (KMUJ)
* Circling N of Rwy 7-25 not authorized. When local altimeter setting not received, use Harrisburg Intl altimeter setting.					MISSED APPROACH: Climb to 2000 via heading 160° then climbing left turn to 3000 direct BZJ NDB and hold. Continue climb-in-hold.	
ASOS <b>124.175</b>	HARRISBURG APP CON <b>118.25 269.45</b>	TOWER * <b>126.2 (CTAF) 0 290.325</b>		GND CON <b>135.675 269.525</b>		

Final approach from holding pattern at BZJ NDB not authorized; procedure turn required.

**NOT FOR CIVIL USE**



DIPPY INT R-163 3700 109°	2000 hdg 150°	3000	BZJ	ELEV 487	
Remain within 10 NM.			Rwy 7 Idg 3631' Rwy 25 Idg 3860'		
CATEGORY	A	B	C	D	
CIRCLING*	1700-1 1/4 1213 (1300-1 1/4)	1700-1 1/2 1213 (1300-1 1/2)	NOT AUTHORIZED		



FORT INDIANTOWN GAP, PENNSYLVANIA

# RNAV (GPS)-B

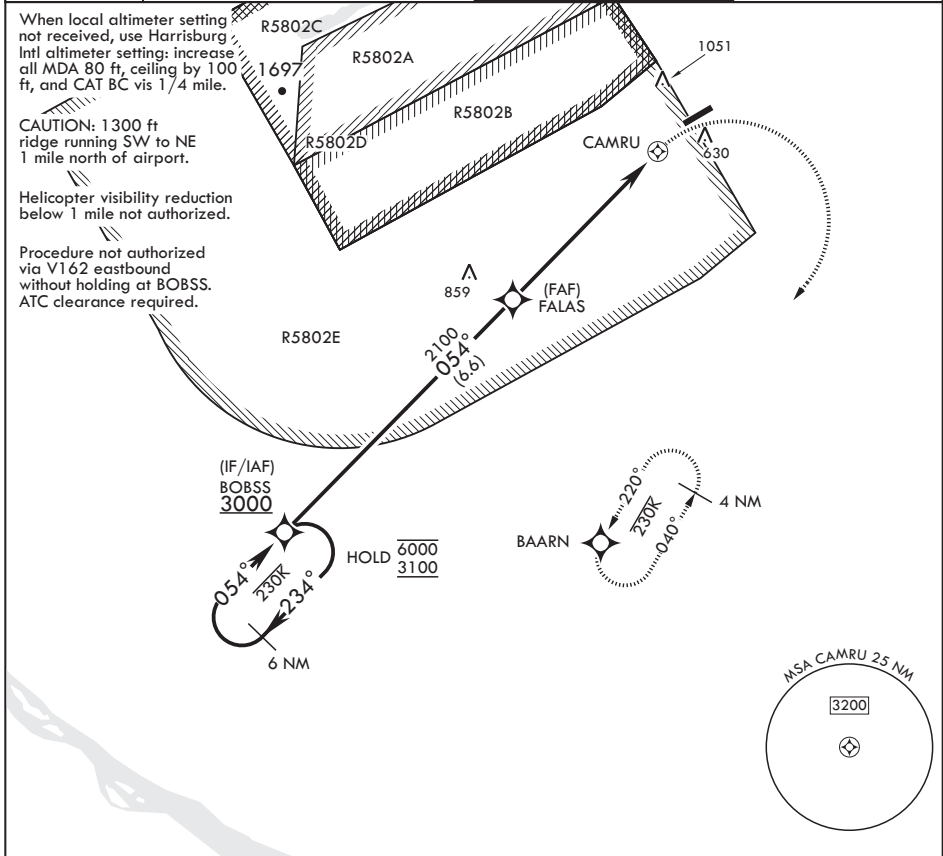
APCH CRS <b>054°</b>	Rwy ldg TDZE Arprt Elev	N/A N/A <b>487</b>
-------------------------	----------------------------	--------------------------

AL-6422 (USA)

MUIR AHP (KMUI)

RNP APCH - GPS	MISSED APPROACH: Climbing right turn to 3100 direct BAARN and hold.
<b>▼</b> Circling N of Rwy 7-25 not authorized.	

ASOS <b>124.175</b>	HARRISBURG APP CON/DEP CON <b>118.25 269.45</b>	TOWER ★ <b>126.2 (CTAF) 0 290.325</b>	GND CON <b>135.675 269.525</b>
------------------------	--	--	-----------------------------------



6 NM Holding Pattern	BOBSS	3100 BAARN	ELEV 487	
6000 3100	234° 054°	3100 BAARN	Rwy 7 ldg 3631' Rwy 25 ldg 3860'	
3000	FALAS	2100 CAMRU	BCN TWR 587	
		4.2 NM	0.5% UP 3981 x 98	
CATEGORY	A	B	C	D
<b>C</b> CIRCLING	1420-1¼	933 (1000-1¼)	1420-2¾ 933 (1000-2¾)	NA

FORT INDIANTOWN GAP, PENNSYLVANIA

40°26'N - 76°34'W

MUIR AHP (KMUI)

Amdt 3 10AUG23

# RNAV (GPS)-B

NE-4, 22 FEB 2024 to 21 MAR 2024

NE-4, 22 FEB 2024 to 21 MAR 2024

MIRL all Rwys  
REIL all Rwys