

23278

MUIR AHP (KMUI)

MUIR THREE DEPARTURE (COPTER) (MUJ3 • MUJ)

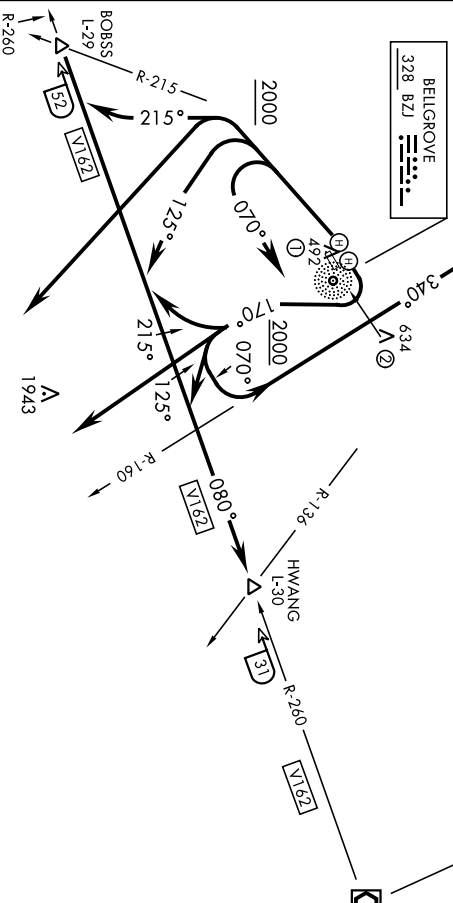
FORT INDIANTOWN GAP, PENNSYLVANIA

AL-6422 (USA)

GND CON
135.675 269.525
TOWER ★
126.2 (CTAF) 290.325
HARRISBURG DEP CON
118.25 269.45

1811
RAVINE
114.6 RAV
Chon 93

EAST TEXAS
110.2 ETX
Chon 39



CAUTION:
1 300' ridge running SW to NE
1 mile NE Rwy 7-25.

- ① Located on orpi SW end of Rwy 25
- ② Located ¼ mile NE of Rwy 7

NOTE: Chart not to scale

DEPARTURE ROUTE DESCRIPTION

DEPARTURE EAST PAD. Fly heading 070° with climbing right turn as soon as practicable to 2000 via 170° bearing from BZJ NDB. Thence via (transition) or (assigned route) to 3000. Expect clearance to assigned altitude ten minutes after departure.

DEPARTURE WEST PAD. Fly heading 240° to 2000. Thence via (transition) or (assigned route) to 3000. Expect clearance to assigned altitude ten minutes after departure.

BOBSS TRANSITION (MUJ3 BOBSS): Fly heading 215° to intercept V1 62 to BOBSS INTERSECTION.

HWANG TRANSITION (MUJ3 HWANG): Fly heading 125° to intercept V1 62 to HWANG INTERSECTION.

LANCASTER TRANSITION (MUJ3 LRP): Proceed direct to LRP VORTAC.

RAVINE TRANSITION (MUJ3 RAV): Turn left heading 070° to intercept the RAV R-160. Thence via RAV R-160 to RAVINE VORTAC.

MUIR THREE DEPARTURE (COPTER) (MUJ3 • MUJ)

Amtr 3 25FEB21

FORT INDIANTOWN GAP, PENNSYLVANIA
MUIR AHP (KMUI)