

WAAS CH 48911 W13A	APP CRS 128°	Rwy Idg TDZE Apt Elev	4500 1885 1915
--	------------------------	-----------------------------	---

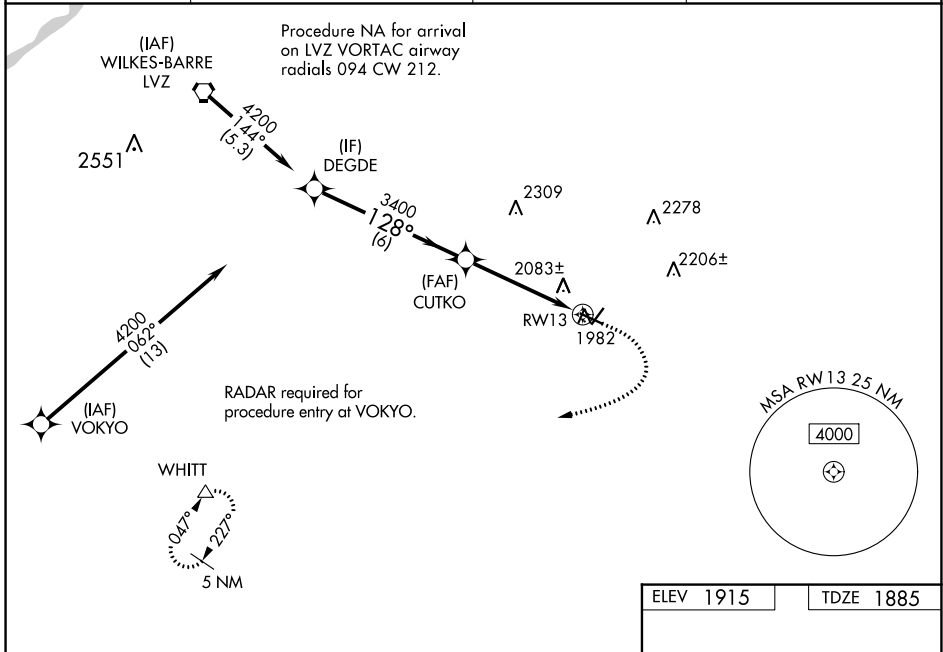
RNAV (GPS) RWY 13

POCONO MOUNTAINS RGNL (MPO)

▼ For uncompensated Baro-VNAV systems, LNAV/VNAV NA below -18° C (0° F) or above 54° C (130° F).
▲ Baro-VNAV and VDP NA when using Wilkes-Barre/Scranton altimeter setting. Rwy 13 helicopter visibility reduction below 3/4 SM NA. DME/DME RNP-0.3 NA. When local altimeter setting not received, use Wilkes-Barre/Scranton altimeter setting: increase LPV DA to 2450 feet, LNAV/VNAV DA to 2537 feet and all visibilities 1/2 SM; increase all MDAs 180 feet and visibility LNAV Cat C/D 3/8 SM and Circling Cat C/D 1/2 SM. Circling Rwy 23 NA at night.

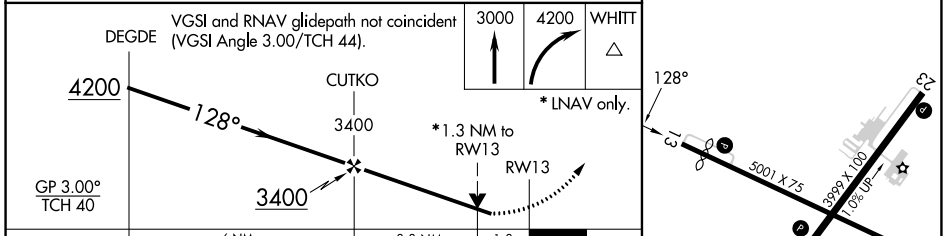
MISSED APPROACH: Climb to 3000 then climbing right turn to 4200 direct WHITT and hold.

ASOS 120.275	WILKES-BARRE APP CON 126.3 256.7	CLNC DEL 125.3	UNICOM 122.7 (CTAF) 0
------------------------	--	--------------------------	---------------------------------



NE-4, 22 FEB 2024 to 21 MAR 2024

NE-4, 22 FEB 2024 to 21 MAR 2024



CATEGORY	A	B	C	D
LPV DA		2271-1¼	386 (400-1¼)	
LNAV/VNAV DA		2358-1½	473 (500-1½)	
LNAV MDA	2340-1	455 (500-1)	2340-1¾	455 (500-1¾)
C CIRCLING	2420-1 505 (600-1)	2500-1 585 (600-1)	2600-2 685 (700-2)	2660-2½ 745 (800-2½)

ELEV 1915	TDZE 1885
-----------	-----------

REIL Rwy 5, 13, 23, and 31 0
MIRL Rwy 5-23 and 13-31 0

WAAS CH 58016 W31A	APP CRS 308°	Rwy Idg TDZE Apt Elev	5001 1885 1915
--	------------------------	-----------------------------	---

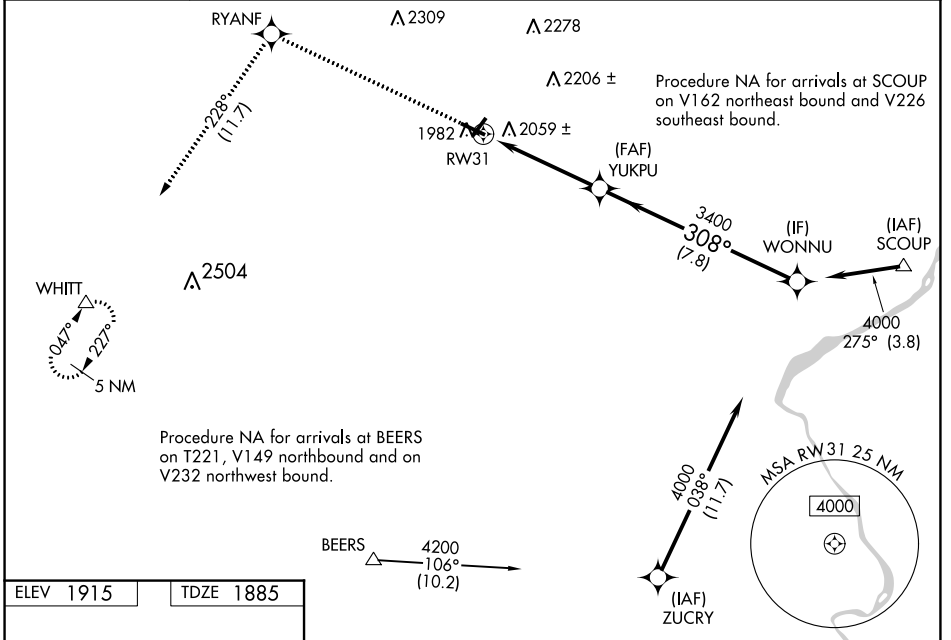
RNAV (GPS) RWY 31

POCONO MOUNTAINS RGNL (MPO)

⚠ Baro-VNAV NA when using Wilkes-Barre/Scranton altimeter setting. For uncompensated Baro-VNAV systems, LNAV/VNAV NA below -18°C (0°F) or above 54°C (130°F).
⚠ Rwy 31 helicopter visibility reduction below ¾ SM NA. DME/DME RNP-0.3 NA.
 When local altimeter setting not received, use Wilkes-Barre/Scranton altimeter setting: increase LPV DA to 2403 feet and visibility ¼ SM, LNAV/VNAV DA to 2446 feet and visibility ¾ SM; increase all MDAs 180 feet and visibility LNAV Cat C/D ¾ SM and Circling Cat C/D ½ SM. Circling Rwy 23 NA at night.

MISSED APPROACH: Climb to 4200 direct RYANF and on track 228° to WHITT and hold.

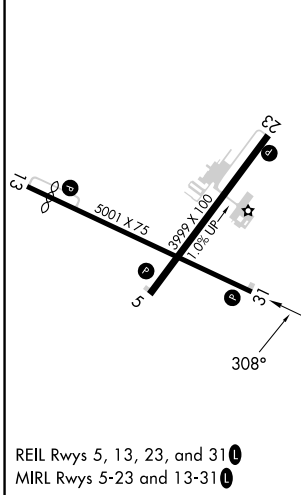
ASOS 120.275	WILKES-BARRE APP CON 126.3 256.7	CLNC DEL 125.3	UNICOM 122.7 (CTAF) 0
------------------------	--	--------------------------	---------------------------------



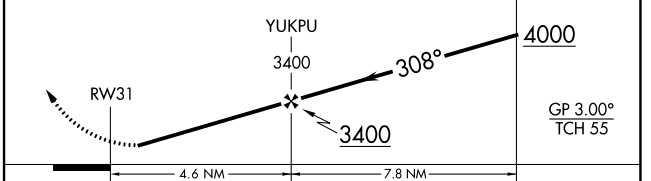
NE-4, 22 FEB 2024 to 21 MAR 2024

NE-4, 22 FEB 2024 to 21 MAR 2024

ELEV 1915	TDZE 1885
------------------	------------------



4200	RYANF	WHITT	VGSI and RNAV glidepath not coincident (VGSI Angle 3.50/TCH 40).
↑	✧	tr 228°	



CATEGORY	A	B	C	D
LPV DA		2224-1½	339 (400-1½)	
LNAV/VNAV DA		2267-1¼	382 (400-1¼)	
LNAV MDA	2320-1	435 (500-1)	2320-1¾	435 (500-1¾)
C CIRCLING	2420-1 505 (600-1)	2500-1 585 (600-1)	2600-2 685 (700-2)	2660-2½ 745 (800-2½)

WAAS CH 50311 W05A	APP CRS 050°	Rwy Idg TDZE Apt Elev	3999 1906 1915
--	------------------------	-----------------------------	---

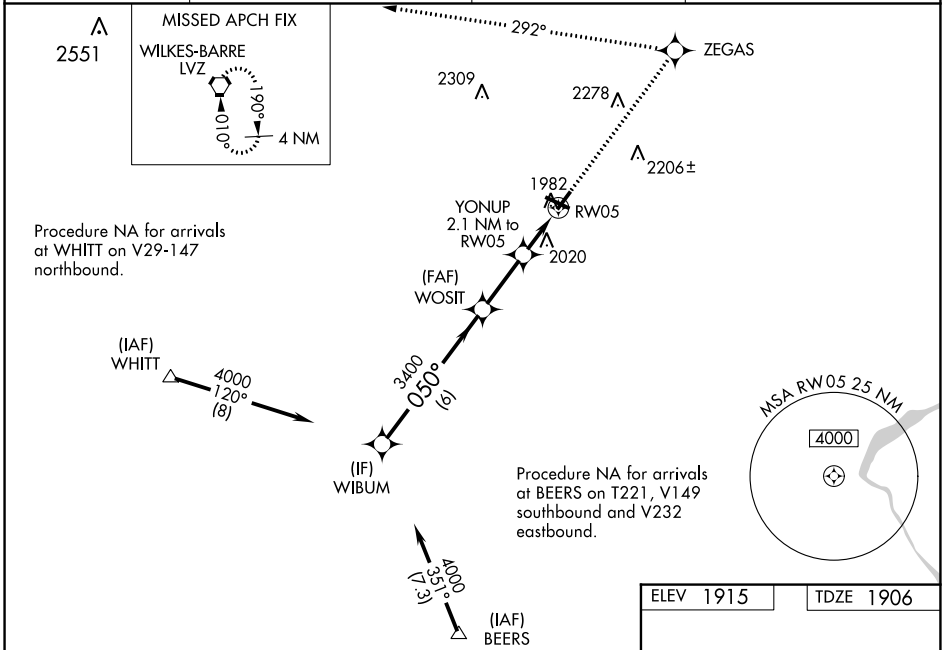
RNAV (GPS) RWY 5

POCONO MOUNTAINS RGNL (MPO)

⚠ Baro-VNAV NA when using Wilkes-Barre/Scranton altimeter setting. For unconsented Baro-VNAV systems, LNAV/VNAV NA below -18°C (0°F) or above 45°C (113°F).
⚠ DME/DME RNP-0.3 NA. Rwy 5 helicopter visibility reduction below 3/4 SM NA. When local altimeter setting not received, use Wilkes-Barre/Scranton altimeter setting: increase LPV DA to 2339 feet, LNAV/VNAV DA to 2431 feet and all visibilities 1/4 SM; increase all MDAs 180 feet and visibility Cat C and D 1/2 SM. Circling Rwy 23 NA at night.

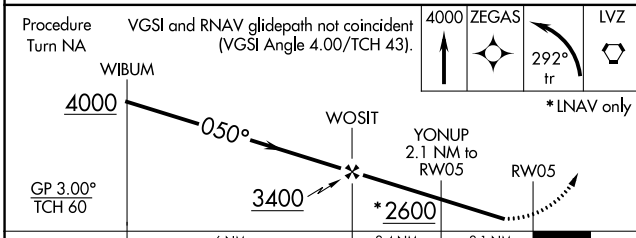
MISSED APPROACH:
 Climb to 4000 direct ZEGAS and left turn via 292° track to LVZ VORTAC and hold.

ASOS 120.275	WILKES-BARRE APP CON 126.3 256.7	CLNC DEL 125.3	UNICOM 122.7 (CTAF)
------------------------	--	--------------------------	-------------------------------



NE-4, 22 FEB 2024 to 21 MAR 2024

NE-4, 22 FEB 2024 to 21 MAR 2024



ELEV 1915	TDZE 1906
-----------	-----------

REIL Rws 5, 13, 23, and 31
 MIRL Rws 5-23 and 13-31

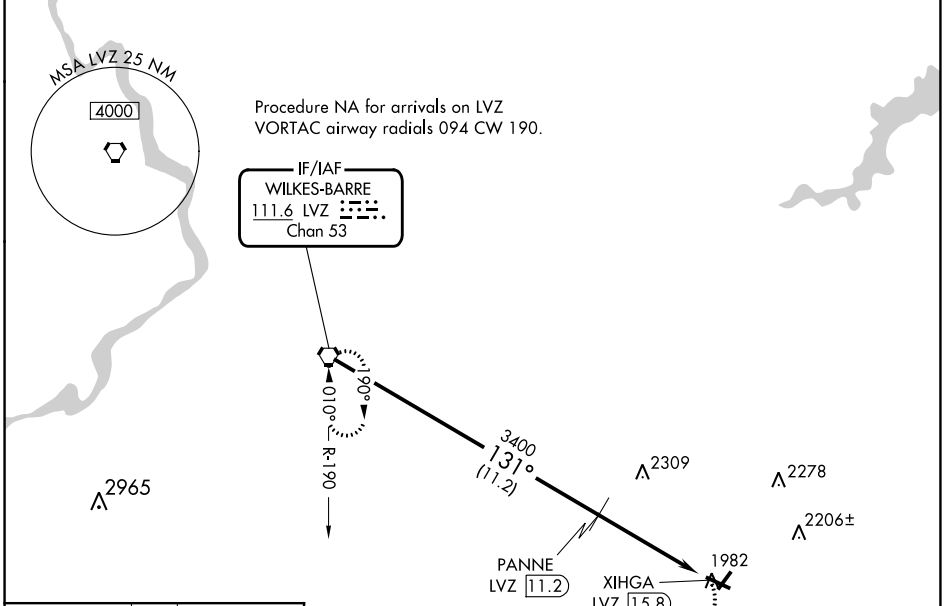
CATEGORY	A	B	C	D
LPV DA	2160-1		254 (300-1)	
LNAV/VNAV DA	2252-1 1/4		346 (400-1 1/4)	
LNAV MDA	2320-1	414 (500-1)	2320-1 1/4	414 (500-1 1/4)
C CIRCLING	2480-1 565 (600-1)	2500-1 585 (600-1)	2600-2 685 (700-2)	2660-2 1/2 745 (800-2 1/2)

VORTAC LVZ 111.6 Chan 53	APP CRS 131°	Rwy Idg TDZE Apt Elev	4500 1885 1915
--	------------------------	-----------------------------	---

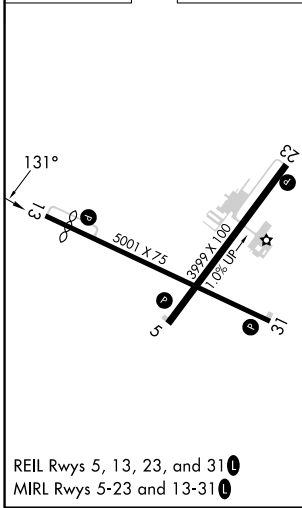
VOR/DME RWY 13

POCONO MOUNTAINS RGNL (MPO)

<p>▼ Circling Rwy 23 NA at night. Helicopter visibility reduction below 3/4 SM NA. When local altimeter setting not received, use Wilkes-Barre/Scranton altimeter setting and increase all MDA 180 feet; increase S-13 Cat B and Circling Cat B visibility 1/4 mile, S-13 Cats C/D visibility 3/4 mile, and Circling Cats C/D visibility 1/2 mile.</p> <p>▲ MISSED APPROACH: Climbing right turn to 4000 direct LVZ VORTAC and hold.</p>			
ASOS 120.275	WILKES-BARRE APP CON 126.3 256.7	CLNC DEL 125.3	UNICOM 122.7 (CTAF) 0



ELEV 1915	TDZE 1885
-----------	-----------



LVZ VORTAC	4000		LVZ	
	131°		4000	
PANNE LVZ 11.2		XIHGA LVZ 15.8		
3400		3.03°		TCH 40
11.2 NM		4.6 NM		
CATEGORY	A	B	C	D
S-13	2500-1	615 (600-1)	2500-1 3/4	615 (600-1 3/4)
CIRCLING	2500-1	585 (600-1)	2600-2	2660-2 1/2
			685 (700-2)	745 (800-2 1/2)

NE-4, 22 FEB 2024 to 21 MAR 2024

NE-4, 22 FEB 2024 to 21 MAR 2024