

# SHFTY FIVE ARRIVAL (RNAV)

FORT MYERS, FLORIDA

## ARRIVAL ROUTE DESCRIPTION

CYNTA TRANSITION (CYNTA.SHFTY5)  
HIBAC TRANSITION (HIBAC.SHFTY5)

From SHFTY on track 183° to WRTRS, then on track 161° to MAZZY, then on track 161° to MOEMO, then on track 160° to LBV VORTAC, thence....

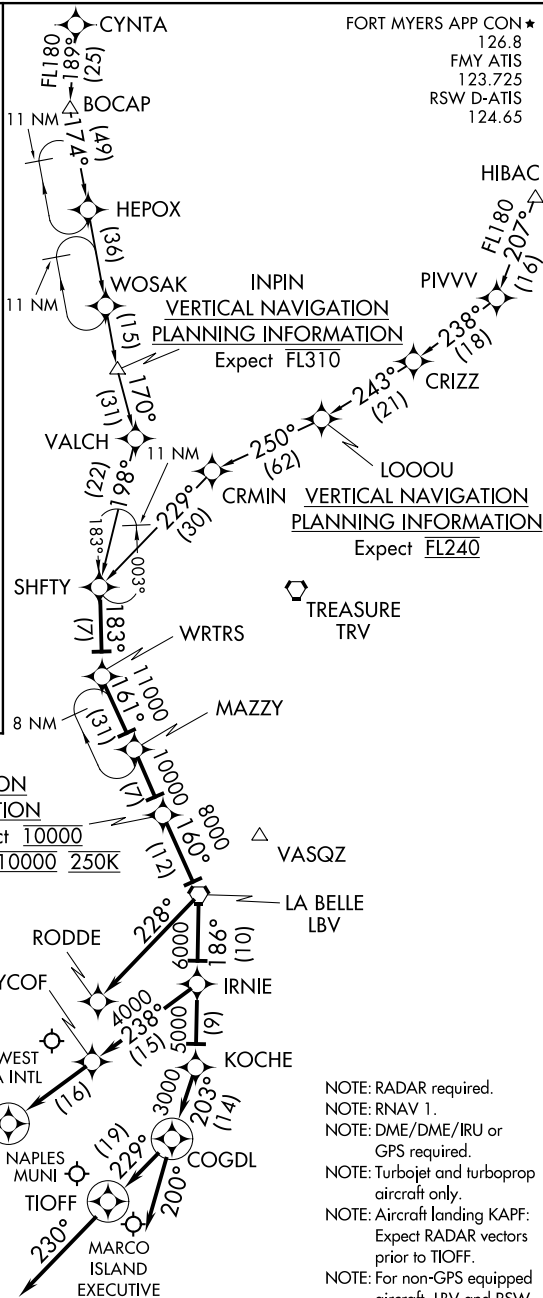
....Landing KRSW Rwy 6 and KFMY: From LBV VORTAC on track 186° to IRNIE, then on track 238° to WYCOF, then on track 238° to PONTY, then on heading 240° or as assigned by ATC. Expect RADAR vectors to final approach course.

....Landing KRSW Rwy 24: From LBV VORTAC on heading 228°. Expect RADAR vectors to final approach course.

....Landing KAPF: From LBV VORTAC on track 186° to IRNIE, then on track 186° to KOCHE, then on track 203° to COGDL, then on heading 229° to TIOFF, then on heading 230°. Expect RADAR vectors to final approach course.

....Landing KMKY: From LBV VORTAC on track 186° to IRNIE, then on track 186° to KOCHE, then on track 203° to COGDL, then on heading 200°. Expect RADAR vectors to final approach course.

FORT MYERS APP CON★  
126.8  
FMY ATIS  
123.725  
RSW D-ATIS  
124.65



MOEMO  
VERTICAL NAVIGATION  
PLANNING INFORMATION  
KRSW Landing Rwy 6 Expect 10000  
KRSW Landing Rwy 24 Expect 10000 250K

PONTY  
VERTICAL NAVIGATION  
PLANNING INFORMATION  
Expect 4000

- NOTE: RADAR required.
- NOTE: RNAV 1.
- NOTE: DME/DME/IRU or GPS required.
- NOTE: Turbojet and turboprop aircraft only.
- NOTE: Aircraft landing KAPF: Expect RADAR vectors prior to TIOFF.
- NOTE: For non-GPS equipped aircraft, LBV and RSW must be operational.

NOTE: Chart not to scale.

# SHFTY FIVE ARRIVAL (RNAV)

FORT MYERS, FLORIDA

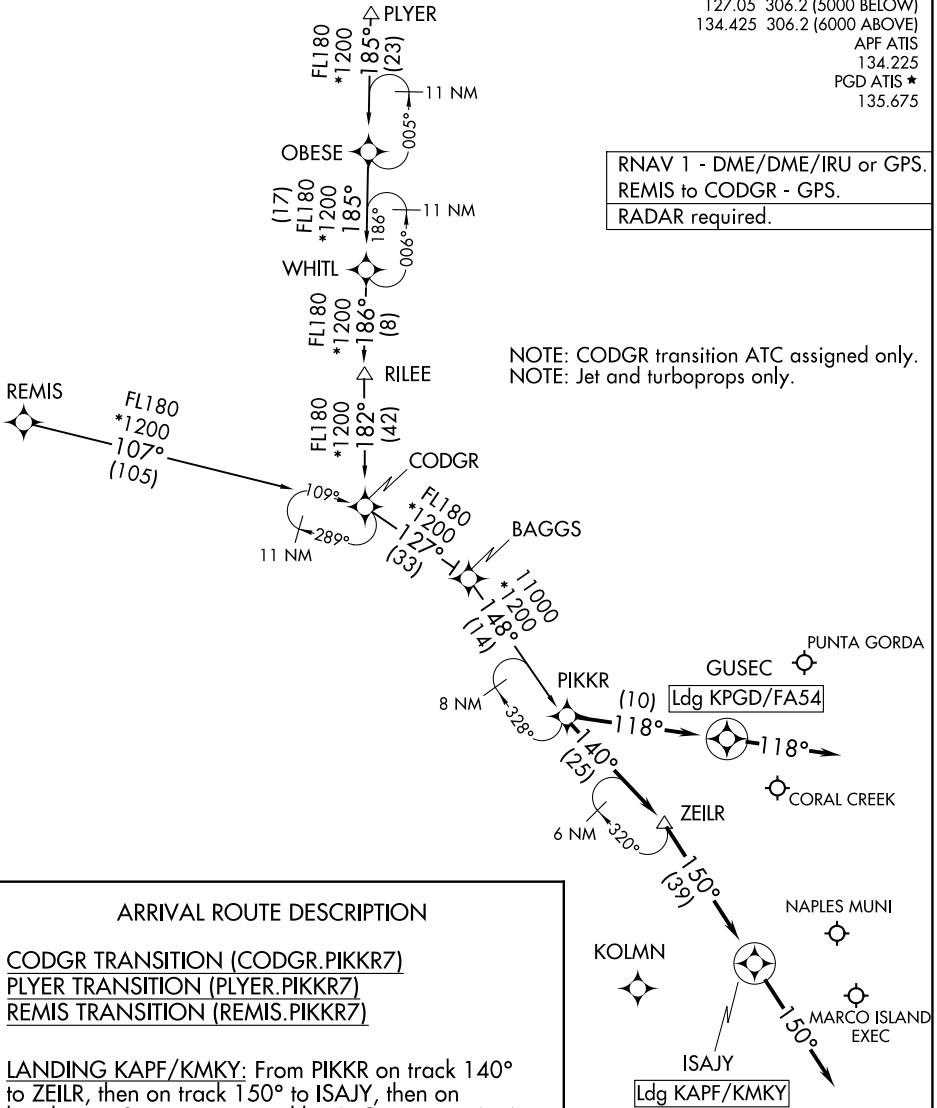
SE-3, 27 JAN 2022 to 24 FEB 2022

SE-3, 27 JAN 2022 to 24 FEB 2022

FORT MYERS APP CON ★  
 127.05 306.2 (5000 BELOW)  
 134.425 306.2 (6000 ABOVE)  
 APF ATIS 134.225  
 PGD ATIS ★ 135.675

RNAV 1 - DME/DME/IRU or GPS.  
 REMIS to CODGR - GPS.  
 RADAR required.

NOTE: CODGR transition ATC assigned only.  
 NOTE: Jet and turboprops only.



SE-3, 27 JAN 2022 to 24 FEB 2022

SE-3, 27 JAN 2022 to 24 FEB 2022

ARRIVAL ROUTE DESCRIPTION

- CODGR TRANSITION (CODGR.PIKKR7)
- PLYER TRANSITION (PLYER.PIKKR7)
- REMIS TRANSITION (REMIS.PIKKR7)

LANDING KAPF/KMKY: From PIKKR on track 140° to ZEILR, then on track 150° to ISAJY, then on heading 150° or as assigned by ATC. Expect RADAR vectors to final approach course.

LANDING KPGD/FA54: From PIKKR on track 118° to GUSEC, then on heading 118° or as assigned by ATC. Expect RADAR vectors to final approach course.

NOTE: Chart not to scale.

FORT MYERS APP CON \*  
134.425 306.2  
APF ATIS  
134.225

TAYLOR  
112.9 TAY  
Chan 76

ST PETERSBURG  
116.4 PIE  
Chan 111  
N27°54.47' - W82°41.06'  
L-21-24, H-8

TEPEE  
N28°00.02'  
W82°21.99'  
H-8

NOTE: TEPEE TRANSITION  
NA for turbojet aircraft,  
file for PIE TRANSITION.

SARASOTA  
117.0 SRQ  
Chan 117  
N27°24.42' - W82°33.82'

LA BELLE  
110.4 LBV  
Chan 41

ZEILR  
N26°38.22' - W82°22.46'  
TURBOJET VERTICAL NAVIGATION  
PLANNING INFORMATION  
Expect 11000

NOTE: RADAR required.

NOTE: Chart not to scale.

NAPLES MUNI

MARCO ISLAND EXEC

ARRIVAL ROUTE DESCRIPTION

ST PETERSBURG TRANSITION (PIE.ZEILR5): From over PIE VORTAC on SRQ R-353 to SRQ VOR/DME. Thence. . . .

TEPEE TRANSITION (TEPEE.ZEILR5): From over TEPEE INT on SRQ R-021 to SRQ VOR/DME. Thence. . . .

. . . .From over SRQ VOR/DME on SRQ R-173 to ZEILR, then heading 150°. Expect RADAR vectors to final approach course.

SE-3, 27 JAN 2022 to 24 FEB 2022

SE-3, 27 JAN 2022 to 24 FEB 2022