

LOC/DME I-MHR 111.35 Chan 50(Y)	APP CRS 221°	Rwy Idg 11301 TDZE 98 Apt Elev 98
--	------------------------	--

ILS Y or LOC Y RWY 22L

SACRAMENTO MATHER (MHR)

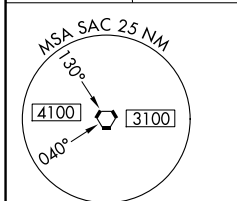
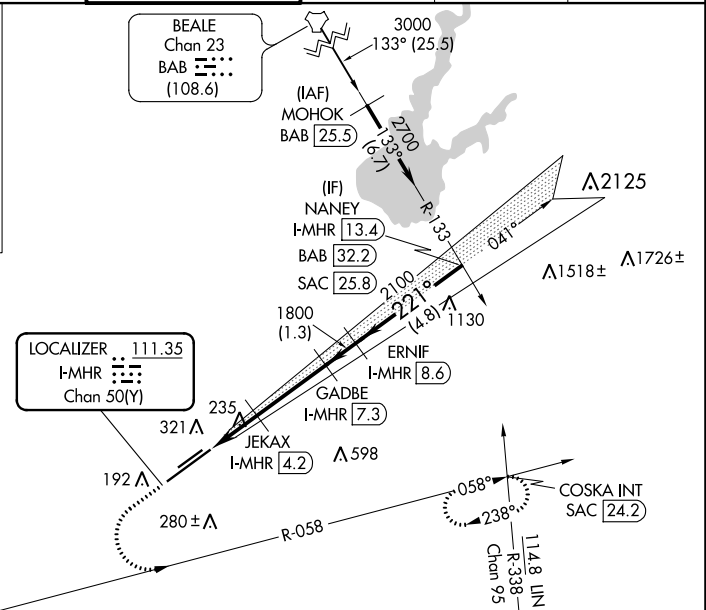
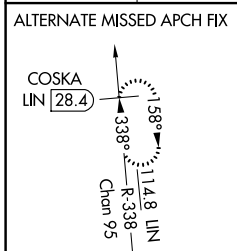
TACAN required for procedure entry at BAB TACAN. For non-TACAN equipped aircraft, DME required.

⚠ Circling NA northwest of Rwy 4R-22L. For inop ALS, increase S-ILS Cat E visibility to RVR 4000 and S-LOC Cat C/D/E visibility to RVR 6000.
*RVR 1800 authorized with use of FD or AP or HUD to DA. (NA when using Sacramento Exec altimeter setting).

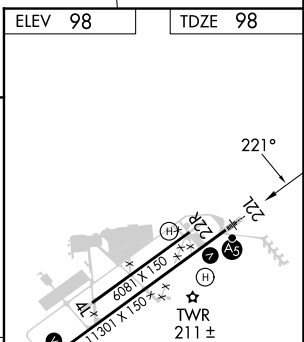
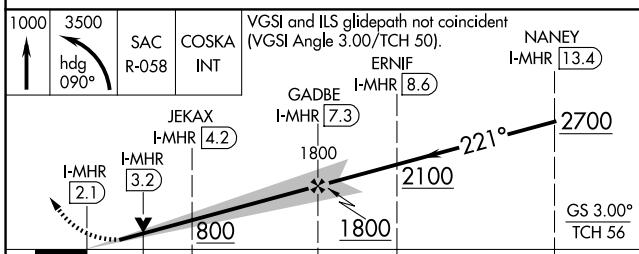
MALS R

MISSED APPROACH: Climb to 1000, then climbing left turn to 3500 on heading 090° and SAC VORTAC R-058 to COSKA INT/SAC 24.2 DME and hold, continue climb-in-hold to 3500.

ATIS 118.325	NORCAL APP CON 127.4 317.5	MATHER TOWER ★ 120.65 (CTAF) 0 282.25	GND CON 121.85 307.9	CLNC DEL 121.85 307.9	UNICOM 122.95
------------------------	--------------------------------------	---	--------------------------------	---------------------------------	-------------------------



ELEV 98	TDZE 98
---------	---------



CATEGORY	A	B	C	D	E
S-ILS 22L	298/24		200 (200-½)		
S-LOC 22L	500/24	402 (500-½)	500/40 402 (500-¾)		
CIRCLING	560-1	462 (500-1)	600-1½ 502 (600-1½)	800-2¼ 702 (800-2¼)	800-2½ 702 (800-2½)

MIRL Rwy 4L-22R

HIRL Rwy 4R-22L

SW-2, 22 FEB 2024 to 21 MAR 2024

SW-2, 22 FEB 2024 to 21 MAR 2024

LOC/DME I-MHR 111.35 Chan 50(Y)	APP CRS 221°	Rwy Idg TDZE Apt Elev	11301 98 98
--	------------------------	-----------------------------	--

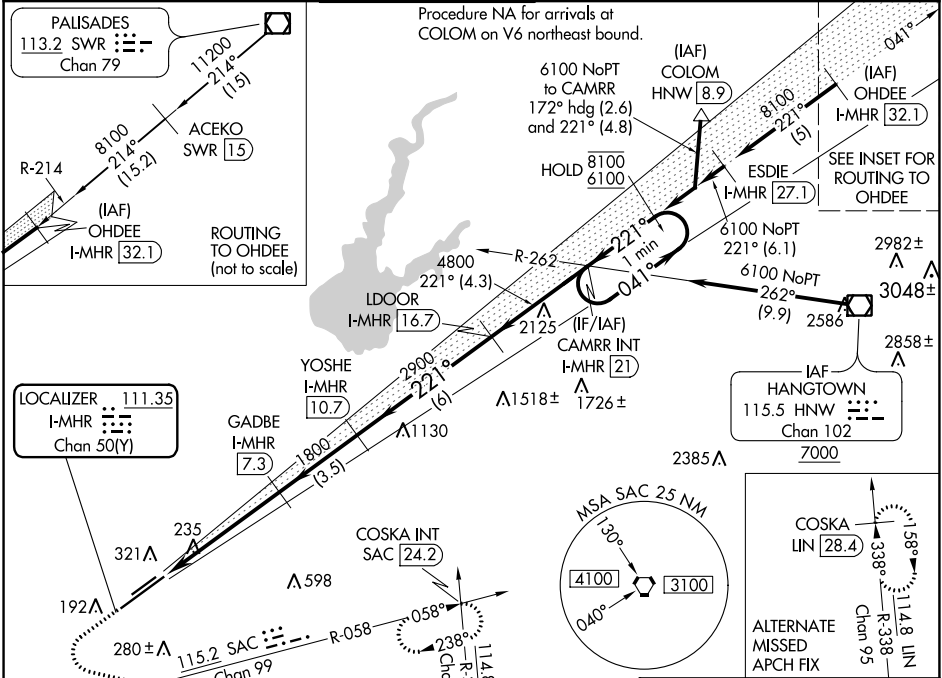
ILS Z RWY 22L (SA CAT I & II)

SACRAMENTO MATHER (MHR)

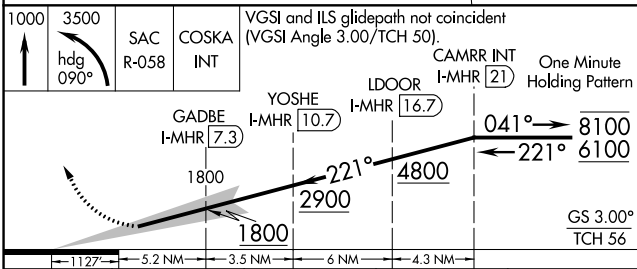
Requires specific OPSPEC, MSPEC, or LOA approval.
Procedure NA when tower closed.

MALSR
MISSED APPROACH: Climb to 1000, then climbing left turn to 3500 on heading 090° and SAC VORTAC R-058 to COSKA INT/SAC 24.2 DME and hold, continue climb-in-hold to 3500.

ATIS 118.325	NORCAL APP CON 127.4 317.5	MATHER TOWER ★ 120.65 (CTAF) 282.25	GND CON 121.85 307.9	CLNC DEL 121.85 307.9	UNICOM 122.95
------------------------	--------------------------------------	---	--------------------------------	---------------------------------	-------------------------

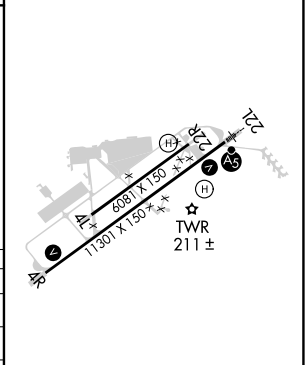


ELEV 98	TDZE 98
---------	---------



CATEGORY	A	B	C	D
S-ILS 22L	SA CAT I	RA 136/14	150	DA 248
S-ILS 22L	SA CAT II	RA 95/12	100	DA 198

SA CATEGORY I & II ILS - SPECIAL AIRCREW & AIRCRAFT CERTIFICATION REQUIRED



MIRL Rwy 4L-22R
HIRL Rwy 4R-22L

SW-2, 22 FEB 2024 to 21 MAR 2024

SW-2, 22 FEB 2024 to 21 MAR 2024

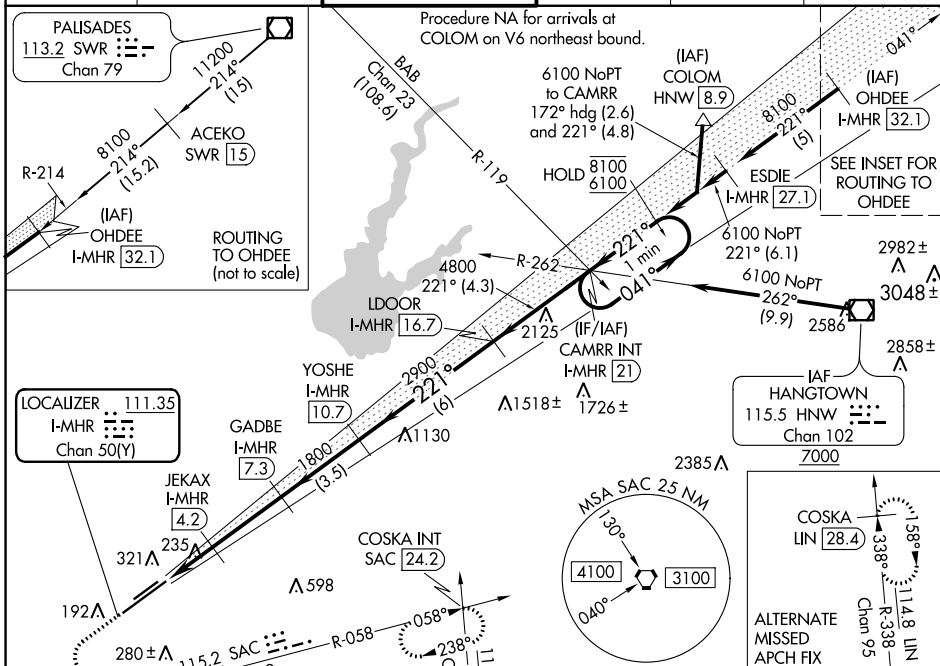
LOC/DME I-MHR 111.35 Chan 50(Y)	APP CRS 221°	Rwy Idg TDZE Apt Elev	11301 98 98
--	------------------------	-----------------------------	--

ILS Z or LOC Z RWY 22L

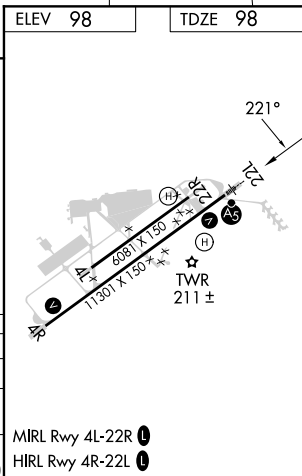
SACRAMENTO MATHER (MHR)

DME required for LOC only.	MALSR	MISSED APPROACH: Climb to 1000, then climbing left turn to 3500 on heading 090° and SAC VORTAC R-058 to COSKA INT/ SAC 24.2 DME and hold, continue climb-in-hold to 3500.
<p>▼ For inop ALS, increase S-ILS Cat E visibility to RVR 4000 and S-LOC Cat C/D/E visibility to RVR 6000. Circling NA northwest of Rwy 4R-22L.</p> <p>*RVR 1800 authorized with use of FD or AP or HUD to DA (NA when using Sacramento Exec altimeter setting).</p>		

ATIS 118.325	NORCAL APP CON 127.4 317.5	MATHER TOWER * 120.65 (CTAF) 282.25	GND CON 121.85 307.9	CLNC DEL 121.85 307.9	UNICOM 122.95
------------------------	--------------------------------------	---	--------------------------------	---------------------------------	-------------------------



ELEV 98	TDZE 98
<p>1000 3500</p> <p>hdg 090°</p> <p>SAC R-058</p> <p>COSKA INT</p> <p>One Minute Holding Pattern</p>	<p>YOSHE I-MHR 10.7</p> <p>LDOOR I-MHR 16.7</p> <p>CAMRR INT I-MHR 21</p> <p>8100 041°</p> <p>8100 221°</p> <p>6100</p> <p>GS 3.00°</p> <p>TCH 56</p>
<p>JEKAX I-MHR 4.2</p> <p>GADBE I-MHR 7.3</p> <p>1800</p> <p>800 1800</p> <p>2900</p> <p>4800</p> <p>221°</p>	<p>1.1 1 NM</p> <p>3.1 NM</p> <p>3.5 NM</p> <p>6 NM</p> <p>4.3 NM</p>
CATEGORY	A B C D E
S-ILS 22L*	298/24 200 (200-½)
S-LOC 22L	500/24 402 (500-½) 500/40 402 (500-¾)
CIRCLING	560-1 462 (500-1) 600-1½ 800-2¼ 800-2½ 502 (600-1½) 702 (800-2¼) 702 (800-2½)



SW-2, 22 FEB 2024 to 21 MAR 2024

SW-2, 22 FEB 2024 to 21 MAR 2024

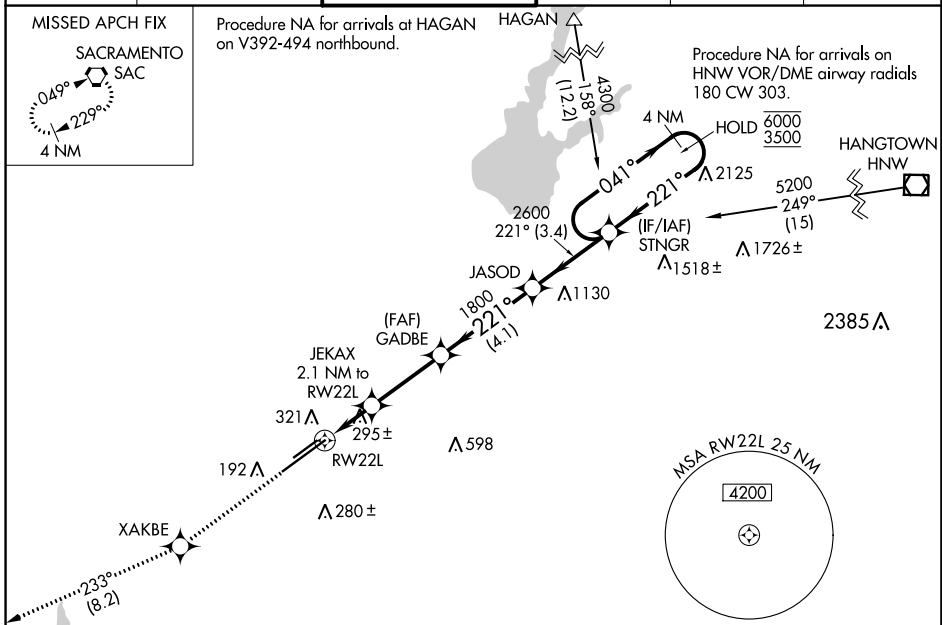
WAAS CH 40225 W22A	APP CRS 221°	Rwy Idg 11301 TDZE 98 Apt Elev 98
--	------------------------	--

RNAV (GPS) RWY 22L

SACRAMENTO MATHER (MHR)

RNP APCH.	MALS R	MISSED APPROACH: Climb to 3000 direct XAKBE and on track 233° to SAC VORTAC and hold.
<p>⚠ Circling NA northwest of Rwy 4R-22L. For uncompensated Baro-VNAV systems, LNAV/VNAV NA below -15°C or above 54°C. For inop ALS, increase LNAV/VNAV all Cats visibility to 1½ SM and LNAV Cat C/D visibility to 1¾ SM.</p>		

ATIS 118.325	NORCAL APP CON 127.4 317.5	MATHER TOWER * 120.65 (CTAF) 282.25	GND CON 121.85 307.9	CLNC DEL 121.85 307.9	UNICOM 122.95
------------------------	--------------------------------------	---	--------------------------------	---------------------------------	-------------------------

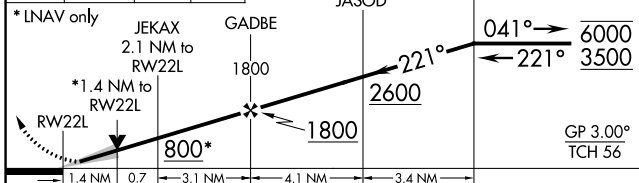


SW-2, 22 FEB 2024 to 21 MAR 2024

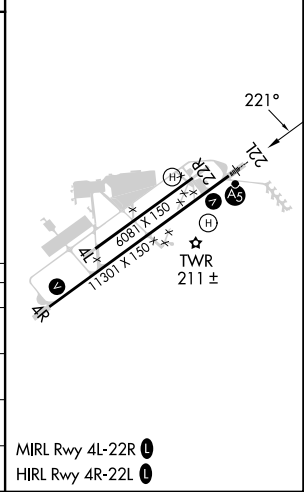
SW-2, 22 FEB 2024 to 21 MAR 2024

ELEV 98	TDZE 98
----------------	----------------

3000	XAKBE	tr 233°	SAC	VGSI and RNAV glidepath not coincident (VGSI Angle 3.00/TCH 50).
------	-------	---------	-----	--



CATEGORY	A	B	C	D
LPV DA	298-½		200 (200-½)	
LNAV/VNAV DA	517-¾		419 (500-¾)	
LNAV MDA	580-½ 482 (500-½)		580-1 482 (500-1)	
CIRCLING	580-1 482 (500-1)		600-1½ 800-2¼ 502 (600-1½) 702 (800-2¼)	



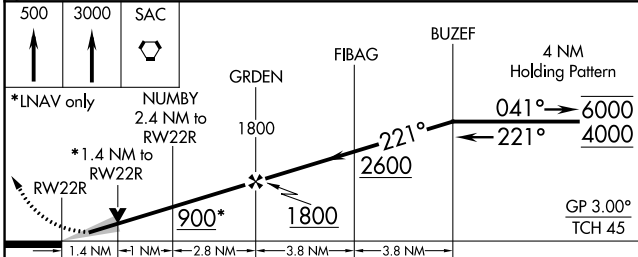
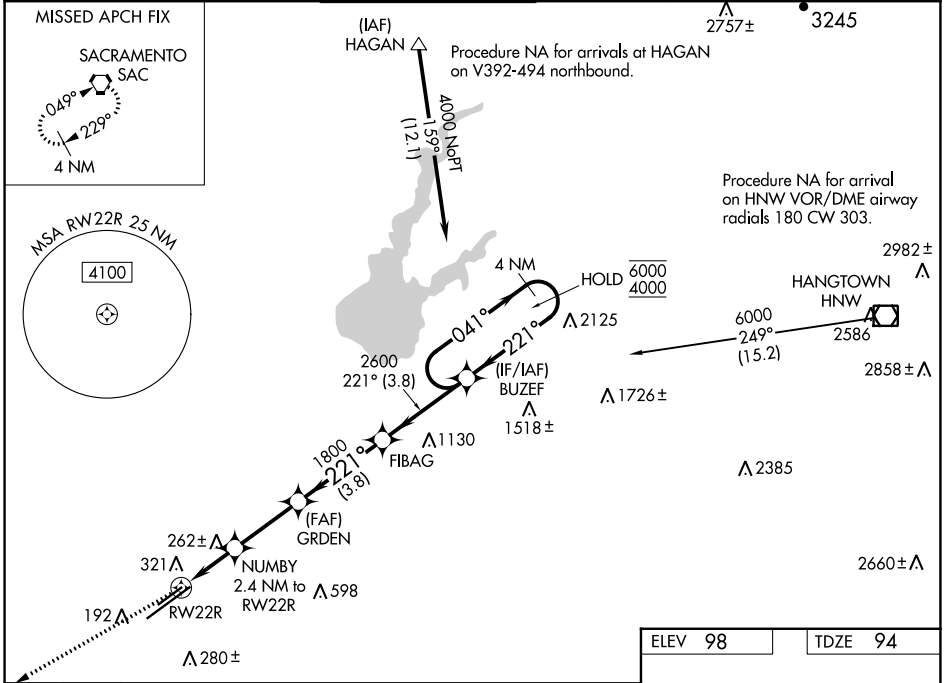
WAAS CH 42943 W22B	APP CRS 221°	Rwy Idg TDZE Apt Elev	6081 94 98
--	------------------------	-----------------------------	---------------------------------------

RNAV (GPS) RWY 22R

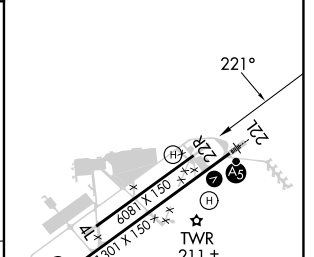
SACRAMENTO MATHER (MHR)

RNP APCH.		MISSED APPROACH: Climb to 500 then climb to 3000 direct SAC VORTAC and hold.	
<p>⚠ Circling NA northwest of Rwy 4L-22R. For uncompensated Baro-VNAV systems, LNAV/VNAV NA below -15°C or above 54°C.</p>			

ATIS 118.325	NORCAL APP CON 127.4 317.5	MATHER TOWER ★ 120.65 (CTAF) 282.25	GND CON 121.85 307.9	CLNC DEL 121.85 307.9	UNICOM 122.95
------------------------	--------------------------------------	---	--------------------------------	---------------------------------	-------------------------



ELEV 98	TDZE 94
---------	---------



CATEGORY	A	B	C	D
LPV DA		294- ³ / ₄	200 (200- ³ / ₄)	
LNAV/VNAV DA		369- ⁷ / ₈	275 (300- ⁷ / ₈)	
LNAV MDA	580-1	486 (500-1)	580- ¹³ / ₈	486 (500-1 ³ / ₈)
C CIRCLING	580-1	482 (500-1)	600-1 ¹ / ₂ 502 (600-1 ¹ / ₂)	800-2 ¹ / ₄ 702 (800-2 ¹ / ₄)

MIRL Rwy 4L-22R ⓪
HIRL Rwy 4R-22L ⓪

SW-2, 22 FEB 2024 to 21 MAR 2024

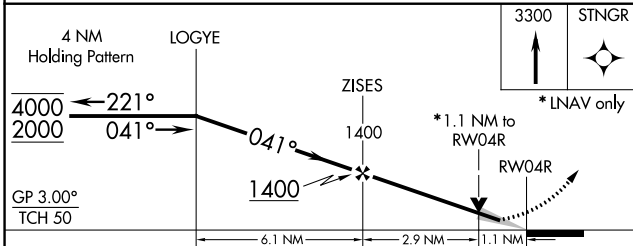
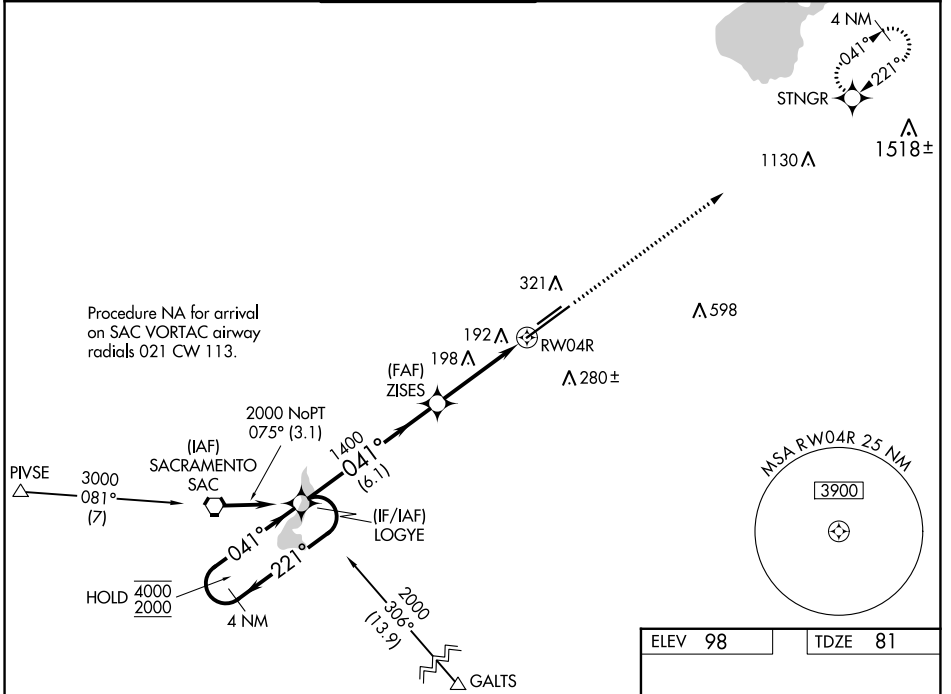
SW-2, 22 FEB 2024 to 21 MAR 2024

WAAS CH 45601 W04A	APP CRS 041°	Rwy Idg 11301 TDZE 81 Apt Elev 98
---------------------------------	------------------------	--

RNAV (GPS) RWY 4R

SACRAMENTO MATHER (MHR)

RNP APCH.		MISSED APPROACH: Climb to 3300 direct STNGR and hold.			
<p>▽ Circling NA northwest of Rwy 4R-22L. For uncompensated Baro-VNAV systems, LNAV/VNAV NA below -15°C or above 37°C.</p>					
ATIS 118.325	NORCAL APP CON 127.4 317.5	MATHER TOWER ★ 120.65 (CTAF) 0 282.25	GND CON 121.85 307.9	CLNC DEL 121.85 307.9	UNICOM 122.95



ELEV 98	TDZE 81
---------	---------

MIRL Rwy 4L-22R 0

HIRL Rwy 4R-22L 0

TWR 211 ±

688' X 150' ±

1130' X 150' ±

SW-2, 22 FEB 2024 to 21 MAR 2024

SW-2, 22 FEB 2024 to 21 MAR 2024