

LOC I-MGJ <b>111.7</b>	APP CRS <b>036°</b>	Rwy Idg TDZE Apt Elev	<b>5006</b> <b>355</b> <b>370</b>
---------------------------	------------------------	-----------------------------	---

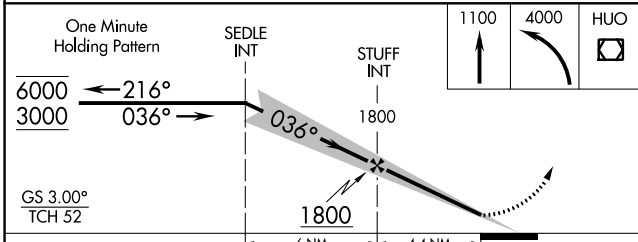
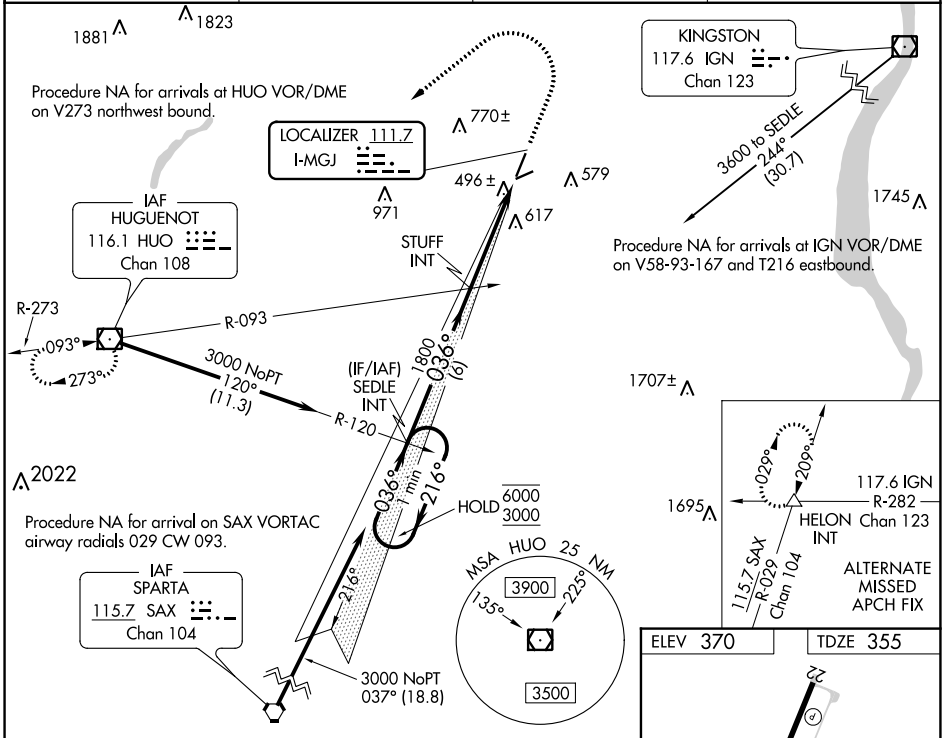
# ILS or LOC RWY 4

ORANGE COUNTY (MGJ)

**⚠** Circling Rwy 8, 22, 26 NA at night.  
**⚠** NA Rwy 4 helicopter visibility reduction below 3/4 SM NA.

MISSED APPROACH: Climb to 1100 then climbing left turn to 4000 direct HUUO VOR/DME and hold.

ASOS <b>119.275</b>	NEW YORK APP CON <b>132.75 363.1</b>	CLNC DEL <b>123.85</b>	UNICOM <b>122.725 (CTAF)</b>
------------------------	---	---------------------------	---------------------------------



ELEV 370	TDZE 355
REIL Rwy 4 and 22 HIRL Rwy 4-22 MIRL Rwy 8-26	
FAF to MAP 4.4 NM	
Knots	60 90 120 150 180
Min:Sec	4:24 2:56 2:12 1:46 1:28

NE-2, 22 FEB 2024 to 21 MAR 2024

NE-2, 22 FEB 2024 to 21 MAR 2024

APP CRS	Rwy Idg	<b>5006</b>
<b>216°</b>	TDZE	<b>370</b>
	Apt Elev	<b>370</b>

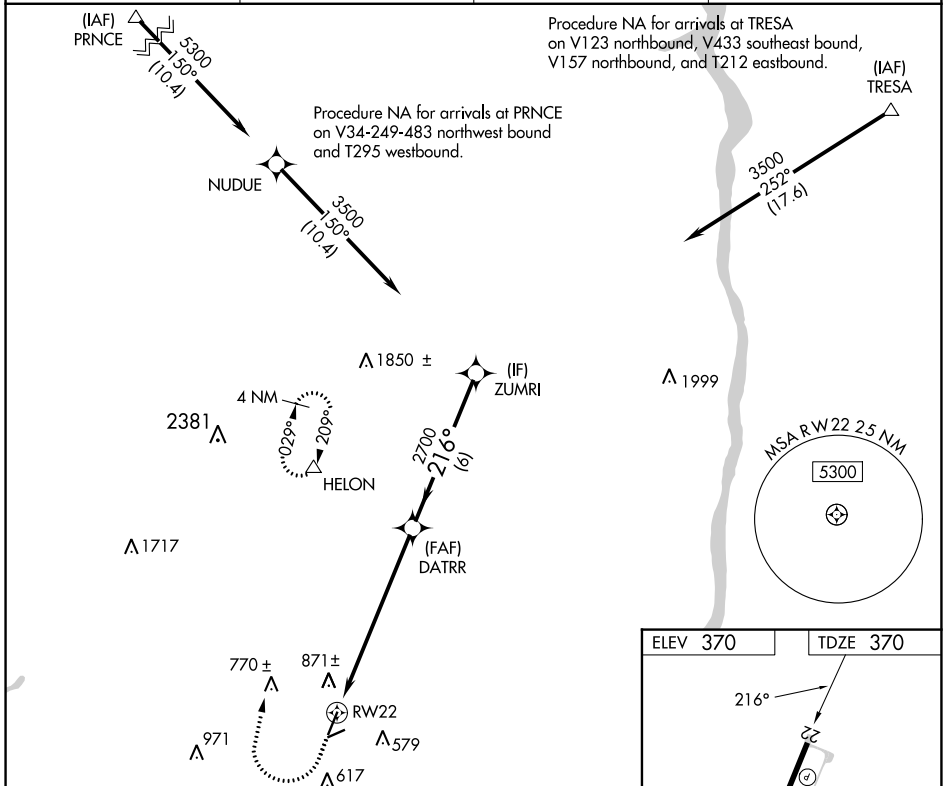
# RNAV (GPS) RWY 22

ORANGE COUNTY (MGJ)

RNP APCH.  
 ▼ Rwy 22 helicopter visibility reduction below 1 SM NA.  
 ▲ Straight-in Rwy 22 NA at night, Circling Rwy 8, 22, 26 NA at night.

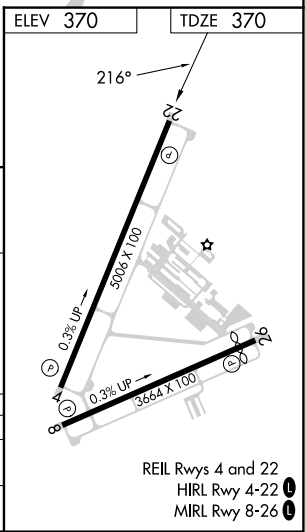
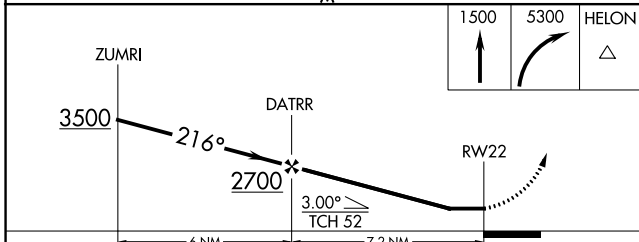
MISSED APPROACH: Climb to 1500 then climbing right turn to 5300 direct HELON and hold, continue climb-in-hold to 5300.

ASOS <b>119.275</b>	NEW YORK APP CON <b>132.75 363.1</b>	CLNC DEL <b>123.85</b>	UNICOM <b>122.725 (CTAF)</b>
------------------------	---	---------------------------	---------------------------------



NE-2, 22 FEB 2024 to 21 MAR 2024

NE-2, 22 FEB 2024 to 21 MAR 2024



CATEGORY	A	B	C	D
LNVA MDA	1140-1 770 (800-1)	1140-1¼ 770 (800-1¼)	1140-2½ 770 (800-2½)	
CIRCLING	1180-1 810 (900-1)	1180-1¼ 810 (900-1¼)	1180-2½ 810 (900-2½)	1220-2¾ 850 (900-2¾)

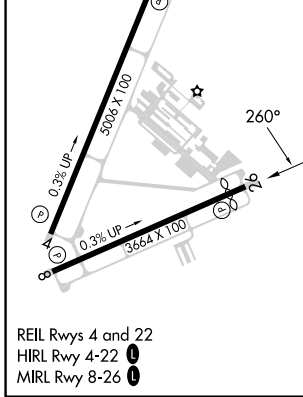
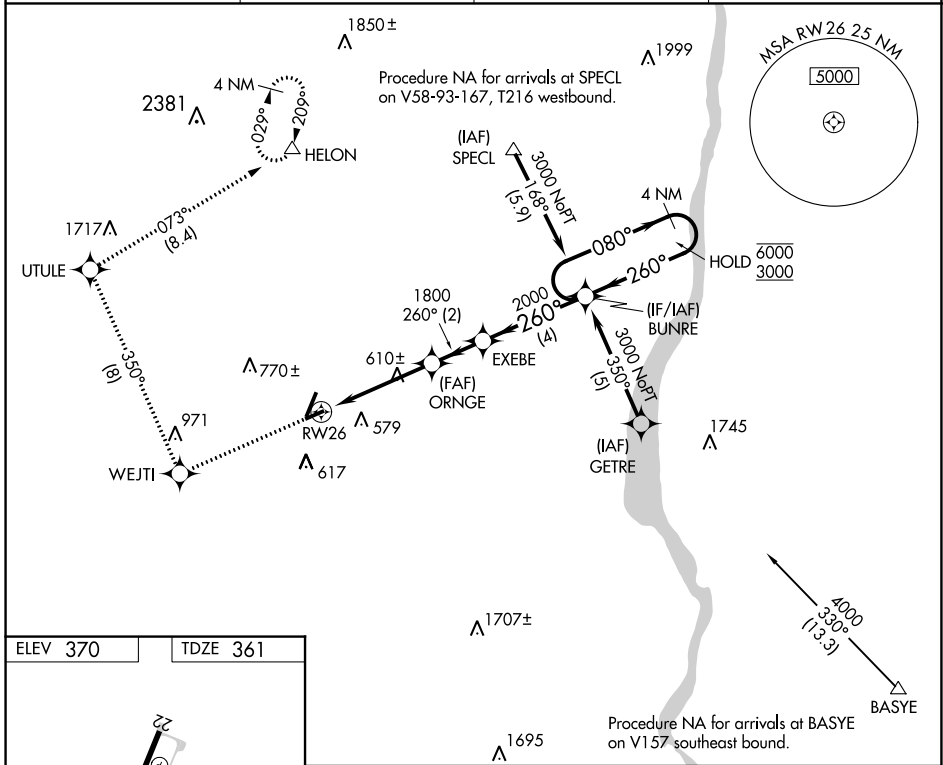
APP CRS <b>260°</b>	Rwy Idg <b>3349</b>
	TDZE <b>361</b>
	Apt Elev <b>370</b>

# RNAV (GPS) RWY 26

ORANGE COUNTY (MGJ)

RNP APCH.	MISSED APPROACH: Climb to 4000 direct WEJTI and right turn on track 350° to UTULE and on track 073° to HELON and hold.
▼ Rwy 26 helicopter visibility reduction below 1 SM NA.	
▲ Straight-in Rwy 26 NA at night, Circling Rwy 8, 22, 26 NA at night.	

ASOS <b>119.275</b>	NEW YORK APP CON <b>132.75 363.1</b>	CLNC DEL <b>123.85</b>	UNICOM <b>122.725 (CTAF) 0</b>
------------------------	---	---------------------------	-----------------------------------



4000	WEJTI	UTULE	HELON	Visual Segment- Obstacles.
↑	☀	☀ tr 350°	☀ tr 073°	BUNRE 4 NM Holding Pattern
VGSi and descent angles not coincident (VGSi Angle 3.50/TCH 43).				
4.3 NM		2 NM		4 NM
CATEGORY	A	B	C	D
LNAV MDA	920-1	559 (600-1)	920-1½ 559 (600-1½)	920-1¾ 559 (600-1¾)
<input checked="" type="checkbox"/> CIRCLING	1200-1¼	830 (900-1¼)	1200-2½ 830 (900-2½)	1220-2¾ 850 (900-2¾)

NE-2, 22 FEB 2024 to 21 MAR 2024

NE-2, 22 FEB 2024 to 21 MAR 2024

# RNAV (GPS) RWY 4

ORANGE COUNTY (MGJ)

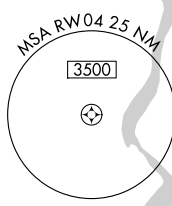
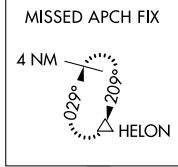
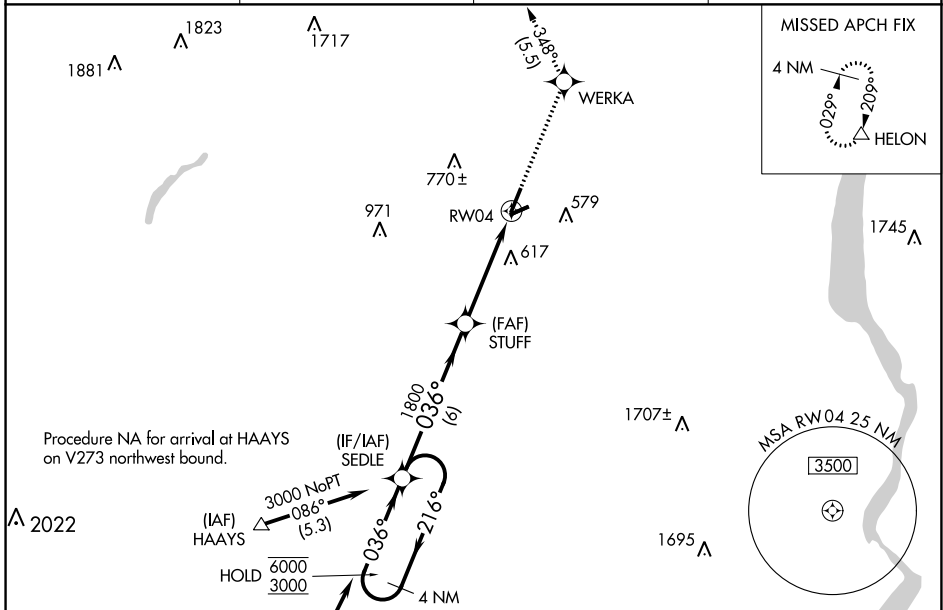
APP CRS <b>036°</b>	Rwy Idg <b>5006</b>
	TDZE <b>355</b>
	Apt Elev <b>370</b>

RNP APCH.

**⚠** Circling Rwy 8, 22, 26 NA at night. Rwy 4 helicopter visibility reduction below 3/4 SM NA.

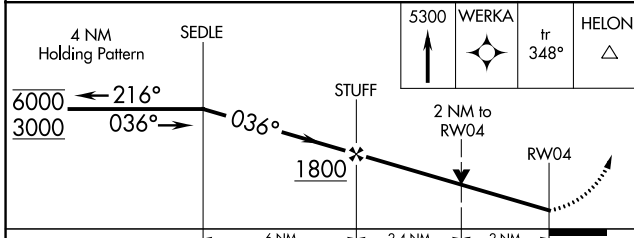
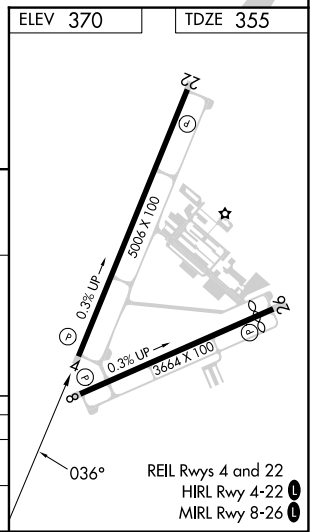
**MISSED APPROACH:** Climb to 5300 direct WERKA and on track 348° to HELON and hold. continue climb-in-hold to 5300.

ASOS <b>119.275</b>	NEW YORK APP CON <b>132.75 363.1</b>	CLNC DEL <b>123.85</b>	UNICOM <b>122.725 (CTAF) 0</b>
------------------------	---	---------------------------	-----------------------------------



Procedure NA for arrival at HAAYS on V273 northwest bound.

Procedure NA for arrival on SAX VORTAC airway radials 311 CW 093.



CATEGORY	A	B	C	D
LNNAV MDA	1060-1 705 (700-1)		1060-2 705 (700-2)	
<b>C</b> CIRCLING	1180-1 810 (900-1)		1180-2 1/4 810 (900-2 1/4)	1220-2 3/4 850 (900-2 3/4)

NE-2, 22 FEB 2024 to 21 MAR 2024

NE-2, 22 FEB 2024 to 21 MAR 2024

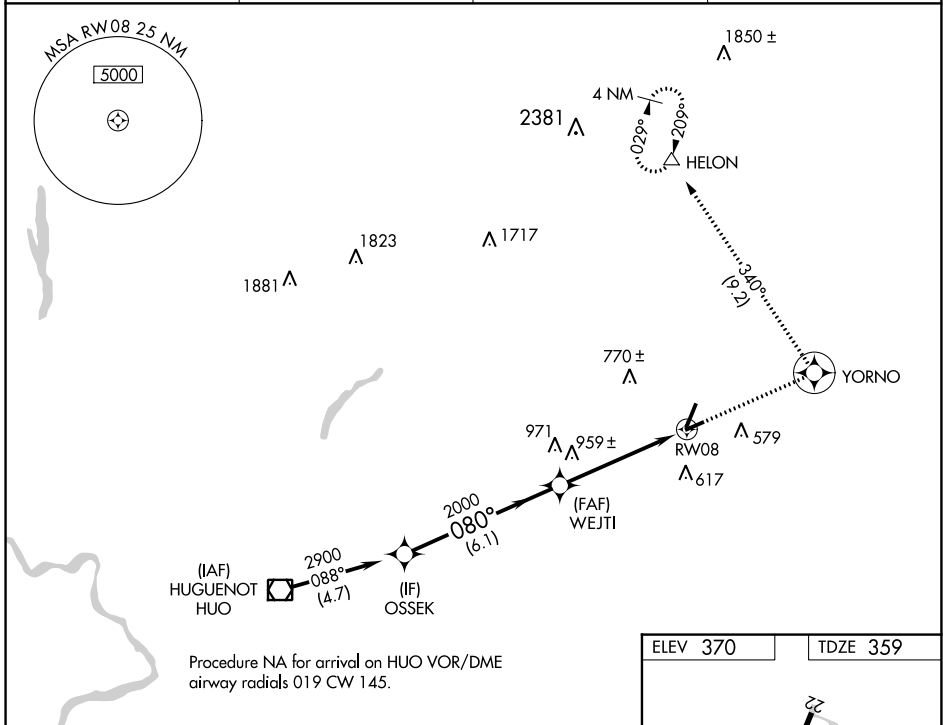
WAAS CH <b>50216</b> <b>W08A</b>	APP CRS <b>080°</b>	Rwy Idg TDZE Apt Elev	<b>3664</b> <b>359</b> <b>370</b>
--	------------------------	-----------------------------	---

# RNAV (GPS) RWY 8

ORANGE COUNTY (MGJ)

RNP APCH.	MISSED APPROACH: Climb to 5300 direct YORNO and left turn on track 340° to HELON and hold, continue climb-in-hold to 5300.
<p>▼ Rwy 8 helicopter visibility reduction below 1 SM NA. Straight-in Rwy 8 NA at night, Circling Rwy 8, 22, 26 NA at night.</p>	

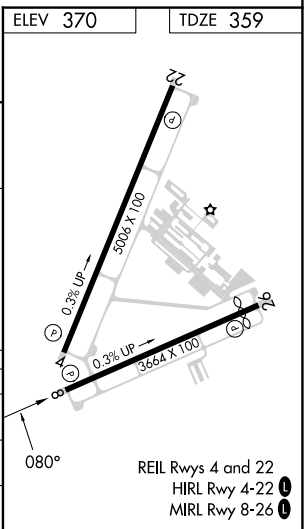
ASOS <b>119.275</b>	NEW YORK APP CON <b>132.75 363.1</b>	CLNC DEL <b>123.85</b>	UNICOM <b>122.725 (CTAF) 0</b>
------------------------	---	---------------------------	-----------------------------------



NE-2, 22 FEB 2024 to 21 MAR 2024

NE-2, 22 FEB 2024 to 21 MAR 2024

VGSIs and RNAV glidepath not coincident (VGSIs Angle 3.50/TCH 49).				
OSSEK	WEJTI		RWY 08	
2900	2000		5300	
080°		tr 340°		HELON
6.1 NM		5 NM		
CATEGORY	A	B	C	D
LPV DA	1059-2½ 700 (700-2½)			
RNAV MDA	1220-1 861 (900-1)	1220-1¼ 861 (900-1¼)	1220-2½ 861 (900-2½)	1220-2¾ 861 (900-2¾)
CIRCLING	1220-1¼	850 (900-1¼)	1220-2½ 850 (900-2½)	1220-2¾ 850 (900-2¾)



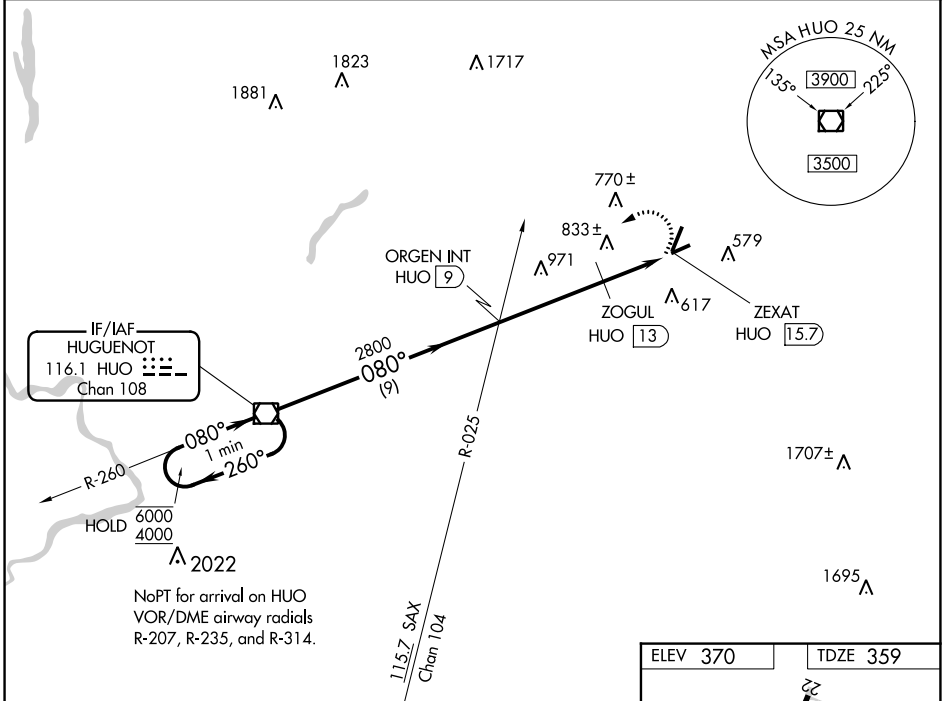
VOR/DME HUO <b>116.1</b> Chan <b>108</b>	APP CRS <b>080°</b>	Rwy Idg TDZE Apt Elev	<b>3664</b> <b>359</b> <b>370</b>
--	------------------------	-----------------------------	---

**VOR RWY 8**  
ORANGE COUNTY (MGJ)

**▼** Rwy 8 helicopter visibility reduction below 3/4 SM NA.  
**▲** Straight-in Rwy 8 NA at night, Circling Rwy 8, 22, 26 NA at night.

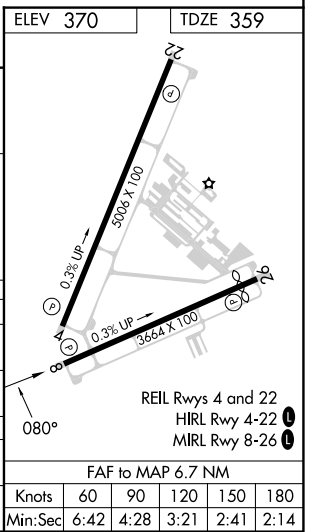
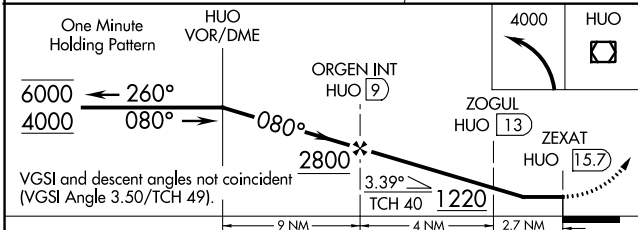
MISSED APPROACH: Climbing left turn to 4000 direct HUO VOR/DME and hold.

ASOS <b>119.275</b>	NEW YORK APP CON <b>132.75 363.1</b>	CLNC DEL <b>123.85</b>	UNICOM <b>122.725 (CTAF) 0</b>
------------------------	---	---------------------------	-----------------------------------



NE-2, 22 FEB 2024 to 21 MAR 2024

NE-2, 22 FEB 2024 to 21 MAR 2024



CATEGORY	A	B	C	D
S-8	1220-1 861 (900-1)	1220-1¼ 861 (900-1¼)	1220-2½ 861 (900-2½)	1220-2¾ 861 (900-2¾)
<b>C</b> CIRCLING	1220-1¼ 850 (900-1¼)	850 (900-1¼)	1220-2½ 850 (900-2½)	1220-2¾ 850 (900-2¾)
ZOGUL MINIMUMS				
S-8	1160-1 801 (800-1)	1160-1¼ 801 (800-1¼)	1160-2½ 801 (800-2½)	1160-2¾ 801 (800-2¾)
<b>C</b> CIRCLING	1200-1¼ 830 (900-1¼)	830 (900-1¼)	1200-2½ 830 (900-2½)	1220-2¾ 850 (900-2¾)