

WAAS CH 99501 W16A	APP CRS 159°	Rwy Idg 5002 TDZE 1278 Apt Elev 1278
--	------------------------	---

RNAV (GPS) RWY 16

MARSHFIELD MUNI (MFI)

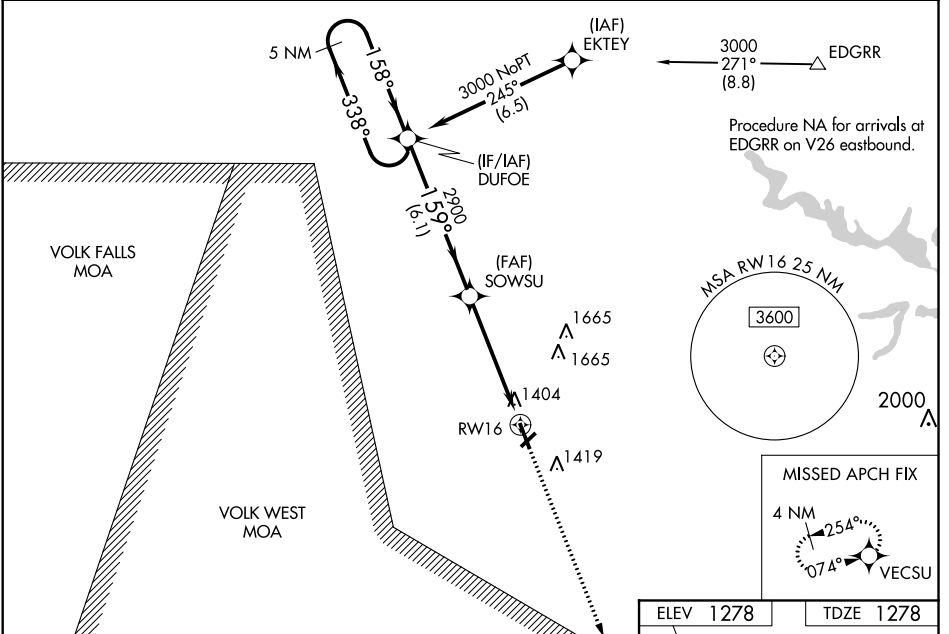
⚠ For uncompensated Baro-VNAV systems, LNAV/VNAV NA below -21°C (-5°F) or above 54°C (130°F). Baro-VNAV and VDP NA when using Central Wisconsin altimeter setting. DME/DME RNP-0.3 NA. Rwy 16 helicopter visibility reduction below ½ SM NA. When local altimeter setting not received, use Central Wisconsin altimeter setting and increase all DA 56 feet and all visibility ¼ SM, increase all MDA 60 feet and LNAV Cat C/D visibility ¼ SM.

MISSED APPROACH:
Climb to 3000 direct
VECSU and hold.

ASOS
121.575

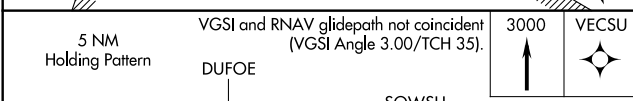
MINNEAPOLIS CENTER
124.4 317.7

UNICOM
123.0 (CTAF)

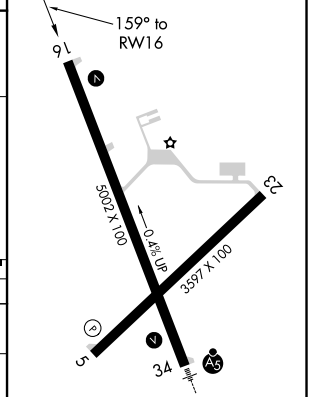


EC-3, 22 APR 2021 to 20 MAY 2021

EC-3, 22 APR 2021 to 20 MAY 2021



ELEV 1278	TDZE 1278
------------------	------------------



CATEGORY	A	B	C	D
LPV DA		1639-1¼	361 (400-1¼)	
LNAV/VNAV DA		1682-1¾	404 (500-1¾)	
LNAV MDA	1760-1	482 (500-1)	1760-1¾	482 (500-1¾)
C CIRCLING	1760-1	482 (500-1)	2020-2¼ 742 (800-2¼)	2020-2½ 742 (800-2½)

REIL Rwy 16 **Ⓛ**
MIRL Rwy 5-23 and 16-34 **Ⓛ**

WAAS CH 70732 W23A	APP CRS 227°	Rwy Idg 3597 TDZE 1258 Apt Elev 1278
--	------------------------	---

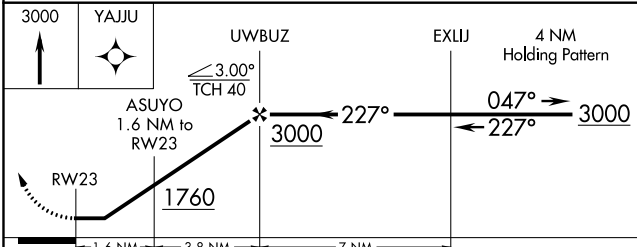
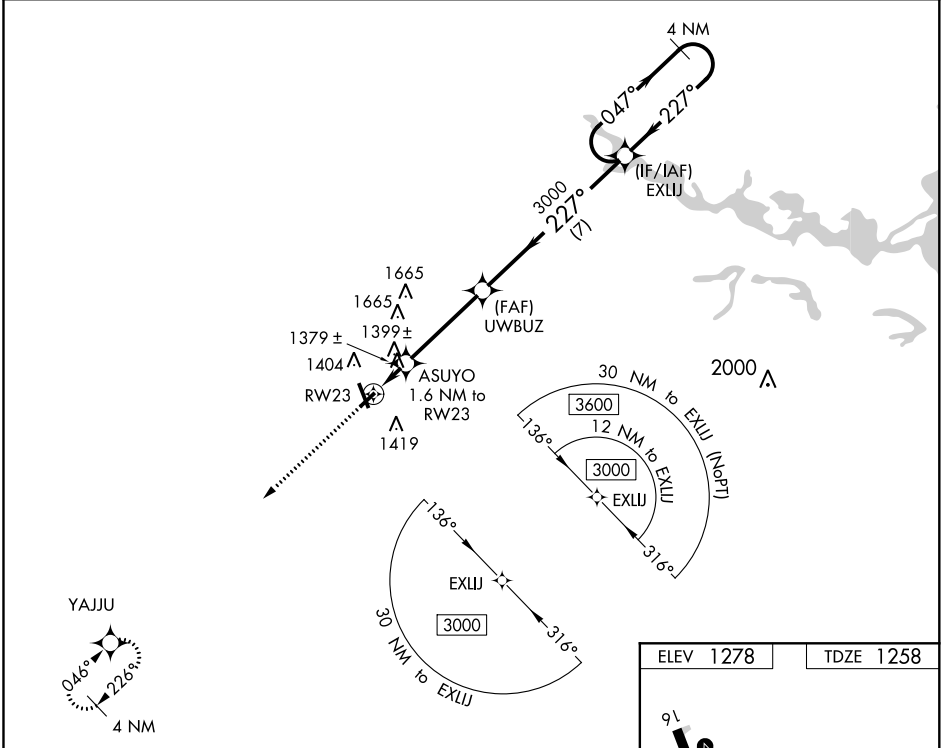
RNAV (GPS) RWY 23

MARSHFIELD MUNI (MFI)

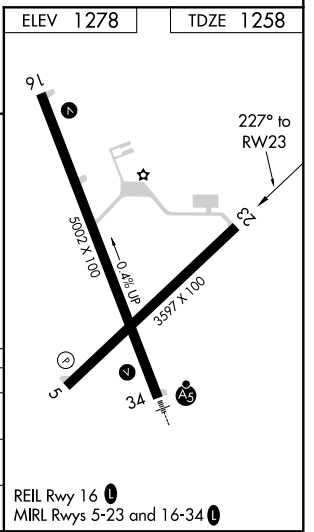
▽ DME/DME RNP-0.3 NA. Helicopter visibility reduction below ¾ SM NA. When local altimeter setting not received, use Central Wisconsin altimeter setting and increase all MDA 60 feet, increase LP and LNAV visibility Cat C/D ¼ mile.

▲ MISSED APPROACH: Climb to 3000 direct YAJJU and hold.

ASOS 121.575	MINNEAPOLIS CENTER 124.4 317.7	UNICOM 123.0 (CTAF) 0
------------------------	--	---------------------------------



CATEGORY	A	B	C	D
LP MDA	1640-1	382 (400-1)	1640-1½	382 (400-1½)
LNAV MDA	1660-1	402 (400-1)	1660-1½	402 (400-1½)
C CIRCLING	1760-1	482 (500-1)	2020-2¼ 742 (800-2¼)	2020-2½ 742 (800-2½)



EC-3, 22 APR 2021 to 20 MAY 2021

EC-3, 22 APR 2021 to 20 MAY 2021

WAAS CH 58101 W34A	APP CRS 339°	Rwy Idg TDZE 1258 Apt Elev 1278
--	------------------------	---

RNAV (GPS) RWY 34

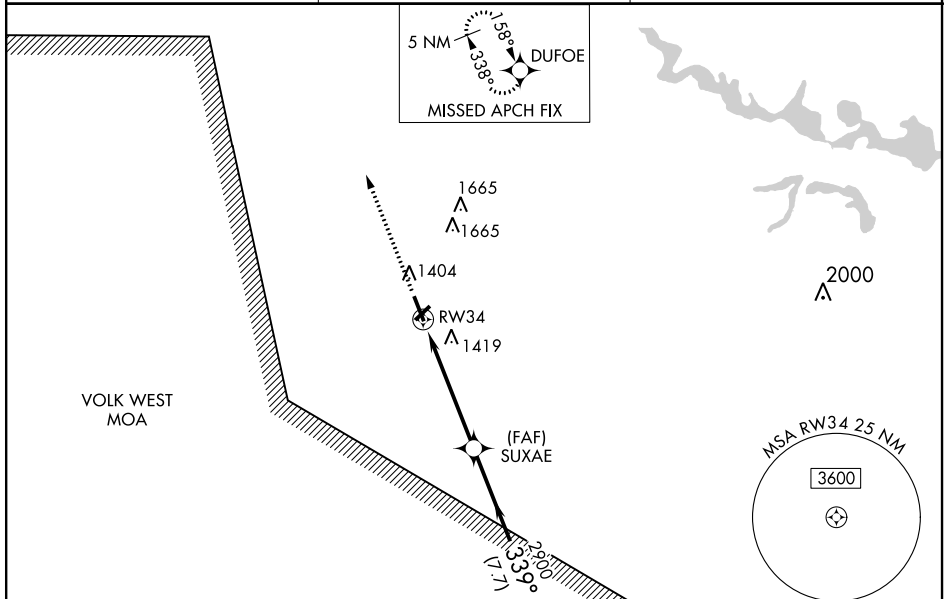
MARSHFIELD MUNI (MFI)

For inoperative MALSR increase LPV all Cats visibility to 1, increase LNAV Cats A and B to 1 and Cat D to 1/4. If local altimeter setting not received, use Central Wisconsin altimeter setting and increase all DAs/MDAs 60 feet. VDP and Baro-VNAV NA when using Central Wisconsin altimeter setting. For uncompensated Baro-VNAV systems, LNAV/VNAV NA below -17° C (2° F) or above 46° C (115° F). DME/DME RNP-0.3 NA.

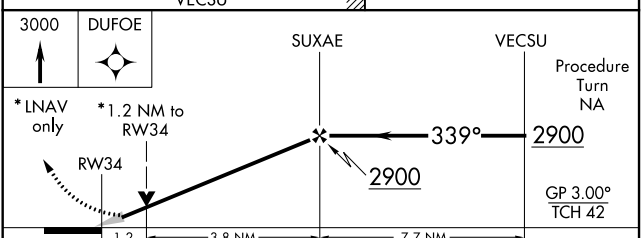
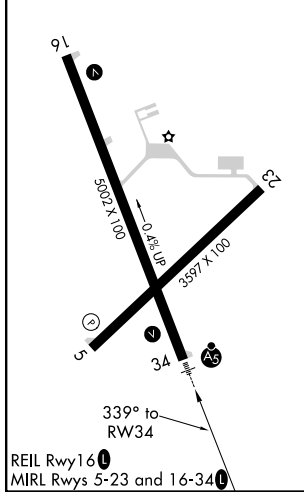


MISSED APPROACH: Climb to 3000 direct DUFOE and hold.

ASOS 121.575	MINNEAPOLIS CENTER 124.4 317.7	UNICOM 123.0 (CTAF)
------------------------	--	-------------------------------



ELEV 1278	TDZE 1258
-----------	-----------



CATEGORY	A	B	C	D
LPV DA	1508-3/4		250 (300-3/4)	
LNAV/VNAV DA	1718-1/4		460 (500-1/4)	
LNAV MDA	1680-3/4		422 (500-3/4)	
			1680-1 422 (500-1)	
CIRCLING	1760-1 3/4 482 (500-1 3/4)		2020-2 1/4 742 (800-2 1/4)	
			2020-2 1/2 742 (800-2 1/2)	

EC-3, 22 APR 2021 to 20 MAY 2021

EC-3, 22 APR 2021 to 20 MAY 2021

WAAS CH 50532 W05A	APP CRS 046°	Rwy Idg TDZE 1258 Apt Elev 1278
--	------------------------	---

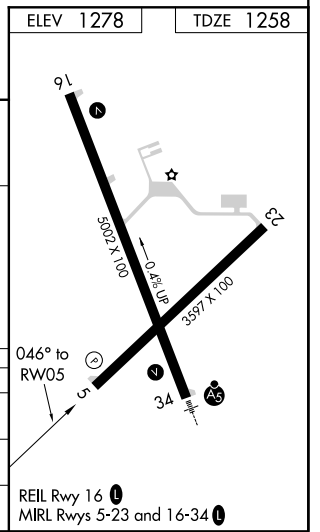
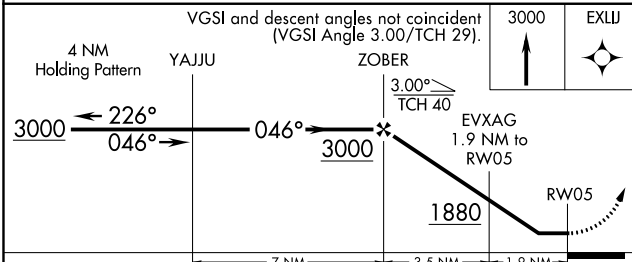
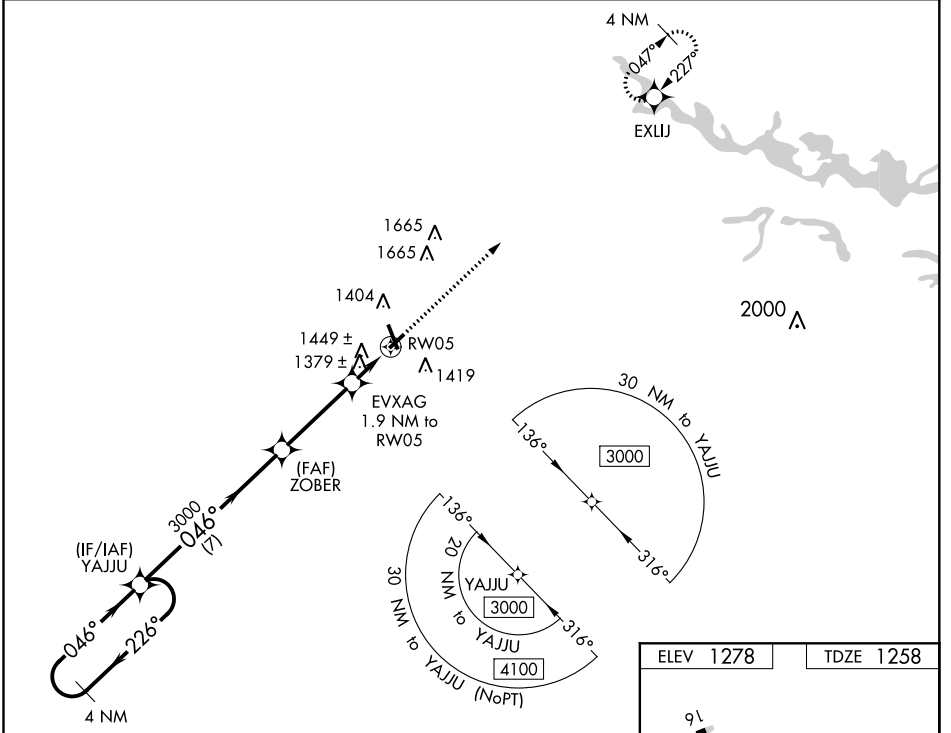
RNAV (GPS) RWY 5

MARSHFIELD MUNI (MFI)

▽ DME/DME RNP-0.3 NA. When local altimeter setting not received, use Central Wisconsin altimeter setting and increase all MDA 60 feet, increase visibility LP Cat C/D ¼.

⚠ MISSED APPROACH: Climb to 3000 direct EXLJU and hold.

ASOS 121.575	MINNEAPOLIS CENTER 124.4 317.7	UNICOM 123.0 (CTAF) ①
------------------------	--	---------------------------------



CATEGORY	A	B	C	D
LP MDA	1640-1	382 (400-1)	1640-1½	382 (500-1½)
LNVA MDA	1700-1	442 (500-1)	1700-1¾	442 (500-1¾)
C CIRCLING	1760-1	482 (500-1)	2020-2¼ 742 (800-2¼)	2020-2½ 742 (800-2½)

EC-3, 22 APR 2021 to 20 MAY 2021

EC-3, 22 APR 2021 to 20 MAY 2021