

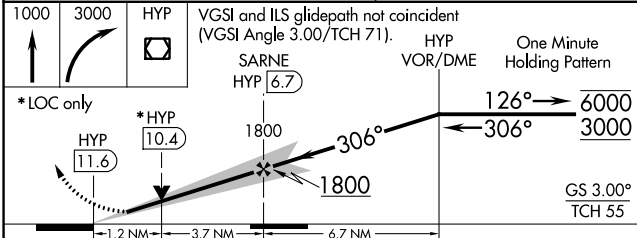
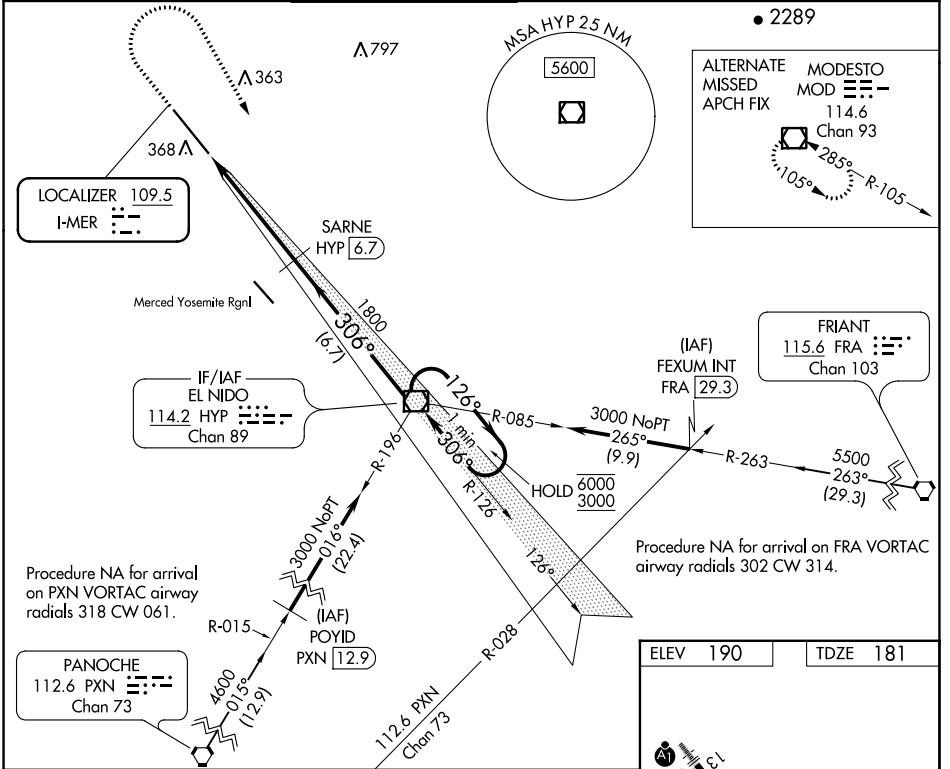
LOC I-MER 109.5	APP CRS 306°	Rwy Idg 11802 TDZE 181 Apt Elev 190
---------------------------	------------------------	--

ILS or LOC RWY 31

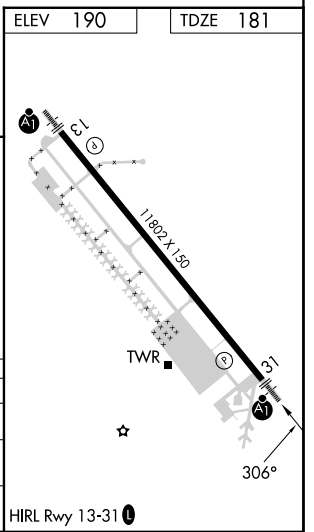
CASTLE (MER)

DME required for LOC only.	ALSF-1 	MISSED APPROACH: Climb to 1000 then climbing right turn to 3000 direct HYP VOR/DME and hold.
Circling NA southwest of Rwy 13-31. DME from HYP VOR/DME.		
Simultaneous reception of I-MER and HYP DME required.		

ATIS 124.475	NORCAL APP CON 120.95 269.45	CASTLE TOWER ★ 118.175 (CTAF) 235.775	GND CON 133.575	UNICOM 122.95	123.00
------------------------	--	---	---------------------------	-------------------------	---------------



CATEGORY	A	B	C	D
S-ILS 31	381-1/2 200 (200-1/2)			
S-LOC 31	620-1/2 439 (500-1/2)		620-3/4 439 (500-3/4)	
CIRCLING	660-1 470 (500-1)		720-1 1/2 530 (600-1 1/2)	800-2 610 (700-2)



SW-2, 22 FEB 2024 to 21 MAR 2024

SW-2, 22 FEB 2024 to 21 MAR 2024

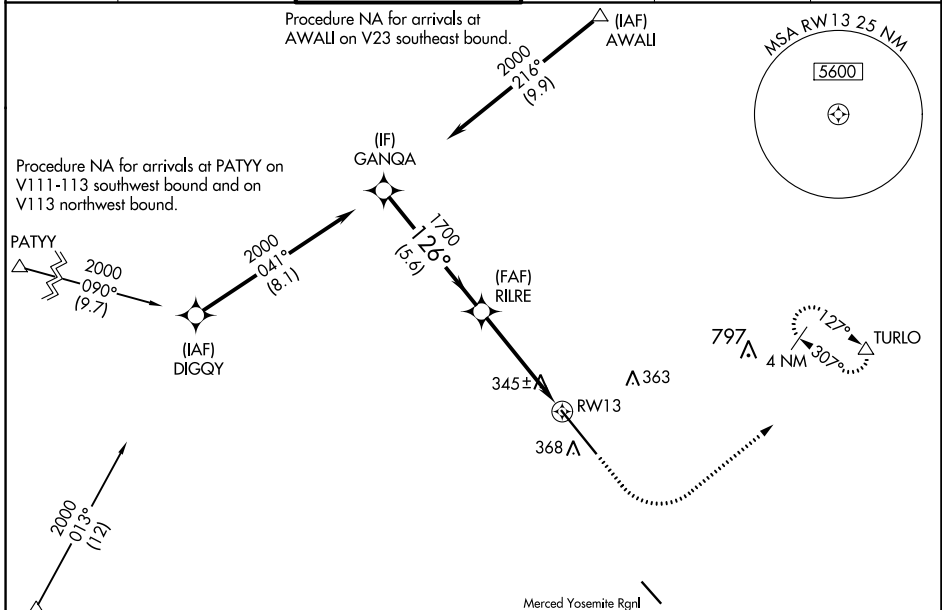
WAAS CH 50211 W13A	APP CRS 126°	Rwy Idg 11802 TDZE 190 Apt Elev 190
--	------------------------	--

RNAV (GPS) RWY 13

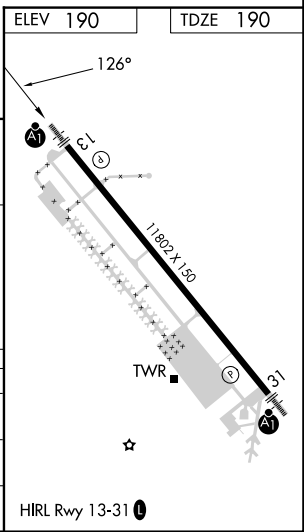
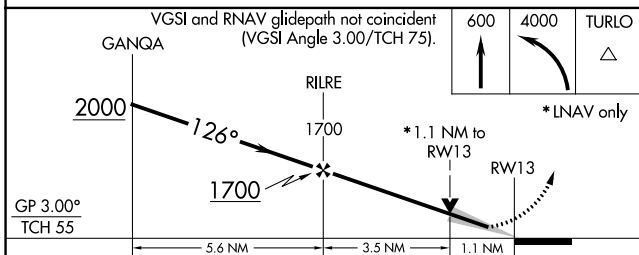
CASTLE (MER)

RNP APCH.	ALSF-1	MISSED APPROACH: Climb to 600 then climbing left turn to 4000 direct TURLO and hold, continue climb-in-hold to 4000.
<p>▼ For uncompensated Baro-VNAV systems, LNAV/VNAV NA below -1.5°C or above 54°C. For inoperative ALS, increase LNAV/VNAV all Cats visibility to 1½ SM, increase LNAV Cats A/B visibility to 1 SM, and increase LNAV Cat C/D visibility to 1½ SM.</p>		

ATIS 124,475	NORCAL APP CON 120,95 269,45	CASTLE TOWER ★ 118,175 (CTAF) 235,775	GND CON 133,575	UNICOM 122,95	123.0
------------------------	--	---	---------------------------	-------------------------	--------------



ELEV 190	TDZE 190
----------	----------



CATEGORY	A	B	C	D
LPV DA		390-¾	200 (200-¾)	
LNAV/VNAV DA		655-1	465 (500-1)	
LNAV MDA		600-¾	410 (500-¾)	

SW-2, 22 FEB 2024 to 21 MAR 2024

SW-2, 22 FEB 2024 to 21 MAR 2024

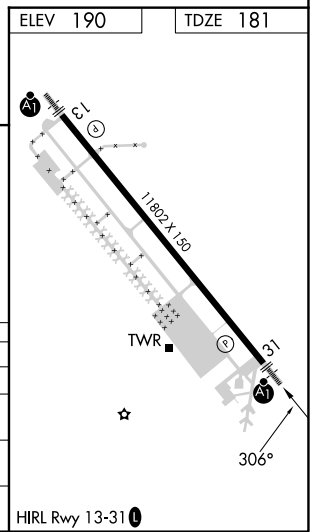
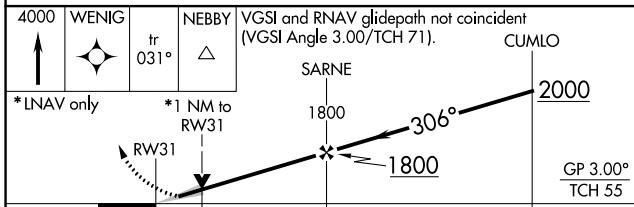
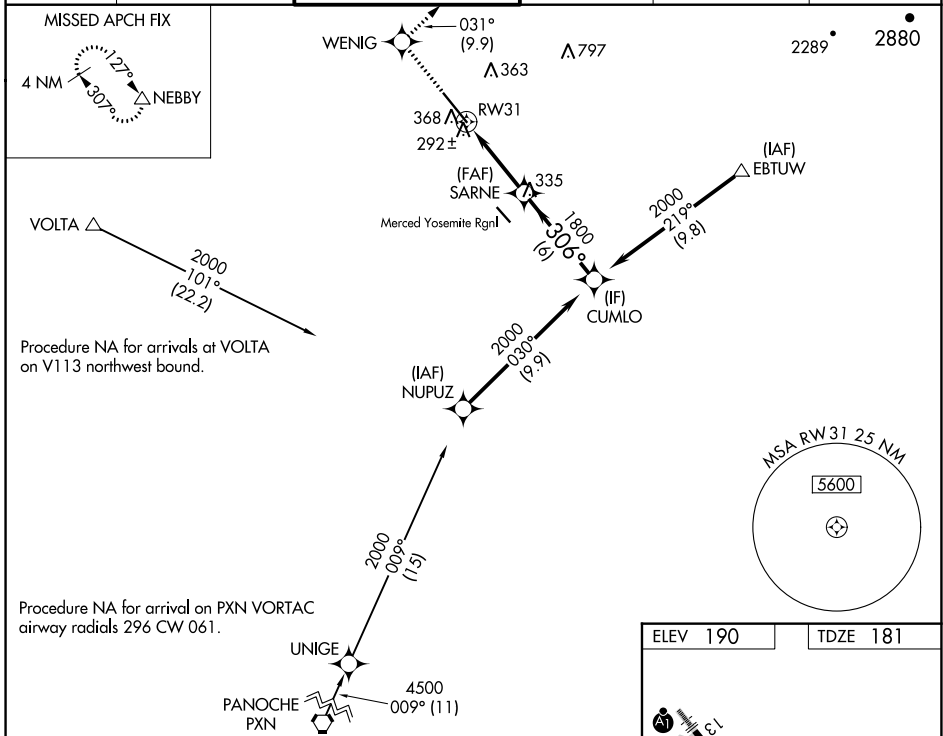
WAAS CH 87110 W31A	APP CRS 306°	Rwy Idg 11802 TDZE 181 Apt Elev 190
--	------------------------	--

RNAV (GPS) RWY 31

CASTLE (MER)

RNP APCH.	ALSF-1 	MISSED APPROACH: Climb to 4000 direct WENIG and on track 031° to NEBBY and hold, continue climb-in-hold to 4000.
<p>▼ Circling NA southwest of Rwy 13-31. For uncompensated Baro-VNAV systems, LNAV/VNAV NA below -15°C or above 54°C. For inoperative ALS, increase LNAV/VNAV all Cats visibility to ½ SM and LNAV Cats C/D visibility to 1 SM.</p>		

ATIS 124.475	NORCAL APP CON 120.95 269.45	CASTLE TOWER ★ 118.175 (CTAF) 235.775	GND CON 133.575	UNICOM 122.95	123.0
------------------------	--	---	---------------------------	-------------------------	--------------



CATEGORY	A	B	C	D
LPV DA		381-½	200 (200-½)	
LNAV/VNAV DA		498-½	317 (400-½)	
LNAV MDA	560-½	379 (400-½)	560-⅝	379 (400-⅝)
CIRCLING	660-1	470 (500-1)	720-1½ 530 (600-1½)	800-2 610 (700-2)

SW-2, 22 FEB 2024 to 21 MAR 2024

SW-2, 22 FEB 2024 to 21 MAR 2024