

LOC I-MBL 108.35	APP CRS 277°	Rwy Idg 5501
		TDZE 621
		Apt Elev 621

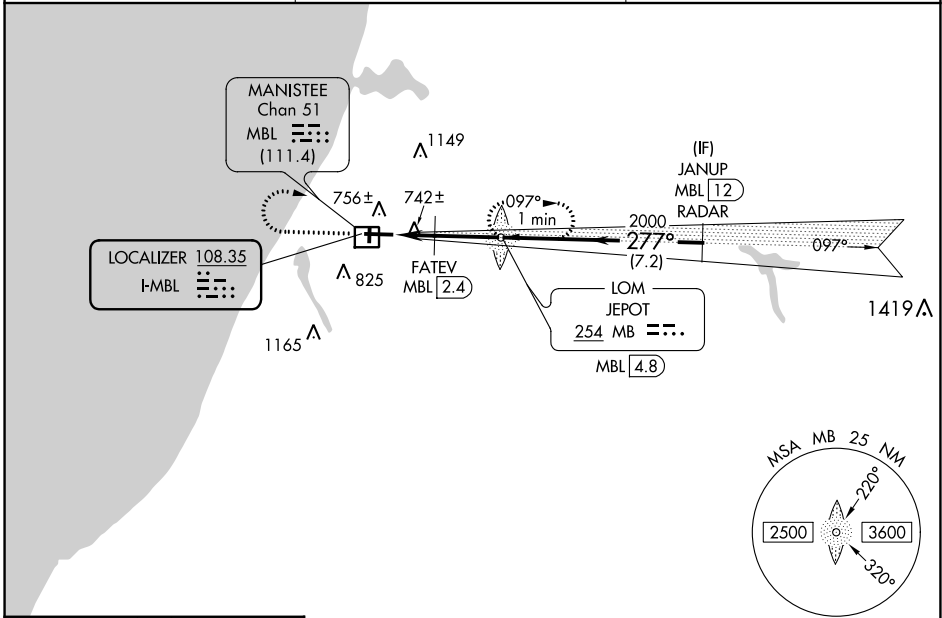
ILS or LOC RWY 28

MANISTEE COUNTY/BLACKER (MBL)

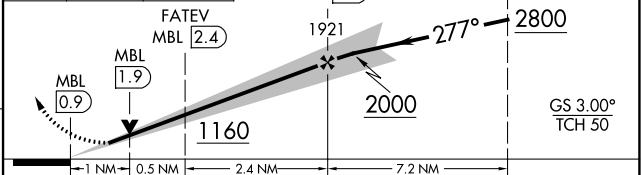
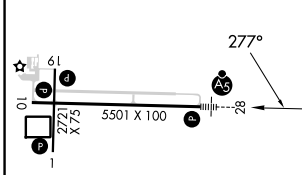
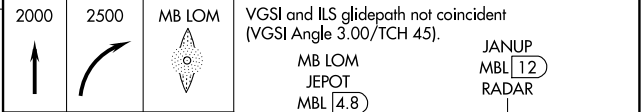
ADF required for missed approach. RADAR required for procedure entry.
DME or RADAR required.

MALSR MISSED APPROACH: Climb to 2000 then climbing right turn to 2500 direct JEPOT LOM/MBL 4.8 DME and hold.

AWOS-3PT 118.825	MINNEAPOLIS CENTER 120.85 322.35	UNICOM 122.8 (CTAF)
----------------------------	--	-------------------------------



ELEV 621	D	TDZE 621
----------	----------	----------



CATEGORY	A	B	C	D
S-ILS 28	821-1/2 200 (200-1/2)			
S-LOC 28	1160-1/2	539 (600-1/2)	1160-1	539 (600-1)
C CIRCLING	1160-1 539 (600-1)	1220-1 599 (600-1)	1400-2 1/4 779 (800-2 1/4)	1520-3 899 (900-3)
FATEV FIX MINIMUMS				
S-LOC 28	1000-1/2	379 (400-1/2)	1000-5/8	379 (400-5/8)
C CIRCLING	1160-1 539 (600-1)	1220-1 599 (600-1)	1400-2 1/4 779 (800-2 1/4)	1520-3 899 (900-3)

FAF to MAP 3.9 NM					
Knots	60	90	120	150	180
Min:Sec	3:54	2:36	1:57	1:34	1:18

EC-1, 22 FEB 2024 to 21 MAR 2024

EC-1, 22 FEB 2024 to 21 MAR 2024

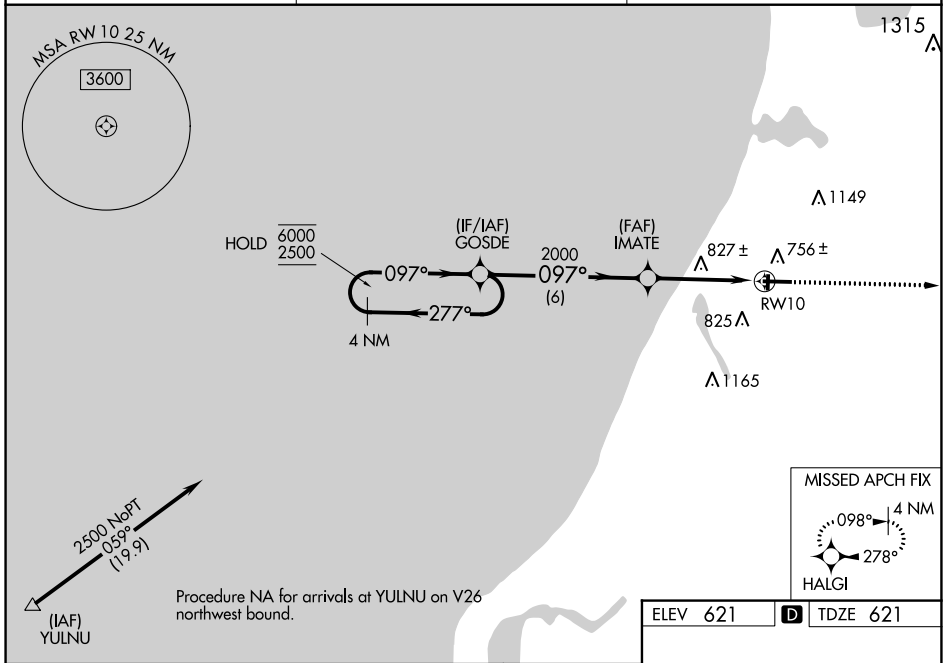
WAAS CH 60933 W10A	APP CRS 097°	Rwy Idg 5501 TDZE 621 Apt Elev 621
--	------------------------	---

RNAV (GPS) RWY 10

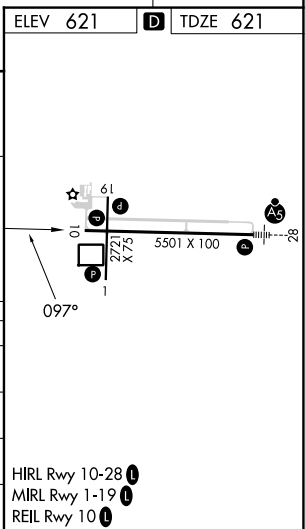
MANISTEE COUNTY/BLACKER (MBL)

RNP APCH - GPS.	MISSED APPROACH: Climb to 3000 direct HALGI and hold.
<p>⚠ Circling Rwy 1, 19 NA at night. Rwy 10 helicopter visibility reduction below $\frac{3}{4}$ SM NA. For uncompensated Baro-VNAV systems, LNAV/VNAV NA below -16°C or above 54°C.</p>	

AWOS-3PT 118.825	MINNEAPOLIS CENTER 120.85 322.35	UNICOM 122.8 (CTAF) U
----------------------------	--	--



4 NM Holding Pattern		VGSI and RNAV glidepath not coincident (VGSI Angle 3.00/TCH 30).		3000	HALGI
GOSDE		IMATE			
6000	2500	2000	2000	1.4 NM to RW10	RW10
GP 3.00°	TCH 53	6 NM	2.8 NM	1.4 NM	
CATEGORY	A	B	C	D	
LPV DA	890- $\frac{7}{8}$		269 (300- $\frac{7}{8}$)		
LNAV/VNAV DA	1091-1 $\frac{3}{8}$		470 (500-1 $\frac{3}{8}$)		
LNAV MDA	1080-1	459 (500-1)		1080-1 $\frac{3}{8}$	459 (500-1 $\frac{3}{8}$)
CIRCLING	1160-1 539 (600-1)	1220-1 599 (600-1)	1400-2 $\frac{1}{4}$ 779 (800-2 $\frac{1}{4}$)	1500-2 $\frac{3}{4}$ 879 (900-2 $\frac{3}{4}$)	



EC-1, 22 FEB 2024 to 21 MAR 2024

EC-1, 22 FEB 2024 to 21 MAR 2024

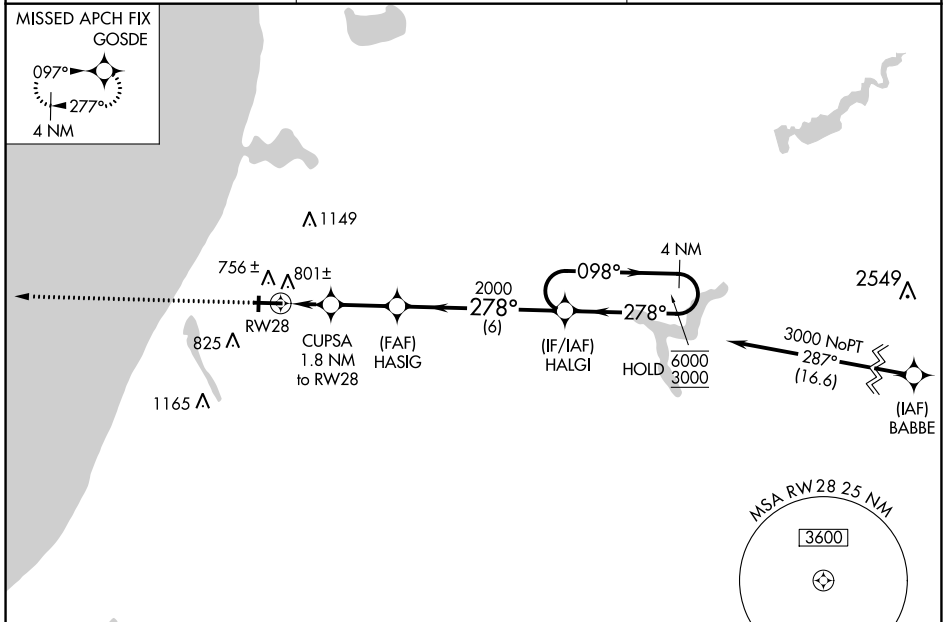
WAAS CH 42532 W28A	APP CRS 278°	Rwy Idg TDZE Apt Elev	5501 621 621
--	------------------------	-----------------------------	---

RNAV (GPS) RWY 28

MANISTEE COUNTY/BLACKER (MBL)

RNP APCH - GPS.	MALSR	MISSED APPROACH: Climb to 2500 direct GOSDE and hold.
Circling to Rwy 1, 19 NA at night. For uncompensated Baro-VNAV systems, LNAV/VNAV NA below -16°C or above 54°C.		

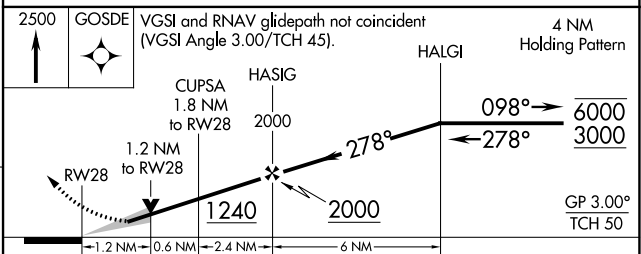
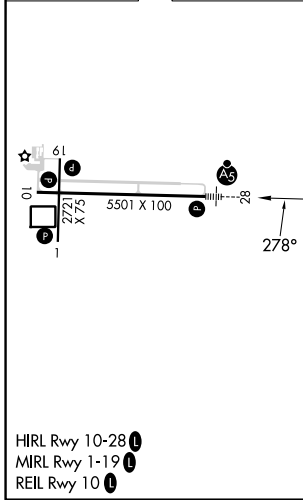
AWOS-3PT 118.825	MINNEAPOLIS CENTER 120.85 322.35	UNICOM 122.8 (CTAF) 0
----------------------------	--	---------------------------------



EC-1, 22 FEB 2024 to 21 MAR 2024

EC-1, 22 FEB 2024 to 21 MAR 2024

ELEV 621	D	TDZE 621
----------	----------	----------



CATEGORY	A	B	C	D
LPV DA		821-½	200 (200-½)	
LNAV/VNAV DA		984-⅝	363 (400-⅝)	
LNAV MDA	1060-½	439 (500-½)	1060-¾	439 (500-¾)
CIRCLING	1160-1 539 (600-1)	1220-1 599 (600-1)	1400-2¼ 779 (800-2¼)	1500-2¾ 879 (900-2¾)