

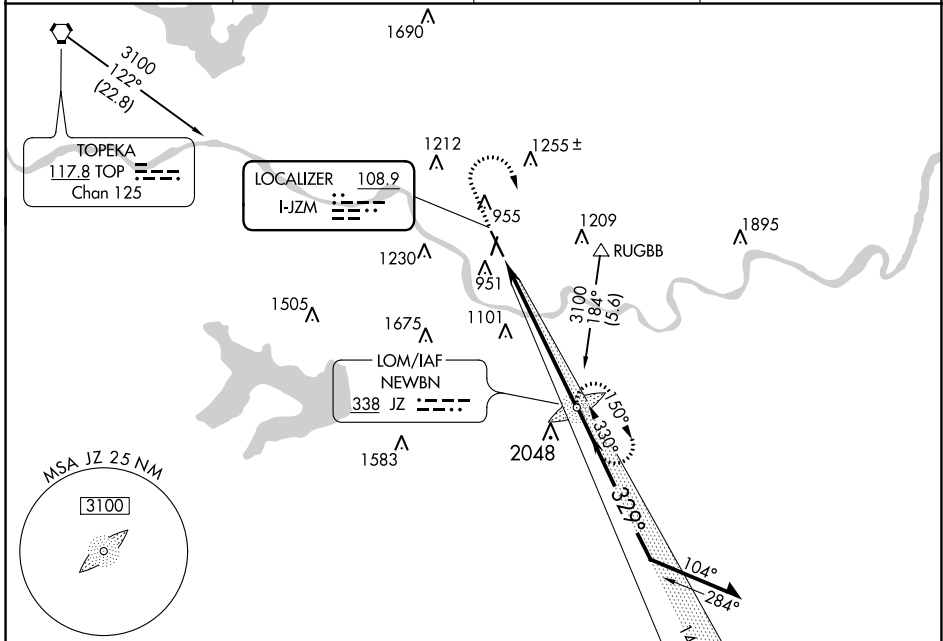
LOC I-JZM <b>108.9</b>	APP CRS <b>329°</b>	Rwy Idg <b>5700</b> TDZE <b>831</b> Apt Elev <b>833</b>
---------------------------	------------------------	---

# ILS or LOC RWY 33

LAWRENCE RGNL (LWC)

<p><b>⚠</b> When local altimeter setting not received, use Philip Billard Muni altimeter setting and increase DA to 1083 feet; increase all MDAs 60 feet and visibility Cat C ¼ SM.</p>	<p><b>MALSR</b></p>	<p><b>MISSED APPROACH:</b> Climb to 2000 then climbing right turn to 3100 direct NEWBN LOM and hold.</p>
---	---------------------	--

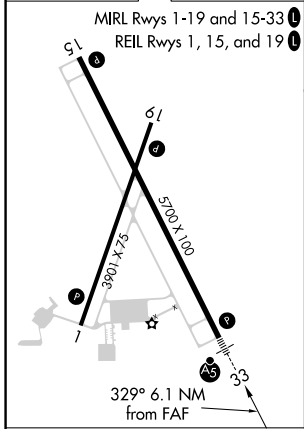
ASOS <b>121.225</b>	KANSAS CITY CENTER <b>123.8 343.7</b>	CLNC DEL <b>121.825</b>	UNICOM <b>123.0 (CTAF) 0</b>
------------------------	--	----------------------------	---------------------------------



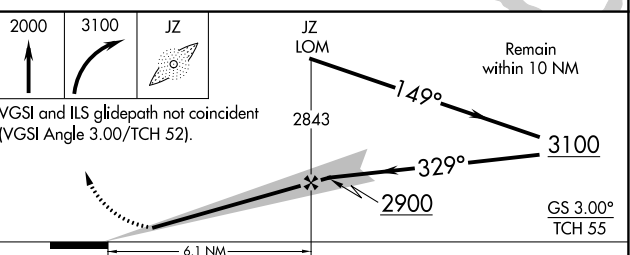
NC-2, 22 FEB 2024 to 21 MAR 2024

NC-2, 22 FEB 2024 to 21 MAR 2024

ELEV 833	TDZE 831
----------	----------



## ADF REQUIRED



FAF to MAP 6.1 NM					
Knots	60	90	120	150	180
Min:Sec	6:06	4:04	3:03	2:26	2:02

CATEGORY	A	B	C	D
S-ILS 33	1031-½ 200 (200-½)			NA
S-LOC 33	1260-½	429 (500-½)	1260-¾ 429 (500-¾)	NA
CIRCLING	1420-1 587 (600-1)	1480-1 647 (700-1)	1620-2¼ 787 (800-2¼)	NA

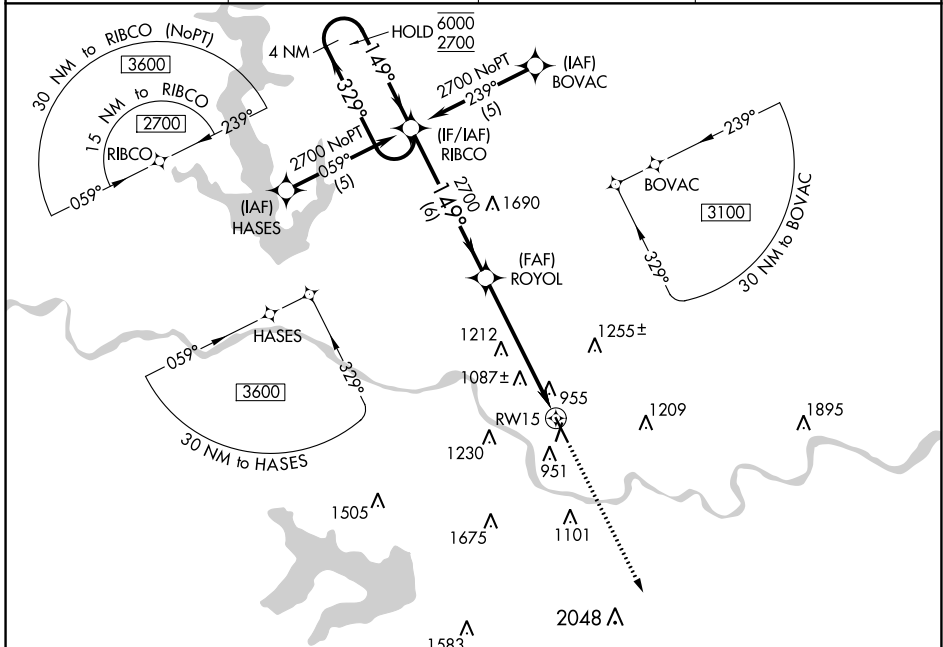
APP CRS	Rwy Idg	<b>5700</b>
<b>149°</b>	TDZE	<b>831</b>
	Apt Elev	<b>833</b>

# RNAV (GPS) RWY 15

LAWRENCE RGNL (LWC)

RNP APCH.	MISSED APPROACH: Climb to 3100 direct GOLEY and hold.
Rwy 15 Helicopter visibility reduction below 3/4 SM NA.	

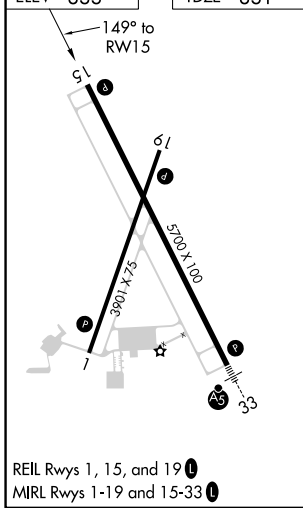
ASOS <b>121.225</b>	KANSAS CITY CENTER <b>123.8 343.7</b>	CLNC DEL <b>121.825</b>	UNICOM <b>123.0 (CTAF) 0</b>
------------------------	--	----------------------------	---------------------------------



NC-2, 22 FEB 2024 to 21 MAR 2024

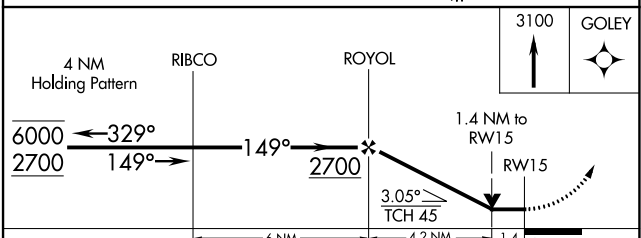
NC-2, 22 FEB 2024 to 21 MAR 2024

ELEV 833	TDZE 831
----------	----------



REIL Rwy 1, 15, and 19

MIRL Rwy 1-19 and 15-33



CATEGORY	A	B	C	D
LNAV MDA	1340-1	509 (600-1)	1340-1½ 509 (600-1½)	NA
CIRCLING	1420-1 587 (600-1)	1480-1 647 (700-1)	1620-2¼ 787 (800-2¼)	NA

WAAS CH <b>57913</b> <b>W33A</b>	APP CRS <b>330°</b>	Rwy Idg TDZE Apt Elev	<b>5700</b> <b>831</b> <b>833</b>
--	------------------------	-----------------------------	---

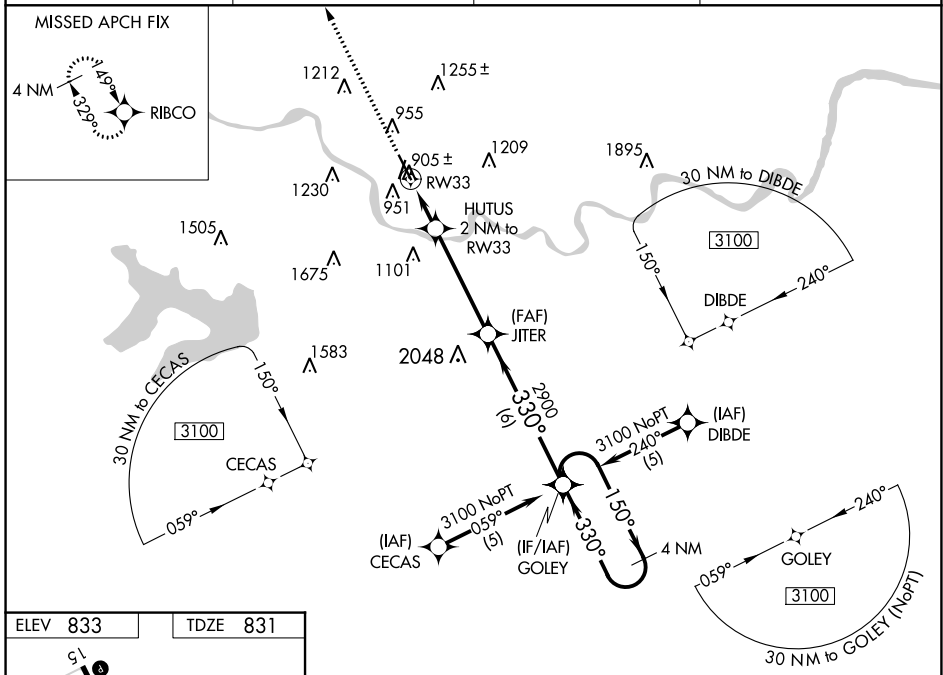
# RNAV (GPS) RWY 33

LAWRENCE RGNL (LWC)

**⚠** For uncompensated Baro-VNAV systems, LNAV/VNAV NA below -16°C (4°F) or above 54°C (130°F). DME/DME RNP-0.3 NA. When local altimeter setting not received, use Philip Billard Muni altimeter setting and increase LPV DA to 1083 feet, increase LNAV/VNAV DA to 1252 feet and all visibilities ¼ SM; increase all MDAs 60 feet and visibility Cat C ¼ SM. Baro-VNAV and VDP NA when using Philip Billard Muni altimeter setting.

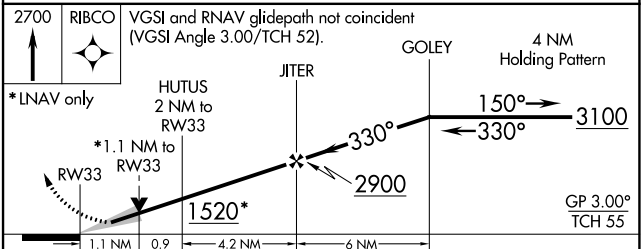
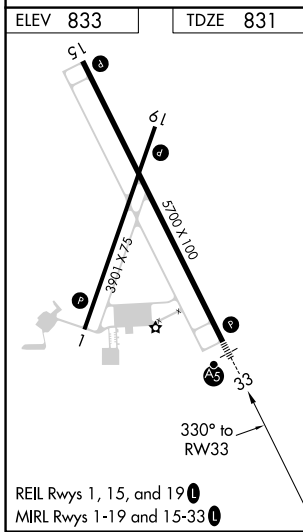
**MALSR**  
 MISSED APPROACH:  
Climb to 2700 direct RIBCO and hold.

ASOS <b>121.225</b>	KANSAS CITY CENTER <b>123.8 343.7</b>	CLNC DEL <b>121.825</b>	UNICOM <b>123.0 (CTAF) 1</b>
------------------------	--	----------------------------	---------------------------------



NC-2, 22 FEB 2024 to 21 MAR 2024

NC-2, 22 FEB 2024 to 21 MAR 2024



CATEGORY	A	B	C	D
LPV DA	1031-½	200 (200-½)		NA
LNAV/VNAV DA	1200-¾	369 (400-¾)		NA
LNAV MDA	1220-½	389 (400-½)		NA
CIRCLING	1420-1 587 (600-1)	1480-1 647 (700-1)	1620-2¼ 787 (800-2¼)	NA

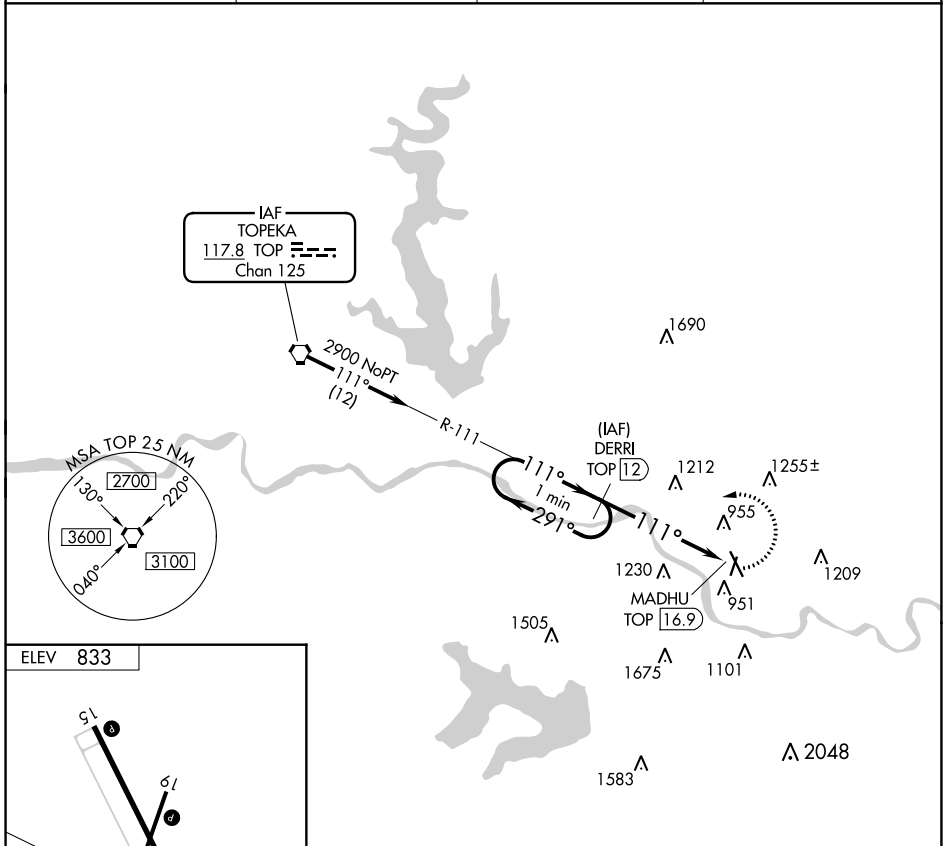
VORTAC TOP <b>117.8</b> Chan <b>125</b>	APP CRS <b>111°</b>	Rwy Idg TDZE Apt Elev	<b>N/A</b> <b>N/A</b> <b>833</b>
---	------------------------	-----------------------------	--

**VOR/DME-A**  
LAWRENCE RGNL (LWC)

**⚠** When local altimeter setting not received, use Philip Billard Muni altimeter setting and increase all MDA 60 feet and Cat C visibility ¼ mile.

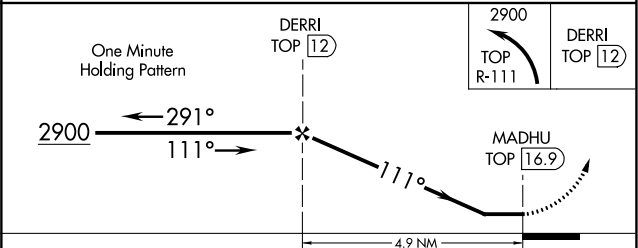
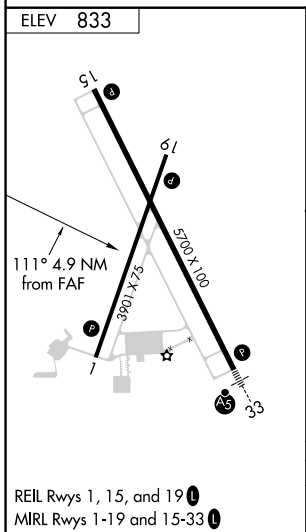
MISSED APPROACH: Climbing left turn to 2900 via TOP R-111 to DERRI/12 DME and hold.

ASOS <b>121.225</b>	KANSAS CITY CENTER <b>123.8 343.7</b>	CLNC DEL <b>121.825</b>	UNICOM <b>123.0 (CTAF) 0</b>
------------------------	--	----------------------------	---------------------------------



NC-2, 22 FEB 2024 to 21 MAR 2024

NC-2, 22 FEB 2024 to 21 MAR 2024



CATEGORY	A	B	C	D
CIRCLING	1480-1	647 (700-1)	1620-2¼ 787 (800-2¼)	NA