

WAAS CH 93621 W32A	APP CRS 322°	Rwy Idg 4313 TDZE 43 Apt Elev 44
--	------------------------	---

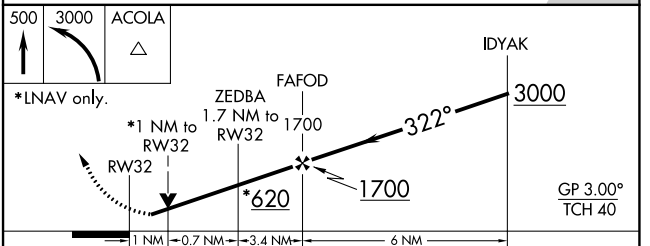
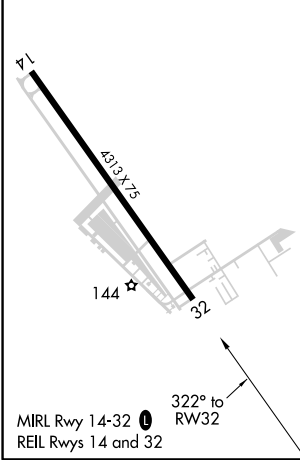
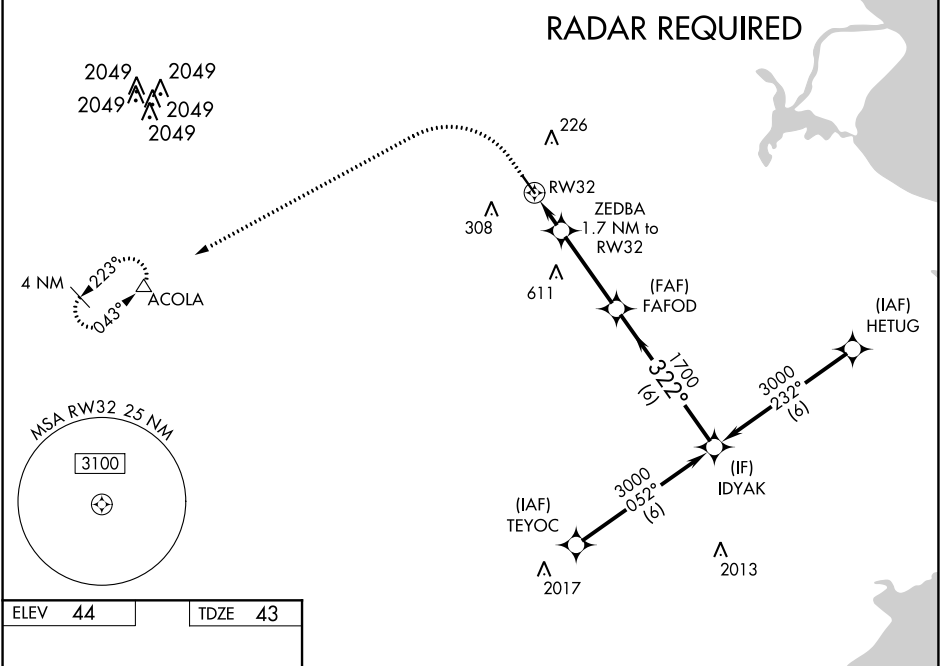
RNAV (GPS) RWY 32

PEARLAND RGNL (L V J)

⚠ Circling to Rwy 14 NA at night. For uncompensated Baro-VNAV systems, LNAV/VNAV NA below -1°C (31°F) or above 54°C (130°F). When local altimeter setting not received, use William P Hobby altimeter setting and increase all DA 18 feet and all MDA 20 feet, increase LNAV/VNAV visibilities all Cats 1/8 mile. VDP and Baro-VNAV NA when using William P Hobby altimeter setting. DME/DME RNP-0.3 NA. Helicopter visibility reduction below 3/4 SM NA.

MISSED APPROACH: Climb to 500 then climbing left turn to 3000 direct ACOLA and hold.

ASOS 118.525	HOUSTON APP CON 134.45 284.0	CLNC DEL 124.0	UNICOM 122.725 (CTAF) 0
------------------------	--	--------------------------	-----------------------------------



CATEGORY	A	B	C	D
LPV DA	293-7/8	250 (300-7/8)		NA
LNAV/VNAV DA	310-7/8	267 (300-7/8)		NA
LNAV MDA	400-1	357 (400-1)		NA
C CIRCLING	500-1 456 (500-1)	660-1 616 (700-1)		NA

SC-5, 09 SEP 2021 to 07 OCT 2021

SC-5, 09 SEP 2021 to 07 OCT 2021