

LAS VEGAS, NEVADA

HI-ILS or LOC Z RWY 21L

LOC I-DIQ 109.1	APCH CRS 209°	Rwy Idg	21L	21R
		TDZE	10,051	10,120
		Arprt Elev	1865	1869

AL-227 (USAF)

NELLIS AFB (KLSV)

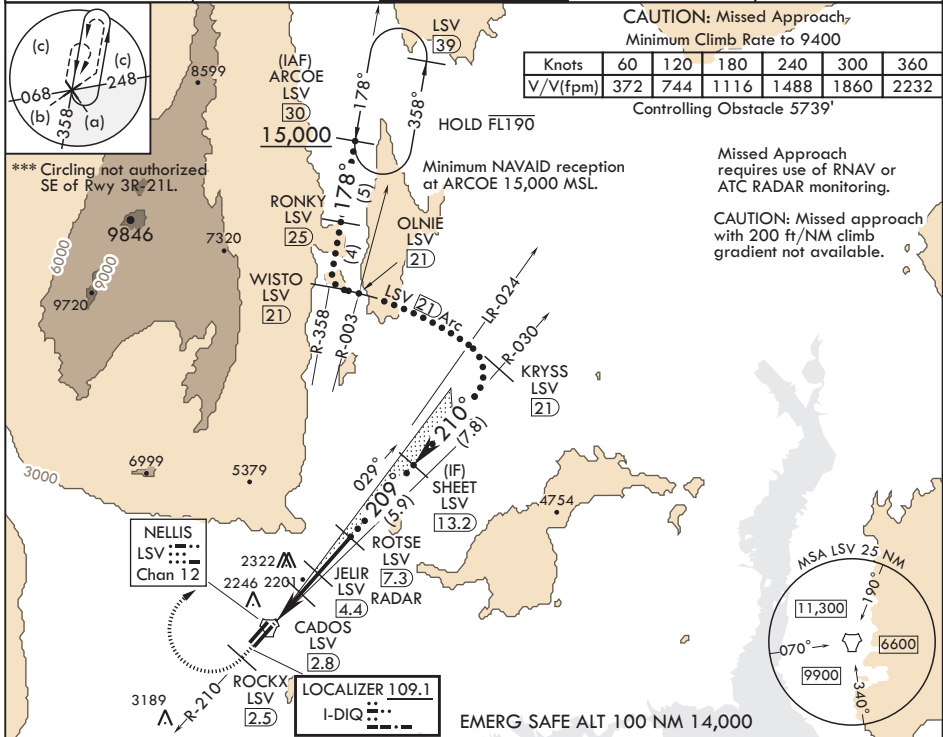
DME or RADAR required.

V * When ALS inop, increase RVR to 40, vis to 3/4 mile.
 ** When ALS inop, increase vis to 1 3/8 miles.



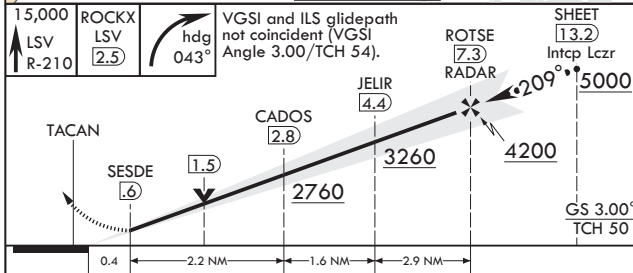
MISSED APPROACH: Climb to 15,000, intercept LSV TACAN R-210 to 2.5 DME (ROCKX), then climbing right turn heading 043° to intercept LSV R-358 to ARCOE and hold, climb in hold to 15,000. Missed approach not for civil use.

ATIS 270.1	APP CON 124.95 273.55	TOWER 132.55 327.0	GND CON 121.8 275.8	CLNC DEL 120.9 289.4
----------------------	---------------------------------	------------------------------	-------------------------------	--------------------------------



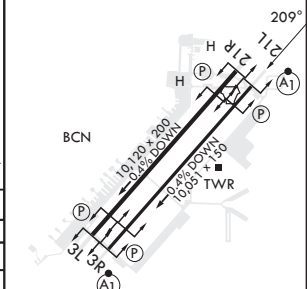
SW-4, 22 FEB 2024 to 21 MAR 2024

SW-4, 22 FEB 2024 to 21 MAR 2024



ELEV 1869	TDZE 21L 1865
	TDZE 21R 1869

↑ LSV R-210	ROCKX LSV 2.5	↑ hdg 043°	
TACAN			
SESDE 1.6			
CADOS 2.8			
JELIR 4.4			
ROTSE 7.3			
SHEET 13.2			
Intep Lczz 5000			
GS 3.00° TCH 50			
CATEGORY	C	D	E
S-ILS 21L*	2065/24	200	(200-1/2)
S-LOC 21L**	2360/50	495	(500-1)
SIDESTEP 21R	2380-1 1/8	511	(600-1)
C CIRCLING***	2560-2 691 (700-2)	2840-3 971 (1000-3)	3140-3 1271 (1300-3)



LAS VEGAS, NEVADA

36°14'N - 115°02'W

NELLIS AFB (KLSV)

Amdt 10 10AUG23

HI-ILS or LOC Z RWY 21L

LAS VEGAS, NEVADA

HI-TACAN RWY 3R

TACAN LSV Chan 12	APCH CRS 029°	Rwy ldg TDZE 10,051 Arprt Elev 1833 1869
-------------------	---------------	--

AL-227 (USAF)

NELLIS AFB (KLSV)

RADAR required.

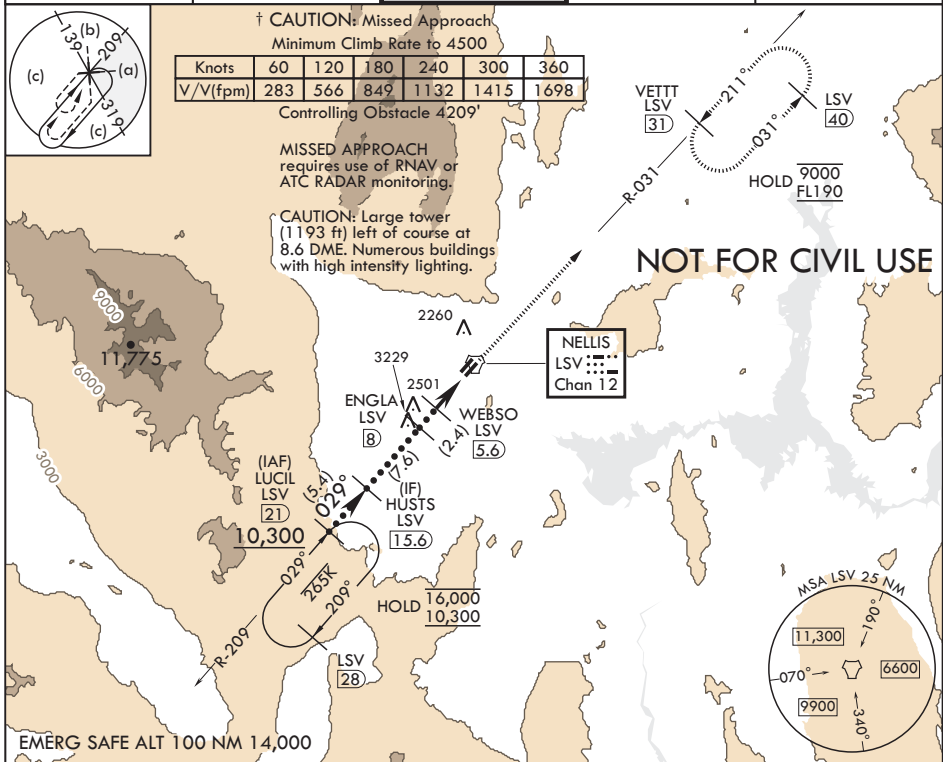
⚠ * When ALS inop, increase vis to 1 3/8 miles.
** Circling NA SE of Rwy 3R-21L.

ALSF-1



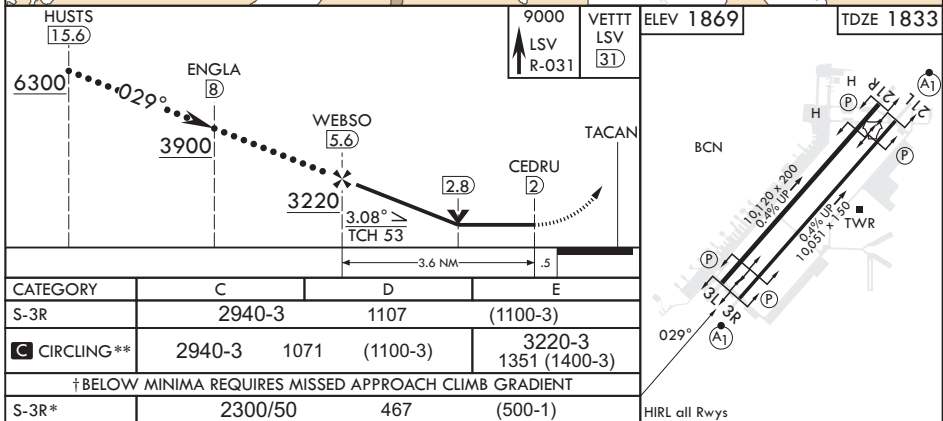
MISSED APPROACH: Climb to 9000 on LSV TACAN R-031 to VETT and hold.

ATIS 270.1	APP CON 124.95 273.55	TOWER 132.55 327.0	GND CON 121.8 275.8	CLNC DEL 120.9 289.4
------------	-----------------------	--------------------	---------------------	----------------------



SW-4, 22 FEB 2024 to 21 MAR 2024

SW-4, 22 FEB 2024 to 21 MAR 2024



LAS VEGAS, NEVADA

36°14'N - 115°02'W

NELLIS AFB (KLSV)

Amdt 10 10AUG23

HI-TACAN RWY 3R

HI-TACAN Y RWY 21L

AL-227 [USAF]

NELLIS AFB (KLSV)

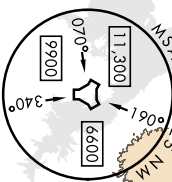
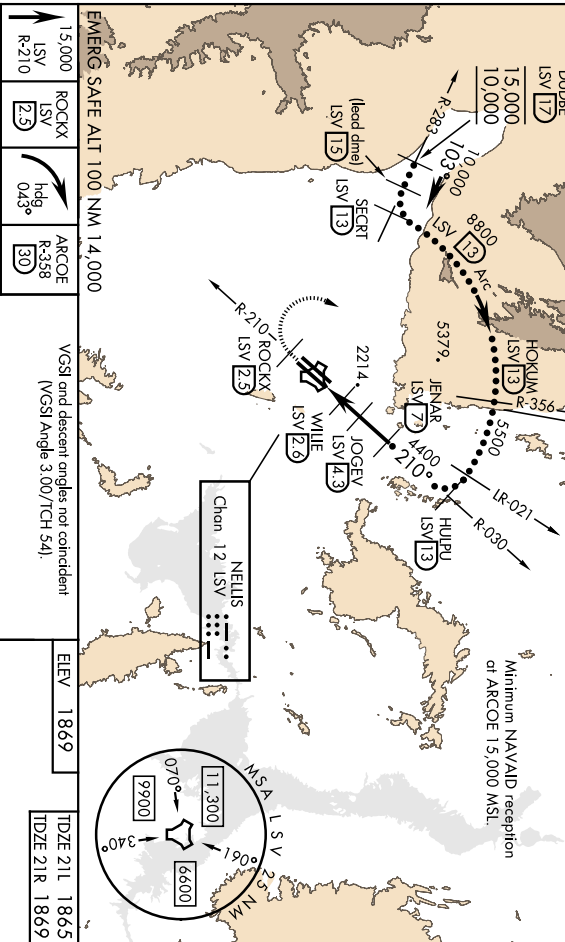
TACAN LSV Chan 12	APCH CRS 210°	Pub'd Ileg 211 10 051 TDZE 1865 App'l Elev 1869	Rwy Ileg 21R 10 120 TDZE 1869
<p>▲ When ALS Inop, increase CAT CDE vis to 1½ miles. ** Circling not authorized SE of Rwy 3R-21L.</p>		ALS-F1 A	<p>MISSED APPROACH: Climb to 15,000, intercept LSV TACAN R-210 to 2.5 DME (ROCKX), then climbing right turn heading 049° to intercept LSV R-358 to ARCOE and hold, climb in hold to 15,000. Missed approach not for CMI use.</p>
ATIS 270.1	APP CON 124.95 273.55	TOWER 122.55 327.0	GND CON 121.8 275.8
		CINC DEL 120.9 289.4	

CAUTION: Missed approach with 200 ft/NM climb gradient not available.

MISSED APPROACH requires use of RNAV or ATC RADAR monitoring.

Knots	60	120	180	240	300	360
V/V (ft/min)	364	728	1092	1456	1820	2184

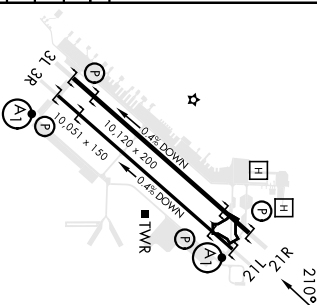
Min climb of 364 ft/NM to 9400 - Controlling Obstacle 5739



15,000 LSV R-210	ROCKX LSV 25	ARCOC R-358 30	ELEV 1869	TDZE 211 1865
	149 043			TDZE 21R 1869

CATEGORY	C	D	E
S-21L *	2440-1½	575	(600-1¼)
SIDESTEP 21R	2440-1½	571	(600-1½)
CIRCLING **	2560-2 691 (700-2)	2840-3 971 (1000-3)	3140-3 1271 (1300-3)

HIRL all rwys	NELLIS AFB (KLSV)
---------------	-------------------



HI-TACAN Z RWY 21L

TACAN LSV	APCH CRS	Runw Ldg 21L 10 051	Runw Ldg 21R 10 120
Chon 12	210°	TDZE 1865	TDZE 1869
		Appl Elev 1869	

AL-227 (USAF)

NELLIS AFB (KLSV)

▲ * When A1S stop, increase CAT CDE vis to 1 $\frac{1}{2}$ miles.
****** Circling not authorized SE of Rwy 3R-21L.

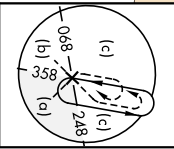
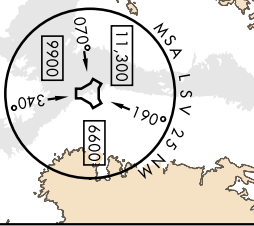
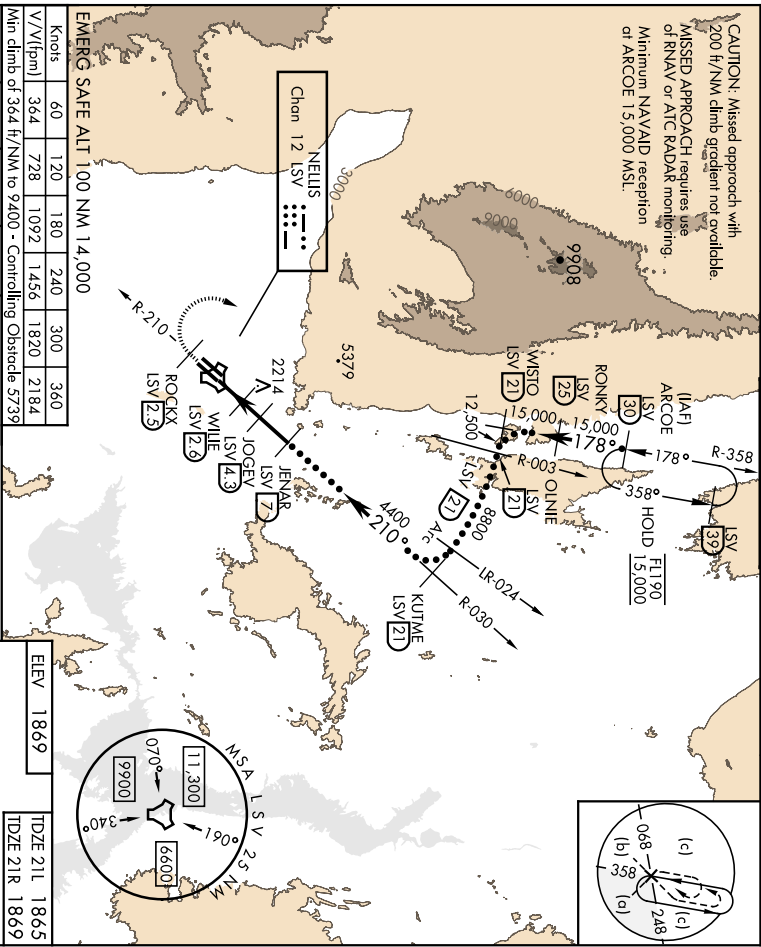


MISSED APPROACH: Climb to 1,500, intercept LSV TACAN R-210 to 2.5 DME (ROCKX), then climbing right turn heading 043° to intercept LSV R-358 to ARCOE and hold, climb in hold to 1,500. Missed approach not for drill use.

ALIS	APP CON	TOWER
270.1	124.95 273.55	132.55 327.0

GND CON	CINC DEL
121.8 275.8	120.9 289.4

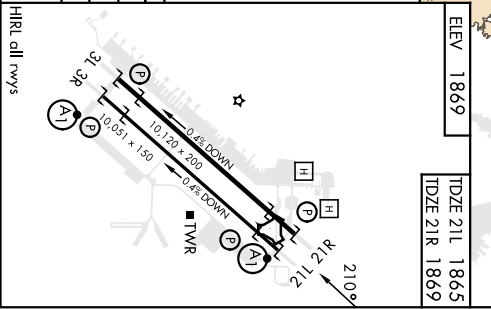
CAUTION: Missed approach with 200 ft/NM climb gradient not available.
MISSED APPROACH: requires use of RNAV or ATC RADAR monitoring. Minimum NAVDAD reception of ARCOE 15,000 MSL.



EMERG SAFE ALT 100 NM 14,000

Knots	60	120	180	240	300	360
V/V(ft/min)	364	728	1092	1456	1820	2184
Min climb of 364 ft/NM to 9400 - Controlling Obstacle - 5739						
15,000 LSV R-210	ROCKX LSV (25)	hdg 043°	ARCOE R-358 (30)	VCST and descent angles not pertinent (VGS1 Angle 3.00/CH 54)		

CATEGORY	C	D	E
	1.06 ← 1.3 NM ← 1.7 NM ← 2.7 NM ←		
S-21L *	2440-1 $\frac{1}{2}$	575 (600-1 $\frac{1}{4}$)	
SIDESTEP 21R	2440-15%	571 (600-15%)	
CIRCLING **	2560-2	2840-3	3140-3
	691 (700-2)	971 (1000-3)	1271 (1300-3)



LAS VEGAS, NEVADA
 36°14'N-115°02'W
 LAS VEGAS, NEVADA
 36°14'N-115°02'W
 NELLIS AFB (KLSV)
 Amch 10 10AUG23

HI-TACAN Z RWY 21L

LAS VEGAS, NEVADA

ILS or LOC X RWY 21L

LOC I-DIQ 109.1	APCH CRS 209°	Rwy ldg TDZE Arpt Elev	21L 10,051 1865 1869	21R 10,120 1869
---------------------------	-------------------------	------------------------------	--	-------------------------------------

AL-227 (USAF)

NELLIS AFB (KLSV)

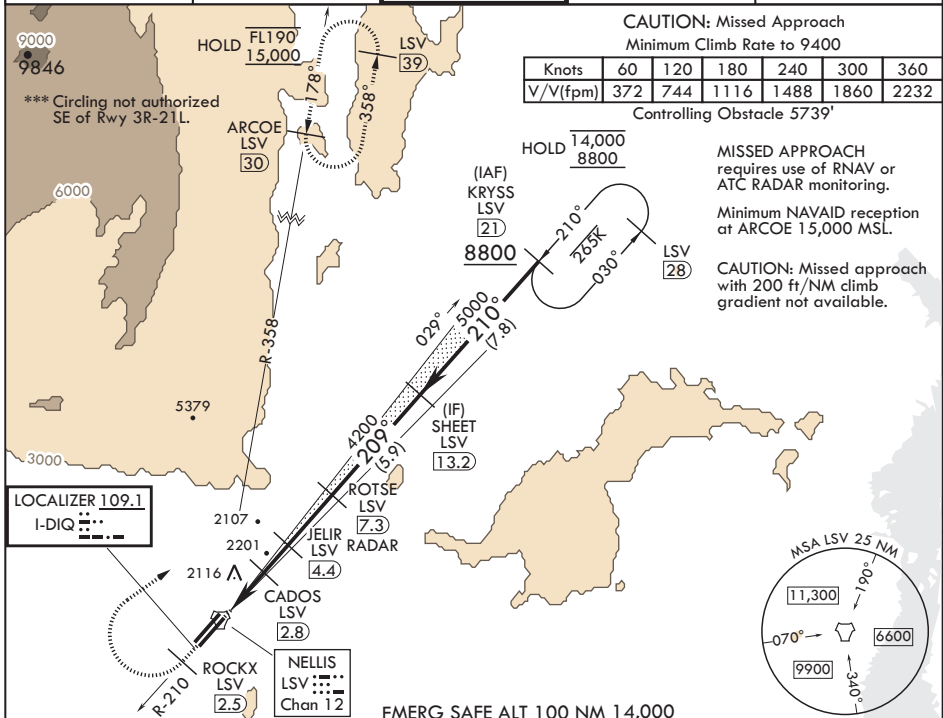
DME or RADAR required.

* When ALS inop, increase RVR to 40, vis to 3/4 mile.
 ** When ALS inop, increase CAT AB RVR to 55, vis to 1 mile, CAT CDE vis to 1 3/8 miles.



MISSED APPROACH: Climb to 15,000, intercept LSV TACAN R-210 to 2.5 DME (ROCKX), then climbing right turn heading 043° to intercept LSV R-358 to ARCOE and hold, climb in hold to 15,000. Missed approach not for civil use.

ATIS 270.1	APP CON 124.95 273.55	TOWER 132.55 327.0	GND CON 121.8 275.8	CLNC DEL 120.9 289.4
----------------------	---------------------------------	------------------------------	-------------------------------	--------------------------------



CAUTION: Missed Approach
 Minimum Climb Rate to 9400

Knots	60	120	180	240	300	360
V/V(fpm)	372	744	1116	1488	1860	2232

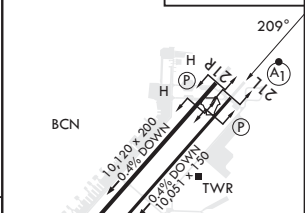
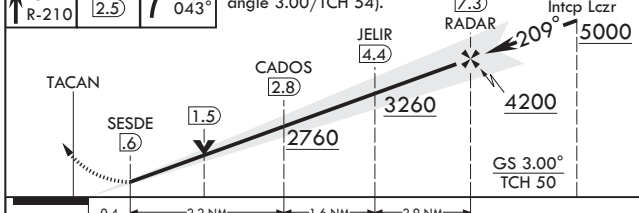
Controlling Obstacle 5739'

MISSED APPROACH requires use of RNAV or ATC RADAR monitoring.
 Minimum NAVaid reception at ARCOE 15,000 MSL.
CAUTION: Missed approach with 200 ft/NM climb gradient not available.

SW-4, 22 FEB 2024 to 21 MAR 2024

SW-4, 22 FEB 2024 to 21 MAR 2024

15,000 LSV R-210	ROCKX LSV (2.5)	hdg 043°	VGSI and ILS glidepath not coincident (VGSI angle 3.00/TCH 54).	ROTSE (7.3) RADAR	SHEET (13.2) Intep Lczt	ELEV 1869	TDZE 21L 1865 TDZE 21R 1869
------------------	-----------------	----------	---	-------------------	-------------------------	-----------	--------------------------------



CATEGORY	A	B	C	D	E
S-ILS 21L*	2065/24		200	(200-1/2)	
S-LOC 21L**	2360/24	495 (500-1/2)	2360/50	495	(500-1)
SIDESTEP 21R	2380-1	511 (600-1)	2380-1 3/8	511	(600-1 1/4)
CIRCLING***	2400-1 531 (600-1)	2460-1 591 (600-1)	2560-2 691 (700-2)	2840-3 971 (1000-3)	3140-3 1271 (1300-3)

HIRL all Rwy's

FAF to MAP 6.7 NM					
Knots	60	90	120	150	180
Min:Sec	6:42	4:28	3:21	2:41	2:14

LAS VEGAS, NEVADA
Amdt 11 10AUG23

36°14'N - 115°02'W

NELLIS AFB (KLSV)

ILS or LOC X RWY 21L

LOC Y Rwy 21L

AL-227 (USAF)

NELLIS AFB (KLSV)

RADAR or DME required.

▲ * When ALS hoop, increase vis to 1 $\frac{1}{2}$ miles.
 ** Circling not authorized SE of Rwy 3R-21L



MISSED APPROACH: Climb to 8000, intercept the LAS VORTAC R-018 to 10.3 DME (REEN), then to LAS and hold, continue climb in hold to 8000.

ATIS
270.1

APP CON
124.95 273.55

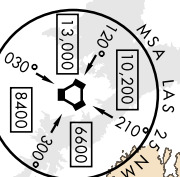
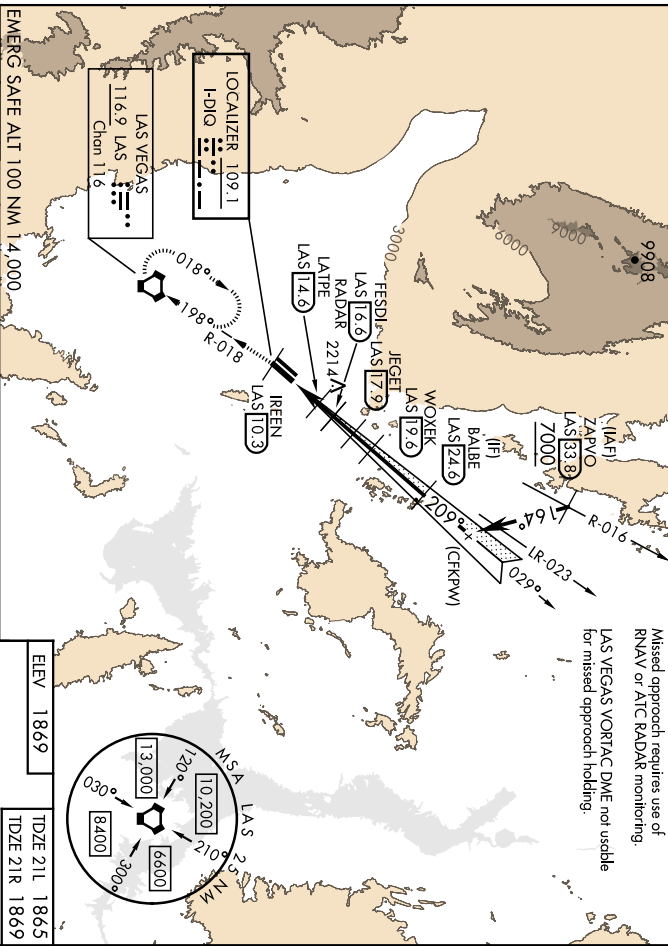
TOWER
132.55 327.0

GND CON
121.8 275.8

CINC DEL
120.9 289.4

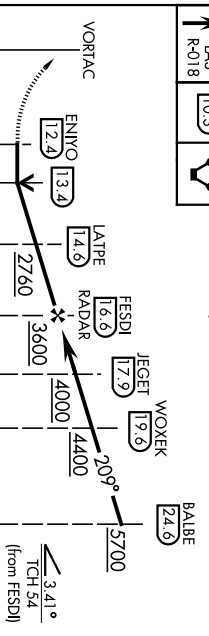
FOR USE BY NELLIS AFB ASSIGNED AIRCRAFT ONLY

Knobs	60	120	180	240	300	360
V/V(ftpm)	450	900	1350	1800	2250	2700
AIC climb of 450 ft/NM to 8000						



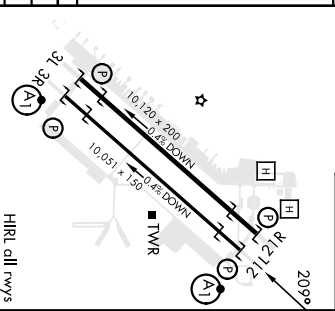
ELEV **1869** TDZE 21L **1865**
 TDZE 21R **1869**

8000
 R-018
 REEN 10.3 LAS
 IREEN LAS
 VGS1 and descent angles not coincident
 (VGS1 Angle 3.00/TCH 54).



CATEGORY	C	D	E
S-21L *	2360/50	495 (500-1)	
SIDESTEP 21R	2360-1 $\frac{1}{8}$	491 (500-1 $\frac{1}{8}$)	

CIRCLING **	2560-2	2840-3	3140-3
	691 (700-2)	971 (1000-3)	1271 (1300-3)



FAF to MAP 4.2 NM
 HIRL all w/VS

Knobs	60	90	120	150	180
Min/Sec	4:12	2:48	2:06	1:41	1:24

LAS VEGAS, NEVADA

36°14'N-115°02'W

Amch 9 10AUG23

NELLIS AFB (KLSV)
LOC Y Rwy 21L

SIN CITY VISUAL RWY 03L/R

NELLIS AFB (KLSV)
LAS VEGAS, NEVADA

AL-227 (USAF)
RADAR required

GASS PEAK
• 6943

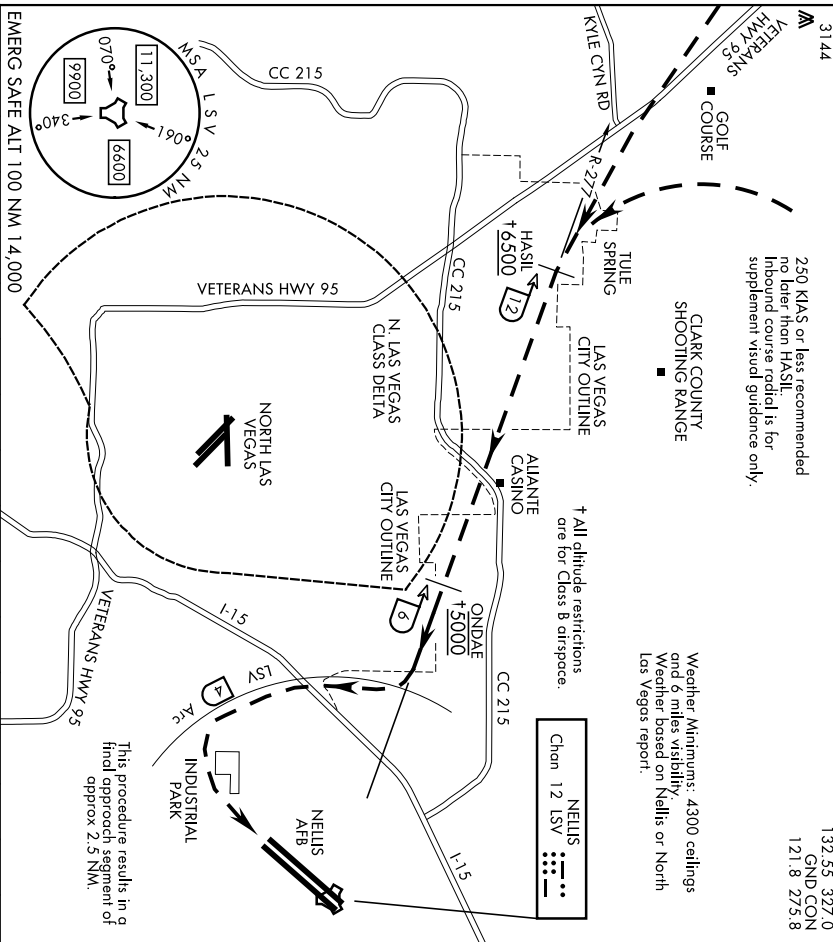
ATIS 270.1
APP CON 124.95 273.55
TOWER 132.55 327.0
GND CON 121.8 275.8

250 KIAS or less recommended
no later than HASIL
Inbound course radial is for
supplement visual guidance only.

Weather: Minimums: 4300 ceilings
and 6 feet visibility.
Weather based on Nellis or North
Las Vegas report.

† All altitude restrictions
are for Class B airspace.

NELLIS
Class 12 LSV



EMERG SAFE ALT 100 NM 14,000	1	2	3	4	5	6	7	8	9	10	11	12	13	14	15	16
------------------------------	---	---	---	---	---	---	---	---	---	----	----	----	----	----	----	----

SIN CITY VISUAL RWY 03L/R

Expect RADAR vectors to HASIL (LSV TACAN R-277 / 12 DME) and report Northwest Las Vegas city outline in sight (ATC Clearance - "Cleared Sin City Visual Rwy 03 Approach")
 Cross HASIL at or above 6500, proceed visually via LSV R-277 and descend to cross ONDAE at 5000.

Based on traffic conditions, ATC may assign a different DME and/or an altitude to maintain until established visually on LSV R-277; pilots shall advise ATC if unable to comply with the revised clearance and any remaining published altitude restrictions. - example: "Cleared Sin City Visual Rwy 03 Approach via 10 DME, maintain (altitude) until established inbound on LSV R-277".

Continue visual descent in right turn to join LSV TACAN 4 DME Arc until extended final Rwy 03. Make base turn to remain within 4 DME to protect against Las Vegas Approach airspace/traffic. Tower will assign either Rwy 03 L/R.

SIN CITY VISUAL RWY 03L/R

36°14'N-115°02'W

LAS VEGAS, NEVADA
NELLIS AFB (KLSV)

LAS VEGAS, NEVADA

TACAN X RWY 21L

TACAN LSV Chan 12	APCH CRS 210°
-------------------	---------------

Rwy Idg	21L 10,051	21R 10,120
TDZE	1865	1869
Arprt Elev	1869	

AL-227 (USAF)

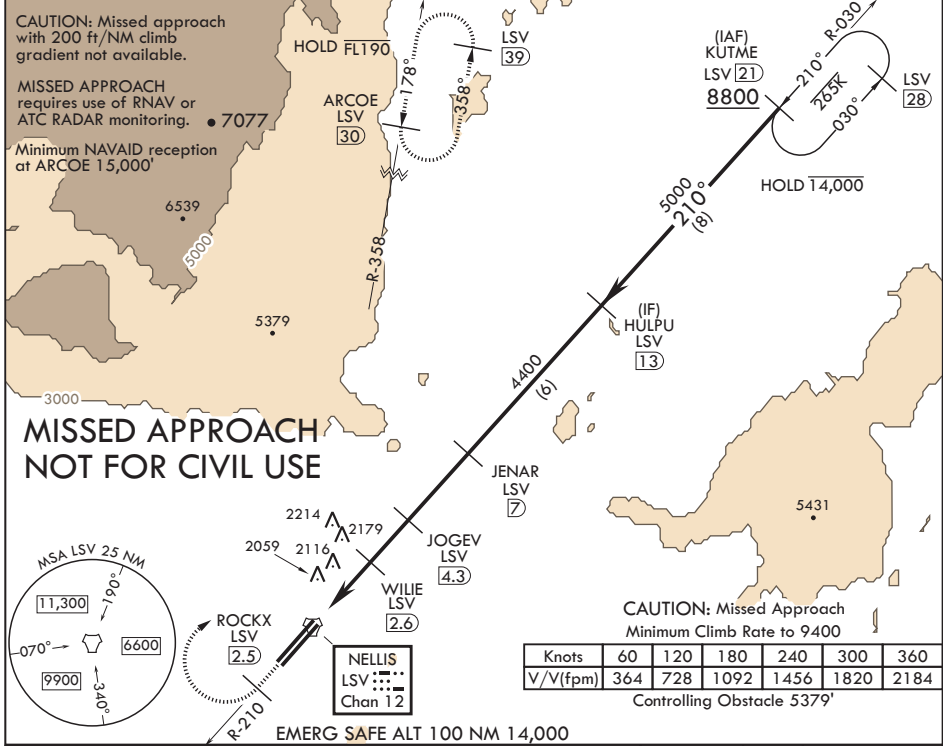
NELLIS AFB (KLSV)

V * When ALS inop, increase CAT AB RVR to 55, vis to 1 mile, CAT CDE vis to 1 5/8 miles.
 ** Circling not authorized SE of Rwy 3R-21L.



MISSED APPROACH: Climb to 15,000, intercept LSV TACAN R-210 to 2.5 DME (ROCKX), then climbing right turn heading 043° to intercept LSV R-358 to ARCOE and hold, climb in hold to 15,000. Missed approach not for civil use.

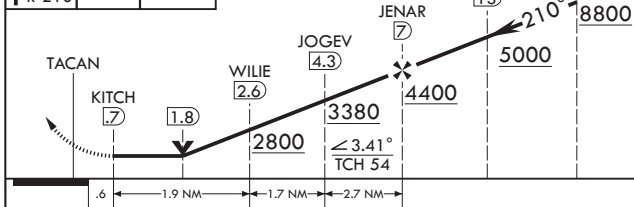
ATIS 270.1	APP CON 124.95 273.55	TOWER 132.55 327.0	GND CON 121.8 275.8	CLNC DEL 120.9 289.4
----------------------	---------------------------------	------------------------------	-------------------------------	--------------------------------



15,000 LSV R-210	ROCKX LSV (2.5)
------------------	-----------------

EMERG SAFE ALT 100 NM 14,000
 VGSI and descent angles not coincident (VGSI Angle 3.00/TCH 54).

ELEV 1869	TDZE 21L 1865	TDZE 21R 1869
-----------	---------------	---------------



CATEGORY	A	B	C	D	E
S-21L*	2440/24 575 (600-½)		2440-1¼ 575 (600-1¼)		
SIDESTEP 21R	2440-1 571 (600-1)		2440-1⅝ 571 (600-1⅝)		
C CIRCLING**	2440-1 571 (600-1)	2460-1 591 (600-1)	2560-2 691 (700-2)	2840-3 971 (1000-3)	3140-3 1271 (1300-3)

HIRL all Rwys

LAS VEGAS, NEVADA
 Amdt 10 10AUG23

36°14'N - 115°02'W

NELLIS AFB (KLSV)

TACAN X RWY 21L

SW-4, 22 FEB 2024 to 21 MAR 2024

SW-4, 22 FEB 2024 to 21 MAR 2024