

| | | | |
|--|------------------------|-----------------------------|---|
| WAAS CH 53715 W14A | APP CRS 137° | Rwy Idg TDZE Apt Elev | 3801 121 121 |
|--|------------------------|-----------------------------|---|

RNAV (GPS) RWY 14

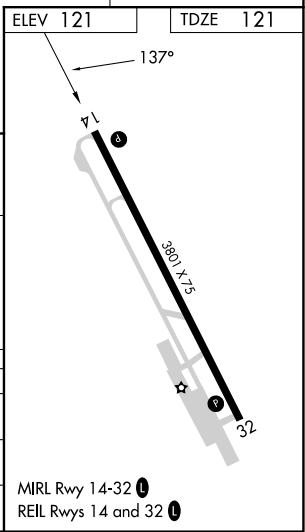
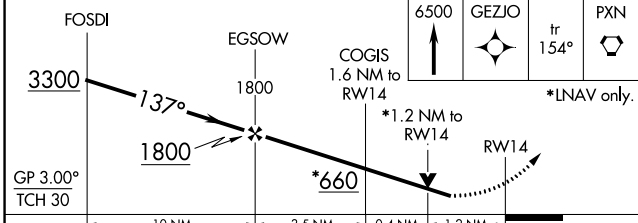
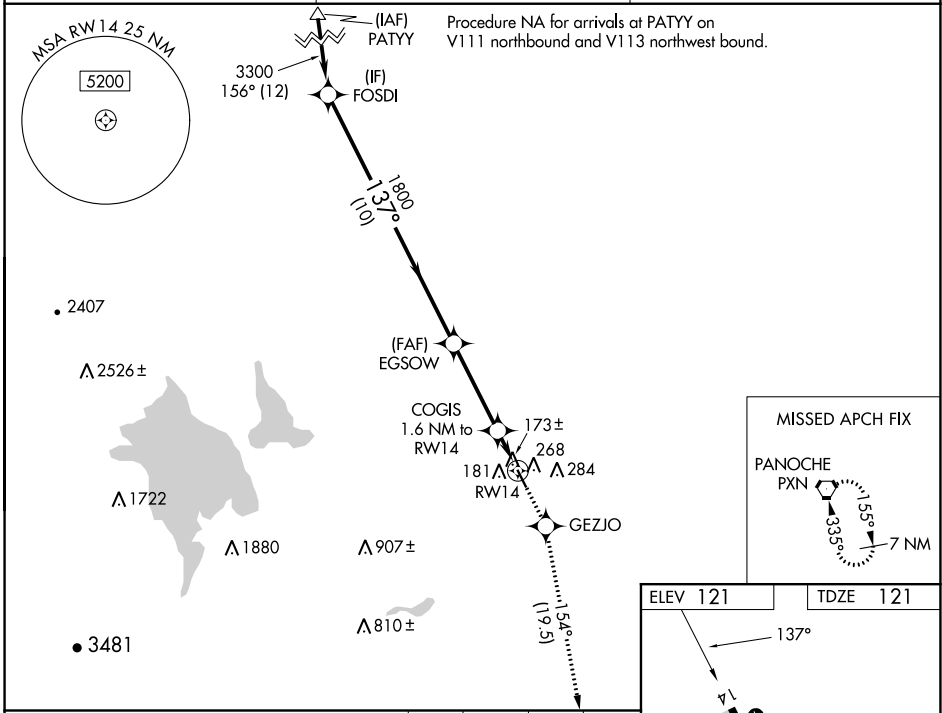
LOS BANOS MUNI (LSN)

RNP APCH.

NA Rwy 14 helicopter visibility reduction below ¼ SM NA. Baro-VNAV and VDP NA when using Merced Yosemite Rgnl altimeter setting. For uncompensated Baro-VNAV systems, LNAV/VNAV NA below -15°C or above 54°C. When local altimeter setting not received, use Merced Yosemite Rgnl altimeter setting and increase all DA/MDA 60 feet, and all visibility ¼ SM.

MISSED APPROACH: Climb to 6500 direct GEZJO and on track 154° to PXN VORTAC and hold, continue climb-in-hold to 6500.

| | | |
|--------------------------|--|--|
| AWOS-3 118,675 | NORCAL APP CON 120.95 269,45 | UNICOM 122.8 (CTAF) U |
|--------------------------|--|--|



| CATEGORY | A | B | C | D |
|--------------|-------------------|---|---------------------|---------------------|
| LPV DA | 455-1¼ | | 334 (400-1¼) | |
| LNAV/VNAV DA | 519-1½ | | 398 (400-1½) | |
| LNAV MDA | 520-1 399 (400-1) | | 520-1½ 399 (400-1½) | 520-1¼ 399 (400-1¼) |

SW-2, 22 FEB 2024 to 21 MAR 2024

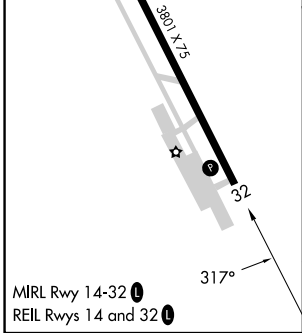
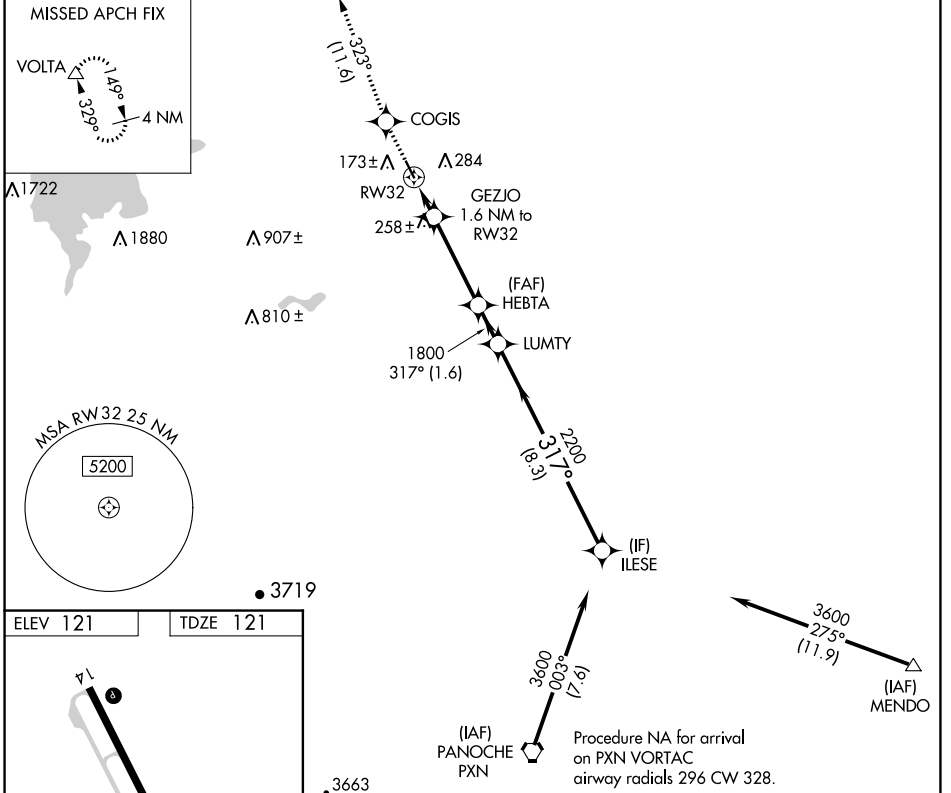
SW-2, 22 FEB 2024 to 21 MAR 2024

| | |
|------------------------|---|
| APP CRS 317° | Rwy Idg 3801 TDZE 121 Apt Elev 121 |
|------------------------|---|

RNAV (GPS) RWY 32

LOS BANOS MUNI (LSN)

| | | |
|---|--|--|
| RNP APCH. | | MISSED APPROACH: Climb to 3000 direct COGIS and on track 323° to VOLTA and hold. |
| <p>▼ Rwy 32 helicopter visibility reduction below 3/4 SM NA. VDP NA when using Merced Yosemite Rgnl altimeter setting. When local altimeter setting not received, use Merced Yosemite Rgnl altimeter setting and increase all MDA 60 feet, and all visibility 1/4 SM.</p> <p>▲ NA</p> | | |
| AWOS-3 118.675 | NORCAL APP CON 120.95 269.45 | UNICOM 122.8 (CTAF) 0 |



| | | | | |
|----------|----------------------|--------|---------------------------|--------|
| 3000 | COGIS | VOLTA | ILESE | |
| ↑ | ✧ | △ | | |
| | fr 323° | | | |
| | GEZJO 1.6 NM to RW32 | HEBTA | LUMTY | ILESE |
| | RW32 | RW32 | 1800 | 2200 |
| | 1.1 NM | 0.5 NM | 3.6 NM | 1.6 NM |
| | | | 3.00° TCH 38 | 8.3 NM |
| CATEGORY | A | B | C | D |
| LNAV MDA | 520-1 399 (400-1) | | 520-1 1/8 399 (400-1 1/8) | |

SW-2, 22 FEB 2024 to 21 MAR 2024

SW-2, 22 FEB 2024 to 21 MAR 2024