

LOC I-LKU 108.55	APP CRS 272°	Rwy Idg TDZE Apt Elev	4300 494 494
----------------------------	------------------------	-----------------------------	---

LOC RWY 27

LOUISA COUNTY/FREEMAN FIELD (LKU)

DME required.

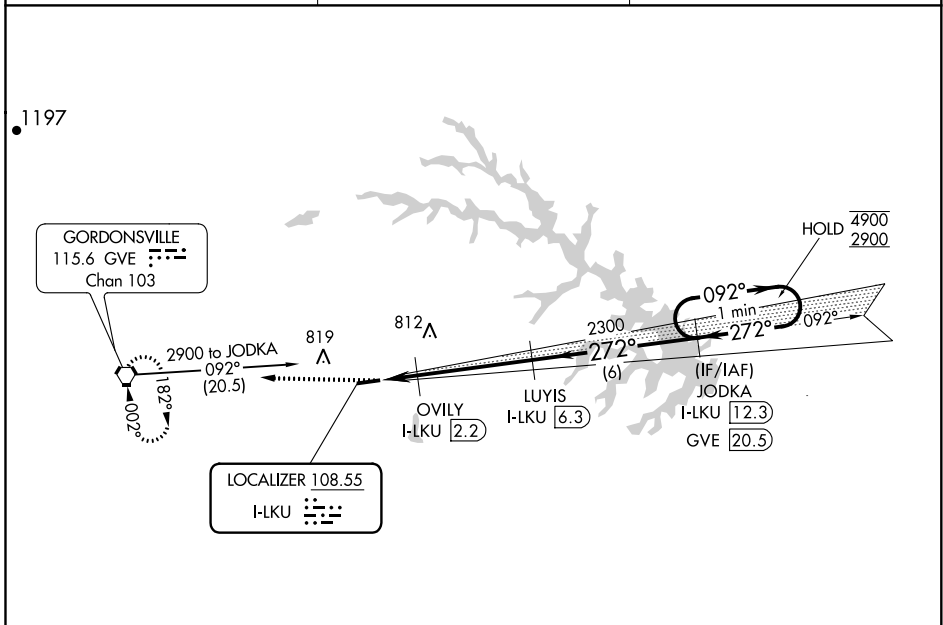
▽ **△** NA Circling NA north of Rwy 9-27. When local altimeter setting not received, use Orange altimeter setting and increase all MDA 40 feet. VDP NA when using Orange altimeter setting.

MISSED APPROACH:
Climb to 2900 direct
GVE VORTAC and hold.

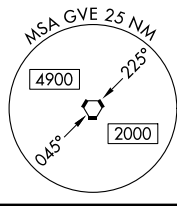
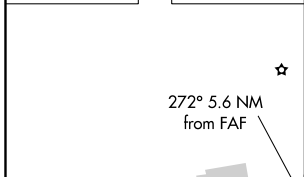
AWOS-3
119.475

POTOMAC APP CON
132.85 323.125

UNICOM
122.975 (CTAF) 0



ELEV 494	TDZE 494
----------	----------



	2900	GVE		JODKA I-LKU [12.3]	One Minute Holding Pattern
			OVILY I-LKU [2.2]	LUYIS I-LKU [6.3]	
			I-LKU [0.8]	I-LKU [1.7]	
			980	2300	
			0.9 NM	0.5 NM	4.2 NM
CATEGORY	A	B	C	D	
S-LOC 27	820-1	326 (400-1)	NA	NA	
C CIRCLING	900-1 406 (500-1)	960-1 466 (500-1)	NA	NA	

NE-3, 17 JUN 2021 to 15 JUL 2021

NE-3, 17 JUN 2021 to 15 JUL 2021

WAAS CH 58318 W27A	APP CRS 272°	Rwy Idg TDZE 494 Apt Elev 494
--	------------------------	---

RNAV (GPS) RWY 27

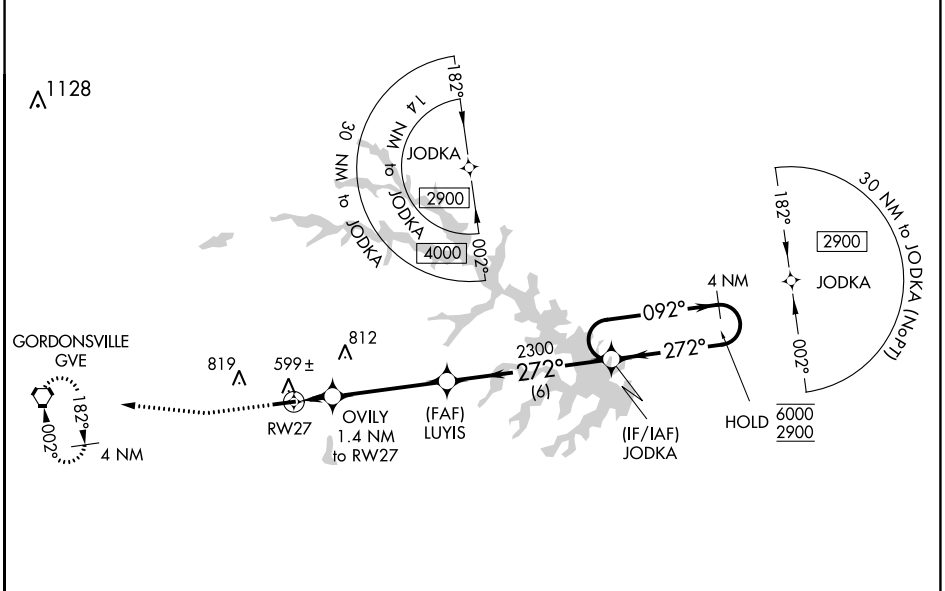
LOUISA COUNTY/FREEMAN FIELD (LKU)

RNP APCH

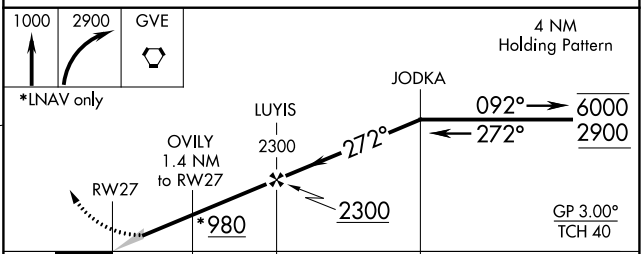
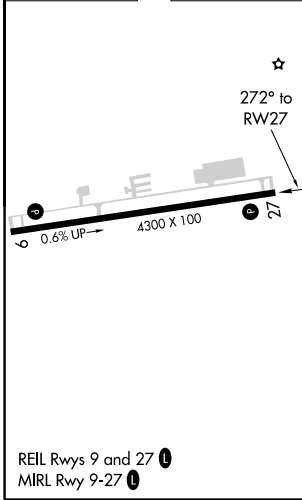
⚠ Circling NA north of Rwy 9-27. Baro-VNAV NA when using Orange altimeter setting. For uncompensated Baro-VNAV systems, LNAV/VNAV NA below -15°C or above 54°C. When local altimeter setting not received, use Orange altimeter setting and increase all DA to 780 feet and all MDA 40 feet and increase LPV and LNAV/VNAV visibility $\frac{1}{8}$ SM.

MISSED APPROACH: Climb to 1000 then climbing right turn to 2900 direct GVE VORTAC and hold, continue climb-in-hold to 2900.

AWOS-3 119.475	POTOMAC APP CON 132.85 323.125	UNICOM 122.975 (CTAF) 0
--------------------------	--	-----------------------------------



ELEV 494	TDZE 494
-----------------	-----------------



CATEGORY	A	B	C	D
LPV DA	744- $\frac{3}{4}$	250 (300- $\frac{3}{4}$)		NA
LNAV/VNAV DA	744- $\frac{3}{4}$	250 (300- $\frac{3}{4}$)		NA
LNAV MDA	860-1	366 (400-1)		NA
CIRCLING	900-1	960-1		
	406 (500-1)	466 (500-1)		NA

NE-3, 17 JUN 2021 to 15 JUL 2021

NE-3, 17 JUN 2021 to 15 JUL 2021

WAAS CH 48843 W09A	APP CRS 092°	Rwy Idg 4300 TDZE 489 Apt Elev 494
--	------------------------	---

RNAV (GPS) RWY 9

LOUISA COUNTY/FREEMAN FIELD (LKU)

RNP APCH.

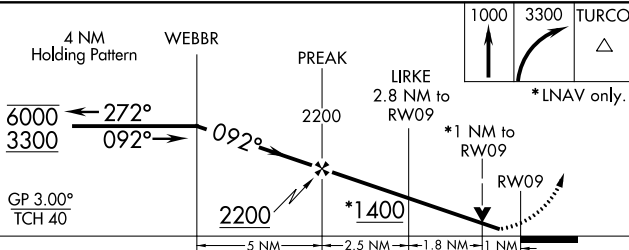
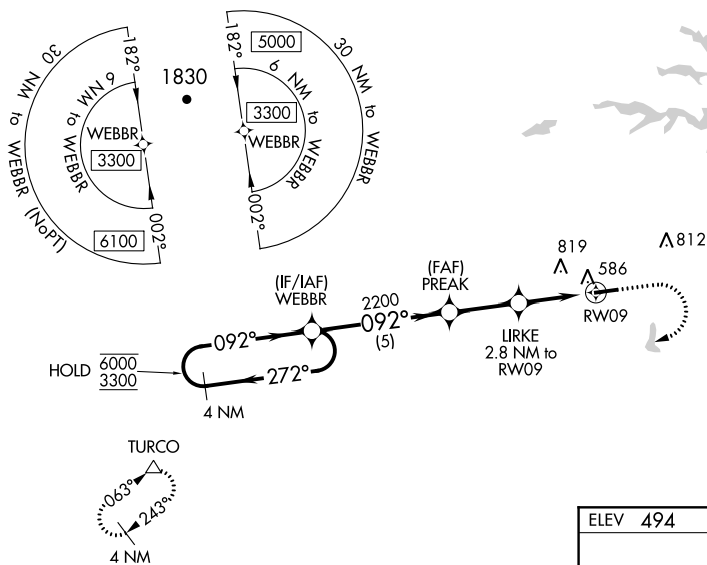
▼ Circling NA north of Rwy 9-27. Rwy 9 helicopter visibility reduction below 3/4 SM NA.
 ▲ For uncompensated Baro-VNAV systems, LNAV/VNAV NA below -15°C or above 54° C.
 When local altimeter setting not received, use Orange altimeter setting and increase LPV DA to 775 feet, LNAV/VNAV DA to 784 feet and MDA 40 feet; increase LPV and LNAV/VNAV visibility 1/2 SM. Baro-VNAV and VDP NA when using Orange altimeter setting.

MISSED APPROACH: Climb to 1000 then climbing right turn to 3300 direct TURCO and hold.

AWOS-3
119.475

POTOMAC APP CON
132.85 323.125

UNICOM
122.975 (CTAF) **1**



ELEV 494	TDZE 489
----------	----------

REIL Rwy 9 and 27 **1**
MIRL Rwy 9-27 **1**

CATEGORY	A	B	C	D
LPV DA	739-3/4	250 (300-3/4)		NA
LNAV/VNAV DA	748-3/4	259 (300-3/4)		NA
LNAV MDA	840-1	351 (400-1)		NA
CIRCLING	900-1	960-1		
	406 (500-1)	466 (500-1)		NA

NE-3, 17 JUN 2021 to 15 JUL 2021

NE-3, 17 JUN 2021 to 15 JUL 2021