

NDB LCQ 204	APP CRS 287°	Rwy ldg TDZE Apt Elev	8003 196 201
-----------------------	------------------------	-----------------------------	---

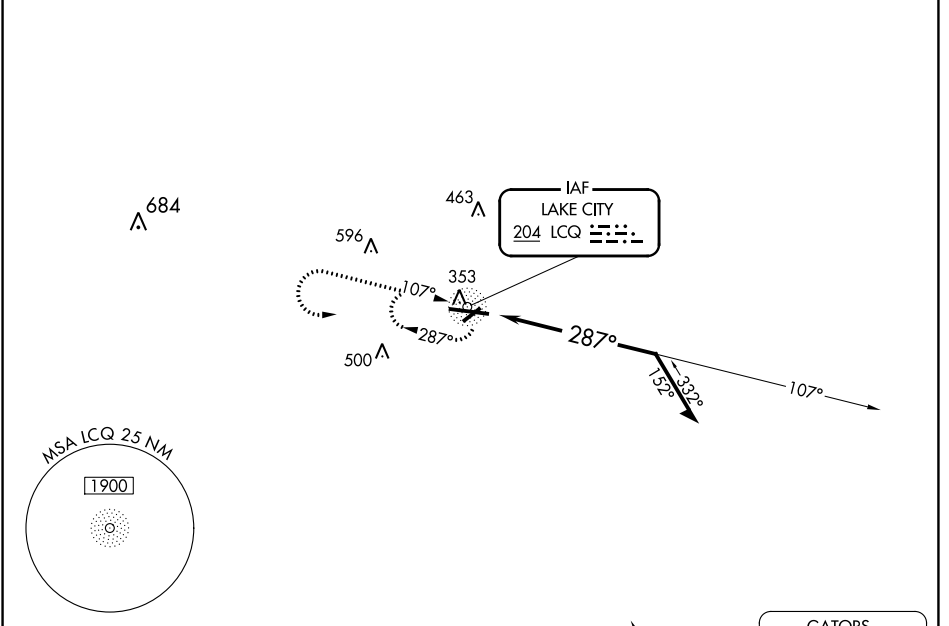
NDB RWY 28

LAKE CITY GATEWAY (LCQ)

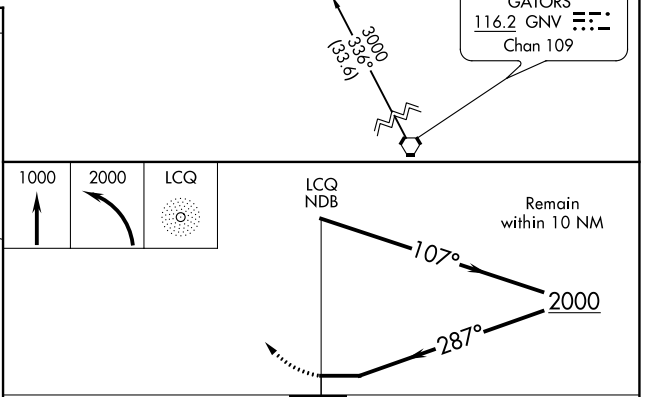
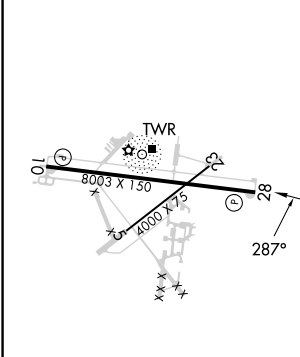
▼ Circling to Rwy 10 NA at night. When local altimeter setting not received, use Gainesville altimeter setting and increase all MDA 100 feet, and increase S-28 Cats C/D and Circling Cat C visibility ¼ mile.
▲ NA Helicopter visibility reduction below ¼ SM not authorized.

MISSED APPROACH: Climb to 1000 then climbing left turn to 2000 direct LCQ NDB LOM and hold.

AWOS-3 120.675	JACKSONVILLE CENTER 125.375 254.325	LAKE CITY TOWER ★ 119.2 (CTAF) 0 314.6	GND CON 121.9	UNICOM 122.95
--------------------------	---	--	-------------------------	-------------------------



ELEV 201	TDZE 196
----------	----------



CATEGORY	A	B	C	D
S-28	760-1 564 (600-1)		760-1½ 564 (600-1½)	
CIRCLING	760-1 559 (600-1)		760-1½ 559 (600-1½)	760-2 559 (600-2)

SE-3, 22 FEB 2024 to 21 MAR 2024

SE-3, 22 FEB 2024 to 21 MAR 2024

RNAV (GPS) RWY 10

LAKE CITY GATEWAY (LCQ)

APP CRS	Rwy Idg	8003
100°	TDZE	201
	Apt Elev	201

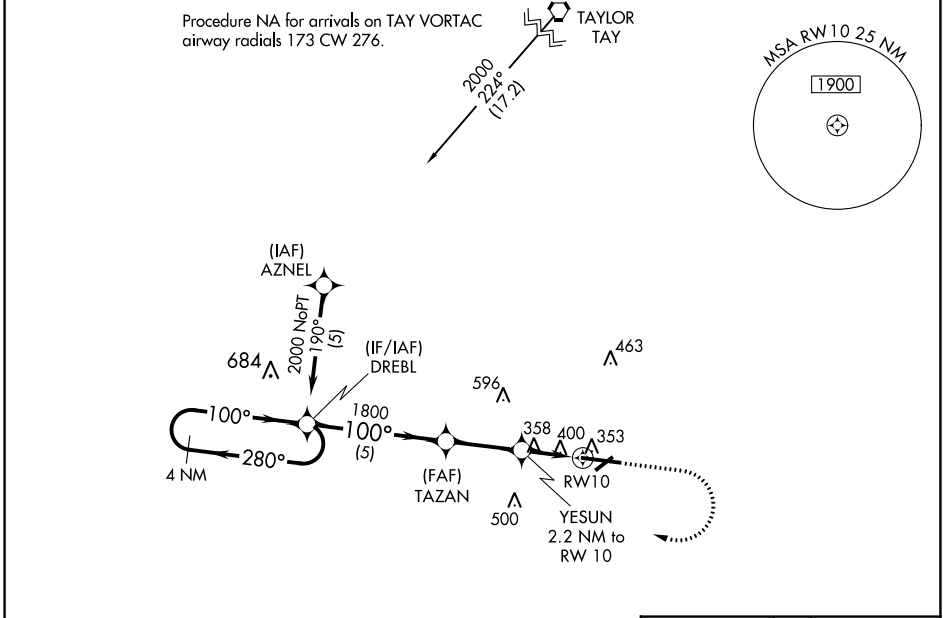
RNP APCH-GPS.

▼ When local altimeter setting not received, use Gainesville altimeter setting: Increase all MDAs 100 feet; increase LNAV Cat C/D visibility 3/8 SM and Circling Cat C visibility 1/2 SM and Cat D 1/4 SM. Procedure NA at night. Rwy 10 helicopter visibility reduction below 1 SM NA.

▲

MISSED APPROACH: Climb to 800 then climbing right turn to 2000 direct DREBL and hold.

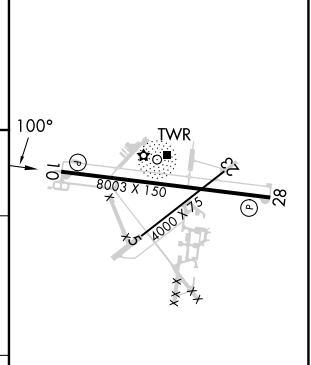
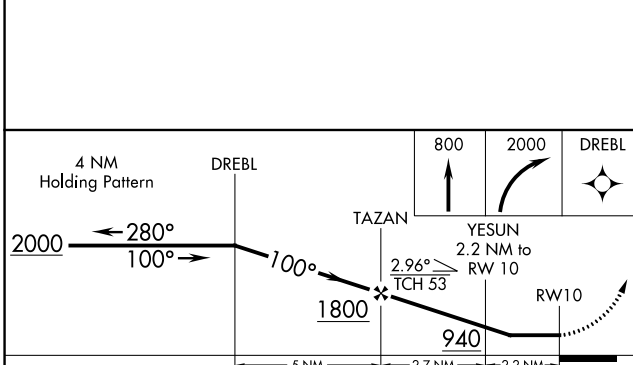
AWOS-3 120,675	JACKSONVILLE CENTER 125,375 254,325	LAKE CITY TOWER * 119.2 (CTAF) 0 314.6	GND CON 121.9	UNICOM 122.95
--------------------------	---	--	-------------------------	-------------------------



SE-3, 22 FEB 2024 to 21 MAR 2024

SE-3, 22 FEB 2024 to 21 MAR 2024

ELEV 201	TDZE 201
----------	----------



CATEGORY	A	B	C	D
LNAV MDA	700-1	499 (500-1)	700-1 3/8	499 (500-1 3/8)
CIRCLING	760-1	559 (600-1)	780-1 1/2 579 (600-1 1/2)	960-2 1/2 759 (800-2 1/2)

REIL Rwy 10 and 28 **0**

MIRL Rwy 5-23 and 10-28 **0**

WAAS CH 82008 W28A	APP CRS 280°	Rwy Idg 8003 TDZE 196 Apt Elev 201
--	------------------------	---

RNAV (GPS) RWY 28

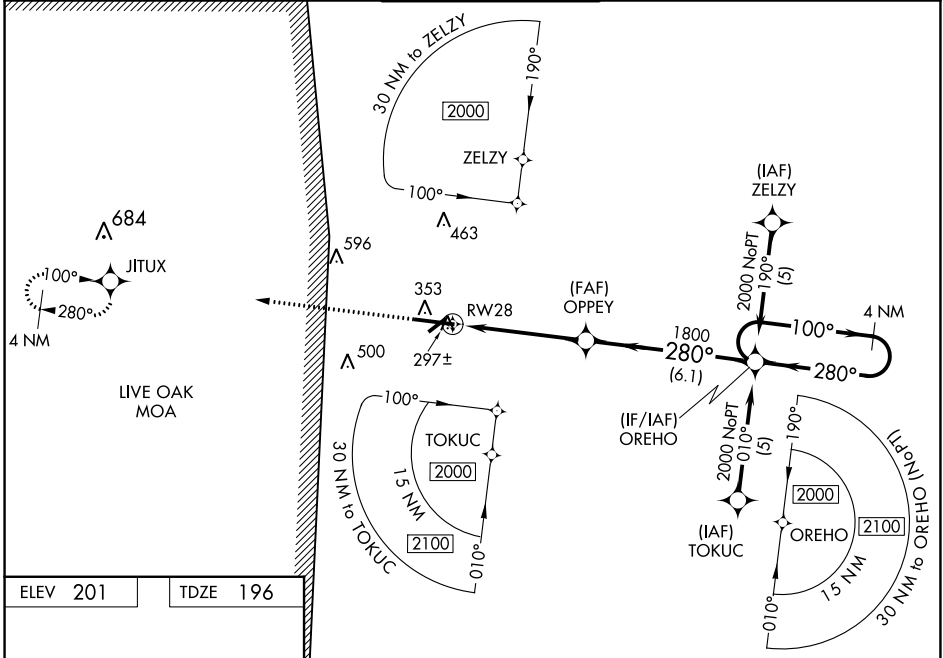
LAKE CITY GATEWAY (LCQ)

RNP APCH-GPS.

▼ Baro-VNAV and VDP NA when using Gainesville altimeter setting. For uncompensated Baro-VNAV systems, LNAV/VNAV NA below -18°C or above 54°C. When local altimeter setting not received, use Gainesville altimeter setting: Increase LPV DA to 624 feet and all visibility ¼ SM; LNAV/VNAV DA to 640 feet and all visibility ⅓ SM; increase all MDAs 100 feet and LNAV visibility Cat C and D ¼ SM and Circling visibility Cat C ½ SM and Circling Cat D ¼ SM. Circling Rwy 10 NA at night. Rwy 13 helicopter visibility reduction below ¾ SM NA.

MISSED APPROACH:
Climb to 2000 direct
JITUX and hold.

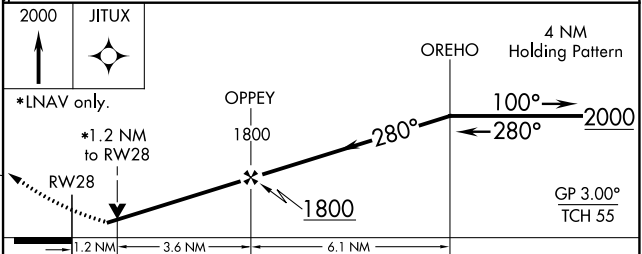
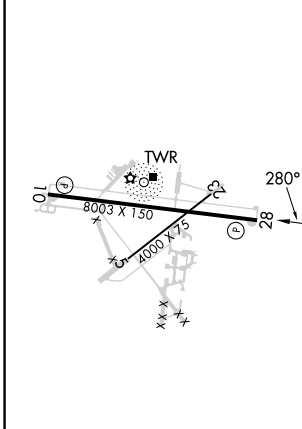
AWOS-3 120.675	JACKSONVILLE CENTER 125.375 254.325	LAKE CITY TOWER ★ 119.2 (CTAF) 0 314.6	GND CON 121.9	UNICOM 122.95
--------------------------	---	--	-------------------------	-------------------------



SE-3, 22 FEB 2024 to 21 MAR 2024

SE-3, 22 FEB 2024 to 21 MAR 2024

ELEV 201	TDZE 196
----------	----------



CATEGORY	A	B	C	D
LPV DA		540-1	344 (400-1)	
LNAV/VNAV DA		556-1	360 (400-1)	
LNAV MDA	640-1	444 (500-1)	640-1 ⅓	444 (500-1 ⅓)
CIRCLING	760-1	559 (600-1)	780-1 ½ 579 (600-1 ½)	960-2 ½ 759 (600-2 ½)

REIL Rwy 10 and 28 **Ⓢ**
MIRL Rwy 5-23 and 10-28 **Ⓢ**