

LOC/DME I-LCH 109.1 Chan 28	APP CRS 152°	Rwy ldg 6500 TDZE 12 Apt Elev 15
--	------------------------	---

ILS or LOC RWY 15

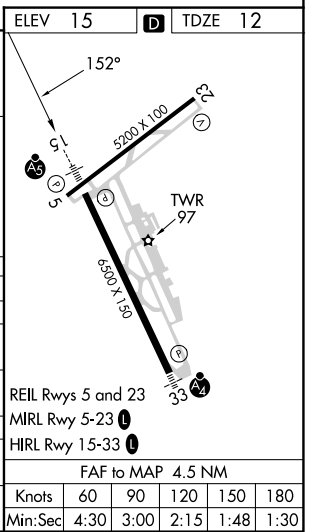
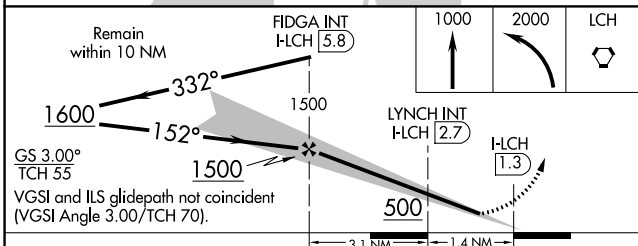
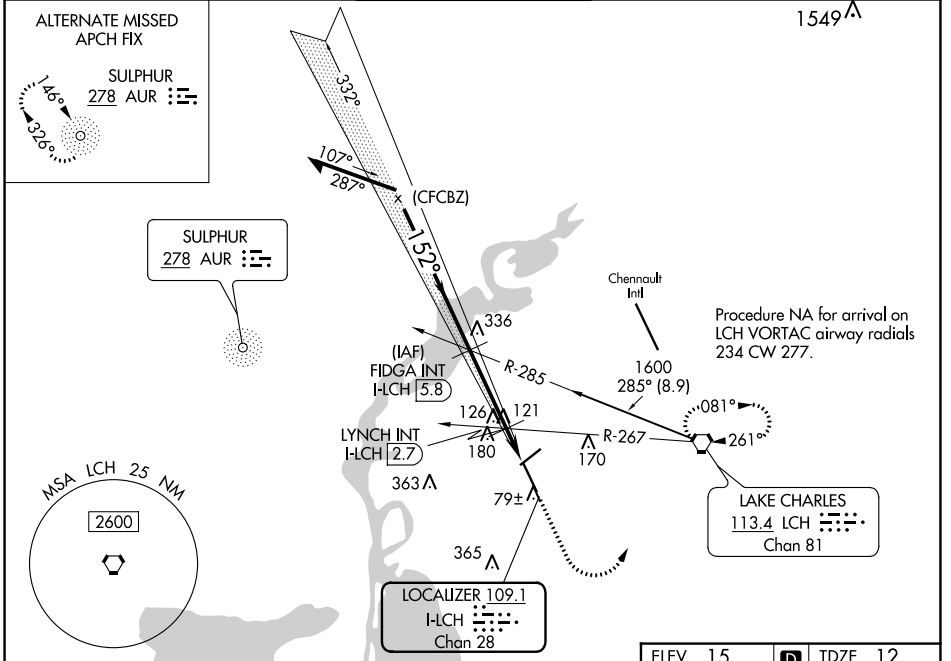
LAKE CHARLES RGNL (LCH)

V For inop ALS, increase S-LOC 15 Cats C and D visibility to 1½ mile.
ASR * RVR 1800 authorized with use of FD or AP or HUD to DA.

MALSR

MISSED APPROACH: Climb to 1000 then climbing left turn to 2000 direct LCH VORTAC and hold, continue climb-in-hold to 2000.

ATIS 118.75	LAKE CHARLES APP CON * 119.35 353.75	LAKE CHARLES TOWER * 120.7 (CTAF) 257.8	GND CON 121.8	CLNC DEL 126.25	UNICOM 122.95
-----------------------	--	---	-------------------------	---------------------------	-------------------------



CATEGORY	A	B	C	D
S-ILS 15*	212/24 200 (200-½)			
S-LOC 15	500/24	488 (500-½)	500/50	488 (500-1)
C CIRCLING	500-1	485 (500-1)	580-1½ 565 (600-1½)	680-2 665 (700-2)
LYNCH FIX MINIMUMS (DUAL VOR RECEIVERS OR DME REQUIRED)				
S-LOC 15	440/24	428 (500-½)	440/40	428 (500-¾)
C CIRCLING	440-1 425 (500-1)	480-1 465 (500-1)	580-1½ 565 (600-1½)	680-2 665 (700-2)

SC-4, 22 FEB 2024 to 21 MAR 2024

SC-4, 22 FEB 2024 to 21 MAR 2024

WAAS CH 65629 W15A	APP CRS 152°	Rwy Idg TDZE 12 Apt Elev 15	6500
--	------------------------	---	-------------

RNAV (GPS) RWY 15

LAKE CHARLES RGNL (LCH)

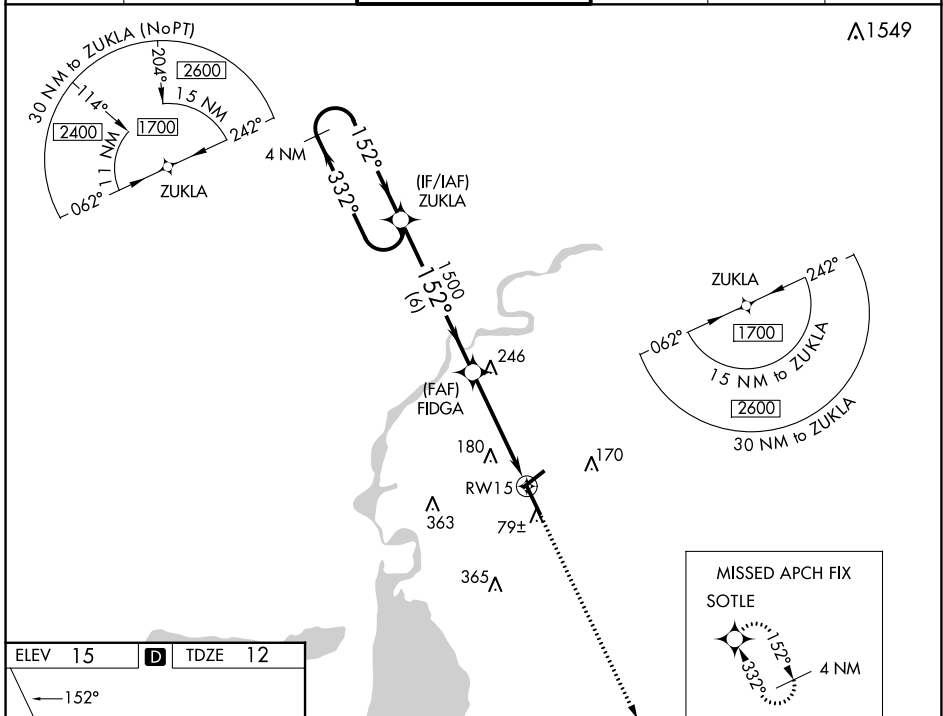
RNP APCH.

For uncompensated Baro-VNAV systems, LNAV/VNAV NA below -3°C (27°F) or above 43°C (109°F). For inop MALS, increase LNAV-VNAV all Cats visibility to ¾ and LNAV Cats C and D to 1 ½ mile. **RVR 1800 authorized with use of FD or AP or HUD to DA.

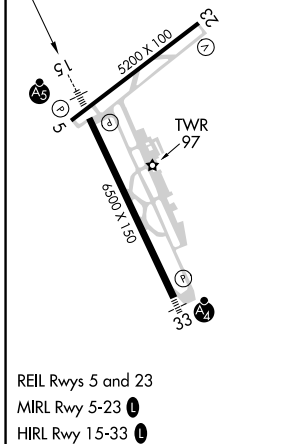


MISSED APPROACH:
Climb to 1900 direct
SOTLE and hold.

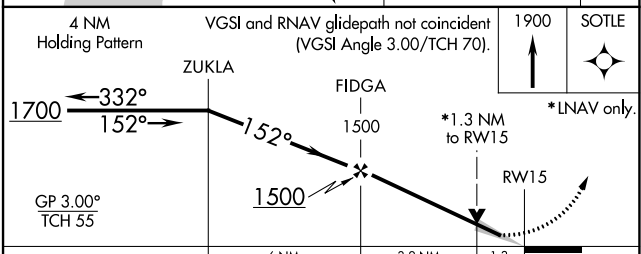
ATIS 118.75	LAKE CHARLES APP CON * 119.35 353.75	LAKE CHARLES TOWER * 120.7 (CTAF) 0 257.8	GND CON 121.8	CLNC DEL 126.25	UNICOM 122.95
-----------------------	--	---	-------------------------	---------------------------	-------------------------



ELEV 15	D	TDZE 12
---------	----------	---------



REIL Rwy 5 and 23
MIRL Rwy 5-23
HIRL Rwy 15-33



CATEGORY	A	B	C	D
LPV DA		212/24	200 (200-½)	
LNAV/VNAV DA		301/24	289 (300-½)	
LNAV MDA	500/24	488 (500-½)	500/50	488 (500-1)
C CIRCLING	500-1	485 (500-1)	580-1½ 565 (600-1½)	680-2¼ 665 (700-2¼)

SC-4, 22 FEB 2024 to 21 MAR 2024

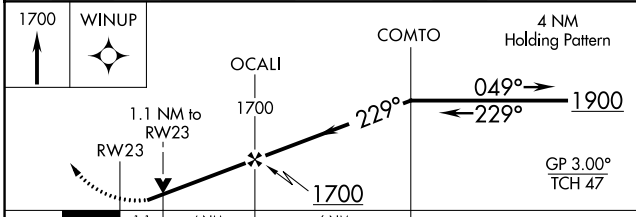
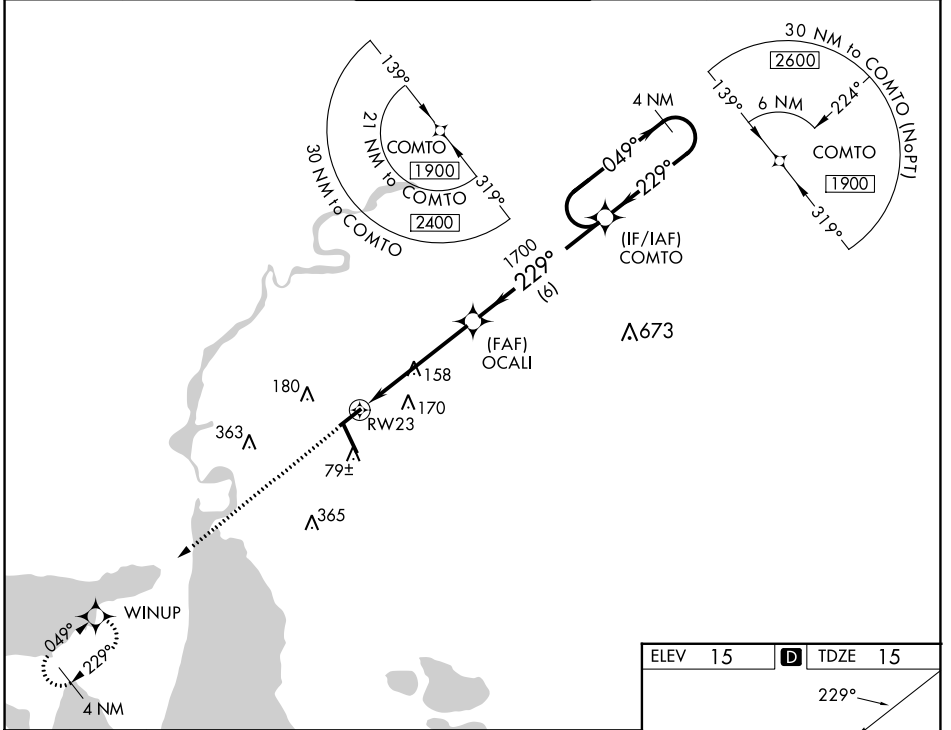
SC-4, 22 FEB 2024 to 21 MAR 2024

WAAS CH 61041 W23A	APP CRS 229°	Rwy Idg 5200 TDZE 15 Apt Elev 15
--	------------------------	---

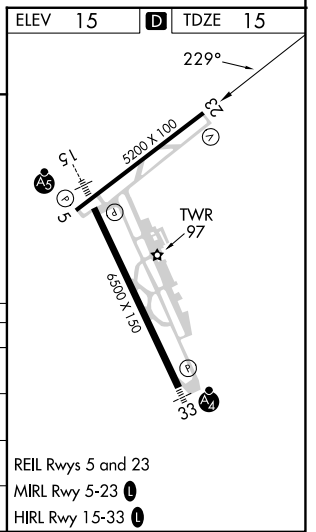
RNAV (GPS) RWY 23

LAKE CHARLES RGNL (LCH)

RNP APCH - GPS.		MISSED APPROACH: Climb to 1700 direct WINUP and hold.	
⚠ For uncompensated Baro-VNAV systems, LNAV/VNAV NA below -2°C or above 54°C. ASR Rwy 23 helicopter visibility reduction below 3/4 SM NA.			
ATIS 118.75	LAKE CHARLES APP CON * 119.35 353.75	LAKE CHARLES TOWER * 120.7 (CTAF) 257.8	GND CON 121.8
		CLNC DEL 126.25	UNICOM 122.95



CATEGORY	A	B	C	D
LPV DA		265-3/4	250 (300-3/4)	
LNAV/VNAV DA		301-7/8	286 (300-7/8)	
LNAV MDA	420-1	405 (500-1)	420-1 1/8	405 (500-1 1/8)
CIRCLING	440-1 425 (500-1)	480-1 465 (500-1)	580-1 1/2 565 (600-1 1/2)	680-2 665 (700-2)



SC-4, 22 FEB 2024 to 21 MAR 2024

SC-4, 22 FEB 2024 to 21 MAR 2024

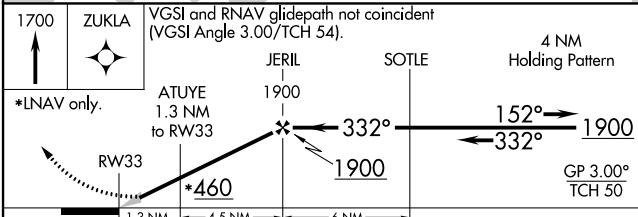
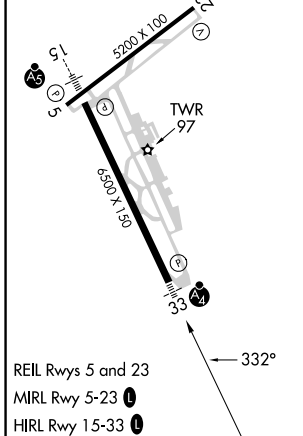
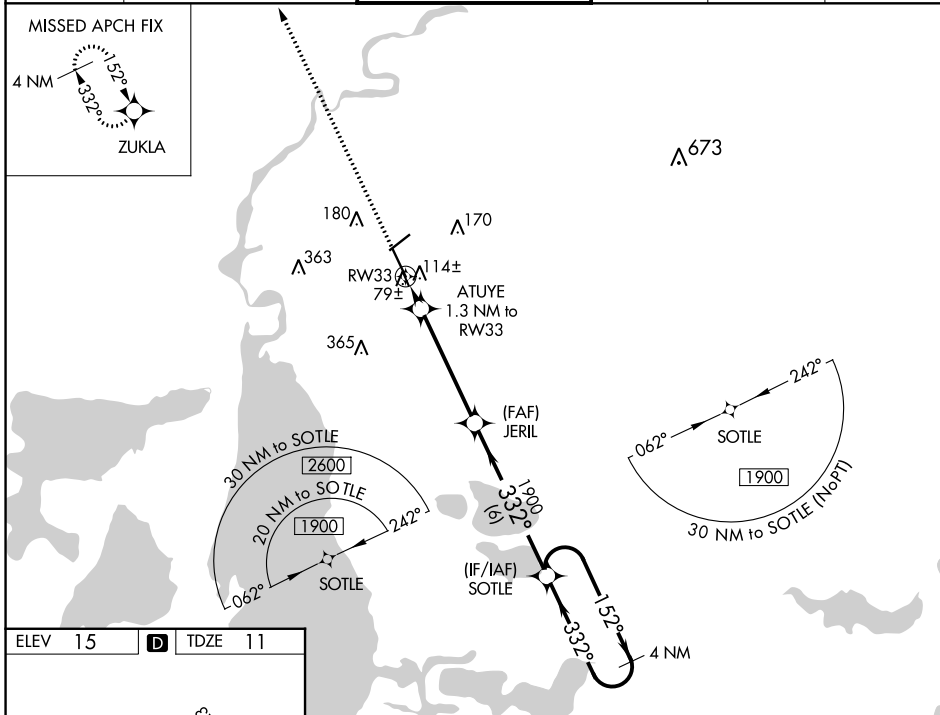
WAAS CH 56215 W33A	APP CRS 332°	Rwy Idg TDZE Apt Elev	6500 11 15
--	------------------------	-----------------------------	---------------------------------------

RNAV (GPS) RWY 33

LAKE CHARLES RGNL (LCH)

RNP APCH.	MALSF	MISSED APPROACH: Climb to 1700 direct ZUKLA and hold.
⚠ For uncompensated Baro-VNAV systems, LNAV/VNAV NA below -3°C (27°F) or above 43°C (109°F). For inop MALSF, increase LNAV/VNAV all Cats visibility to ½ and LNAV all Cats visibility to 1 mile.		

ATIS 118.75	LAKE CHARLES APP CON* 119.35 353.75	LAKE CHARLES TOWER* 120.7 (CTAF) 257.8	GND CON 121.8	CLNC DEL 126.25	UNICOM 122.95
-----------------------	---	--	-------------------------	---------------------------	-------------------------



CATEGORY	A	B	C	D
LPV DA		211-¾	200 (200-¾)	
LNAV/VNAV DA		296-¾	285 (300-¾)	
LNAV MDA		380-¾	369 (400-¾)	
C CIRCLING	440-1 425 (500-1)	480-1 465 (500-1)	580-1½ 565 (600-1½)	680-2¼ 665 (700-2¼)

SC-4, 22 FEB 2024 to 21 MAR 2024

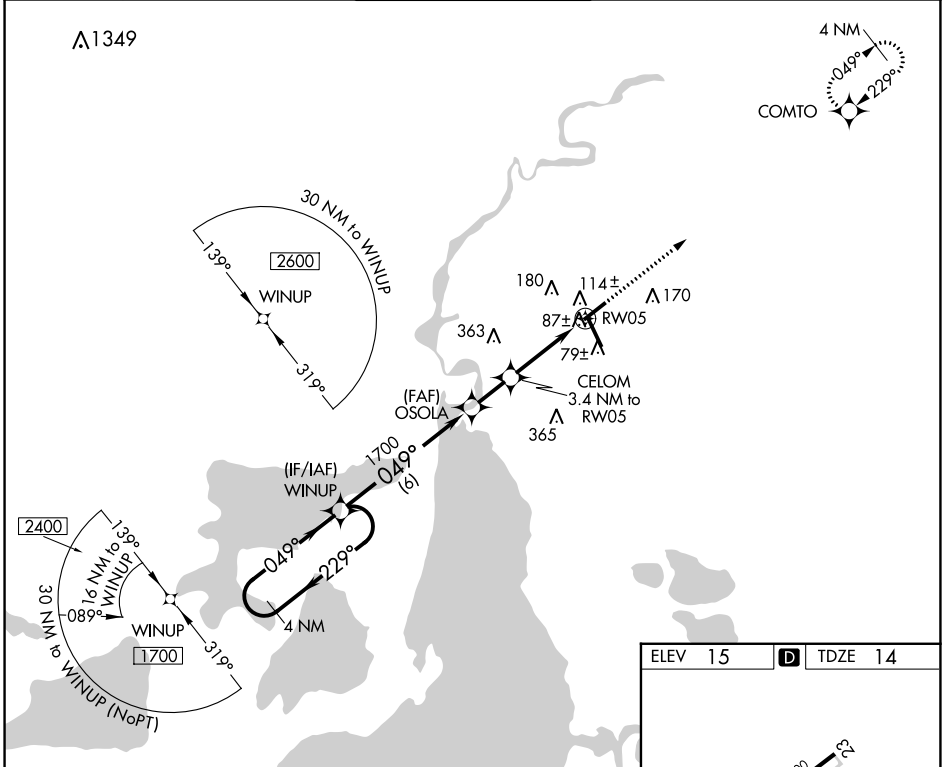
SC-4, 22 FEB 2024 to 21 MAR 2024

WAAS CH 69440 W05A	APP CRS 049°	Rwy Idg 5200 TDZE 14 Apt Elev 15
--	------------------------	---

RNAV (GPS) RWY 5
LAKE CHARLES RGNL (LCH)

▽ Rwy 5 helicopter visibility reduction below 3/4 SM NA. ASR DME/DME RNP-0.3 NA.	MISSED APPROACH: Climb to 1900 direct COMTO and hold.
--	---

ATIS 118.75	LAKE CHARLES APP CON * 119.35 353.75	LAKE CHARLES TOWER * 120.7 (CTAF) 257.8	GND CON 121.8	CLNC DEL 126.25	UNICOM 122.95
-----------------------	--	---	-------------------------	---------------------------	-------------------------



ELEV 15	D TDZE 14
REIL Rwy 5 and 23 MIRL Rwy 5-23 HIRL Rwy 15-33	

4 NM Holding Pattern	WINUP	OSOLA	1900	COMTO
1700 ← 229°	← 049°	1700	CELOM 3.4 NM to RW05	0.9 NM to RW05
			1140	3.00° TCH 49
	6 NM	1.8 NM	2.5 NM	0.9
CATEGORY	A	B	C	D
LP MDA	340-1 326 (400-1)			
LNAV MDA	380-1 366 (400-1)			
C CIRCLING	440-1 425 (500-1)	480-1 465 (500-1)	580-1½ 565 (600-1½)	680-2 665 (700-2)

SC-4, 22 FEB 2024 to 21 MAR 2024

SC-4, 22 FEB 2024 to 21 MAR 2024

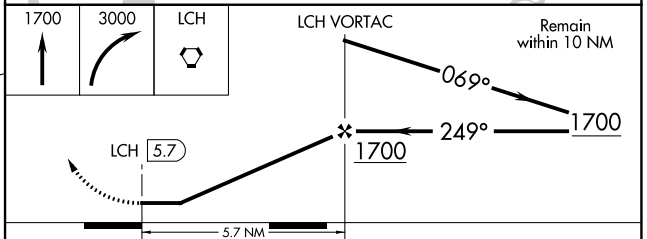
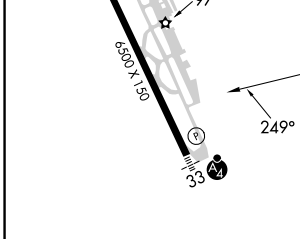
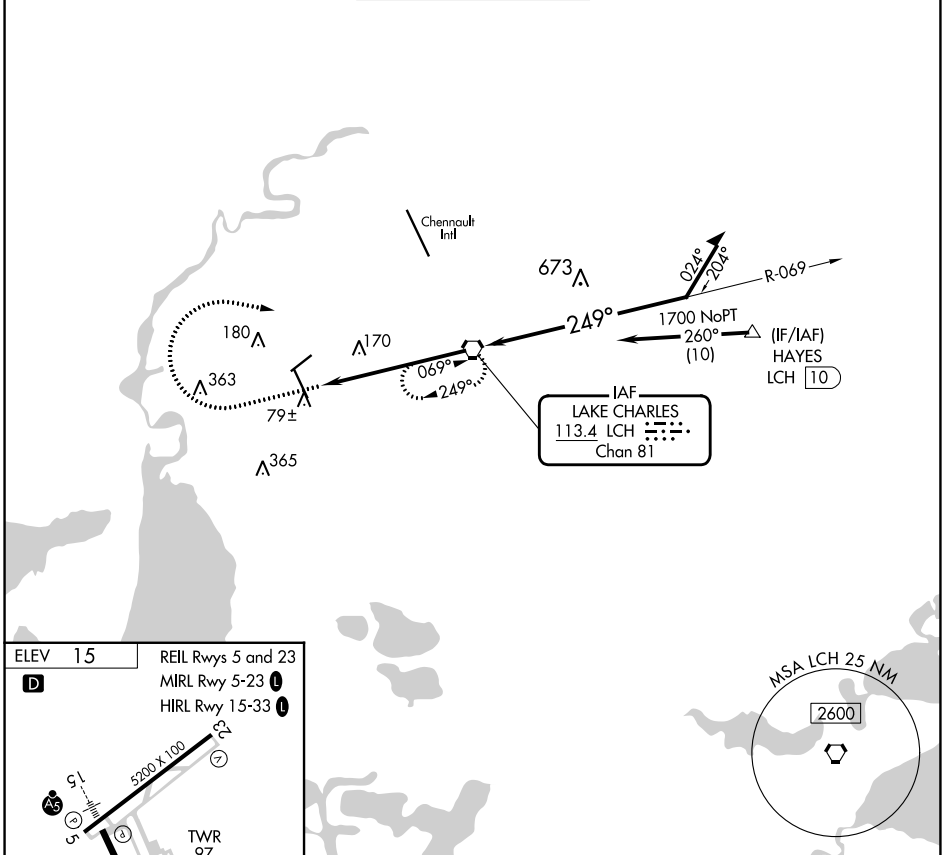
VORTAC LCH 113.4 Chan 81	APP CRS 249°	Rwy Idg TDZE Apt Elev	N/A N/A 15
---------------------------------------	------------------------	-----------------------------	---------------------------------------

VOR-A

LAKE CHARLES RGNL (LCH)

ASR	MISSED APPROACH: Climb to 1700 then climbing right turn to 3000 direct LCH VORTAC and hold, continue climb-in-hold 3000.				
-----	--	--	--	--	--

ATIS 118.75	LAKE CHARLES APP CON* 119.35 353.75	LAKE CHARLES TOWER* 120.7 (CTAF) 257.8	GND CON 121.8	CLNC DEL 126.25	UNICOM 122.95
-----------------------	---	---	-------------------------	---------------------------	-------------------------



FAF to MAP 5.7 NM					
Knots	60	90	120	150	180
Min:Sec	5:42	3:48	2:51	2:17	1:54
CIRCLING	A 460-1 445 (500-1)	B 480-1 465 (500-1)	C 580-1½ 565 (600-1½)	D 680-2 665 (700-2)	

SC-4, 22 FEB 2024 to 21 MAR 2024

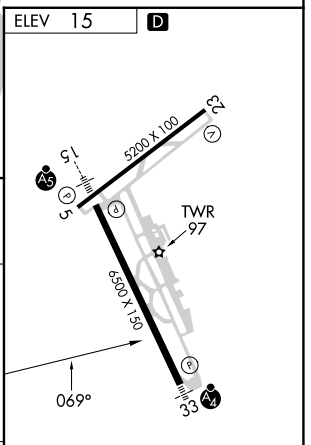
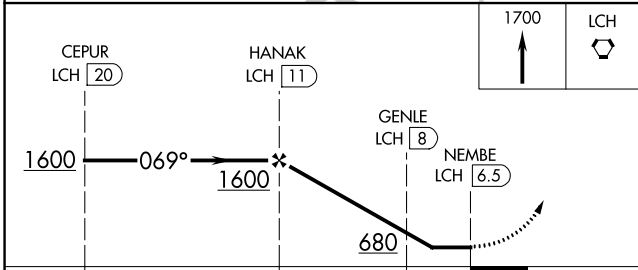
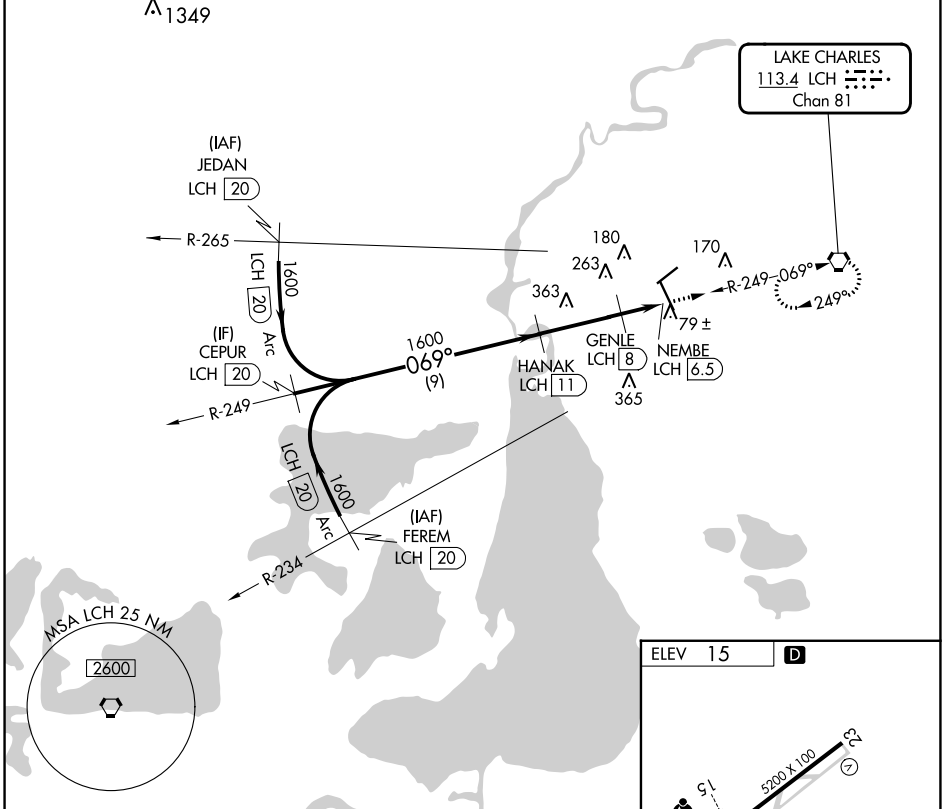
SC-4, 22 FEB 2024 to 21 MAR 2024

VORTAC LCH 113.4 Chan 81	APP CRS 069°	Rwy Idg TDZE Apt Elev	N/A N/A 15
---------------------------------------	------------------------	-----------------------------	---------------------------------------

VOR-B
LAKE CHARLES RGNL (LCH)

DME required.		MISSED APPROACH: Climb to 1700 direct LCH VORTAC and hold.			
ATIS 118.75	LAKE CHARLES APP CON* 119.35 353.75	LAKE CHARLES TOWER* 120.7 (CTAF) 257.8	GND CON 121.8	CLNC DEL 126.25	UNICOM 122.95

ATIS 118.75	LAKE CHARLES APP CON* 119.35 353.75	LAKE CHARLES TOWER* 120.7 (CTAF) 257.8	GND CON 121.8	CLNC DEL 126.25	UNICOM 122.95
-----------------------	---	---	-------------------------	---------------------------	-------------------------



CATEGORY	A	B	C	D
CIRCLING	500-1	485 (500-1)	580-1½ 565 (600-1½)	680-2 665 (700-2)

REIL Rwy 5 and 23
MRL Rwy 5-23
HIRL Rwy 15-33

SC-4, 22 FEB 2024 to 21 MAR 2024

SC-4, 22 FEB 2024 to 21 MAR 2024