

(ALCRN.ALCRN1) 23166

AL-5570 (FAA)

# ALCRN ONE ARRIVAL (RNAV)

JACKSONVILLE, FLORIDA

RNAV 1 - DME/DME/IRU or GPS.

RADAR required.

JACKSONVILLE APP CON  
 127.0 269.9  
 CRG ATIS  
 125.4  
 JAX D-ATIS  
 125.85  
 KNIP ATIS  
 124.35 290.425  
 KNRB ATIS ★  
 236.775  
 VQQ ATIS  
 125.275

ALLMA  
FL230

5000  
\*1700  
163°  
(36)

ALCRN  
14000  
12000

160°  
(31)

141°  
(35)

NOTE: Jet and turboprop aircraft only.  
NOTE: Landing KJAX: Turboprop aircraft only.

SNKEM  
4000

Ldg KJAX/KCRG/KNRB

AAMOS  
6000

Ldg KVQQ/KNIP



JACKSONVILLE  
INTL

MAYPORT NS  
(ADM DAVID L MCDONALD FLD)

JACKSONVILLE EXEC  
AT CRAIG

JACKSONVILLE NAS  
(TOWERS FLD)

CECIL

NOTE: Chart not to scale.

## ARRIVAL ROUTE DESCRIPTION

### ALLMA TRANSITION (ALLMA.ALCRN1)

LANDING KJAX/KNRB/KCRG: From ALCRN on track 141° to cross SNKEM at or above 4000, then on track 141°. Expect RADAR vectors to final approach course.

LANDING KVQQ/KNIP: From ALCRN on track 160° to cross AAMOS at or above 6000, then on track 160°. Expect RADAR vectors to final approach course.

# ALCRN ONE ARRIVAL (RNAV)

JACKSONVILLE, FLORIDA

(ALCRN.ALCRN1) 15JUN23

SE-3, 22 FEB 2024 to 21 MAR 2024

SE-3, 22 FEB 2024 to 21 MAR 2024

(HOTAR.HOTAR1) 23110

AL-5570 (FAA)

# HOTAR ONE ARRIVAL (RNAV)

JACKSONVILLE, FLORIDA

JACKSONVILLE APP CON  
 119.0 127.0 269.9 292.15 (270°-090°)  
 127.775 377.075 (181°-269°)  
 124.9 308.4 (091°-180°)  
 CRG ATIS 125.4  
 JAX D-ATIS 125.85  
 KNIP ATIS 124.35 290.425  
 KNRB ATIS \* 236.775  
 SGJ ATIS 119.625  
 VQQ ATIS 125.275

## ARRIVAL ROUTE DESCRIPTION

### BASLE TRANSITION (BASLE.HOTAR1)

From JABOR on track 191° to HOTAR.

LANDING JAX: From HOTAR on track 263° to YEJWO.

Expect radar vectors to an ILS or LOC final approach course.

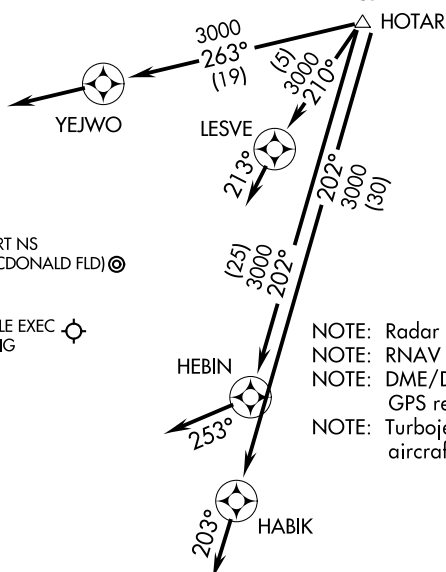
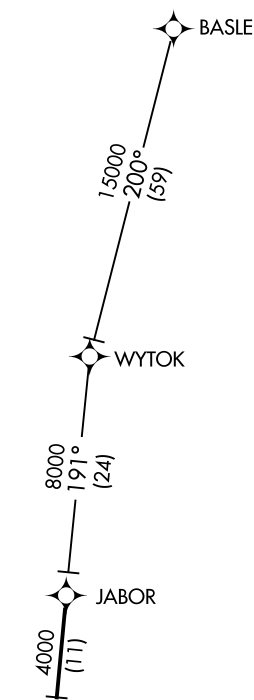
LANDING NRB and CRG: From HOTAR on track 210° to LESVE, then on 213° heading or as assigned by ATC.

Expect radar vectors to final approach course.

LANDING SGJ: From HOTAR on track 202° to HABIK, then on 203° heading or as assigned by ATC. Expect radar vectors to final approach course.

LANDING VQQ and NIP: From HOTAR on track 202° to HEBIN, then on 253° heading or as assigned by ATC. Expect radar vectors to final approach course.

NOTE: YEJWO Transition-ATC assigned only.



NOTE: Radar required.  
 NOTE: RNAV 1.  
 NOTE: DME/DME/IRU or GPS required.  
 NOTE: Turbojet and turboprop aircraft only.

NOTE: Chart not to scale.

SE-3, 22 FEB 2024 to 21 MAR 2024

SE-3, 22 FEB 2024 to 21 MAR 2024

# HOTAR ONE ARRIVAL (RNAV)

(HOTAR.HOTAR1) 17OCT13

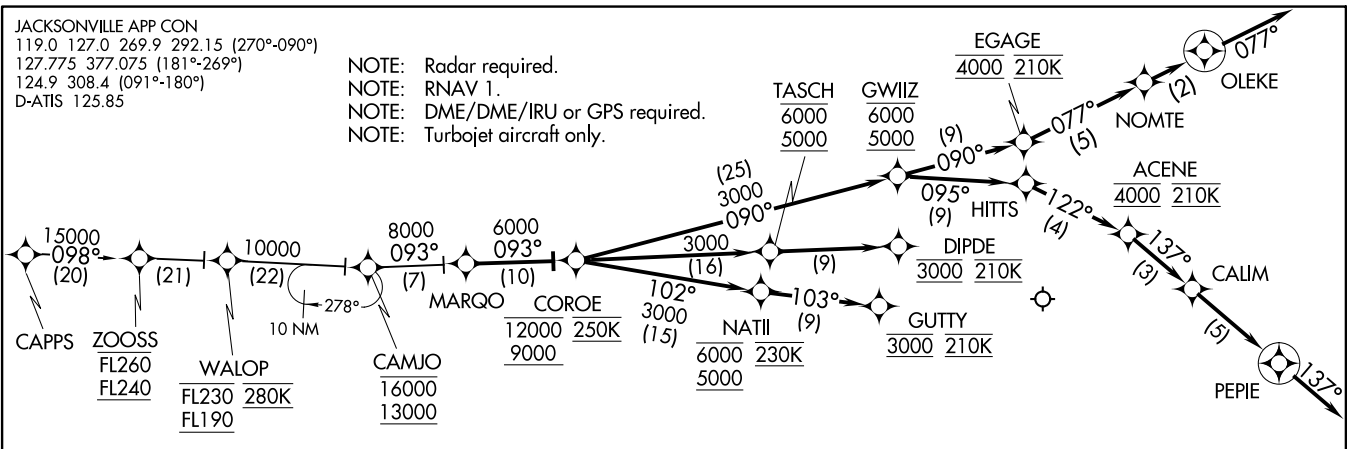
JACKSONVILLE, FLORIDA



MARQO TWO ARRIVAL (RNAV)  
 (MARQO.MARQO2) 17AUG17

JACKSONVILLE APP CON  
 119.0 127.0 269.9 292.15 (270°-090°)  
 127.775 377.075 (181°-269°)  
 124.9 308.4 (091°-180°)  
 D-ATIS 125.85

NOTE: Radar required.  
 NOTE: RNAV 1.  
 NOTE: DME/DME/IRU or GPS required.  
 NOTE: Turbojet aircraft only.



ARRIVAL ROUTE DESCRIPTION

CAPPS TRANSITION (CAPPS.MARQO2):

From MARQO on track 093° to cross COROE between 9000 and 12000 and at 250K.

LANDING RWY 8: From COROE on track 102° to cross NATII between 5000 and 6000 and at 230K, then on track 103° to cross GUTTY at 3000 and at 210K. Expect RNAV (RNP) RWY 8 approach; non-RNP aircraft: expect RADAR vectors to final approach course.

LANDING RWY 14: From COROE on track 093° to cross TASCH between 5000 and 6000, then on track 093° to cross DIPDE at 3000 and at 210K. Expect RNAV (RNP) RWY 14 approach; non-RNP aircraft: expect RADAR vectors to final approach course.

LANDING RWY 26: From COROE on track 090° to cross GWIIZ between 5000 and 6000, then on track 090° to cross EGAGE at 4000 and at 210K, then on track 077° to NOMTE, then on track 077° to OLEKE, then on 077° track. Expect RADAR vectors to final approach course.

LANDING RWY 32: From COROE on track 090° to cross GWIIZ between 5000 and 6000, then on track 095° to HITS, then on track 122° to cross ACENE at 4000 and at 210K, then on track 137° to CALIM, then on track 137° to PEPIE, then on 137° track. Expect RADAR vectors to final approach course.

NOTE: Chart not to scale.

JACKSONVILLE, FLORIDA  
 JACKSONVILLE INTL (JAX)

(MARQO.MARQO2) 203110  
 MARQO TWO ARRIVAL (RNAV)

AL-5570 (FAA)

JACKSONVILLE INTL (JAX)  
 JACKSONVILLE, FLORIDA

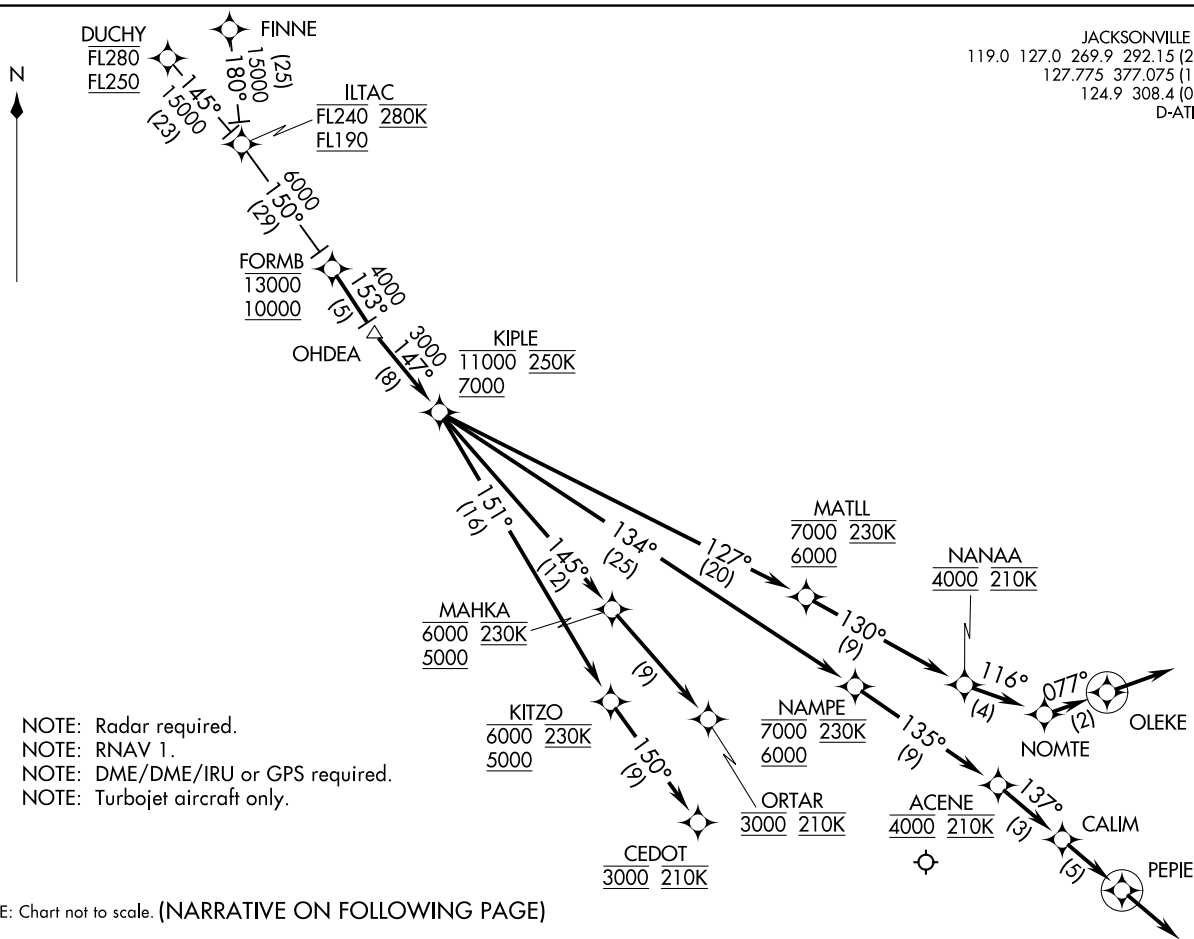
OHDEA ONE ARRIVAL (RNAV)  
(OHDEA.OHDEA1) 17OCT13

JACKSONVILLE, FLORIDA  
JACKSONVILLE INTL (JAX)

(OHDEA.OHDEA1) 18088  
OHDEA ONE ARRIVAL (RNAV)  
AL-5770 (FAA)

JACKSONVILLE INTL (JAX)  
JACKSONVILLE, FLORIDA

JACKSONVILLE APP CON  
119.0 127.0 269.9 292.15 (270°-090°)  
127.775 377.075 (181°-269°)  
124.9 308.4 (091°-180°)  
D-ATIS 125.85



- NOTE: Radar required.
- NOTE: RNAV 1.
- NOTE: DME/DME/IRU or GPS required.
- NOTE: Turbojet aircraft only.

NOTE: Chart not to scale. (NARRATIVE ON FOLLOWING PAGE)

ARRIVAL ROUTE DESCRIPTION

DUCHY TRANSITION (DUCHY.OHDEA1)

FINNE TRANSITION (FINNE.OHDEA1)

From FORMB on track 153° to OHDEA, then on track 147° to cross KIPLE between 7000 and 11000 and at 250K.

LANDING RWY 8: From KIPLE on track 151° to cross KITZO between 5000 and 6000 and at 230K, then on track 150° to cross CEDOT at 3000 and at 210K. Expect radar vectors to RNAV (RNP)/Visual approach as assigned by ATC.

LANDING RWY 14: From KIPLE on track 145° to cross MAHKA between 5000 and 6000 and at 230K, then on track 145° to cross ORTAR at 3000 and at 210K. Expect radar vectors to RNAV (RNP)/Visual approach as assigned by ATC.

LANDING RWY 26: From KIPLE on track 127° to cross MATLL between 6000 and 7000 and at 230K, then on track 130° to cross NANAA at 4000 and at 210K, then on track 116° to NOMTE, then on track 077° to OLEKE, then on 077° track. Expect radar vectors to final approach course.

LANDING RWY 32: From KIPLE on track 134° to cross NAMPE between 6000 and 7000 and at 230K, then on track 135° to cross ACENE at 4000 and at 210K, then on track 137° to CALIM, then on track 137° to PEPIE, then on 137° track. Expect radar vectors to final approach course.

SE-3, 22 FEB 2024 to 21 MAR 2024

SE-3, 22 FEB 2024 to 21 MAR 2024

JACKSONVILLE INTL 

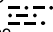
JACKSONVILLE APP CON  
127.775 379.9  
CRG ATIS  
125.4  
JAX D-ATIS  
125.85  
KNIP ATIS  
124.35 290.425  
KNRB ATIS ★  
236.775  
VQQ ATIS  
125.275

MAYPORT NS  
(ADM DAVID L MCDONALD FLD) 

JACKSONVILLE EXEC  
AT CRAIG

JACKSONVILLE NAS  
(TOWERS FLD) 

CECIL 

CRAIG  
114.5 CRG   
Chan 92  
N30°20.33' - W81°30.60'

MOSEL  
N30°10.53' - W81°33.00'


TURBOJET VERTICAL NAVIGATION  
PLANNING INFORMATION  
Expect 5000

POGIE  
N29°46.18' - W81°38.92'

BASS  
N29°40.84' - W81°32.74'

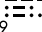
TURBOJET VERTICAL NAVIGATION  
PLANNING INFORMATION  
Expect 13000 250K

SHINR  
N29°35.32' - W81°26.38'

ORMOND BEACH  
112.6 OMN   
Chan 73

CROPY  
N28°47.55' - W81°21.59'

TURBOJET VERTICAL NAVIGATION  
PLANNING INFORMATION  
Expect FL270

ORLANDO  
112.2 ORL   
Chan 59  
N28°32.56' - W81°20.10'  
L-21-23-24, H-8

NOTE: RADAR required.

NOTE: DME required.

NOTE: Chart not to scale.

### ARRIVAL ROUTE DESCRIPTION

From over ORL VORTAC on ORL R-355 to SHINR, then on OMN R-315 to POGIE, then on CRG R-195 to CRG VORTAC. Expect RADAR vectors to final approach course after CRG VORTAC.

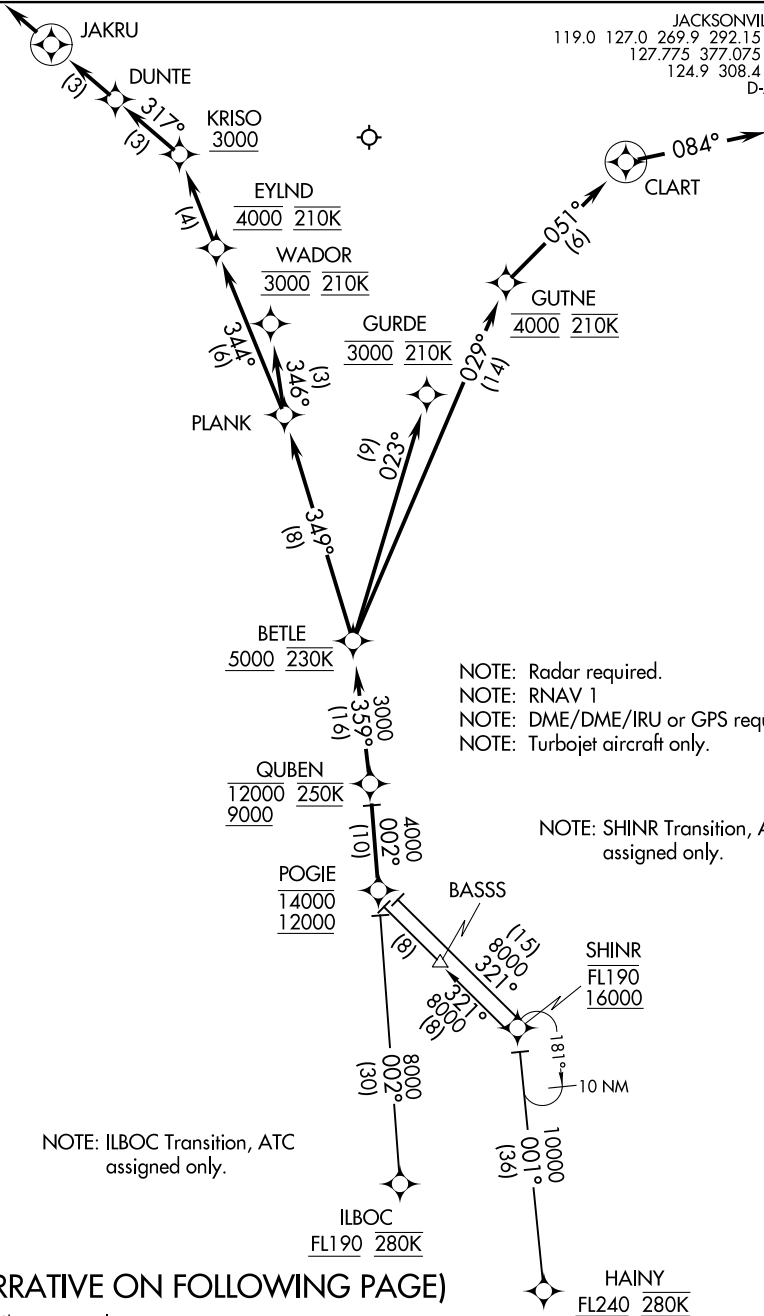
(QUBEN.QUBEN1) 18088

AL-5570 (FAA)

JACKSONVILLE INTL (JAX)  
JACKSONVILLE, FLORIDA

# QUBEN ONE ARRIVAL (RNAV)

JACKSONVILLE APP CON  
119.0 127.0 269.9 292.15 (270°-090°)  
127.775 377.075 (181°-269°)  
124.9 308.4 (091°-180°)  
D-ATIS 125.85



NOTE: Radar required.  
NOTE: RNAV 1  
NOTE: DME/DME/IRU or GPS required.  
NOTE: Turbojet aircraft only.

NOTE: SHINR Transition, ATC assigned only.

NOTE: ILBOC Transition, ATC assigned only.

(NARRATIVE ON FOLLOWING PAGE)

NOTE: Chart not to scale.

SE-3, 22 FEB 2024 to 21 MAR 2024

SE-3, 22 FEB 2024 to 21 MAR 2024

QUBEN ONE ARRIVAL (RNAV)  
(QUBEN.QUBEN1) 17OCT13

JACKSONVILLE, FLORIDA  
JACKSONVILLE INTL (JAX)



# QUBEN ONE ARRIVAL (RNAV)

## ARRIVAL ROUTE DESCRIPTION

HAINY TRANSITION (HAINY.QUBEN1)

ILBOC TRANSITION (ILBOC.QUBEN1)

SHINR TRANSITION (SHINR.QUBEN1)

From POGIE on track 002° to cross QUBEN between 9000 and 12000 and at 250K.

LANDING RWY 8: From QUBEN on track 359° to cross BETLE at or above 5000 and at 230K, then on track 349° to PLANK, then on track 346° to cross WADOR at 3000 and at 210K. Expect radar vectors to RNAV (RNP)/Visual approach as assigned by ATC.

LANDING RWY 14: From QUBEN on track 359° to cross BETLE at or above 5000 and at 230K, then on track 349° to PLANK, then on track 344° to cross EYLND at 4000 and at 210K, then on track 344° to cross KRISO at or above 3000, then on track 317° to DUNTE, then on track 317° to JAKRU, then on 317° track. Expect radar vectors to final approach course.

LANDING RWY 26: From QUBEN on track 359° to cross BETLE at or above 5000 and at 230K, then on track 029° to cross GUTNE at 4000 and at 210K, then on track 051° to CLART, then on 084° track. Expect radar vectors to final approach course.

LANDING RWY 32: From QUBEN on track 359° to cross BETLE at or above 5000 and at 230K, then on track 023° to cross GURDE at 3000 and at 210K. Expect radar vectors to RNAV (RNP)/Visual approach as assigned by ATC.

SE-3, 22 FEB 2024 to 21 MAR 2024

SE-3, 22 FEB 2024 to 21 MAR 2024

(TEBOW.TEBOW1) 18088

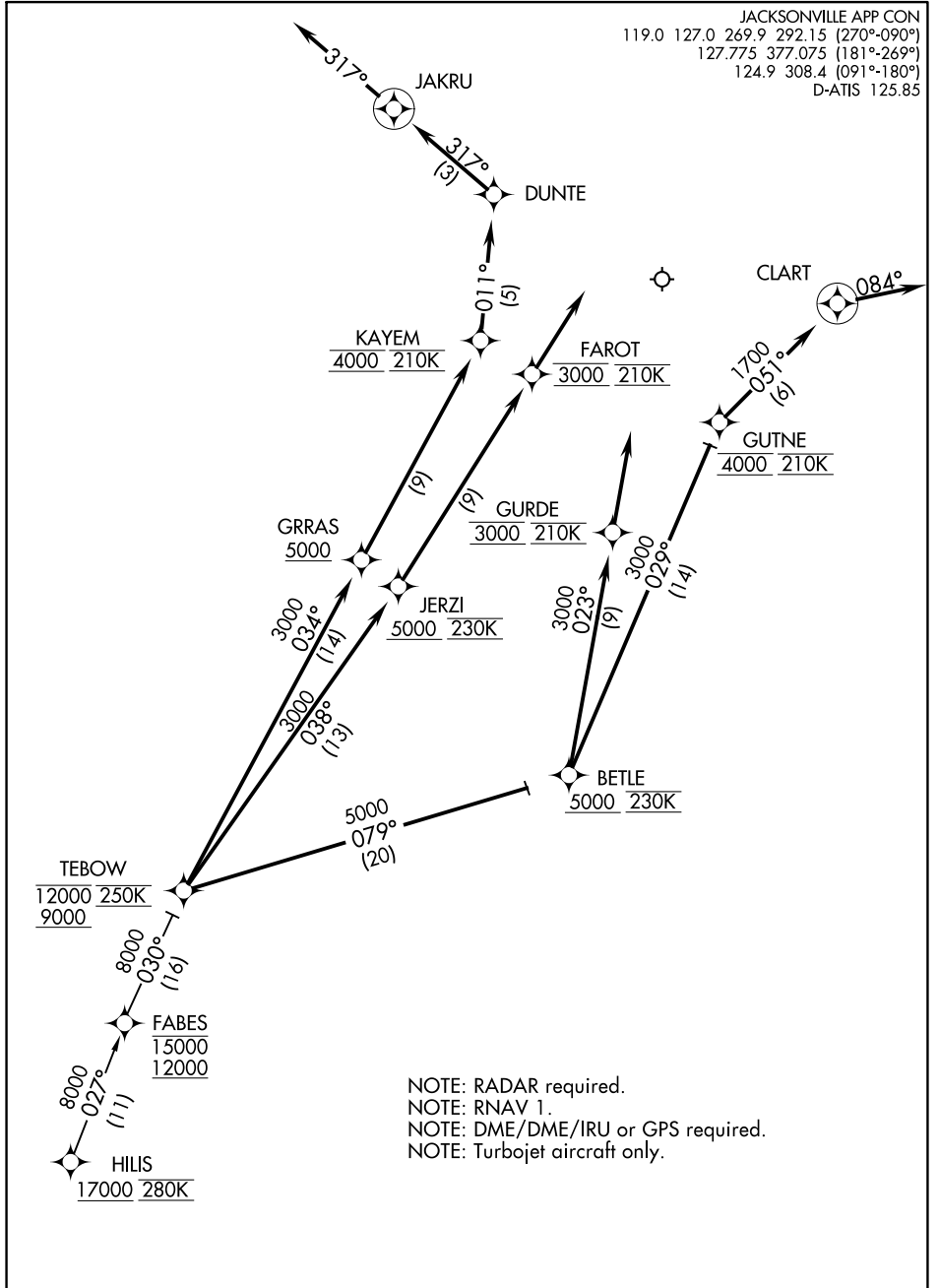
AL-5570 (FAA)

JACKSONVILLE INTL (JAX)

# TEBOW ONE ARRIVAL (RNAV)

JACKSONVILLE, FLORIDA

JACKSONVILLE APP CON  
 119.0 127.0 269.9 292.15 (270°-090°)  
 127.775 377.075 (181°-269°)  
 124.9 308.4 (091°-180°)  
 D-ATIS 125.85



NOTE: RADAR required.  
 NOTE: RNAV 1.  
 NOTE: DME/DME/IRU or GPS required.  
 NOTE: Turbojet aircraft only.

SE-3, 22 FEB 2024 to 21 MAR 2024

SE-3, 22 FEB 2024 to 21 MAR 2024

(NARRATIVE CONTINUED ON NEXT PAGE)

NOTE: Chart not to scale.

# TEBOW ONE ARRIVAL (RNAV)

(TEBOW.TEBOW1) 13NOV14

JACKSONVILLE, FLORIDA  
JACKSONVILLE INTL (JAX)

ARRIVAL ROUTE DESCRIPTION

HILIS TRANSITION (HILIS.TEBOW1)

From FABES on track 030° to cross TEBOW between 9000 and 12000 and at 250K.

LANDING RWY 8: From TEBOW on track 038° to cross JERZI at or above 5000 and at 230K, then on track 038° to cross FAROT at 3000 and at 210K. Expect ILS or LOC RWY 8.

LANDING RWY 14: From TEBOW on track 034° to cross GRRAS at or above 5000, then on track 034° to cross KAYEM at 4000 and at 210K, then on track 011° to DUNTE, then on track 317° to JAKRU, then on track 317°. Expect radar vectors to final approach course.

LANDING RWY 26: From TEBOW on track 079° to cross BETLE at or above 5000 and at 230K, then on track 029° to cross GUTNE at 4000 and at 210K, then on track 051° to CLART, then on track 084°. Expect radar vectors to final approach course.

LANDING RWY 32: From TEBOW on track 079° to cross BETLE at or above 5000 and at 230K, then on track 023° to cross GURDE at 3000 and at 210K. Expect ILS or LOC RWY 32.

SE-3, 22 FEB 2024 to 21 MAR 2024

SE-3, 22 FEB 2024 to 21 MAR 2024