

WAAS CH <b>87013</b> <b>W18A</b>	APP CRS <b>177°</b>	Rwy ldg TDZE Apt Elev	<b>5500</b> <b>213</b> <b>213</b>
--	------------------------	-----------------------------	---

# RNAV (GPS) RWY 18

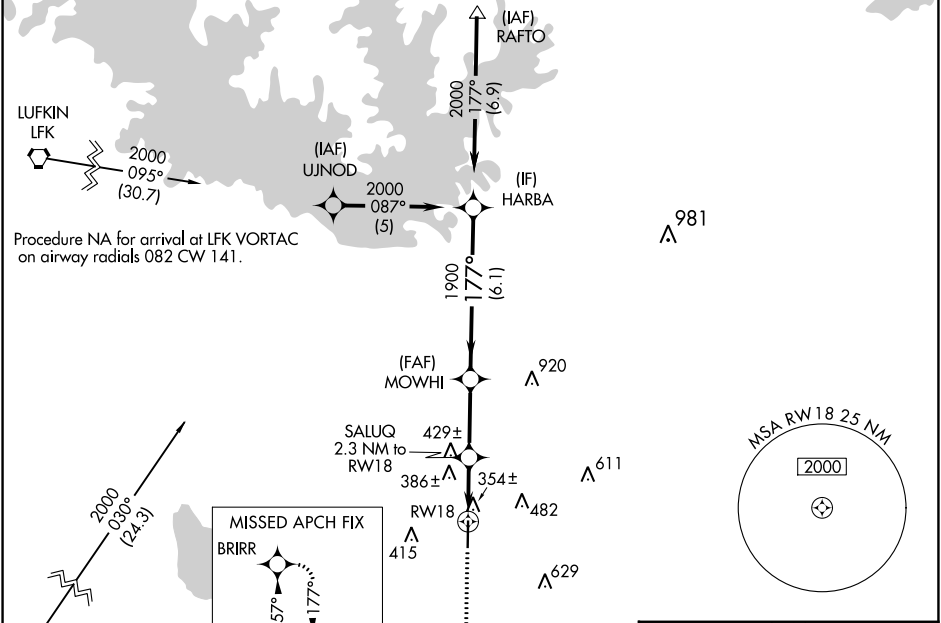
JASPER COUNTY/BELL FLD (JAS)

RNP APCH-GPS.

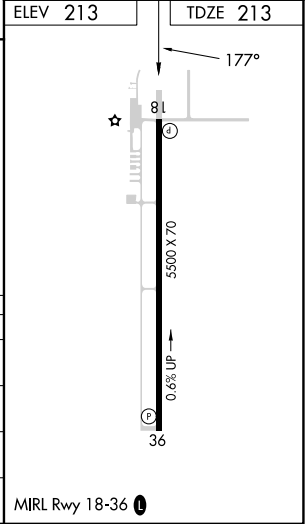
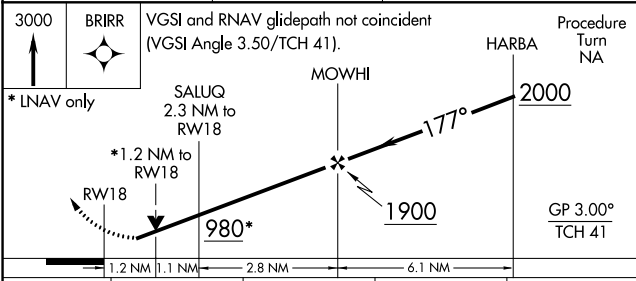
▼ Baro-VNAV NA when using De Ridder altimeter setting. For uncompensated Baro-VNAV systems, LNAV/VNAV NA below -15°C or above 54°C. Rwy 18 helicopter visibility reduction below 3/4 SM NA. VDP NA when using De Ridder altimeter setting. When local altimeter setting not received, use De Ridder altimeter setting and increase LPV DA to 654 feet and all visibilities 3/8 SM. Increase LNAV/VNAV DA to 817 feet and all visibilities 3/8 SM. Increase all MDAs 100 feet and LNAV visibility Cat C 3/8 SM, and Circling visibility Cat C 1/2 SM.

MISSED APPROACH:  
Climb to 3000  
direct BRIR and hold.

AWOS-3 <b>118.375</b>	HOUSTON CENTER <b>126.95 363.05</b>	UNICOM <b>122.8 (CTAF)</b>
--------------------------	--	-------------------------------



ELEV 213	TDZE 213
----------	----------



CATEGORY	A	B	C	D
LPV DA	567-1	354 (400-1)		NA
LNAV/VNAV DA	730-1 3/8	517 (600-1 3/8)		NA
LNAV MDA	700-1 487 (500-1)	700-1 3/8 487 (500-1 3/8)		NA
CIRCLING	740-1 527 (600-1)	800-1 1/2 587 (600-1 1/2)		NA

SC-5, 22 FEB 2024 to 21 MAR 2024

SC-5, 22 FEB 2024 to 21 MAR 2024

WAAS CH <b>42813</b> <b>W36A</b>	APP CRS <b>357°</b>	Rwy Idg TDZE <b>192</b> Apt Elev <b>213</b>	<b>5500</b>
--	------------------------	---	-------------

# RNAV (GPS) RWY 36

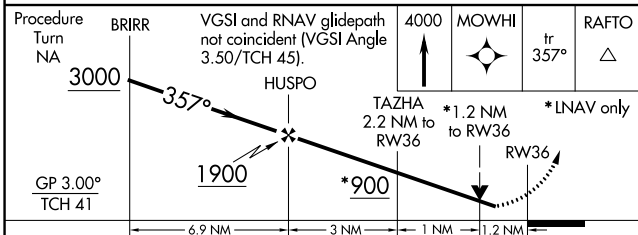
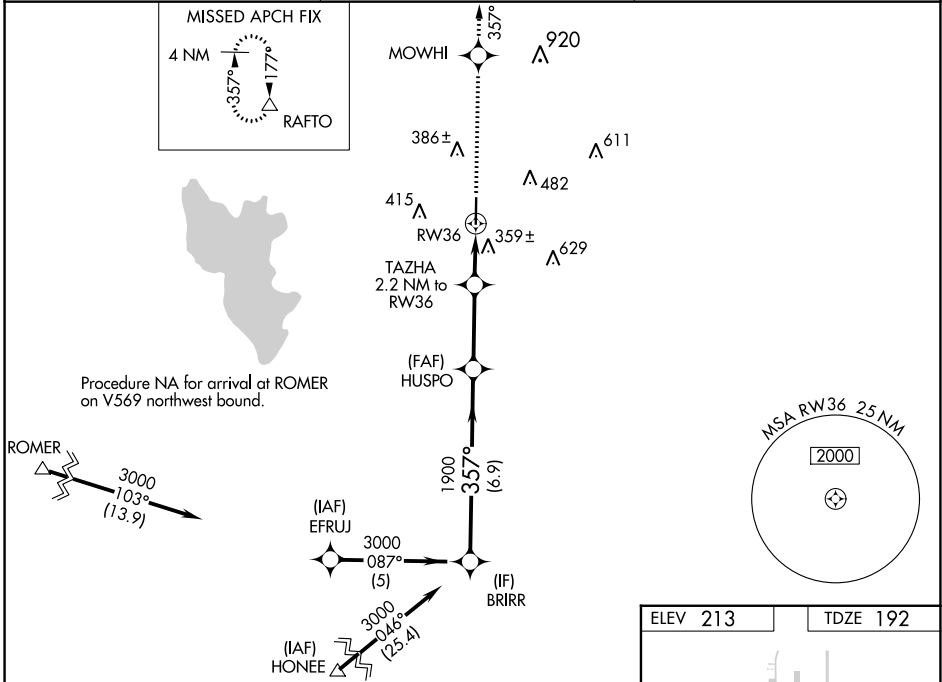
JASPER COUNTY/BELL FLD (JAS)

RNP APCH-GPS

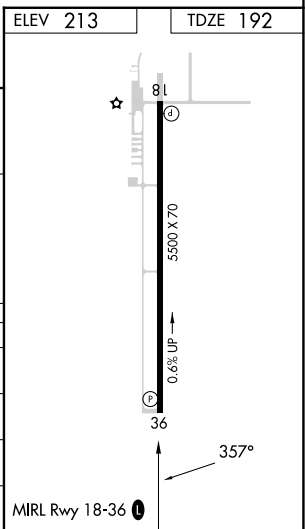
**⚠** Baro-VNAV NA when using De Ridder altimeter setting. For uncompensated Baro-VNAV systems, LNAV/VNAV NA below -15°C or above 54°C. Rwy 36 helicopter visibility reduction below ¼ SM NA. VDP NA when using De Ridder altimeter setting. When local altimeter setting not received, use De Ridder altimeter setting and increase LPV DA to 681 feet and all visibilities ¼ SM, increase LNAV/VNAV DA to 762 feet and all visibilities ¼ SM, increase all MDAs 100 feet and LNAV visibility Cat C ½ SM, and Circling visibility Cat C ¼ SM.

**MISSED APPROACH:**  
Climb to 4000 direct MOWHI and via track 357° to RAFTO and hold.

AWOS-3 <b>118.375</b>	HOUSTON CENTER <b>126.95 363.05</b>	UNICOM <b>122.8 (CTAF) ①</b>
--------------------------	--	---------------------------------



CATEGORY	A	B	C	D
LPV DA	594-1½		402 (400-1½)	NA
LNAV/VNAV DA	675-1¾		483 (500-1¾)	NA
LNAV MDA	680-1	488 (500-1)	680-1¾ 488 (500-1¾)	NA
CIRCLING	740-1	527 (600-1)	800-1½ 587 (600-1½)	NA



SC-5, 22 FEB 2024 to 21 MAR 2024

SC-5, 22 FEB 2024 to 21 MAR 2024