

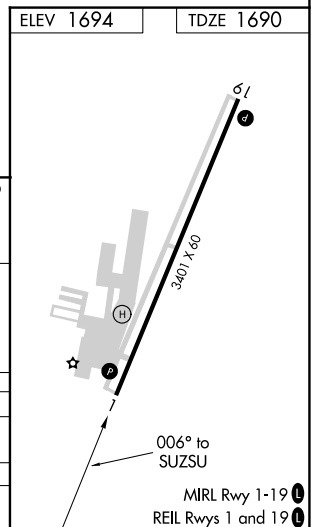
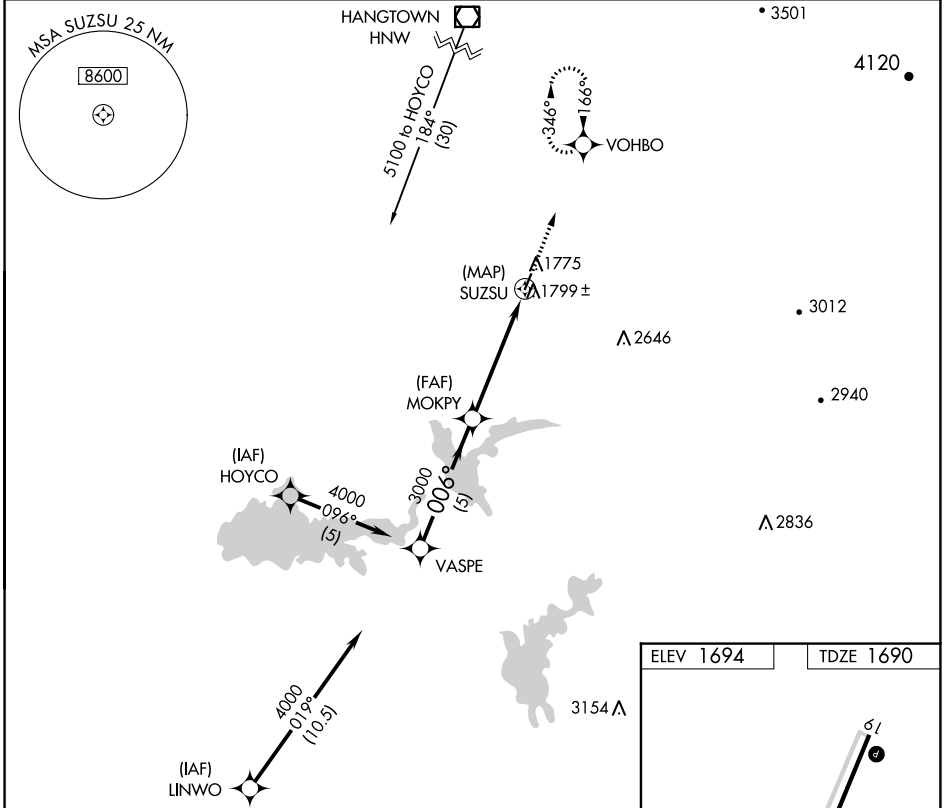
APP CRS	Rwy Idg	<b>3401</b>
<b>006°</b>	TDZE	<b>1690</b>
	Apt Elev	<b>1694</b>

# GPS RWY 1

WESTOVER FLD AMADOR COUNTY (JAQ)

<p><b>▽</b> When local altimeter setting not received, use Sacramento Exec altimeter setting.</p> <p><b>△NA</b></p>	<p>MISSED APPROACH: Climb to 4500 on 006° course to VOHBO and hold.</p>
---	---

<p>AWOS-3</p> <p><b>121.125</b></p>	<p>NORCAL APP CON</p> <p><b>125.1 363.2</b></p>	<p>UNICOM</p> <p><b>123.075 (CTAF) 0</b></p>
-------------------------------------	---	--



<p>Procedure Turn NA</p>	<p>VASPE</p> <p>4000</p> <p>006°</p>		<p>MOKPY</p> <p>3000</p>		<p>SUZSU</p> <p>4500</p> <p>006° crs</p> <p>VOHBO</p>	
	5 NM		5 NM			
CATEGORY	A	B	C	D		
S-1	2060-1	370 (400-1)	NA			
SACRAMENTO EXEC ALTIMETER SETTING MINIMUMS						
S-1	2380-1	690 (700-1)	NA			

SW-2, 22 FEB 2024 to 21 MAR 2024

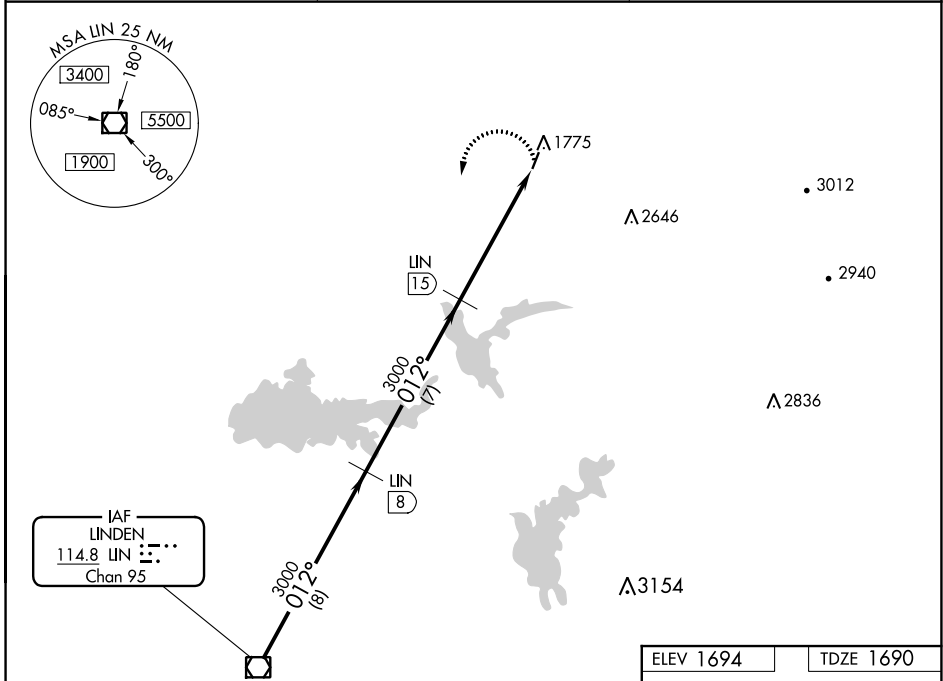
SW-2, 22 FEB 2024 to 21 MAR 2024

VOR/DME LIN <b>114.8</b> Chan <b>95</b>	APP CRS <b>012°</b>	Rwy Idg <b>3401</b> TDZE <b>1690</b> Apt Elev <b>1694</b>
---	------------------------	---

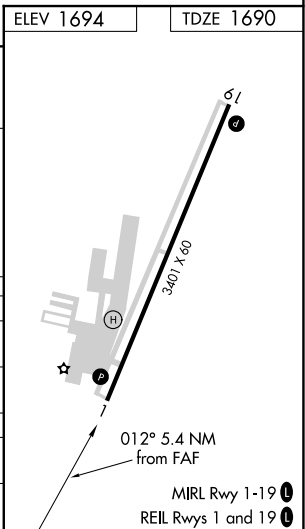
**VOR/DME RWY 1**  
WESTOVER FLD AMADOR COUNTY (JAQ)

**NA** If local altimeter not received, use Sacramento Exec altimeter setting. Circling Rwy 19 NA at night. MISSED APPROACH: Climbing left turn to 3000 via LIN R-012 to LIN VOR/DME.

AWOS-3 <b>121.125</b>	NORCAL APP CON <b>125.1 363.2</b>	UNICOM <b>123.075</b> (CTAF) <b>0</b>
--------------------------	--------------------------------------	--



	LIN VOR/DME	LIN 8	LIN 15	LIN 20.4
	3000	3000	3000	
	012°			
Procedure Turn NA	8 NM	7 NM	5.4 NM	
CATEGORY	A	B	C	D
S-1	2080-1 390 (400-1)	2080-1¼ 390 (400-1¼)		NA
CIRCLING	2200-1 506 (600-1)	2200-1¼ 506 (600-1¼)		NA
SACRAMENTO EXEC ALTIMETER SETTING MINIMUMS				
S-1	2380-1 690 (700-1)	2380-1¼ 690 (700-1¼)		NA
CIRCLING	2520-1 826 (900-1)	2520-1¼ 826 (900-1¼)		NA



SW-2, 22 FEB 2024 to 21 MAR 2024

SW-2, 22 FEB 2024 to 21 MAR 2024