


LOC I-ISO	APP CRS	Rwy Idg	10960
111.3	050°	TDZE	93
		Apt Elev	93

ILS or LOC RWY 5

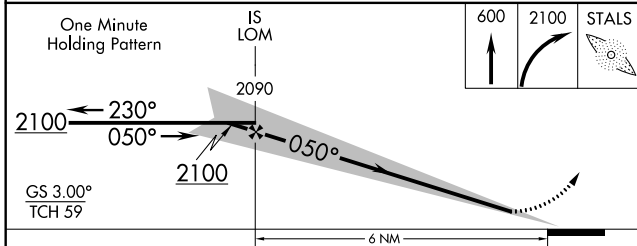
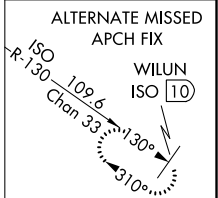
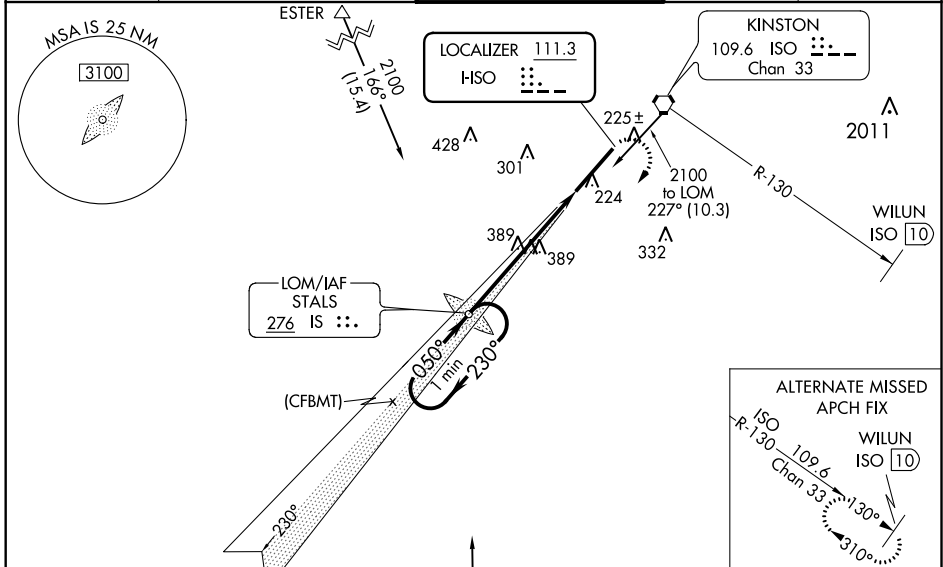
KINSTON RGNL JETPORT AT STALLINGS FLD (ISO)

⚠ ADF Required. When local altimeter setting not received, use Seymour Johnson AFB altimeter setting and increase DA to 336; increase all MDA 60 feet and S-LOC 5 Cats C and D visibility 1/8 mile and Circling Cat D visibility 1/4 mile. For inop MALS, increase S-LOC 5 Cats C and D visibility to 1 1/8 mile. For inop MALS when using Seymour Johnson AFB altimeter setting, increase S-LOC 5 Cats C and D visibility to 1 3/4 mile.
**** RVR 1800 authorized with use of FD or AP or HUD to DA, NA when using Seymour Johnson AFB altimeter setting.**

MALS


MISSED APPROACH:
 Climb to 600 then climbing right turn to 2100 direct STALS LOM and hold.

AWOS-3 132.75	SEYMOUR JOHNSON APP CON * 127.3 273.6	KINSTON TOWER * 120.6 (CTAF) 0 335.55	GND CON 121.9	UNICOM 122.95
-------------------------	---	---	-------------------------	-------------------------



ELEV 93	TDZE 93
---------	---------

REIL Rwy 23
HIRL Rwy 5-23

FAF to MAP 6 NM					
Knots	60	90	120	150	180
Min:Sec	6:00	4:00	3:00	2:24	2:00

CATEGORY	A	B	C	D
S-ILS 5 **		293/24	200 (200-1/2)	
S-LOC 5	640/24	547 (600-1/2)	640/60	547 (600-1 1/4)
C CIRCLING	640-1	547 (600-1)	700-1 3/4 607 (700-1 3/4)	740-2 647 (700-2)

ILS or LOC RWY 5

SE-2, 02 DEC 2021 to 30 DEC 2021

SE-2, 02 DEC 2021 to 30 DEC 2021

WAAS CH 77704 W23A	APP CRS 230°	Rwy ldg 11498 TDZE 87 Apt Elev 93
--	------------------------	--

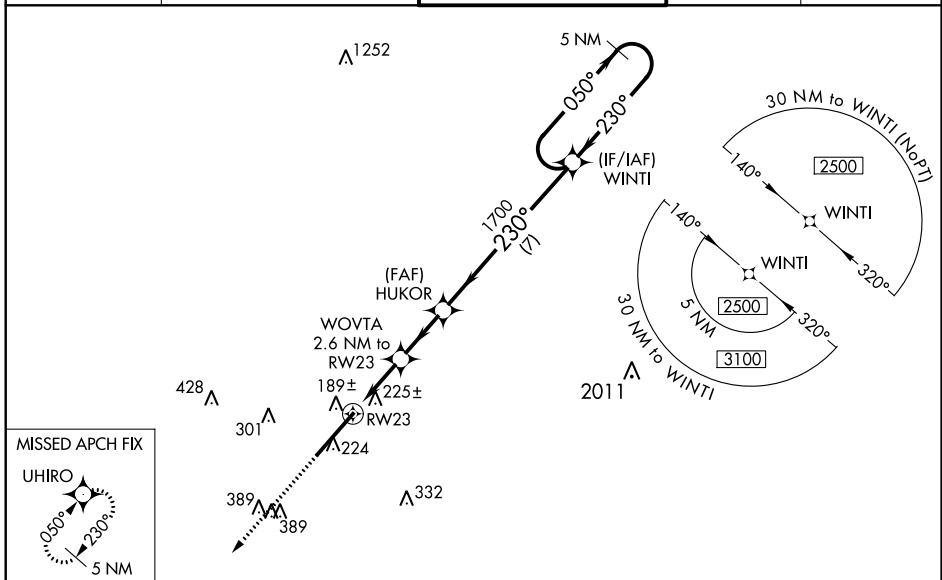
RNAV (GPS) RWY 23

KINSTON RGNL JETPORT AT STALLINGS FLD (ISO)

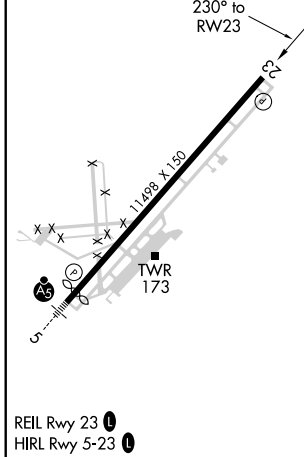
⚠ Baro-VNAV NA when using Seymour Johnson AFB altimeter setting. For uncompensated Baro-VNAV systems, LNAV/VNAV NA below -15°C (5°F) or above 54°C (130°F). DME/DME RNP-0.3 NA. VDP NA with Seymour Johnson AFB altimeter setting. Rwy 23 helicopter visibility reduction below ¾ SM NA. When local altimeter setting not received, use Seymour Johnson AFB altimeter setting and increase LPV DA to 432, LNAV/VNAV DA to 413, and all MDA 60 feet. Increase LPV all Cats and LNAV Cats C and D visibility ¼ mile, and increase LNAV/VNAV all Cats and Circling Cat D visibility ¼ mile.

MISSED APPROACH:
Climb to 2100 direct UHIRO and hold.

AWOS-3 132.75	SEYMOUR JOHNSON APP CON * 127.3 273.6	KINSTON TOWER * 120.6 (CTAF) 335.55	GND CON 121.9	UNICOM 122.95
-------------------------	---	---	-------------------------	-------------------------



ELEV 93	TDZE 87
----------------	----------------



2100 UHIRO	VGSI and RNAV glidepath not coincident (VGSI Angle 3.00/TCH 100).	5 NM Holding Pattern
*LNAV only.	WOVTA 2.6 NM to RW23	HUKOR 1700
	*1.2 NM to RW23	230°
	RW23 960*	1700
	1.2 NM	1.6
	2.3	7 NM
	050° →	← 230°
	2500	GP 3.00° TCH 50

CATEGORY	A	B	C	D
LPV DA	390-1 303 (300-1)			
LNAV/VNAV DA	437-1½ 350 (400-1½)			
LNAV MDA	540-1	453 (500-1)	540-1¾	453 (500-1¾)
C CIRCLING	580-1	487 (500-1)	700-1¾ 607 (700-1¾)	740-2 647 (700-2)

RNAV (GPS) RWY 23

SE-2, 02 DEC 2021 to 30 DEC 2021


SE-2, 02 DEC 2021 to 30 DEC 2021

WAAS CH 82004 W05A	APP CRS 050°	Rwy ldg 10960 TDZE 93 Apt Elev 93
--	------------------------	--

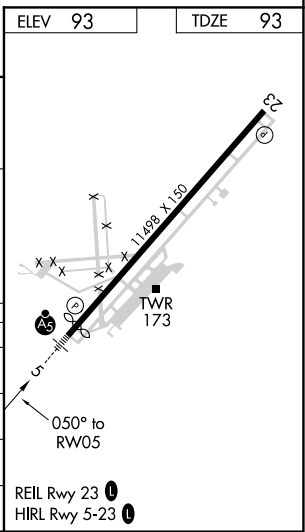
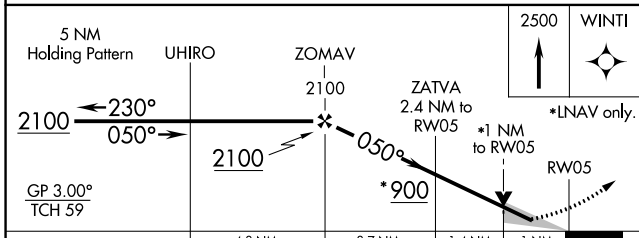
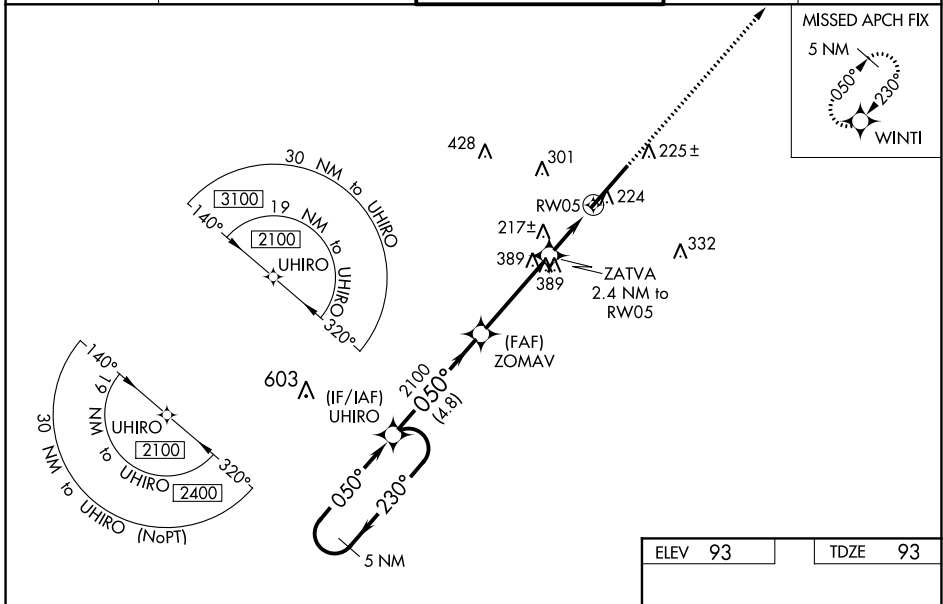
RNAV (GPS) RWY 5

KINSTON RGNL JETPORT AT STALLINGS FLD (ISO)

⚠ Baro-VNAV NA when using Seymour Johnson AFB altimeter setting. For uncompensated Baro-VNAV systems, LNAV/VNAV NA below -15°C (5°F) or above 54°C (130°F).
⚠ DME/DME RNP-0.3 NA. VDP NA when using Seymour Johnson AFB altimeter setting. When local altimeter setting not received, use Seymour Johnson AFB altimeter setting and increase all DAs 43 feet and all MDAs 60 feet. Increase LNAV/VNAV all Cats visibility to RVR 2600, increase LNAV Cats C and D visibility to RVR 4000, and Circling Cat D visibility to 2¼mile. For inop MALSR, increase LNAV/VNAV all Cats visibility to RVR 4500 and LNAV Cats A and B visibility to RVR 5500 and Cats C and D to RVR 6000. For inop MALSR when using Seymour Johnson AFB altimeter setting, increase LNAV Cats A and B visibility to RVR 5500 and Cats C and D to 1½ mile.

MALSR

MISSED APPROACH:
 Climb to 2500 direct WINTI and hold.

AWOS-3 132.75	SEYMOUR JOHNSON APP CON * 127.3 273.6	KINSTON TOWER * 120.6 (CTAF) 0 335.55	GND CON 121.9	UNICOM 122.95
-------------------------	---	--	-------------------------	-------------------------



CATEGORY	A	B	C	D
LPV DA		293/24	200 (200-½)	
LNAV/VNAV DA		368/24	275 (300-½)	
LNAV MDA	480/24	387 (400-½)	480/35	387 (400-⅝)
C CIRCLING	580-1	487 (500-1)	700-1¾ 607 (700-1¾)	740-2 647 (700-2)

RNAV (GPS) RWY 5

SE-2, 02 DEC 2021 to 30 DEC 2021

SE-2, 02 DEC 2021 to 30 DEC 2021