

LOC I-INT 110.3	APP CRS 332°	Rwy Idg 6655
		TDZE 941
		Apt Elev 969

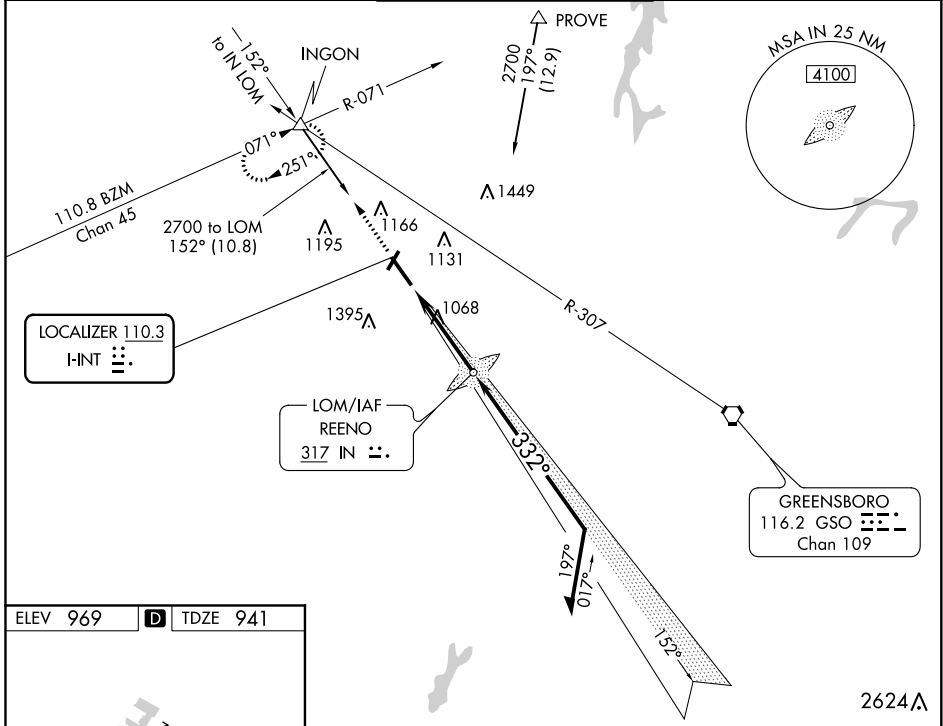
ILS or LOC RWY 33

SMITH REYNOLDS (INT)

⚠ For inoperative MALSRS, when using Piedmont Triad Intl altimeter setting, increase S-ILS 33 visibility to RVR 5000 all Cats. When local altimeter setting not received, use Piedmont Triad Intl altimeter setting and increase all DA 39 feet and all MDA 40 feet; increase S-LOC 33 Cat C visibility to RVR 4000 and Circling Cat D ¼ mile. ADF Required. Circling Rwy 4, 22 NA at night.

MALSRS **MISSED APPROACH:** Climb to 3500 via 332° bearing from REENO LOM to INGON INT and hold, continue climb-in-hold to 3500.

ATIS 121.3	GREENSBORO APP CON 124.35 269.225	WINSTON-SALEM TOWER ★ 123.75 (CTAF) 0 257.8	GND CON 128.25	UNICOM 122.95
----------------------	---------------------------------------------	-------------------------------------------------------	--------------------------	-------------------------



ELEV 969	D	TDZE 941			
MIRL Rwy 4-22	REIL Rwy 15	HIRL Rwy 15-33			
		332° 3.9 NM from FAF			
FAF to MAP 3.9 NM					
Knots	60	90	120	150	180
Min:Sec	3:54	2:36	1:57	1:34	1:18

3500	INGON	IN LOM	Remain within 10 NM	
↑	△	2212	2600	
IN 332°		2500	GS 3.00° TCH 57	
3.9 NM				
CATEGORY	A	B	C	D
S-ILS 33		1141/24	200 (200-½)	
S-LOC 33		1320/24	379 (400-½)	NA
CIRCLING	1480-1 511 (600-1)	1580-1 611 (700-1)	1580-1¾ 611 (700-1¾)	NA

SE-2, 25 FEB 2021 to 25 MAR 2021

SE-2, 25 FEB 2021 to 25 MAR 2021

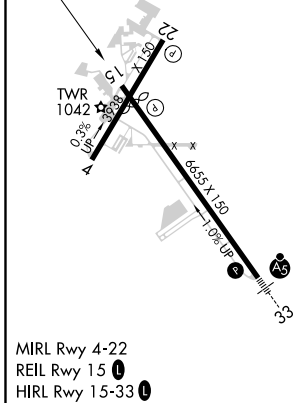
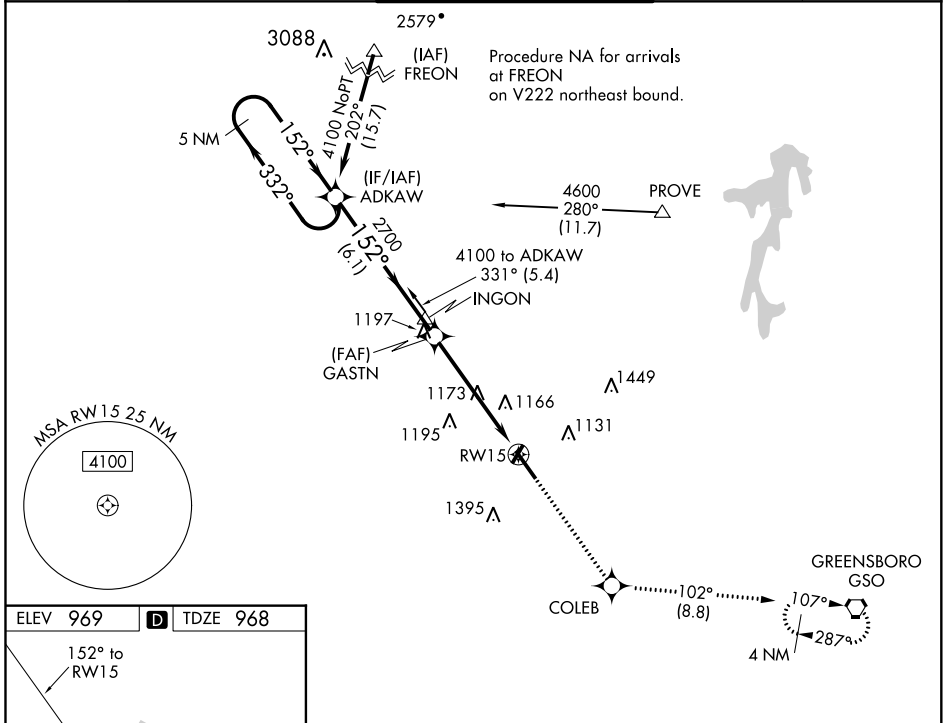
APP CRS	Rwy Idg	6069
152°	TDZE	968
	Apt Elev	969

RNAV (GPS) RWY 15

SMITH REYNOLDS (INT)

RNP APCH.	<p>When local altimeter setting not received, use Piedmont Triad Intl altimeter setting and increase all MDA 40 feet and Circling Cat D visibility ¼ mile. Circling Rwy 4, 22 NA at night. Rwy 15 helicopter visibility reduction below ¾ SM NA.</p>	<p>MISSED APPROACH: Climb to 3000 direct COLEB and on track 102° to GSO VORTAC and hold.</p>
-----------	------------------------------------------------------------------------------------------------------------------------------------------------------------------------------------------------------------------------------------------------------	--------------------------------------------------------------------------------------------------

ATIS 121.3	GREENSBORO APP CON 124.35 269.225	WINSTON-SALEM TOWER ★ 123.75 (CTAF) 0 257.8	GND CON 128.25	UNICOM 122.95
----------------------	---------------------------------------------	-------------------------------------------------------	--------------------------	-------------------------



VGSI and descent angles not coincident (VGSI Angle 3.00/TCH 38).	3000	COLEB	tr 102°	GSO
5 NM Holding Pattern				
4100	ADKAW	GASTN		RW15
6.1 NM	5.2 NM			

CATEGORY	A	B	C	D
LNAV MDA	1440-1	472 (500-1)	1440-1 ³ / ₈	472 (500-1 ³ / ₈)
CIRCLING	1480-1 511 (600-1)	1580-1 611 (700-1)	1580-1 ³ / ₄ 611 (700-1 ³ / ₄)	1740-2 ¹ / ₂ 771 (800-2 ¹ / ₂)

SE-2, 25 FEB 2021 to 25 MAR 2021


SE-2, 25 FEB 2021 to 25 MAR 2021

WAAS CH 82011 W33A	APP CRS 332°	Rwy Idg TDZE 941 Apt Elev 969
----------------------------------------	------------------------	---------------------------------------------------

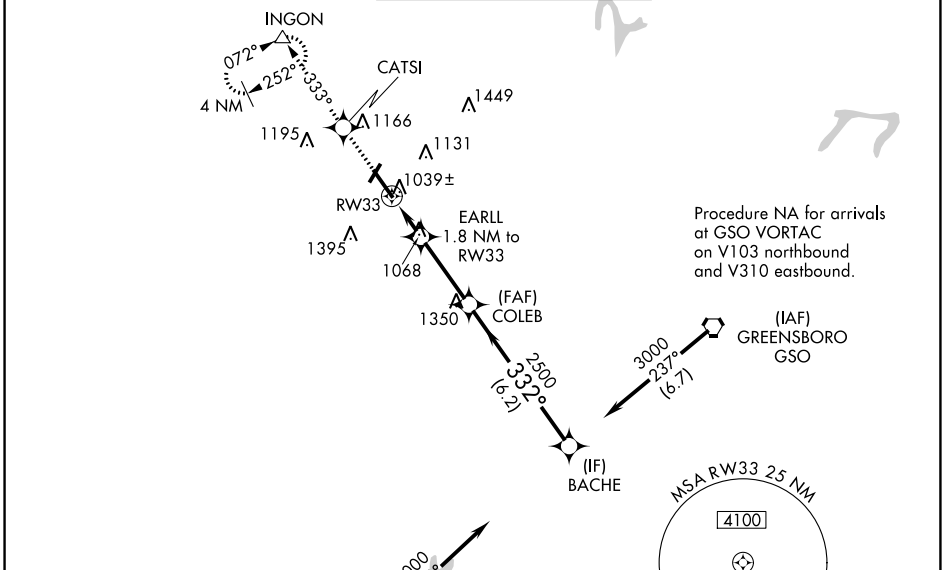
RNAV (GPS) RWY 33

SMITH REYNOLDS (INT)

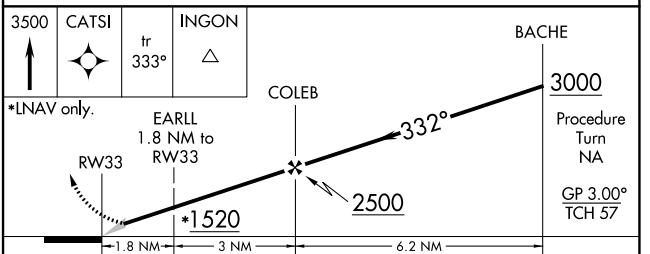
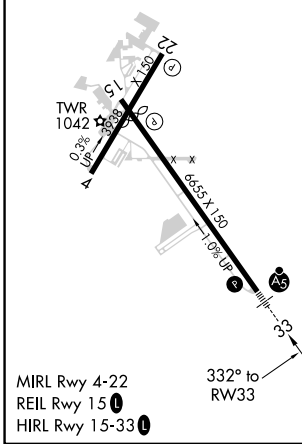
⚠ For inoperative MALSR, when using Piedmont Triad Intl altimeter setting, increase LPV all Cats visibility to 1 mile. Baro-VNAV NA when using Piedmont Triad Intl altimeter setting. For uncompensated Baro-VNAV systems, LNAV/VNAV NA below -1.6°C (4°F) or above 47°C (116°F). DME/DME RNP-0.3 NA. When local altimeter setting not received, use Piedmont Triad Intl altimeter setting and increase all DA 39 feet, and all MDA 40 feet, increase LNAV/VNAV all Cats and Circling Cat D visibility ¼ mile. Circling Rwy 4, 22 NA at night. **RVR 1800 authorized with use of FD or AP or HUD to DA, NA when using Piedmont Triad Intl altimeter setting.

MALSR

MISSED APPROACH:
 Climb to 3500 direct CATSI and on 333° track to INGON and hold, continue climb-in-hold to 3500.

ATIS 121.3	GREENSBORO APP CON 124.35 269.225	WINSTON-SALEM TOWER * 123.75 (CTAF) 0 257.8	GND CON 128.25	UNICOM 122.95
----------------------	---------------------------------------------	-------------------------------------------------------	--------------------------	-------------------------



ELEV 969	D	TDZE 941
----------	----------	----------



CATEGORY	A	B	C	D
LPV DA**	1141/24 200 (200-1/2)			
LNAV/VNAV DA	1407/60 466 (500-1¼)			
LNAV MDA	1380/24	439 (500-½)	1380/40 439 (500-¾)	1380/50 439 (500-1)
CIRCLING	1480-1 511 (600-1)	1580-1 611 (700-1)	1580-1¼ 611 (700-1¼)	1740-2½ 771 (800-2½)

SE-2, 25 FEB 2021 to 25 MAR 2021

SE-2, 25 FEB 2021 to 25 MAR 2021