

RNAV (GPS) RWY 1

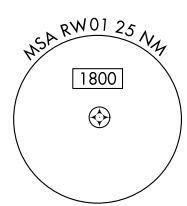
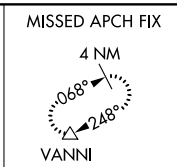
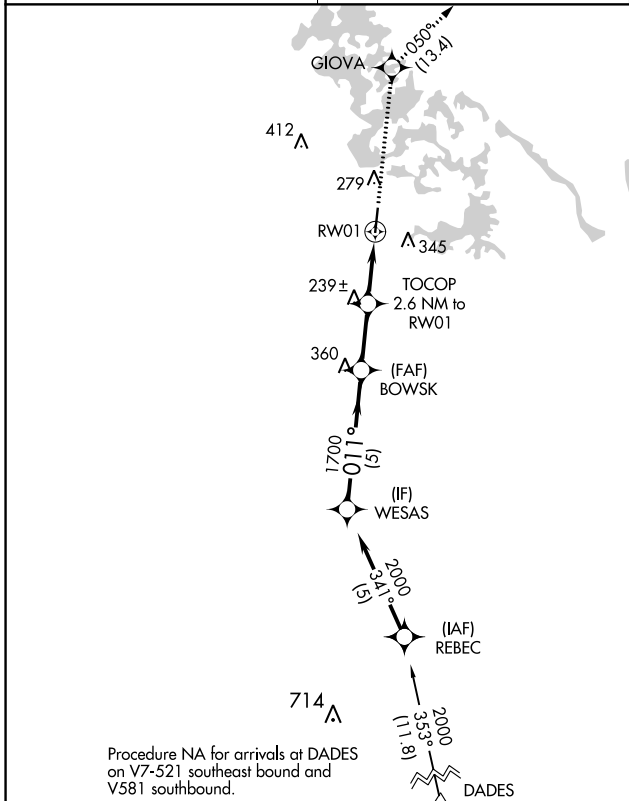
INVERNESS (INF)

APP CRS	Rwy Idg	5000
011°	TDZE	65
	Apt Elev	65

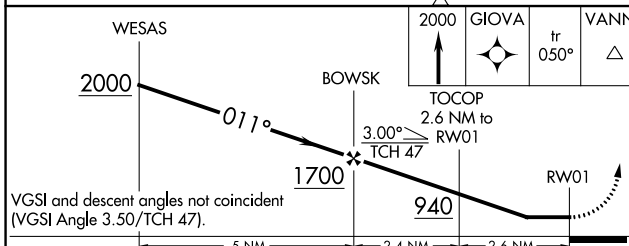
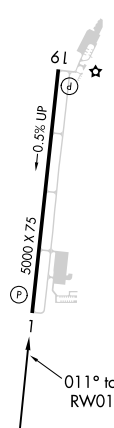
⚠ When local altimeter setting not received, use Ocala altimeter setting and increase all MDA 60 feet; and increase LNAV Cat C visibility 1/8 mile and Circling Cat C visibility 1/4 mile.
⚠ DME/DME RNP-0.3 NA. Visibility reduction by helicopters NA. Procedure NA at night.

MISSED APPROACH: Climb to 2000 direct GIOVA and on track 050° to VANNI and hold.

AWOS-3 119.975	JACKSONVILLE APP CON 118.6 251.15	UNICOM 122.725 (CTAF) 1
--------------------------	---	-----------------------------------



ELEV 65	TDZE 65
MIRL Rwy 1-19 1	REIL Rwys 1 and 19 1



CATEGORY	A	B	C	D
LNAV MDA	500-1	435 (500-1)	500-1 1/4 435 (500-1 1/4)	NA
CIRCLING	660-1	595 (600-1)	660-1 1/2 595 (600-1 1/2)	NA

SE-3, 19 MAY 2022 to 16 JUN 2022

SE-3, 19 MAY 2022 to 16 JUN 2022

APP CRS 191°	Rwy Idg TDZE Apt Elev	5000 54 65
------------------------	-----------------------------	---------------------------------------

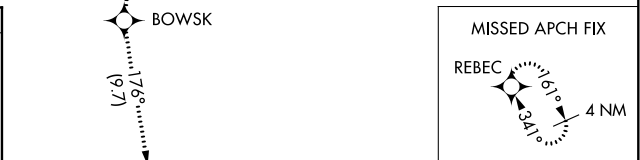
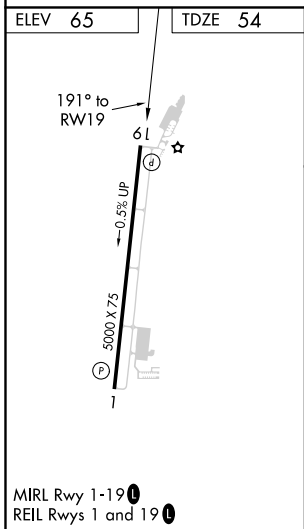
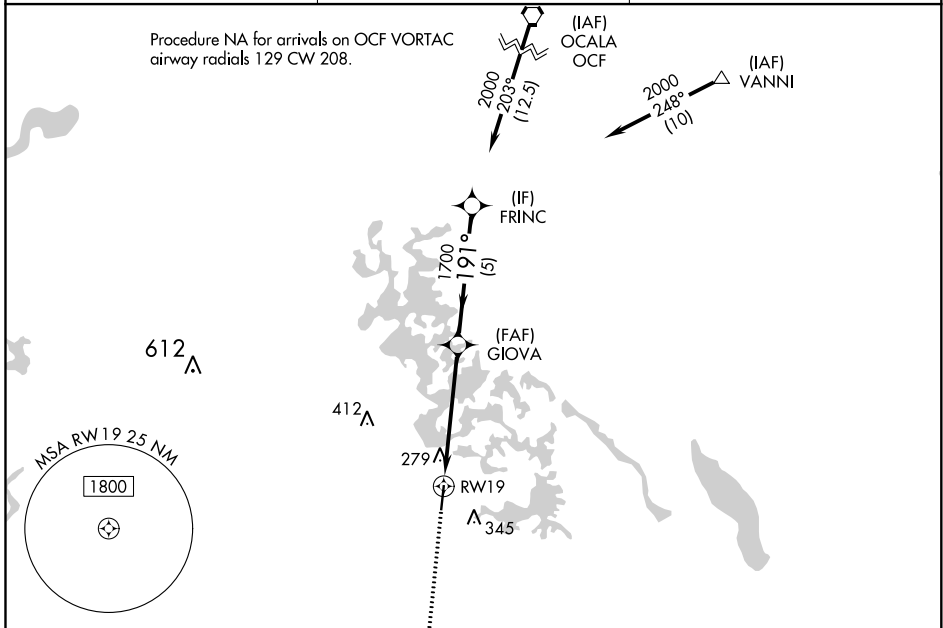
RNAV (GPS) RWY 19

INVERNESS (INF')

RNP APCH.

MISSED APPROACH: Climb to 2000 direct BOWSK and on track 176° to REBEC and hold.

AWOS-3 119.975	JACKSONVILLE APP CON 118.6 251.15	UNICOM 122.725 (CTAF)
--------------------------	---	---------------------------------



2000	BOWSK	REBEC	Visual Segment - Obstacles.		FRINC
↑	\star	tr 176°	\star		\star
	RWY 19		GIOVA	1700	2000
	5.1 NM		5 NM		
CATEGORY	A	B	C	D	
LNAV MDA	580-1	526 (600-1)	580-1½ 526 (600-1½)	NA	
CIRCLING	660-1	595 (600-1)	660-1½ 595 (600-1½)	NA	

SE-3, 19 MAY 2022 to 16 JUN 2022

SE-3, 19 MAY 2022 to 16 JUN 2022