

LOC I-ILG 110.3	APP CRS 015°	Rwy Idg 7012 TDZE 76 Apt Elev 80
---------------------------	------------------------	--

ILS or LOC RWY 1

NEW CASTLE (ILG)

ADF required.

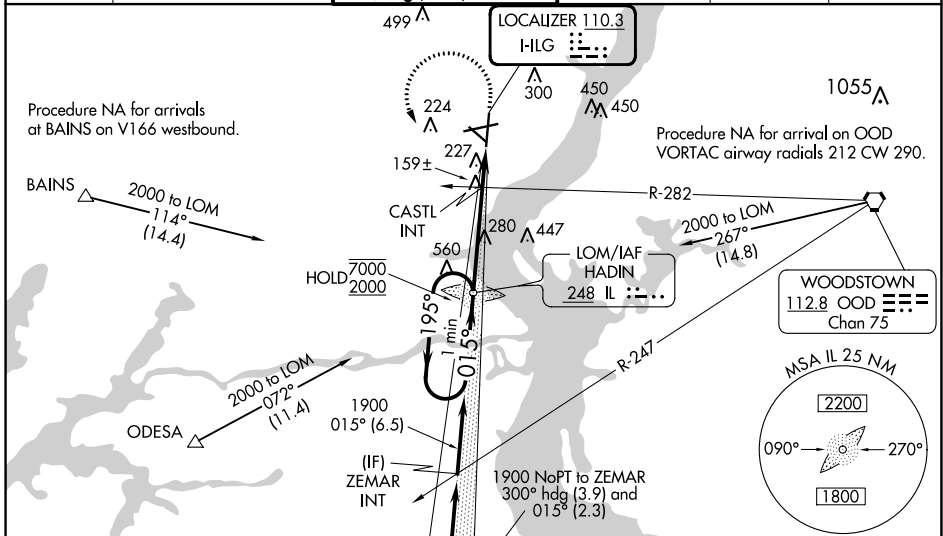
RADAR required to define BLARE.

When local altimeter setting not received, use Philadelphia altimeter setting increase all DA to 330 feet and all MDA 60 feet; increase S-LOC 1 Cats C/D visibility to 1½ SM and Circling visibility Cat C to 1¾ SM, Cat D to 2½ SM; increase CASTL fix minimums S-LOC 1 Cats C/D visibility to RVR 5000 and Circling Cat D to 2½ SM. For inop ALS increase S-LOC 1 Cat C/D to 1¾ SM for CASTL fix minimums, increase S-LOC 1 Cats C/D visibility to 1¾ SM. For inop ALS when using Philadelphia Intl altimeter setting, increase S-LOC 1 Cat C and D visibility to 1¾ SM; CASTL fix minimums S-LOC 1 Cats C/D to 1¾ SM. **RVR 1800 authorized with use of FD or AP or HUD to DA (NA when using Philadelphia Intl altimeter setting).



MISSED APPROACH:
Climb to 900 then climbing left turn to 2000 direct HADIN LOM and hold.

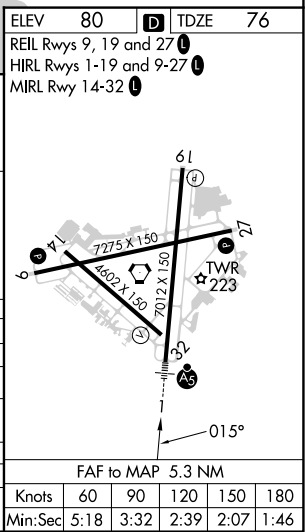
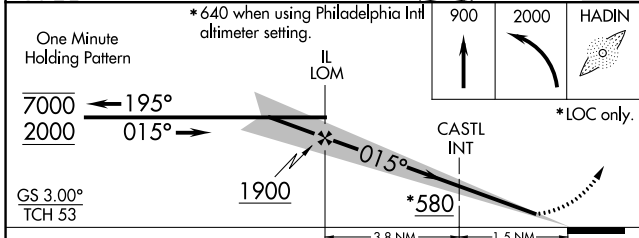
ATIS 123.95	PHILADELPHIA APP CON 118.35 323.1	WILMINGTON TOWER * 126.0 (CTAF) 352.05	GND CON 121.7 275.8	CLNC DEL 119.95	UNICOM 122.95
-----------------------	---	--	-------------------------------	---------------------------	-------------------------



NE-3, 22 FEB 2024 to 21 MAR 2024

NE-3, 22 FEB 2024 to 21 MAR 2024

ELEV 80	TDZE 76
REIL Rwys 9, 19 and 27	
HIRL Rwys 1-19 and 9-27	
MIRL Rwy 14-32	



CATEGORY	A	B	C	D
S-ILS 1**	276/24 200 (200-½)			
S-LOC 1	580/24	504 (500-½)	580/55	504 (500-1)
CIRCLING	580-1	500 (500-1)	600-1½ 520 (600-1½)	800-2¼ 720 (800-2¼)
CASTL FIX MINIMUMS (DUAL VOR RECEIVERS REQUIRED)				
S-LOC 1	480/24	404 (400-½)	480/40	404 (400-¾)
CIRCLING	540-1 460 (500-1)	560-1 480 (500-1)	600-1½ 520 (600-1½)	800-2¼ 720 (800-2¼)


FAF to MAP 5.3 NM					
Knots	60	90	120	150	180
Min:Sec	5:18	3:32	2:39	2:07	1:46

WAAS CH 65815 W01A	APP CRS 015°	Rwy Idg 7012 TDZE 76 Apt Elev 80
--	------------------------	---

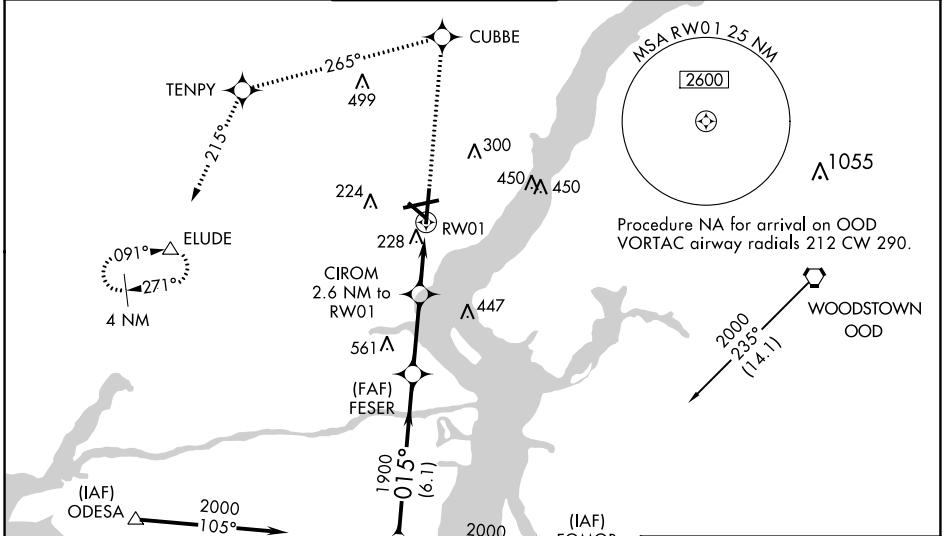
RNAV (GPS) RWY 1

NEW CASTLE (ILG)

⚠ Inoperative table does not apply to LPV all Cats and LNAV Cats A and B. Baro-VNAV NA when using Philadelphia Intl altimeter setting. For uncompensated Baro-VNAV systems, LNAV/VNAV NA below -15°C (5°F) or above 49°C (120°F). DME/DME RNP-0.3 NA. Visibility reduction by helicopters NA. When local altimeter setting not received, use Philadelphia Intl altimeter setting: increase LPV DA to 380, LNAV/VNAV DA to 579, and all MDAs 60 feet; increase LNAV/VNAV all Cats visibility to RVR 6000 and Circling Cat D visibility ¼ SM. For inoperative MALSR, increase LNAV Cats C and D visibility ¼ mile. For inoperative MALSR, when using Philadelphia Intl altimeter setting, increase LNAV visibility Cat C ¼ mile.

MALSR

MISSED APPROACH: Climb to 2000 direct CUBBE and left turn via track 265° to TENPY and via track 214° to ELUDE and hold.

ATIS 123.95	PHILADELPHIA APP CON 118.35 323.1	WILMINGTON TOWER* 126.0 (CTAF) 352.05	GND CON 121.7 275.8	CLNC DEL 119.95	UNICOM 122.95
-----------------------	---	--	-------------------------------	---------------------------	-------------------------

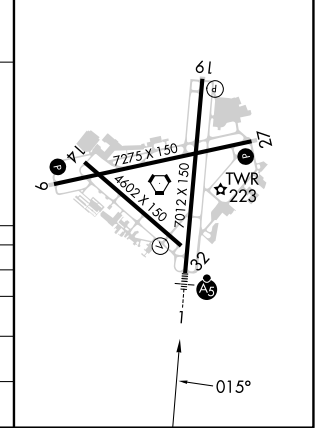
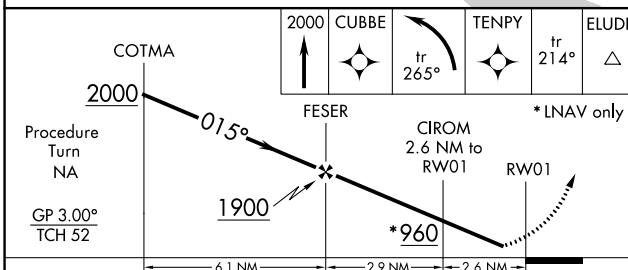


NE-3, 22 FEB 2024 to 21 MAR 2024

NE-3, 22 FEB 2024 to 21 MAR 2024

ELEV 80	D TDZE 76
---------	------------------

REIL Rwy 9, 19 and 27
 HIRL Rwy 1-19 and 9-27
 MRL Rwy 14-32



CATEGORY	A	B	C	D
LPV DA		326/50	250 (300-1)	
LNAV/VNAV DA		525/50	449 (500-1)	
LNAV MDA		480/50	404 (400-1)	
CIRCLING	540-1 460 (500-1)	560-1 480 (500-1)	600-1½ 520 (600-1½)	800-2¼ 720 (800-2¼)

WAAS CH 82115 W19A	APP CRS 195°	Rwy Idg 7012 TDZE 71 Apt Elev 80
--	------------------------	---

RNAV (GPS) RWY 19

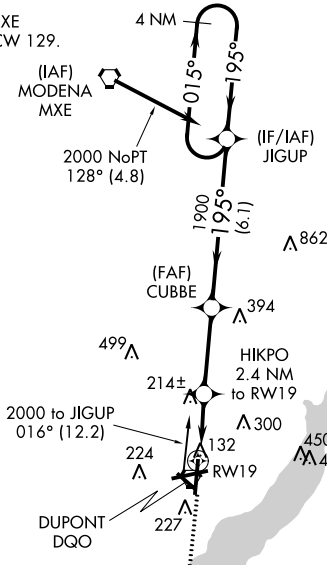
NEW CASTLE (ILG)

▼ Baro-VNAV NA when using Philadelphia Intl altimeter setting. For uncompensated Baro-VNAV systems, LNAV/VNAV NA below -15°C (5°F) or above 49°C (120°F). DME/DME RNP-0.3 NA.
▲ Visibility reduction by helicopters NA. When local altimeter setting not received, use Philadelphia Intl altimeter setting: increase LPV DA to 425, LNAV/VNAV DA to 592, and all MDAs 60 feet; increase LPV all Cats and LNAV and Circling Cat D visibility ¼ SM.

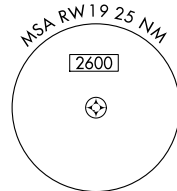
MISSED APPROACH:
Climb to 2000 direct FESER and hold.

ATIS 123.95	PHILADELPHIA APP CON 118.35 323.1	WILMINGTON TOWER* 126.0 (CTAF) 352.05	GND CON 121.7 275.8	CLNC DEL 119.95	UNICOM 122.95
-----------------------	---	---	-------------------------------	---------------------------	-------------------------

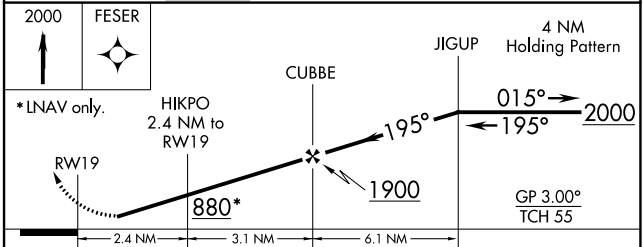
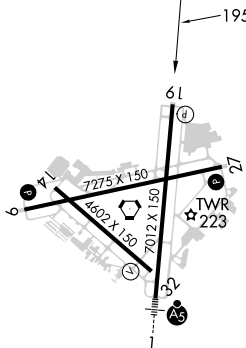
Procedure NA for arrival on MXE
VORTAC airway radials 056 CW 129.



Procedure NA for arrival on DQO VORTAC
airway radials 053 CW 068.



ELEV 80	D	TDZE 71
---------	----------	---------



CATEGORY	A	B	C	D
LPV DA	371-1 300 (300-1)			
LNAV/VNAV DA	538-1¾ 467 (500-1¾)			
LNAV MDA	480-1	409 (400-1)	480-1¼	409 (400-1¼)
CIRCLING	540-1 460 (500-1)	560-1 480 (500-1)	600-1½ 520 (600-1½)	800-2¼ 720 (800-2¼)

REIL Rwy 9, 19 and 27
HIRL Rwy 1-19 and 9-27
MIRL Rwy 14-32

NE-3, 22 FEB 2024 to 21 MAR 2024

NE-3, 22 FEB 2024 to 21 MAR 2024

WAAS CH 53515 W27A	APP CRS 268°	Rwy ldg 7000 TDZE 72 Apt Elev 80
--	------------------------	---

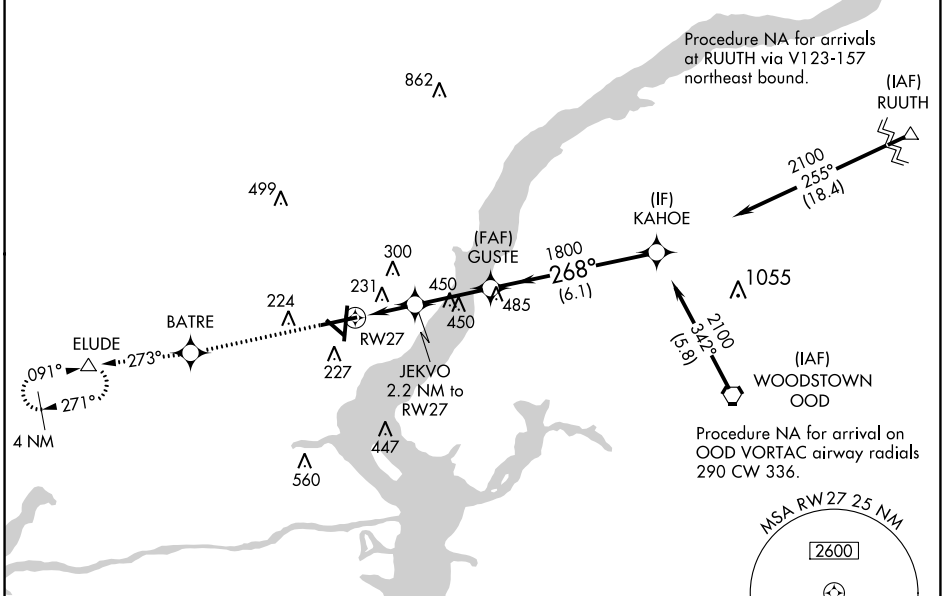
RNAV (GPS) RWY 27

NEW CASTLE (ILG)

Baro-VNAV NA when using Philadelphia Intl altimeter setting. For uncompensated Baro-VNAV systems, LNAV/VNAV DA NA below -15°C (5°F) or above 39°C (102°F). DME/DME RNP-0.3 NA. Helicopter visibility reduction below ¼ SM NA. When local altimeter setting not received, use Philadelphia Intl altimeter setting: increase LPV DA to 480, LNAV/VNAV DA to 584, and all MDAs 60 feet; increase LPV all Cats and LNAV Cat C/D visibility ½ SM and LNAV/VNAV all Cats and Circling Cat D visibility ¼ SM.

MISSED APPROACH: Climb to 2000 direct BATRE and via track 273° to ELUDE and hold.

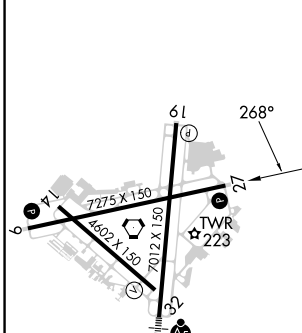
ATIS 123.95	PHILADELPHIA APP CON 118.35 323.1	WILMINGTON TOWER* 126.0 (CTAF) 352.05	GND CON 121.7 275.8	CLNC DEL 119.95	UNICOM 122.95
-----------------------	---	--	-------------------------------	---------------------------	-------------------------



NE-3, 22 FEB 2024 to 21 MAR 2024

NE-3, 22 FEB 2024 to 21 MAR 2024

ELEV 80	D	TDZE 72
---------	----------	---------



2000	BATRE	tr 273°	ELUDE	VGSI and RNAV glidepath not coincident (VGSI Angle 3.00/TCH 54).	Procedure Turn NA
				KAHOE	2100
				860*	1800
				2.2 NM	2.8 NM
				6.1 NM	

CATEGORY	A	B	C	D
LPV DA	426-1 1/8	354 (400-1 1/8)		
LNAV/VNAV DA	530-1 3/8	458 (500-1 3/8)		
LNAV MDA	500-1	428 (500-1)	500-1 1/4	428 (500-1 1/4)
CIRCLING	540-1 460 (500-1)	560-1 480 (500-1)	600-1 1/2 520 (600-1 1/2)	800-2 1/4 720 (800-2 1/4)

REIL Rwy 9, 19 and 27
HIRL Rwy 1-19 and 9-27
MIRL Rwy 14-32

WAAS CH 49015 W09A	APP CRS 088°	Rwy Idg TDZE Apt Elev	7000 80 80
--	------------------------	-----------------------------	---------------------------------------

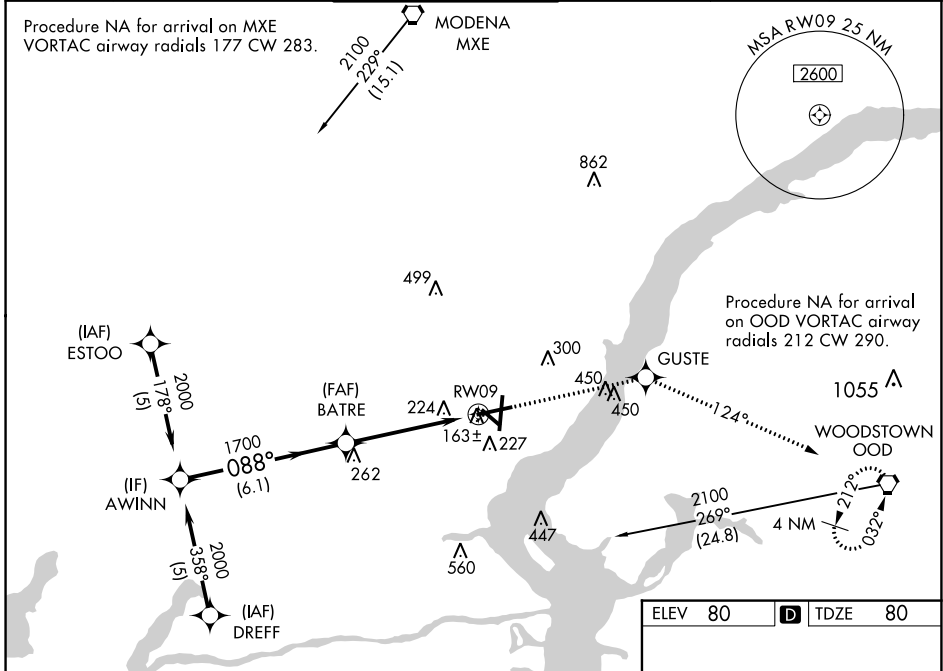
RNAV (GPS) RWY 9

NEW CASTLE (ILG)

⚠ For uncompensated Baro-VNAV systems, LNAV/VNAV NA below -1.5°C (5°F) or above 48°C (118°F). DME/DME RNP-0.3 NA. Helicopter visibility reduction below ¾ mile NA. VDP and Baro-VNAV NA when using Philadelphia Intl altimeter setting. When local altimeter setting not received, use Philadelphia Intl altimeter setting: increase LPV DA to 448, LNAV/VNAV DA to 568, and all MDAs 60 feet; increase LPV all Cats and Circling Cat D visibility ¼ SM and LNAV/VNAV all Cats visibility ½ SM.

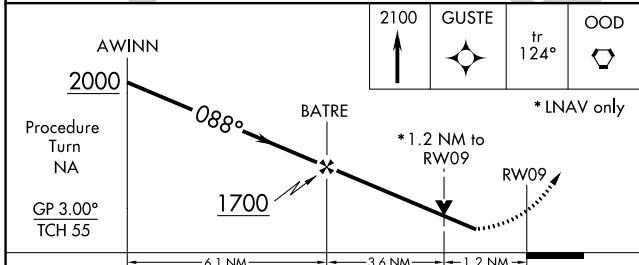
⚠ MISSED APPROACH: Climb to 2100 direct GUSTE and via track 124° to OOD VORTAC and hold.

ATIS 123.95	PHILADELPHIA APP CON 118.35 323.1	WILMINGTON TOWER ★ 126.0 (CTAF) 352.05	GND CON 121.7 275.8	CLNC DEL 119.95	UNICOM 122.95
-----------------------	---	---	-------------------------------	---------------------------	-------------------------



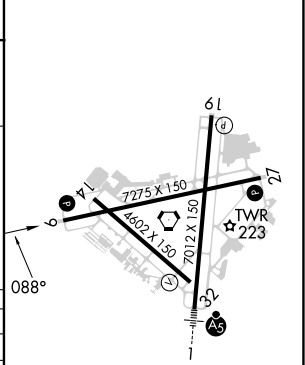
NE-3, 22 FEB 2024 to 21 MAR 2024

NE-3, 22 FEB 2024 to 21 MAR 2024



ELEV 80	D TDZE 80
---------	------------------

CATEGORY	A	B	C	D
LPV DA	394-1 314 (400-1)			
LNAV/ VNAV	521-1½ 441 (500-1½)			
LNAV MDA	520-1 440 (500-1)		520-1¼ 440 (500-1½)	
CIRCLING	540-1 460 (500-1)	560-1 480 (500-1)	600-1½ 520 (600-1½)	800-2¼ 720 (800-2¼)



REIL Rwy 9, 19 and 27
HIRL Rwy 1-19 and 9-27
MIRL Rwy 14-32

VORTAC DQO 114.0 Chan 87	APP CRS 261°	Rwy Idg 7000 TDZE 72 Apt Elev 80
--	------------------------	---

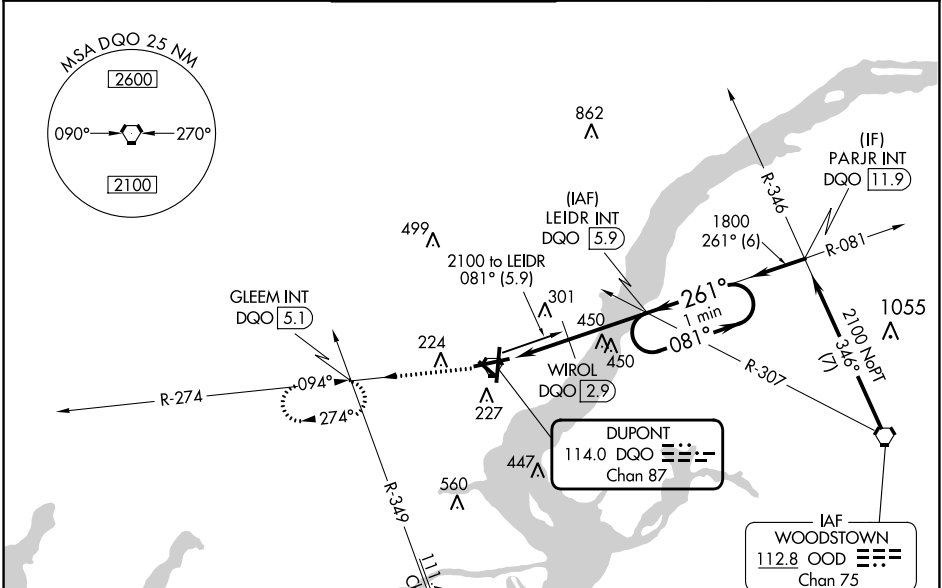
VOR RWY 27

NEW CASTLE (ILG)

⚠ Helicopter visibility reduction below 3/4 SM NA. When local altimeter setting not received, use Philadelphia Intl altimeter setting and increase all MDAs 60 feet; increase S-27 Cat B and Circling Cat C/D visibility 1/4 SM and S-27 Cat C/D visibility 1/2 SM; WIROL fix minimums S-27 increase Cat C/D and Circling Cat D visibility 1/4 SM.

MISSED APPROACH: Climb to 2000 on DQO VORTAC R-274 to GLEEM INT/DQO 5.1 DME and hold.

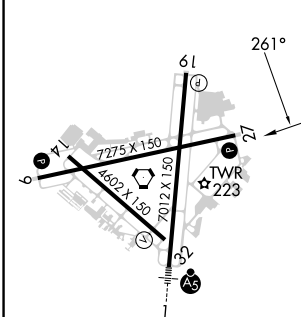
ATIS 123.95	PHILADELPHIA APP CON 118.35 323.1	WILMINGTON TOWER * 126.00 (CTAF) 352.05	GND CON 121.7 275.8	CLNC DEL 119.95	UNICOM 122.95
-----------------------	---	---	-------------------------------	---------------------------	-------------------------



NE-3, 22 FEB 2024 to 21 MAR 2024

NE-3, 22 FEB 2024 to 21 MAR 2024

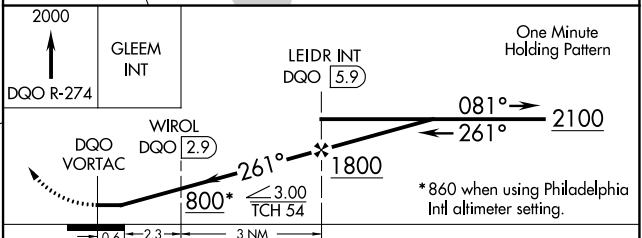
ELEV 80	D	TDZE 72
---------	----------	---------



REIL Rwy 9, 19 and 27 **Ⓛ**
 HIRL Rwy 1-19 and 9-27 **Ⓛ**
 MIRL Rwy 14-32 **Ⓛ**

FAF to MAP 5.9 NM

Knots	60	90	120	150	180
Min:Sec	5:54	3:56	2:57	2:22	1:58



CATEGORY	A	B	C	D
S-27	800-1 728 (800-1)		800-2 728 (800-2)	
CIRCLING	800-1 720 (800-1)		800-2 720 (800-2)	800-2 1/4 720 (800-2 1/4)
WIROL FIX MINIMUMS (DME REQUIRED)				
S-27	560-1 488 (500-1)		560-1 3/8 488 (500-1 3/8)	
CIRCLING	560-1 480 (500-1)		600-1 1/2 520 (600-1 1/2)	800-2 1/4 720 (800-2 1/4)

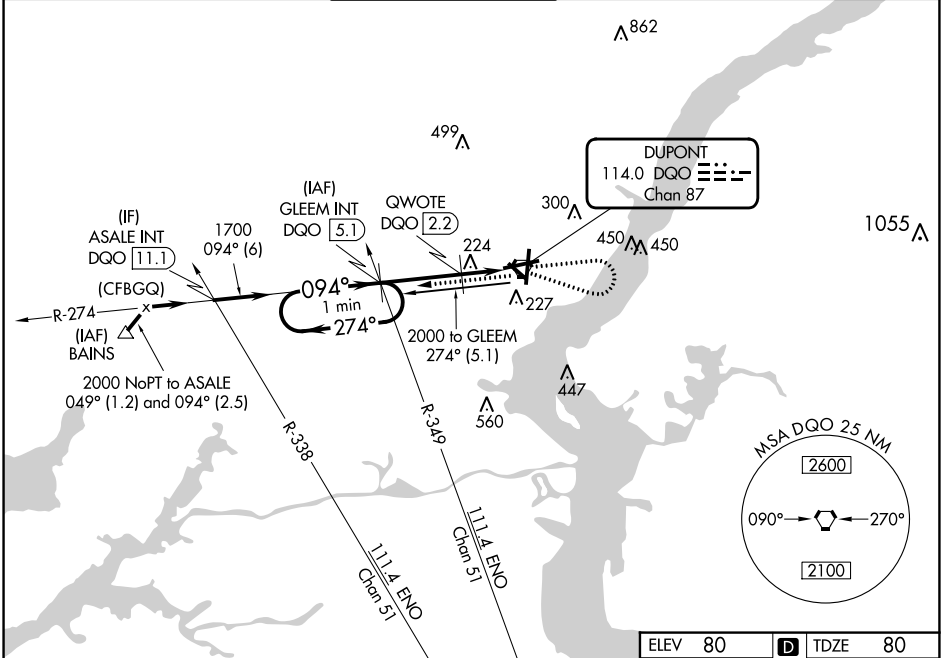
* 860 when using Philadelphia Intl altimeter setting.

VORTAC DQO 114.0 Chan 87	APP CRS 094°	Rwy Idg 7000 TDZE 80 Apt Elev 80
--	------------------------	---

VOR RWY 9

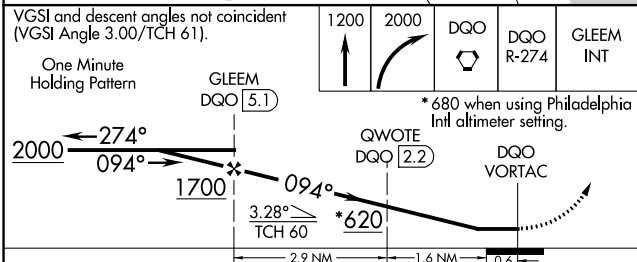
NEW CASTLE (ILG)

<p>Visibility reduction by helicopters NA. When local altimeter setting not received, use Philadelphia Intl altimeter setting and increase all MDAs 60 feet; increase S-9 Cat C/D and Circling Cat D visibility 1/4 SM.</p>	<p>MISSED APPROACH: Climb to 1200 then climbing right turn to 2000 direct DQO VORTAC then on DQO VORTAC R-274 to GLEEM INT/DQO 5.1 DME and hold.</p>				
	ATIS 123.95	PHILADELPHIA APP CON 118.35 323.1	WILMINGTON TOWER * 126.0 (CTAF) 352.05	GND CON 121.7 275.8	CLNC DEL 119.95



NE-3, 22 FEB 2024 to 21 MAR 2024

NE-3, 22 FEB 2024 to 21 MAR 2024



ELEV 80	D TDZE 80
---------	------------------

CATEGORY	A	B	C	D
S-9	620-1	540 (600-1)	620-1½	540 (600-1½)
CIRCLING	620-1	540 (600-1)	620-1½ 540 (600-1½)	800-2¼ 720 (800-2¼)
QWOTE FIX MINIMUMS				
S-9	540-1	460 (500-1)	540-1¾	460 (500-1¾)
CIRCLING	540-1 460 (500-1)	560-1 480 (500-1)	600-1½ 520 (600-1½)	800-2¼ 720 (800-2¼)

