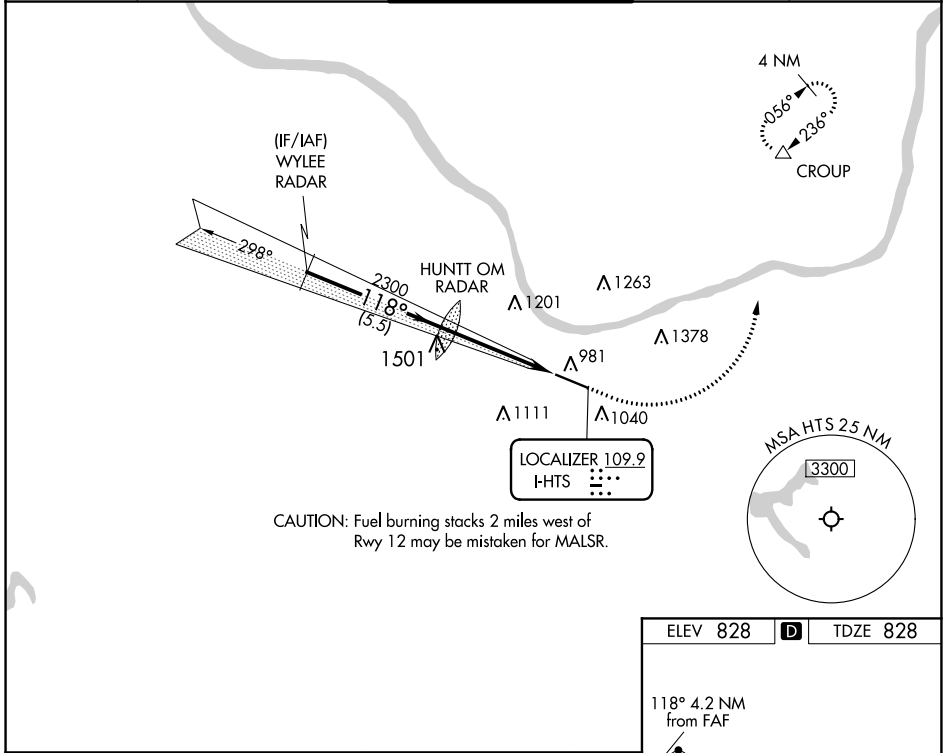


LOC I-HTS <b>109.9</b>	APP CRS <b>118°</b>	Rwy Idg TDZE Apt Elev	<b>6516</b> <b>828</b> <b>828</b>
---------------------------	------------------------	-----------------------------	---

**ILS or LOC RWY 12**  
TRI-STATE/MILTON J FERGUSON FLD (HTS)

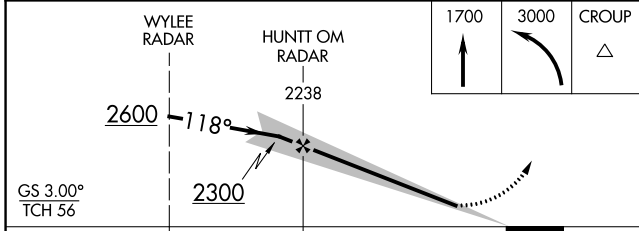
RNAV-1 GPS required. RADAR required.	MALSR	MISSED APPROACH: Climb to 1700 then climbing left turn to 3000 direct CROUP and hold.
<b>▲</b> ** RVR 1800 authorized with use of FD or AP or HUD to DA.	<b>AS</b>	

ATIS <b>125.2</b>	HUNTINGTON APP CON <b>119.75 270.1</b>	HUNTINGTON TOWER <b>118.5 270.1</b>	GND CON <b>121.9</b>	CLNC DEL <b>118.05</b>
----------------------	---	--	-------------------------	---------------------------

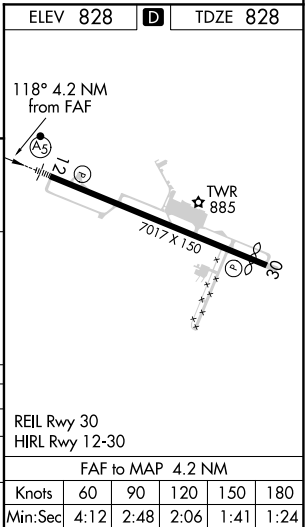


NE-4, 27 JAN 2022 to 24 FEB 2022

NE-4, 27 JAN 2022 to 24 FEB 2022



CATEGORY	A	B	C	D
S-ILS 12**	1028/24		200 (200-½)	
S-LOC 12	1380/24	552 (600-½)	1380/60	552 (600-1¼)
<b>C</b> CIRCLING	1380-1	552 (600-1)	1520-2 692 (700-2)	1820-3 992 (1000-2)



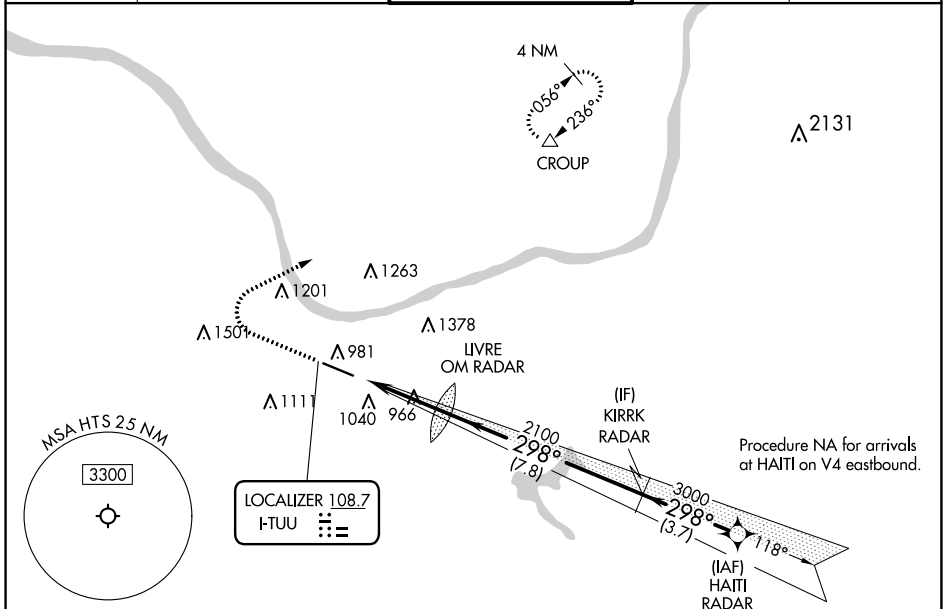
LOC I-TUU	APP CRS	Rwy Idg	<b>6516</b>
<b>108.7</b>	<b>298°</b>	TDZE	<b>828</b>
		Apt Elev	<b>828</b>

# ILS or LOC RWY 30

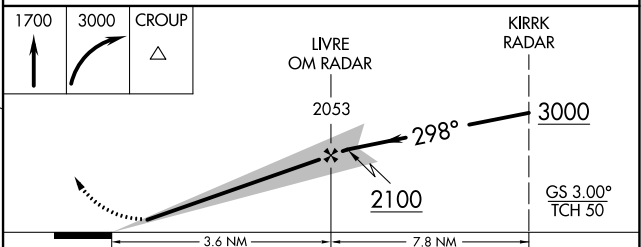
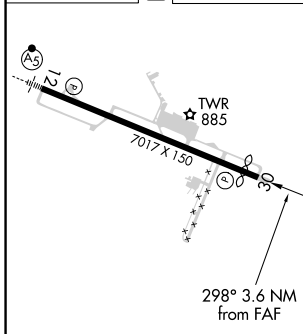
TRI-STATE/MILTON J FERGUSON FLD (HTS)

RNAV 1-GPS required. RADAR required.		MISSED APPROACH: Climb to 1700 then climbing right turn to 3000 direct CROUP and hold.		
  ASR				

ATIS	HUNTINGTON APP CON	HUNTINGTON TOWER	GND CON	CLNC DEL
<b>125.2</b>	<b>119.75 270.1</b>	<b>118.5 270.1</b>	<b>121.9</b>	<b>118.05</b>



ELEV 828	<b>D</b>	TDZE 828
----------	----------	----------



CATEGORY	A	B	C	D
S-ILS 30	1028- <sup>3</sup> / <sub>4</sub>		200 (200- <sup>3</sup> / <sub>4</sub> )	
S-LOC 30	1220-1	392 (400-1)	1220-1 <sup>1</sup> / <sub>8</sub>	392 (400-1 <sup>1</sup> / <sub>8</sub> )
<b>C</b> CIRCLING	1320-1 492 (500-1)	1380-1 552 (600-1)	1520-2 692 (700-2)	1820-3 992 (1000-3)

NE-4, 27 JAN 2022 to 24 FEB 2022

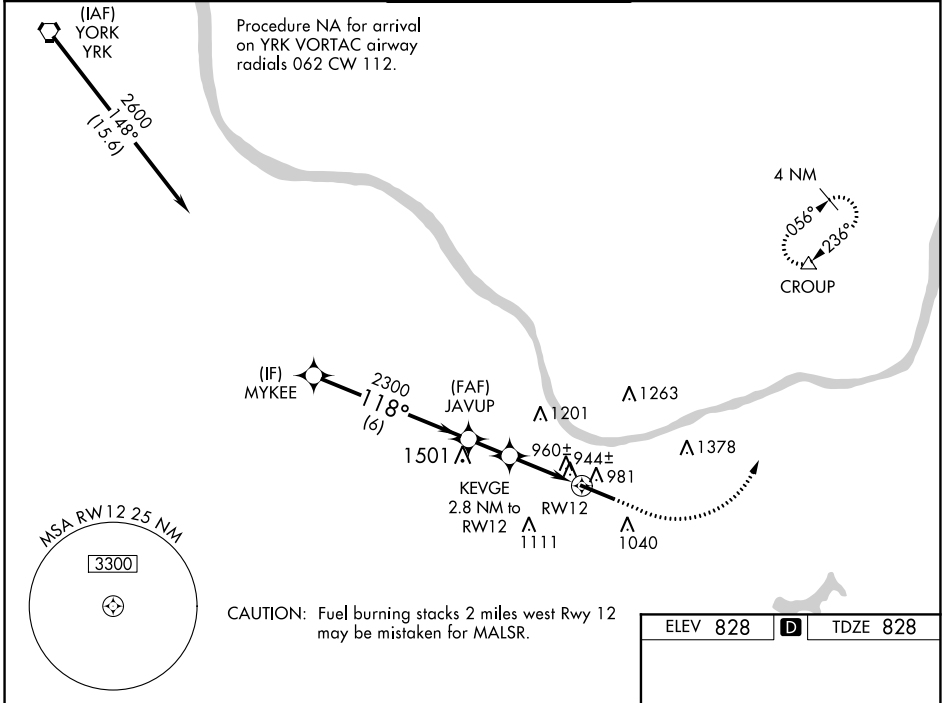
NE-4, 27 JAN 2022 to 24 FEB 2022

WAAS CH <b>45699</b> <b>W12A</b>	APP CRS <b>118°</b>	Rwy Idg TDZE Apt Elev	<b>6516</b> <b>828</b> <b>828</b>
--	------------------------	-----------------------------	---

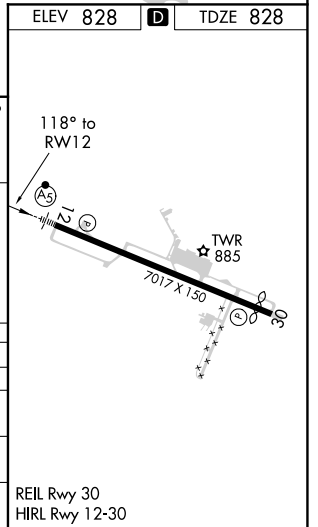
# RNAV (GPS) RWY 12

TRI-STATE/MILTON J FERGUSON FLD (HTS)

RNP APCH.		MALSR		MISSED APPROACH: Climb to 1700 then climbing left turn to 3000 direct CROUP and hold.	
<p>▼ For inoperative ALS, increase LNAV/VNAV all Cats visibility to RVR 4500, LNAV Cat A/B to RVR 5500, Cat C/D to RVR 6000. For uncompensated Baro-VNAV systems, LNAV/VNAV NA below -16°C or above 38°C. Rwy 12 helicopter visibility reduction below ¾ SM NA. Inoperative table does not apply to LPV.</p>					
ATIS <b>125.2</b>	HUNTINGTON APP CON <b>119.75 270.1</b>	HUNTINGTON TOWER <b>118.5 270.1</b>	GND CON <b>121.9</b>	CLNC DEL <b>118.05</b>	



MYKEE	JAVUP	KEVGE 2.8 NM to RWY12	*LNAV only.	
2600	2300	1760	1700	3000
GP 3.00° TCH 56			↑	↶
6 NM	1.7 NM	1.7 NM	△	CROUP
CATEGORY	A	B	C	D
LPV DA		1028/40	200 (200-¾)	
LNAV/VNAV DA		1126/40	298 (300-¾)	
LNAV MDA		1220/40	392 (400-¾)	
CIRCLING	1340-1 512 (600-1)	1380-1 552 (600-1)	1520-2 692 (700-2)	1820-3 992 (1000-3)



NE-4, 27 JAN 2022 to 24 FEB 2022

NE-4, 27 JAN 2022 to 24 FEB 2022

WAAS CH <b>66017</b> <b>W30A</b>	APP CRS <b>298°</b>	Rwy Idg TDZE Apt Elev	<b>6516</b> <b>828</b> <b>828</b>
--	------------------------	-----------------------------	---

# RNAV (GPS) RWY 30

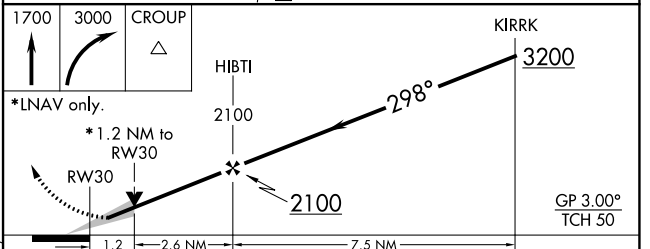
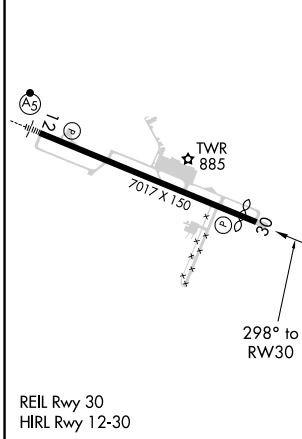
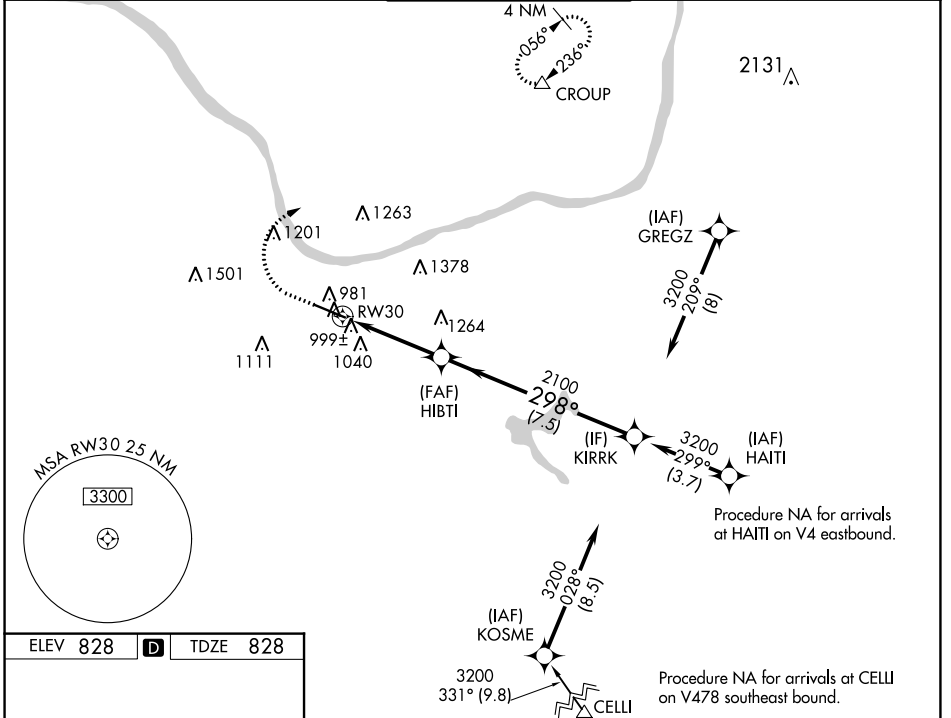
TRI-STATE/MILTON J FERGUSON FLD (HTS)

RNP APCH.

**⚠** For uncompensated Baro-VNAV systems, LNAV/VNAV NA below -18°C or above 54°C.  
**ASR**

MISSED APPROACH: Climb to 1700 then climbing right turn to 3000 direct CROUP and hold.

ATIS <b>125.2</b>	HUNTINGTON APP CON <b>119.75 270.1</b>	HUNTINGTON TOWER <b>118.5 270.1</b>	GND CON <b>121.9</b>	CLNC DEL <b>118.05</b>
----------------------	---	--	-------------------------	---------------------------



CATEGORY	A	B	C	D
LPV DA		1028- <sup>3</sup> / <sub>4</sub>	200 (200- <sup>3</sup> / <sub>4</sub> )	
LNAV/VNAV DA		1180-1	352 (400-1)	
LNAV MDA	1260-1	432 (500-1)	1260-1 <sup>1</sup> / <sub>4</sub>	432 (500-1 <sup>1</sup> / <sub>4</sub> )
<b>C</b> CIRCLING	1320-1 492 (500-1)	1380-1 552 (600-1)	1520-2 692 (700-2)	1820-3 992 (1000-3)

NE-4, 27 JAN 2022 to 24 FEB 2022

NE-4, 27 JAN 2022 to 24 FEB 2022