

LOC/DME I-HRJ 108.35 Chan 20(Y)	APP CRS 048°	Rwy Idg TDZE 195 Apt Elev 202	5000
--	------------------------	---	-------------

LOC RWY 5

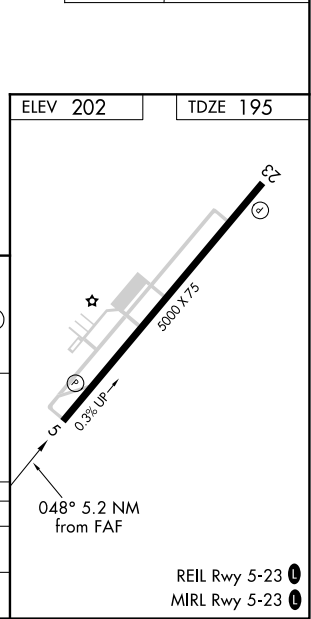
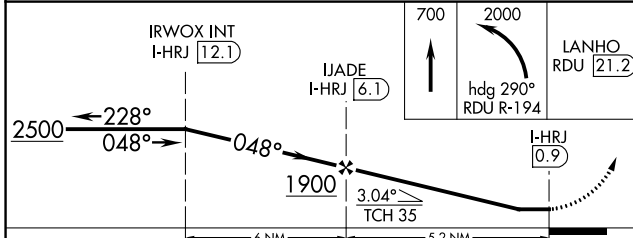
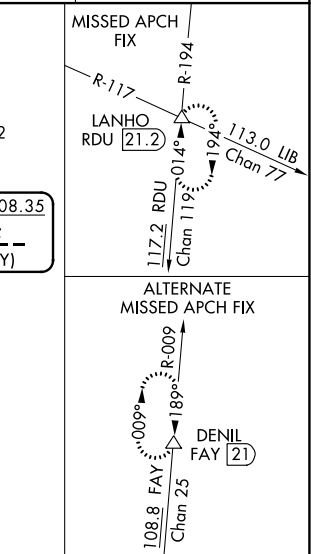
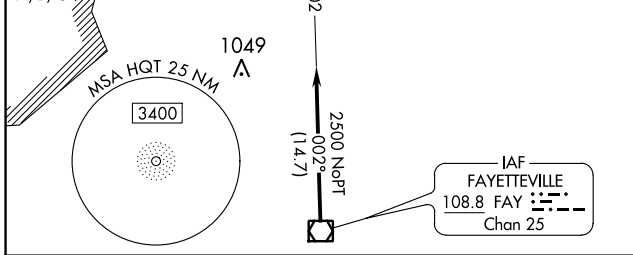
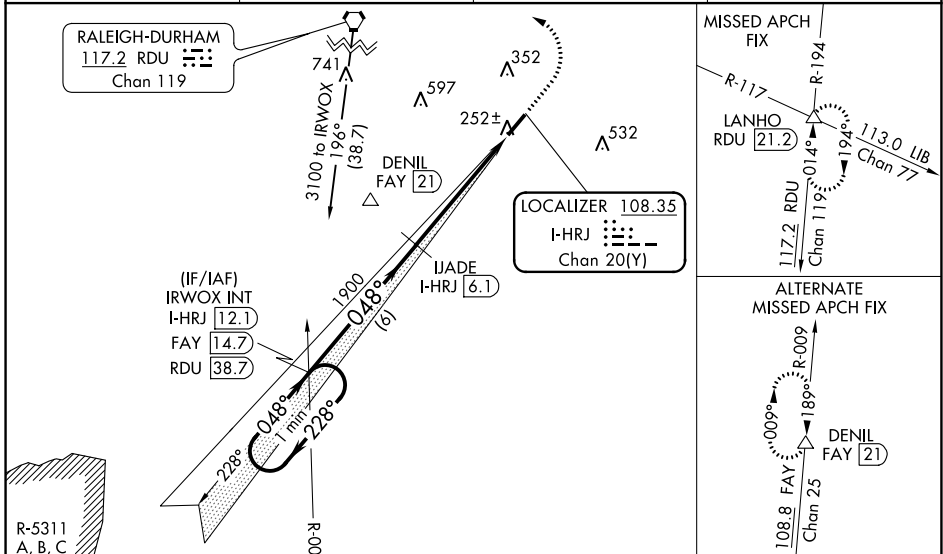
HARNETT RGNL JETPORT (HRJ)

DME required.

Rwy 5 helicopter visibility reduction below 1 SM NA. When local altimeter setting not received, use Smithfield altimeter setting and increase all MDA 60 feet.

MISSED APPROACH: Climb to 700 then climbing left turn to 2000 on heading 290° and RDU R-194 to LANHO INT/RDU 21.2 DME and hold.

AWOS-3 119.025	FAYETTEVILLE APP CON 125.175 285.575	GCO 135.075	UNICOM 122.7 (CTAF) 0
--------------------------	--	-----------------------	---------------------------------



CATEGORY	A	B	C	D
S-5		520-1 325 (400-1)		NA
CIRCLING	600-1 398 (400-1)	660-1 458 (500-1)	720-1½ 518 (600-1½)	NA

SE-2, 05 NOV 2020 to 03 DEC 2020

SE-2, 05 NOV 2020 to 03 DEC 2020

REIL Rwy 5-23 0
MIRL Rwy 5-23 0

NDB HQT	APP CRS	Rwy Idg	5000
417	230°	TDZE	202
		Apt Elev	202

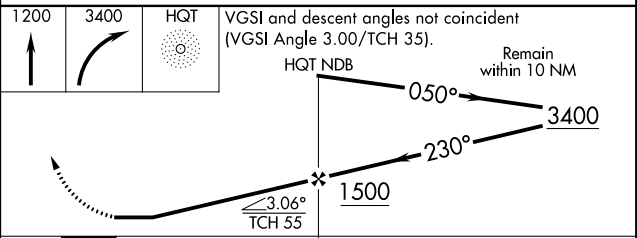
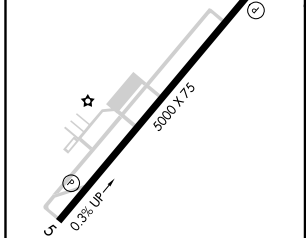
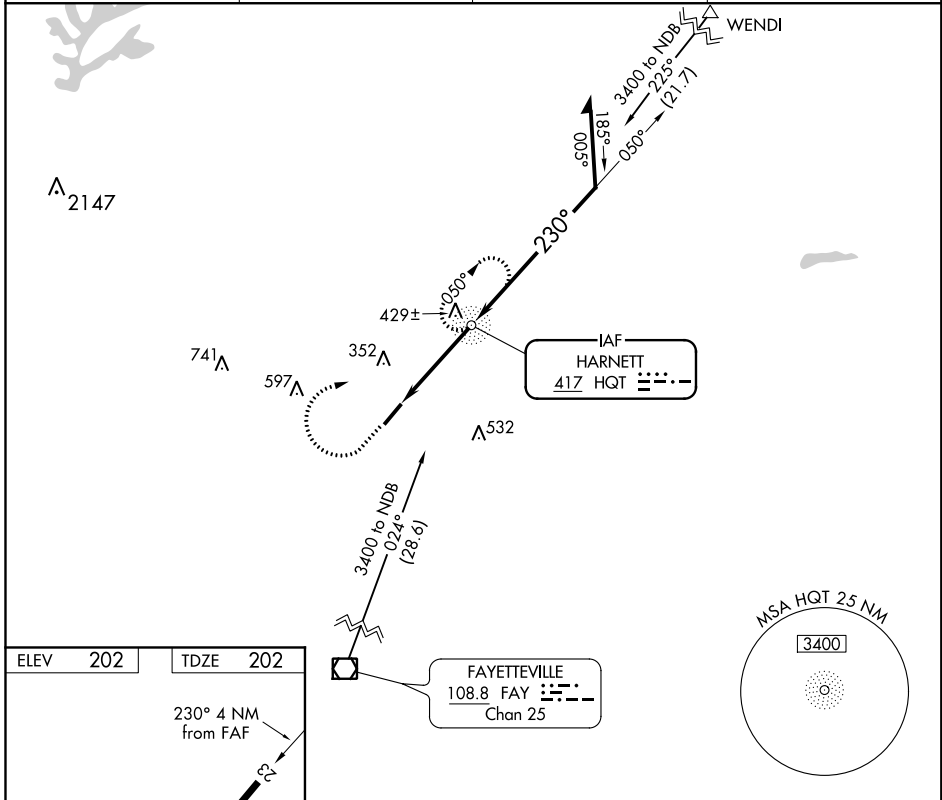
NDB RWY 23

HARNETT RGNL JETPORT (HRJ)

⚠ When local altimeter setting not received, use Smithfield altimeter setting and increase all MDA 60 feet, and S-23 and Circling Cat C visibility 1/8 mile. Helicopter visibility reduction below 3/4 SM NA.

MISSED APPROACH: Climb to 1200 then climbing right turn to 3400 direct HQT NDB and hold.

AWOS-3 119.025	FAYETTEVILLE APP CON 125.175 285.575	GCO 135.075	UNICOM 122.7 (CTAF)
--------------------------	--	-----------------------	-------------------------------



	REIL Rwy 5-23	ⓘ			
	MIRL Rwy 5-23	ⓘ			
FAF to MAP 3.8 NM					
Knots	60	90	120	150	180
Min:Sec	3:48	2:32	1:54	1:31	1:16
CATEGORY	A	B	C	D	
S-23	780-1	578 (600-1)	780-1½ 578 (600-1½)	NA	
CIRCLING	780-1	578 (600-1)	780-1½ 578 (600-1½)	NA	

SE-2, 05 NOV 2020 to 03 DEC 2020

SE-2, 05 NOV 2020 to 03 DEC 2020

WAAS CH 45904 W23A	APP CRS 228°	Rwy Idg TDZE Apt Elev	5000 202 202
--	------------------------	-----------------------------	---

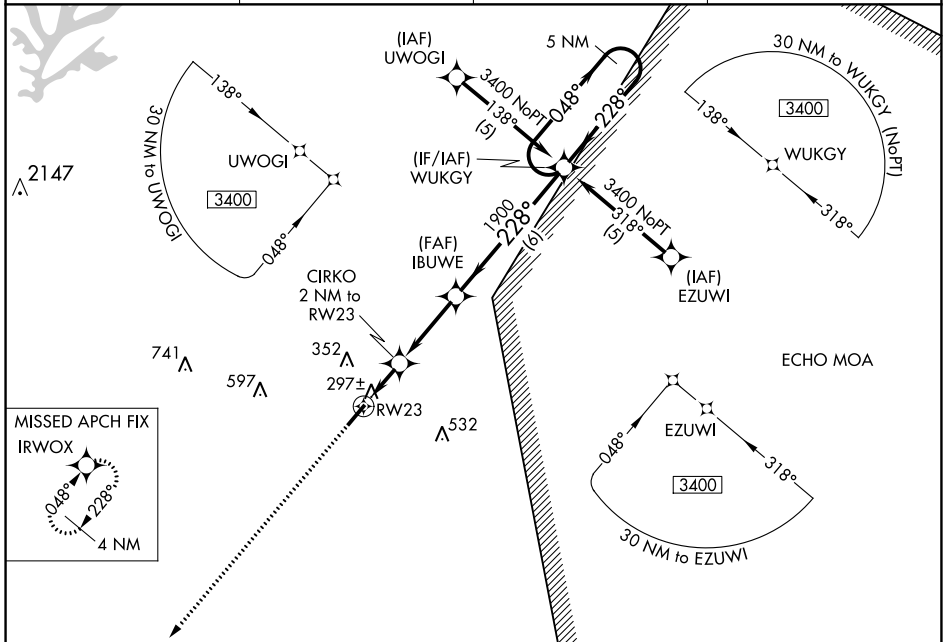
RNAV (GPS) RWY 23

HARNETT RGNL JETPORT (HRJ)

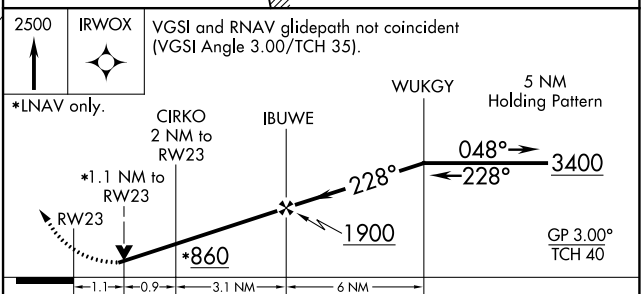
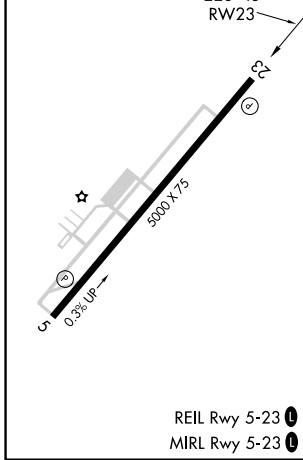
⚠ When local altimeter setting not received, use Smithfield altimeter setting and increase all DA/MDA 60 feet, increase LPV visibilities ¼ mile, and LNAV Cat. C visibility ¼ mile. DME/DME RNP-0.3 NA. Visibility reduction by helicopters NA. VDP NA when using Smithfield altimeter setting.

MISSED APPROACH:
Climb to 2500 direct IRWOX and hold.

AWOS-3 119.025	FAYETTEVILLE APP CON 125.175 285.575	GCO 135.075	UNICOM 122.7 (CTAF)
--------------------------	--	-----------------------	-------------------------------



ELEV 202	TDZE 202
----------	----------



CATEGORY	A	B	C	D
LPV DA	551-1¼ 349 (400-1¼)			NA
LNAV MDA	600-1 398 (400-1)			NA
CIRCLING	600-1 398 (400-1)	660-1 458 (500-1)	720-1½ 518 (600-1½)	NA

SE-2, 05 NOV 2020 to 03 DEC 2020

SE-2, 05 NOV 2020 to 03 DEC 2020

WAAS CH 66004 W05A	APP CRS 048°	Rwy Idg TDZE Apt Elev	5000 195 202
--	------------------------	-----------------------------	---

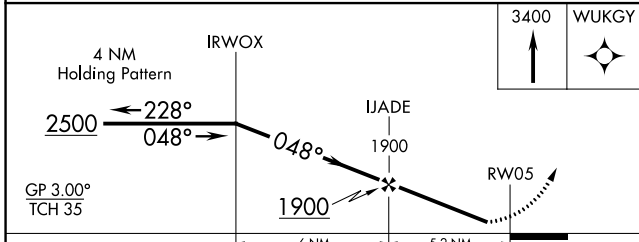
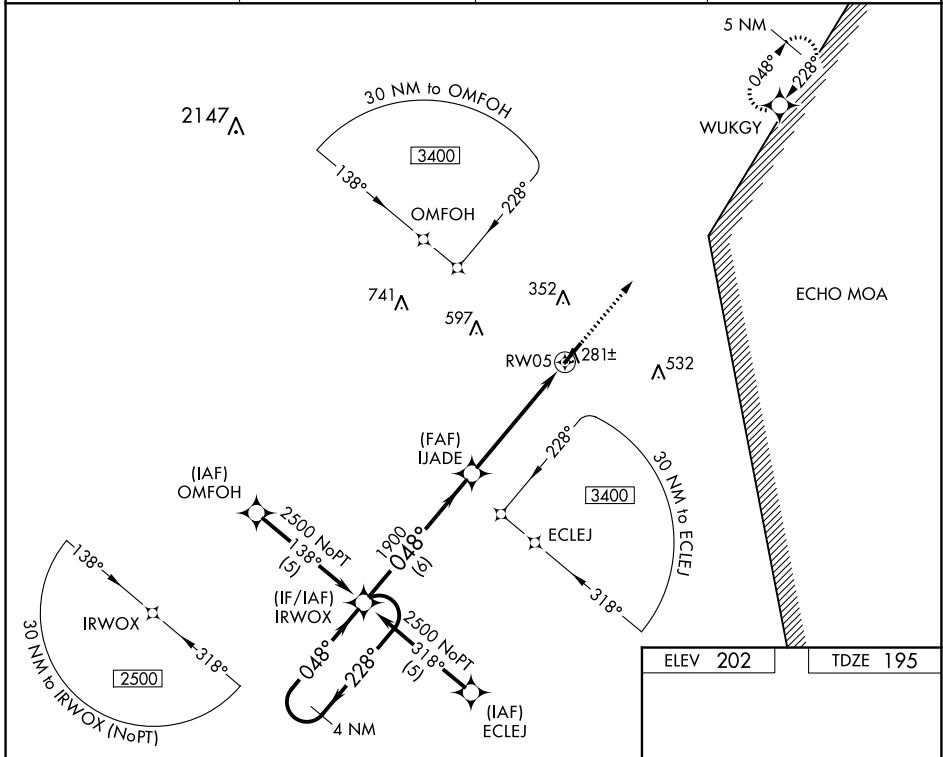
RNAV (GPS) RWY 5

HARNETT RGNL JETPORT (HRJ)

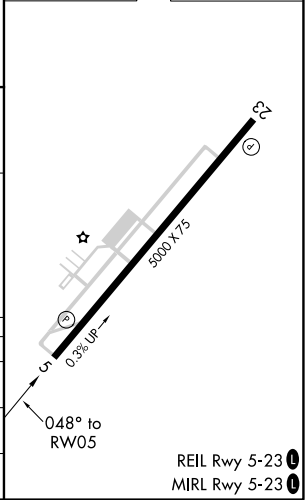
⚠ DME/DME RNP-0.3 NA. Visibility reduction by helicopters NA. When local altimeter setting not received, use Smithfield altimeter setting and increase all DA/MDA 60 feet; increase LPV all Cats and LNAV Cat C visibility ¼ mile.

⚠ MISSED APPROACH: Climb to 3400 direct WUKGY and hold.

AWOS-3 119.025	FAYETTEVILLE APP CON 125.175 285.575	GCO 135.075	UNICOM 122.7 (CTAF) 0
--------------------------	--	-----------------------	--



ELEV 202	TDZE 195
----------	----------



CATEGORY	A	B	C	D
LPV DA	474-1	279 (300-1)		NA
LNAV MDA	540-1	345 (400-1)		NA
CIRCLING	600-1 398 (400-1)	660-1 458 (500-1)	720-1½ 518 (600-1½)	NA

SE-2, 05 NOV 2020 to 03 DEC 2020

SE-2, 05 NOV 2020 to 03 DEC 2020