

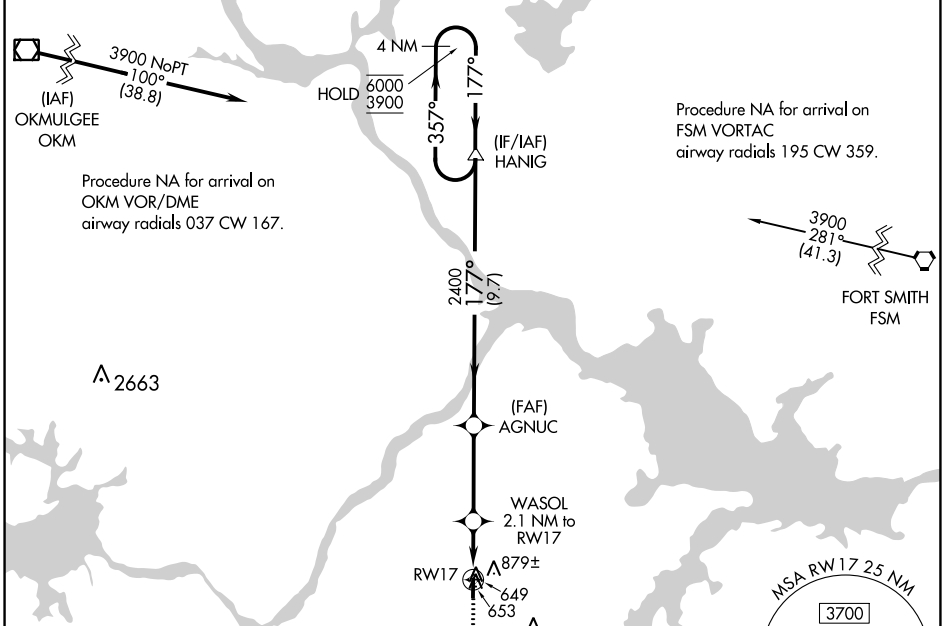
WAAS CH 65822 W17A	APP CRS 177°	Rwy Idg TDZE 599 Apt Elev 600	4200
--	------------------------	---	-------------

RNAV (GPS) RWY 17

STIGLER RGNL (GZL)

RNP APCH. ▼ Rwy 17 helicopter visibility reduction below 1 SM NA. Procedure NA at night.	MISSED APPROACH: Climb to 3900 direct ELKVI and hold, continue climb-in-hold to 3900.
--	--

AWOS-3 118.575	FORT WORTH CENTER 132.2 338.35	CTAF 122.9
--------------------------	--	----------------------



ELEV 600	D	TDZE 599
LURL Rwy 17-35		

CATEGORY	A	B	C	D
LP MDA	900-1	301 (300-1)		NA
LNAV MDA	1020-1	421 (500-1)		NA
C CIRCLING	1180-1	580 (600-1)		NA

SC-1, 19 MAY 2022 to 16 JUN 2022

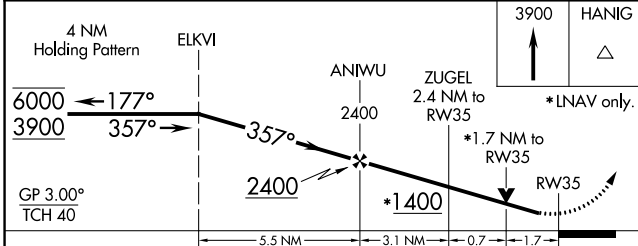
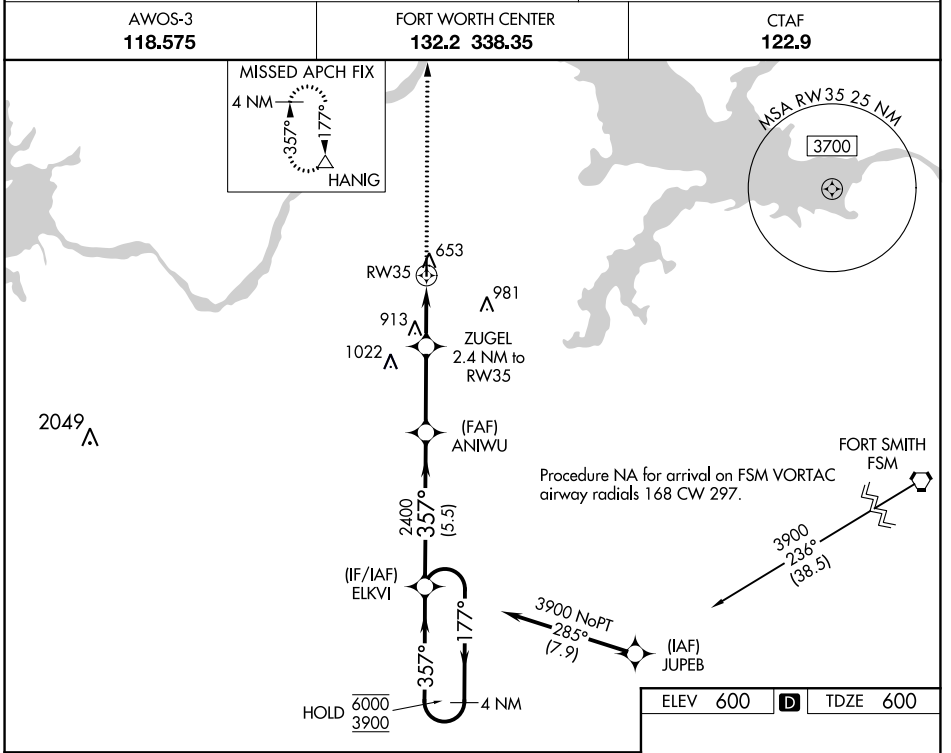
SC-1, 19 MAY 2022 to 16 JUN 2022

WAAS CH 82522 W35A	APP CRS 357°	Rwy Idg TDZE Apt Elev	4296 600 600
--	------------------------	-----------------------------	---

RNAV (GPS) RWY 35

STIGLER RGNL (GZL)

RNP APCH.	<p>▼ Circling Rwy 17 NA at night. Rwy 35 helicopter visibility reduction below 3/4 SM NA. For uncompensated Baro-VNAV systems, LNAV/VNAV NA below -16°C or above 54°C.</p>	<p>MISSED APPROACH: Climb to 3900 direct HANIG and hold.</p>
AWOS-3 118.575		



ELEV 600	D	TDZE 600
----------	----------	----------

CATEGORY	A	B	C	D
LPV DA	850-1	250 (300-1)		NA
LNAV/VNAV DA	867-1	267 (300-1)		NA
LNAV MDA	1180-1	580 (600-1)		NA
C CIRCLING	1180-1	580 (600-1)		NA

LIRL Rwy 17-35

SC-1, 19 MAY 2022 to 16 JUN 2022

SC-1, 19 MAY 2022 to 16 JUN 2022