

GOSHEN NINE ARRIVAL
(GSH.GSH9) 15JUN23

GOSHEN NINE ARRIVAL
(GSH.GSH9) 23334

CHICAGO APP CON
128.2 353.875
GY Y ATIS
134.575
MDW D-ATIS
132.75

CHICAGO
MIDWAY
INTL

AWSUM
TURBOJET VERTICAL NAVIGATION
PLANNING INFORMATION
Expect 10000.

GIPPER
115.4 GIJ ---
Chan 101

GOSHEN
113.7 GSH ---
Chan 84

GARY/
CHICAGO INTL
HOBBART
SKY RANCH
GRIFFITH-
MERRILLVILLE
LANSING
MUNI

HALIE
IROCK

25

6000
*2200
267° (15)
6000
*2100
270° (8)
6000
*2600
270° (17)

CHICAGO HEIGHTS
114.2 CGT ---
Chan 89

PEOTONE
113.2 EON ---
Chan 79

MEGGZ
TURBOJET VERTICAL NAVIGATION
PLANNING INFORMATION
Expect 11000.

FORT WAYNE
117.8 FWA ---
Chan 125

NOTE: RADAR required.
NOTE: DME required.

NOTE: Chart not to scale.

ARRIVAL ROUTE DESCRIPTION

FORT WAYNE TRANSITION (FWA.GSH9): From over FWA VORTAC on FWA R-335 to BAGEL then on GSH R-092 to GSH VORTAC. Thence....

BAGEL TRANSITION (BAGEL.GSH9): From over BAGEL on GSH R-092 to GSH VORTAC. Thence....

...from over GSH VORTAC on GSH R-270 to MEGGZ, then on GSH R-270 to AWSUM, then on GSH R-270 and CGT R-087 to IROCK, then on CGT R-087 to HALIE, then on CGT R-087 to CGT VORTAC. Expect RADAR vectors to final approach course.

CHICAGO, ILLINOIS

CHICAGO, ILLINOIS

MOTIF SIX ARRIVAL
(MOTIF.MOTIF6) 29MAR18

(MOTIF.MOTIF6) 23334
MOTIF SIX ARRIVAL

AL-81 (FAA)

CHICAGO, ILLINOIS

CHICAGO APP CON
128.2 353.875
GY Y ATIS
134.575
MDW D-ATIS
132.75

DAVENPORT
113.8 CVA
Chan 85

DIPSY
VERTICAL NAVIGATION
PLANNING INFORMATION
Turbojet expect 15000.
Turboprop expect 13000.

JOLIET
112.3 JOT
Chan 70

CHICAGO
MIDWAY INTL

GARY/CHICAGO INTL

BRADFORD
114.7 BDF
Chan 94

MINOK
VERTICAL NAVIGATION
PLANNING INFORMATION
Expect 6000.

PEOTONE
113.2 EON
Chan 79

RENZO
VERTICAL NAVIGATION
PLANNING INFORMATION
Turbojet expect 15000.
Turboprop expect 13000.

MOTIF
VERTICAL NAVIGATION
PLANNING INFORMATION
Expect 10000.

LAMONI
116.7 LMN
Chan 114

KORTT
VERTICAL NAVIGATION
PLANNING INFORMATION
Turbojet expect 17000.
Turboprop expect 13000.

PONTIAC
109.6 PNT
Chan 33

13000
072°
(192)

FL180
069°
(132)

PEORIA
115.2 PIA
Chan 99

YEARY
VERTICAL NAVIGATION
PLANNING INFORMATION
Turbojet expect 17000.
Turboprop expect 13000.

KIRKSVILLE
114.6 IRK
Chan 93

MAGOO

SPINNER
112.7 SPI
Chan 74

NOTE: DME required
NOTE: RADAR required
NOTE: Chart not to scale.

(NARRATIVE ON FOLLOWING PAGE)



CHICAGO, ILLINOIS

ARRIVAL ROUTE DESCRIPTION

BRADFORD TRANSITION (BDF.MOTIF6): From over BDF VORTAC via BDF R-085 to MOTIF INT. Thence....

DAVENPORT TRANSITION (CVA.MOTIF6): From over CVA VORTAC via CVA R-125 and BDF R-309 to BDF VORTAC, then via BDF R-085 to MOTIF INT. Thence....

KIRKSVILLE TRANSITION (IRK.MOTIF6): From over IRK VORTAC via IRK R-069 and PIA R-253 to PIA VORTAC, then via PIA R-056 to MOTIF INT. Thence....

LAMONI TRANSITION (LMN.MOTIF6): From over LMN VOR/DME via LMN R-072 and BDF R-262 to BDF VORTAC, then via BDF R-085 to MOTIF INT. Thence....

MAGOO TRANSITION (MAGOO.MOTIF6): From over MAGOO INT via PIA R-225 to PIA VORTAC, then via PIA R-056 to MOTIF INT. Thence....

PEORIA TRANSITION (PIA.MOTIF6): From over PIA VORTAC via PIA R-056 to MOTIF INT. Thence....

PONTIAC TRANSITION (PNT.MOTIF6): From over PNT VOR/DME via PNT R-020 to MOTIF INT. Thence....

SPINNER TRANSITION (SPI.MOTIF6): From over SPI VORTAC via SPI R-037 and PNT R-214 to PNT VOR/DME, then via PNT R-020 to MOTIF INT. Thence....

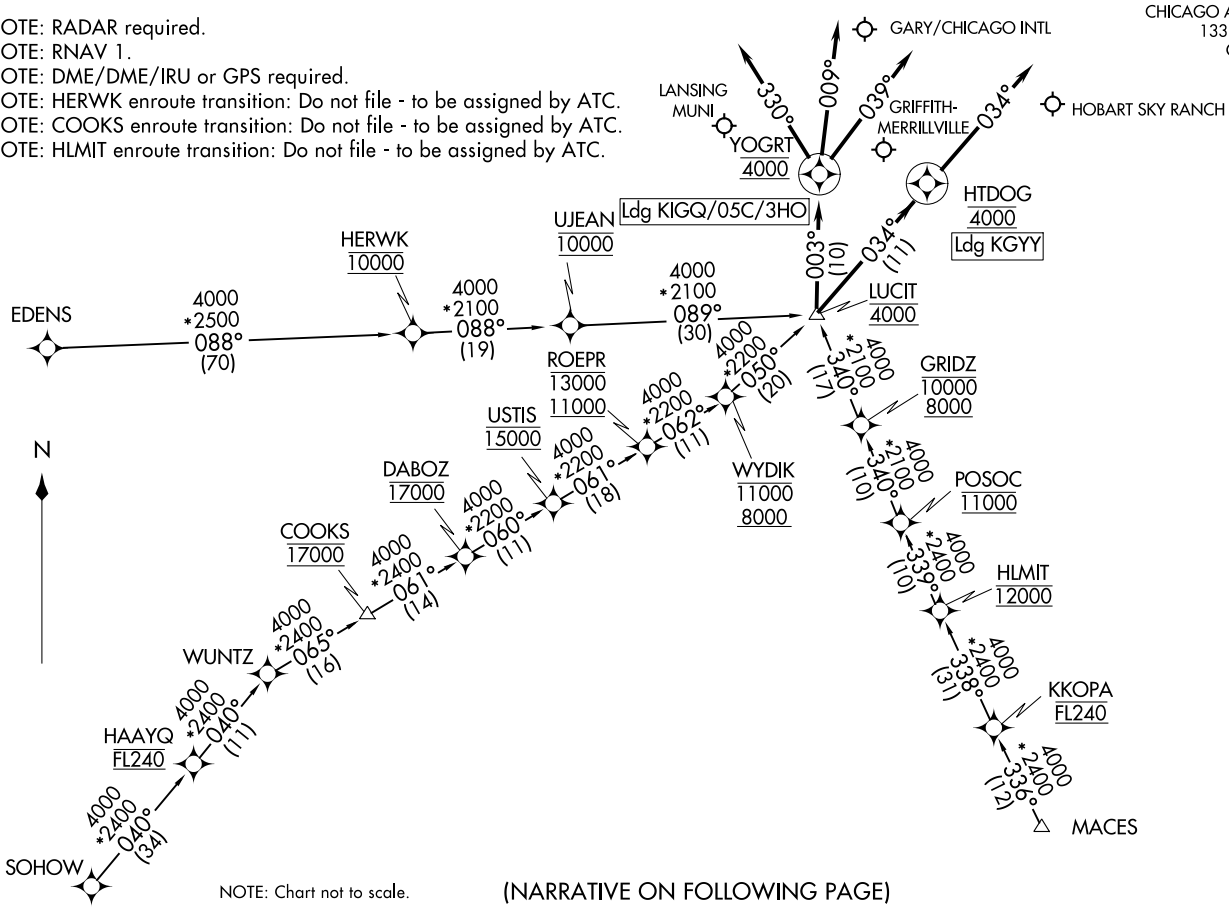
....from over MOTIF INT via JOT R-202 to JOT VOR/DME. Expect vector to final approach course.

EC-3, 22 FEB 2024 to 21 MAR 2024

EC-3, 22 FEB 2024 to 21 MAR 2024

CHICAGO APP CON
133.1 285.6
GY ATIS
134.575

NOTE: RADAR required.
NOTE: RNAV 1.
NOTE: DME/DME/IRU or GPS required.
NOTE: HERWK enroute transition: Do not file - to be assigned by ATC.
NOTE: COOKS enroute transition: Do not file - to be assigned by ATC.
NOTE: HLMIT enroute transition: Do not file - to be assigned by ATC.



NOTE: Chart not to scale.

(NARRATIVE ON FOLLOWING PAGE)

LUCIT TWO ARRIVAL (RNAV)
(LUCIT.LUCIT2) 17JUN21

(LUCIT.LUCIT2) 21336
LUCIT TWO ARRIVAL (RNAV)

AL-748 (FAA)

GARY, INDIANA

GARY, INDIANA

ARRIVAL ROUTE DESCRIPTION

COOKS TRANSITION (COOKS.LUCIT2):

EDENS TRANSITION (EDENS.LUCIT2):

HERWK TRANSITION (HERWK.LUCIT2):

HLMIT TRANSITION (HLMIT.LUCIT2):

MACES TRANSITION (MACES.LUCIT2):

SOHOW TRANSITION (SOHOW.LUCIT2):

LANDING 05C: From LUCIT on track 003° to cross YOGRT at 4000, then on track 009°. Expect RADAR vectors to final approach course.

LANDING 3HO: From LUCIT on track 003° to cross YOGRT at 4000, then on track 039°. Expect RADAR vectors to final approach course.

LANDING GYY: From LUCIT on track 034° to cross HTDOG at 4000, then on track 034°. Expect RADAR vectors to final approach course.

LANDING IGQ: From LUCIT on track 003° to cross YOGRT at 4000, then on track 330°. Expect RADAR vectors to final approach course.

EC-2, 22 FEB 2024 to 21 MAR 2024

EC-2, 22 FEB 2024 to 21 MAR 2024