



APP CRS	Rwy Idg	<b>4001</b>
<b>358°</b>	TDZE	<b>588</b>
	Apt Elev	<b>588</b>

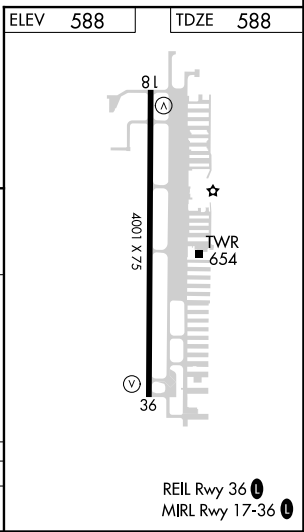
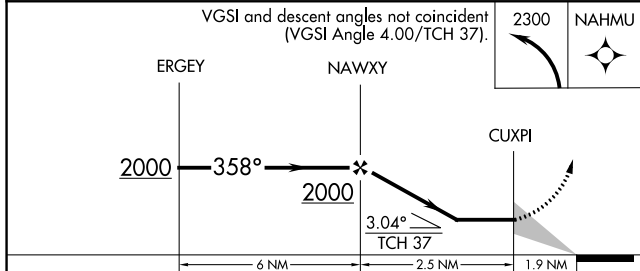
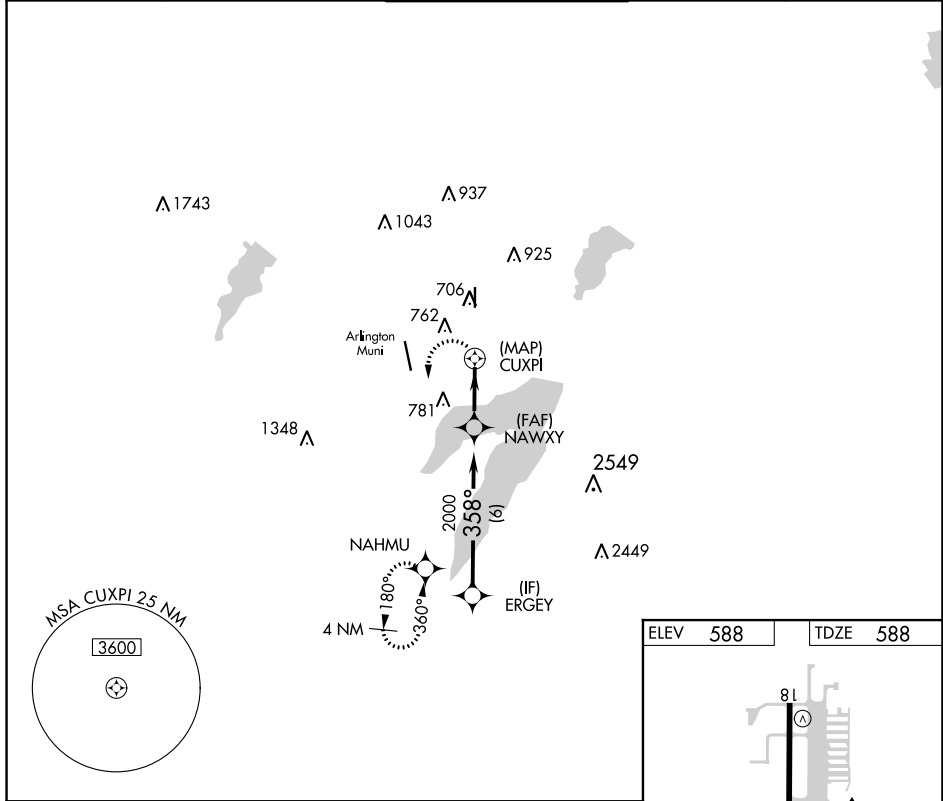
AL-9209 (FAA)

# RNAV (GPS) RWY 36

GRAND PRAIRIE MUNI (GPM)

RADAR required. RNP APCH - GPS.		MISSED APPROACH: Climbing left turn to 2300 direct NAHMU and hold.	
 			

AWOS-3P <b>118.475</b>	REGIONAL APP CON <b>135.975 379.9</b>	GRAND PRAIRIE TOWER ★ <b>128.55 (CTAF) 0</b>	GND CON <b>121.15</b>	UNICOM <b>123.075</b>
---------------------------	--	---	--------------------------	--------------------------



CATEGORY	A	B	C	D
LNAV MDA	1020-2½	432 (500-2½)	NA	

SC-2, 09 SEP 2021 to 07 OCT 2021

SC-2, 09 SEP 2021 to 07 OCT 2021

VOR/DME TTT <b>113.1</b> Chan <b>78</b>	APP CRS <b>356°</b>	Rwy Idg TDZE <b>588</b> Apt Elev <b>588</b>	<b>4001</b>
---	------------------------	---	-------------

# VOR RWY 36

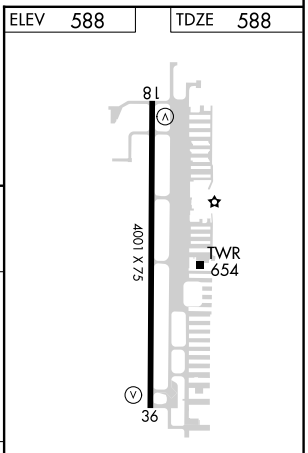
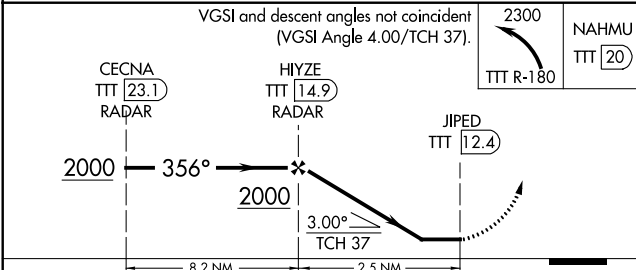
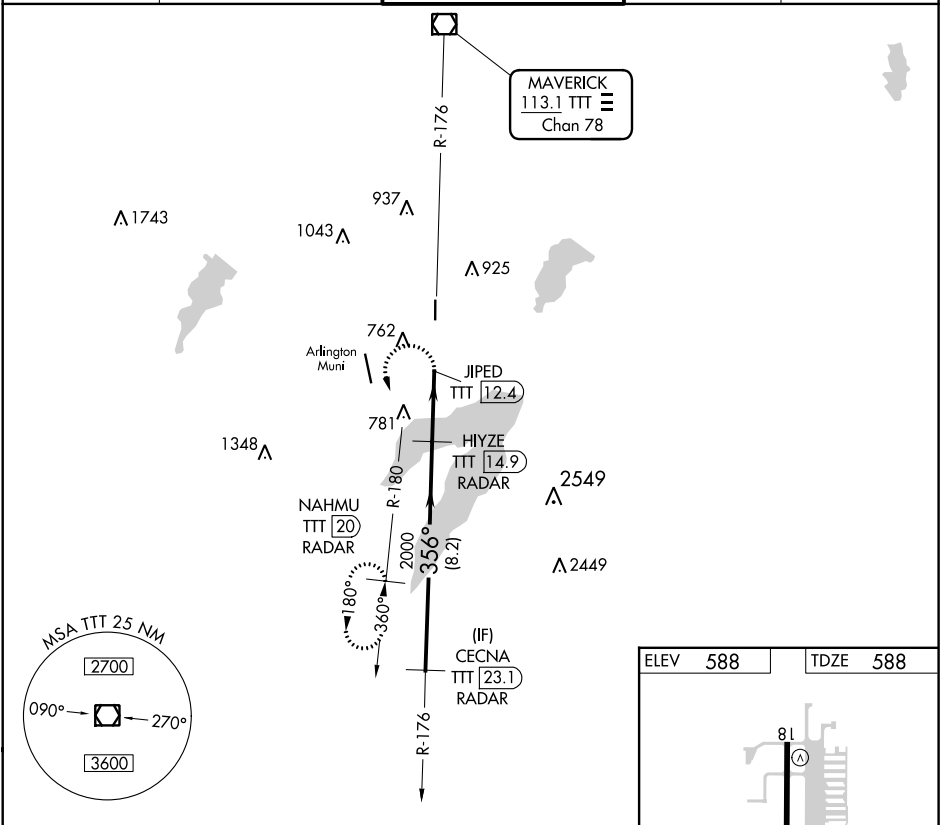
GRAND PRAIRIE MUNI (GPM)

RADAR and DME required.

**MAVERICK**  
113.1 TTT  
Chan 78

MISSED APPROACH: Climbing left turn to 2300 on TTT R-180 to NAHMU/20 DME/RADAR and hold.

AWOS-3P <b>118.475</b>	REGIONAL APP CON <b>135.975 379.9</b>	GRAND PRAIRIE TOWER* <b>128.55 (CTAF)</b>	GND CON <b>121.15</b>	UNICOM <b>123.075</b>
---------------------------	--	--	--------------------------	--------------------------



CATEGORY	A	B	C	D
S-35	1040-2½	452 (500-2½)	NA	

REIL Rwy 36  
MIRL Rwy 18-36

SC-2, 09 SEP 2021 to 07 OCT 2021

SC-2, 09 SEP 2021 to 07 OCT 2021