

GUTHRIE, OKLAHOMA

AL-5950 (FAA)

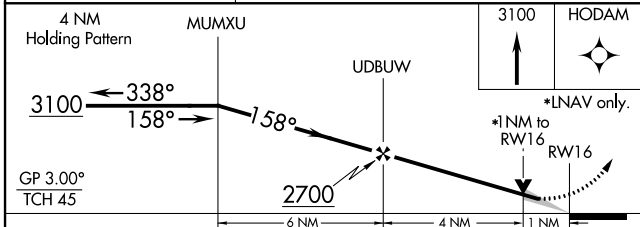
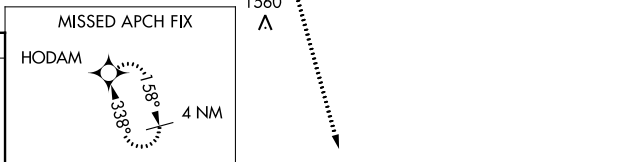
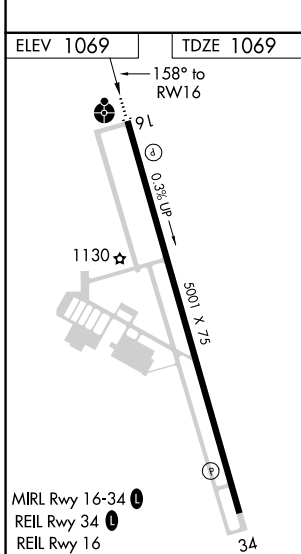
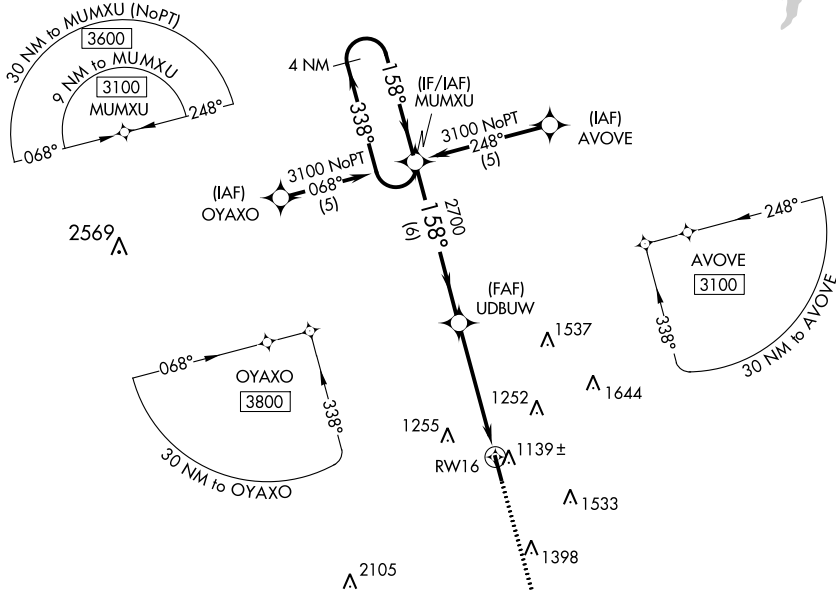
22251

WAAS CH <b>56308</b> W16A	APP CRS <b>158°</b>	Rwy Idg TDZE Apt Elev	<b>5001</b> <b>1069</b> <b>1069</b>
---------------------------------	------------------------	-----------------------------	---

# RNAV (GPS) RWY 16

GUTHRIE/EDMOND RGNL (GOK)

<p><b>⚠</b> DME/DME RNP-0.3 NA. VDP NA when using Will Rogers World altimeter setting. When local altimeter setting not received, use Will Rogers World altimeter setting and increase DA/MDA 100 feet and LPV all Cats visibility 1/4 mile.</p>	<p>ODALS</p>	<p>MISSED APPROACH: Climb to 3100 direct HODAM and hold.</p>
<p>ASOS <b>133.975</b></p>	<p>OKE CITY APP CON <b>124.2 336.4</b></p>	<p>UNICOM <b>122.8 (CTAF)</b></p>



CATEGORY	A	B	C	D
LPV DA	1319-1	250 (300-1)		NA
LNAV MDA	1420-1	351 (400-1)		NA
CIRCLING	1540-1 471 (500-1)	1560-1 491 (500-1)		NA

GUTHRIE, OKLAHOMA  
Amdt 1A 16JUN22

35°51'N-97°25'W

# GUTHRIE/EDMOND RGNL (GOK)

## RNAV (GPS) RWY 16

SC-1, 22 FEB 2024 to 21 MAR 2024

SC-1, 22 FEB 2024 to 21 MAR 2024

WAAS CH <b>56607</b> <b>W34A</b>	APP CRS <b>338°</b>	Rwy Idg TDZE Apt Elev	<b>5001</b> <b>1069</b> <b>1069</b>
--	------------------------	-----------------------------	---

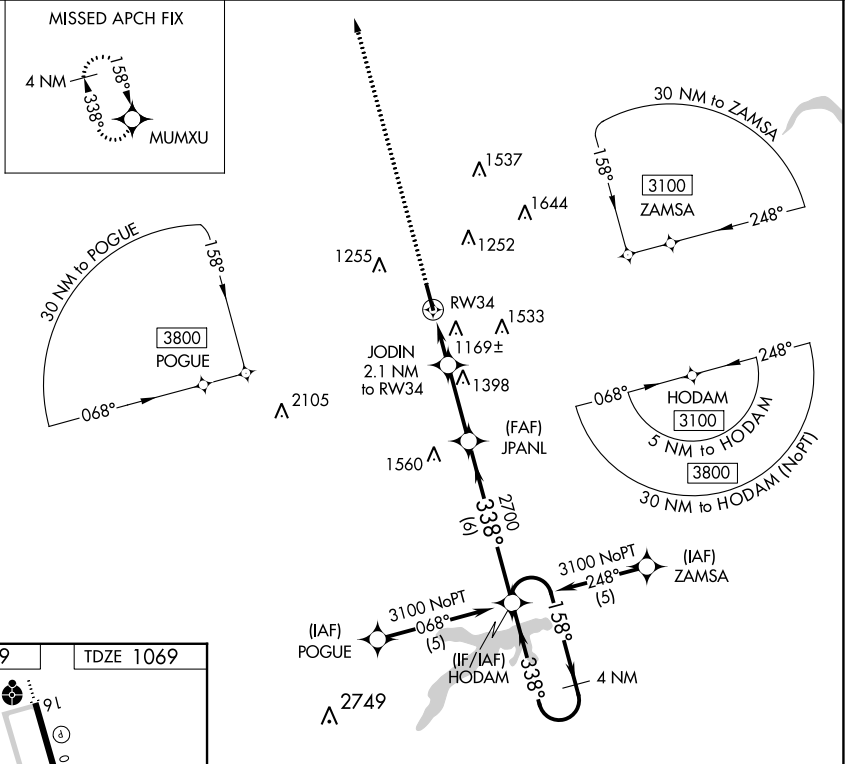
# RNAV (GPS) RWY 34

GUTHRIE/EDMOND RGNL (GOK)

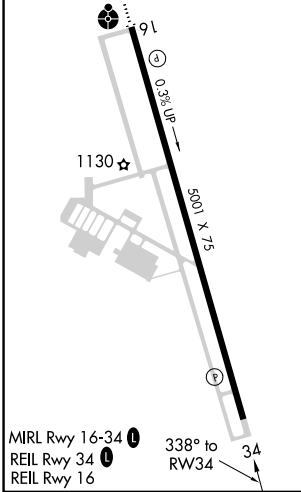
**▽** DME/DME RNP-0.3 NA. VDP NA when using Will Rogers World altimeter setting. When local altimeter setting not received, use Will Rogers World altimeter setting and increase DA/MDA 100 feet and LPV all Cats visibility ¼ mile.

**▲** MISSED APPROACH: Climb to 3100 direct MUMXU and hold.

ASOS <b>133.975</b>	OKE CITY APP CON <b>124.2 336.4</b>	UNICOM <b>122.8</b> (CTAF) <b>1</b>
------------------------	--	--



ELEV 1069	TDZE 1069
-----------	-----------



3100	MUMXU	JODIN 2.1 NM to RW34	JAPANL	HODAM	4 NM Holding Pattern
*LNAV only.		*1 NM to RW34			
		RW34	1760*	2700	3100
		1 NM	1.1 NM	2.8 NM	6 NM
CATEGORY	A	B	C	D	
LPV DA	1319-1	250 (300-1)			NA
LNAV MDA	1420-1	351 (400-1)			NA
CIRCLING	1540-1 471 (500-1)	1560-1 491 (500-1)			NA

GP 3.00°  
TCH 45

SC-1, 22 FEB 2024 to 21 MAR 2024

SC-1, 22 FEB 2024 to 21 MAR 2024