

APP CRS **137°**  
 Rwy Idg **7172**  
 TDZE **6537**  
 Apt Elev **6537**

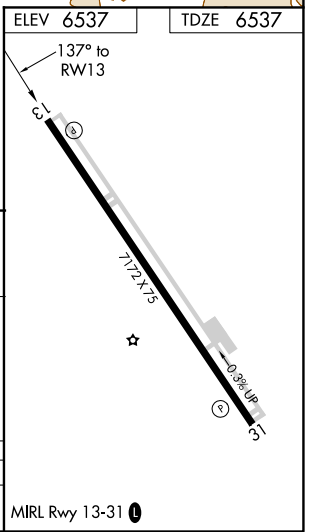
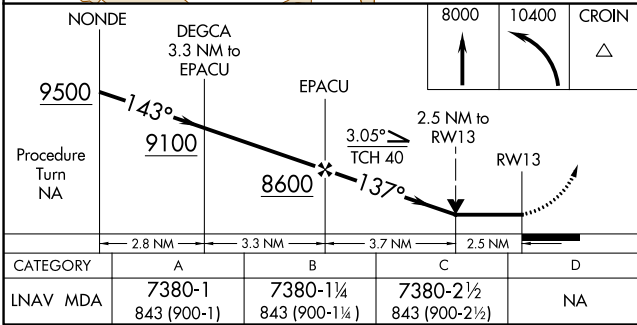
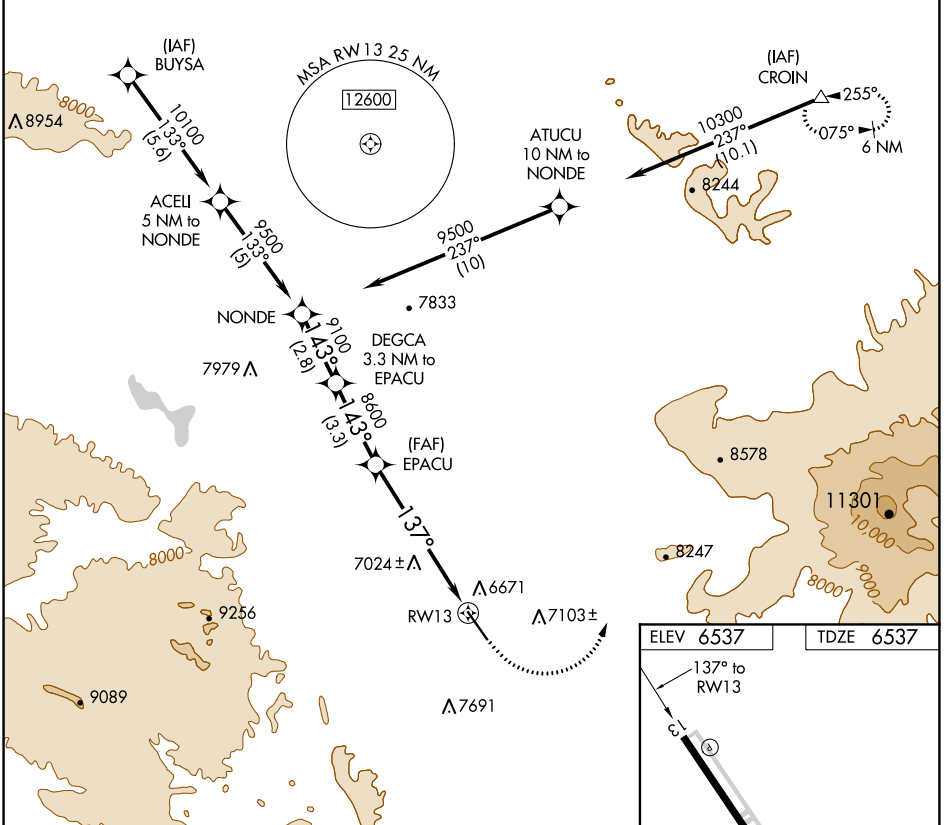
# RNAV (GPS) RWY 13

GRANTS-MILAN MUNI (GNT)

RNP APCH.  
 If local altimeter setting not received, procedure NA.  
 Rwy 13 helicopter visibility reduction below 3/4 SM NA.

MISSED APPROACH: Climb to 8000, then climbing left turn to 10400 direct CROIN WP and hold.

AWOS-3PT **118.3**      ALBUQUERQUE CENTER **124.325 288.25**      UNICOM **122.8 (CTAF)**



SW-1, 07 OCT 2021 to 04 NOV 2021

SW-1, 07 OCT 2021 to 04 NOV 2021

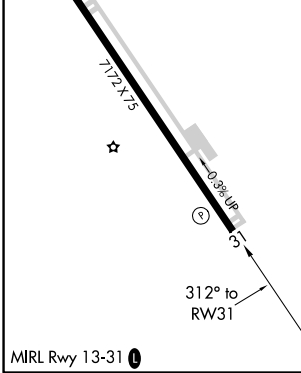
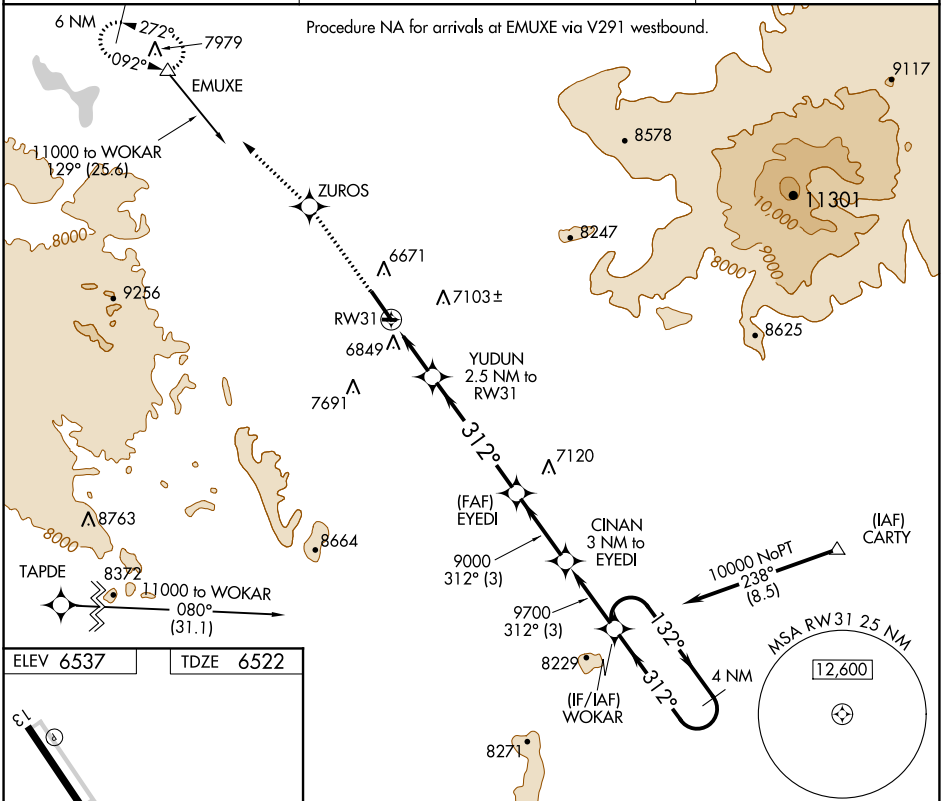
APP CRS <b>312°</b>	Rwy Idg <b>7172</b>
	TDZE <b>6522</b>
	Apt Elev <b>6537</b>

# RNAV (GPS) RWY 31

GRANTS-MILAN MUNI (GNT)

**GPS** or RNP-0.3 required. DME/DME RNP-0.3 NA.  
**NA** Circling not authorized east of Rwys 13-31.  
**MISSED APPROACH:** Climb to 11000 direct ZUROS WP and left turn via 302° track to EMUXE WP and hold.

AWOS-3PT <b>118.3</b>	ALBUQUERQUE CENTER <b>124.325 288.25</b>	UNICOM <b>122.8 (CTAF)</b>
--------------------------	---	-------------------------------



11000	ZUROS	EMUXE	CINAN 3 NM to EYEDI		WOKAR 4 NM Holding Pattern
	1.7 NM to RW31	YUDUN 2.5 NM to RW31	EYEDI 3.00° TCH 40	9700	10000
	7360	9000	312°	132°	312°
	1.7	0.8	5.1 NM	3 NM	3 NM
CATEGORY	A	B	C	D	
RNAV MDA	7100-1	578 (600-1)	7100-1½ 578 (600-1½)	NA	
CIRCLING	7200-1 663 (700-1)	7480-1¼ 943 (1000-1¼)	8000-3 1463 (1500-3)	NA	

SW-1, 07 OCT 2021 to 04 NOV 2021

SW-1, 07 OCT 2021 to 04 NOV 2021