

WAAS CH 99510 W10A	APP CRS 102°	Rwy Idg TDZE Apt Elev	5506 1014 1014
--	------------------------	-----------------------------	---

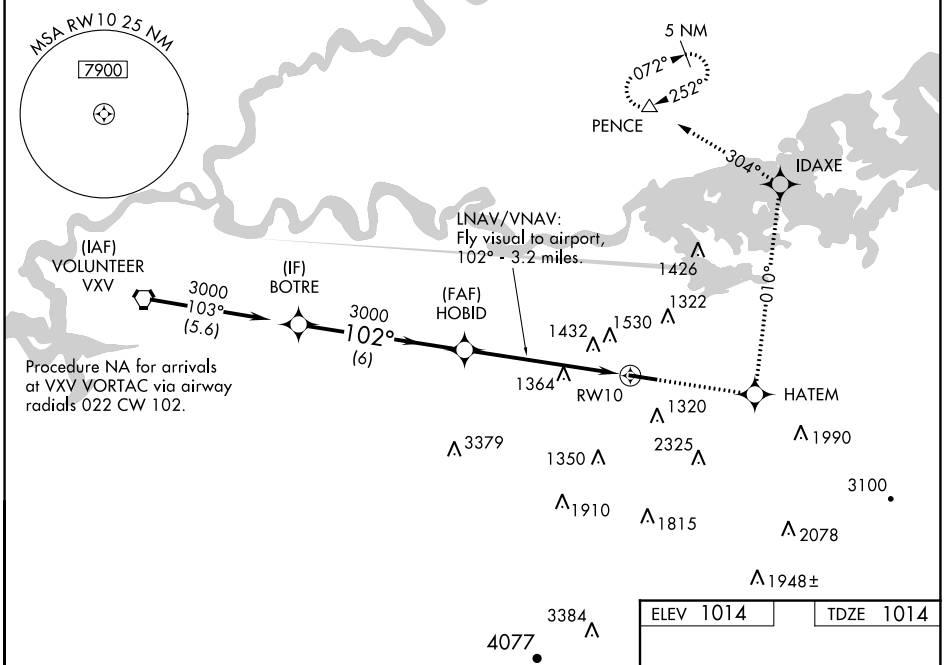
RNAV (GPS) RWY 10

GATLINBURG-PIGEON FORGE (GKT)

NA LNAV/VNAV NA when using Mc Ghee Tyson altimeter setting. For uncompensated Baro-VNAV systems, LNAV/VNAV NA below -17°C (2°F) or above 47°C (116°F).
NA DME/DME RNP-0.3 NA. Helicopter visibility reduction below ¾ SM NA. When local altimeter setting not received, use Mc Ghee Tyson altimeter setting and increase all DA/MDA 60 feet and increase LPV all Cats and LNAV and Circling Cats C/D visibility ¼ mile. Circling to Rwy 28 NA at night.

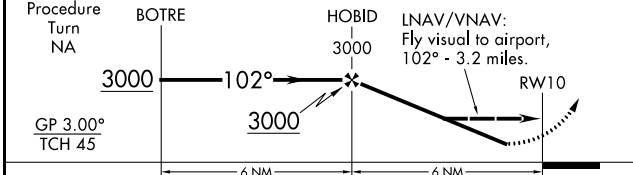
MISSED APPROACH: Climb to 4000 direct HATEM and via 010° track to IDAXE and via 304° track to PENCE and hold.

AWOS-3 126.875	KNOXVILLE APP CON 132.8 360.8	UNICOM 123.0 (CTAF) 0
--------------------------	---	---------------------------------



VGSI and RNAV glidepath not coincident (VGSI Angle 3.50/TCH 33).

4000	HATEM	tr 010°	IDAXE	tr 304°	PENCE
------	-------	---------	-------	---------	-------



ELEV 1014	TDZE 1014
-----------	-----------

CATEGORY	A	B	C	D
LPV DA		1371-1¼	357 (400-1¼)	
LNAV/VNAV DA	2013-2	999 (1000-2)	2013-3	999 (1000-3)
LNAV MDA	1800-1 786 (800-1)	1800-1¼ 786 (800-1¼)	1800-2¼ 786 (800-2¼)	1800-2½ 786 (800-2½)
CIRCLING	1800-1 786 (800-1)	1880-1¼ 866 (900-1¼)	1880-2½ 866 (900-2½)	1880-2¾ 866 (900-2¾)

REIL Rwys 10 and 28
 MRL Rwy 10-28 0

SE-1, 27 JAN 2022 to 24 FEB 2022

SE-1, 27 JAN 2022 to 24 FEB 2022

VORTAC VXV 116.4 Chan 111	APP CRS 102°	Rwy Idg TDZE Apt Elev 5506 1014 1014
---	------------------------	--

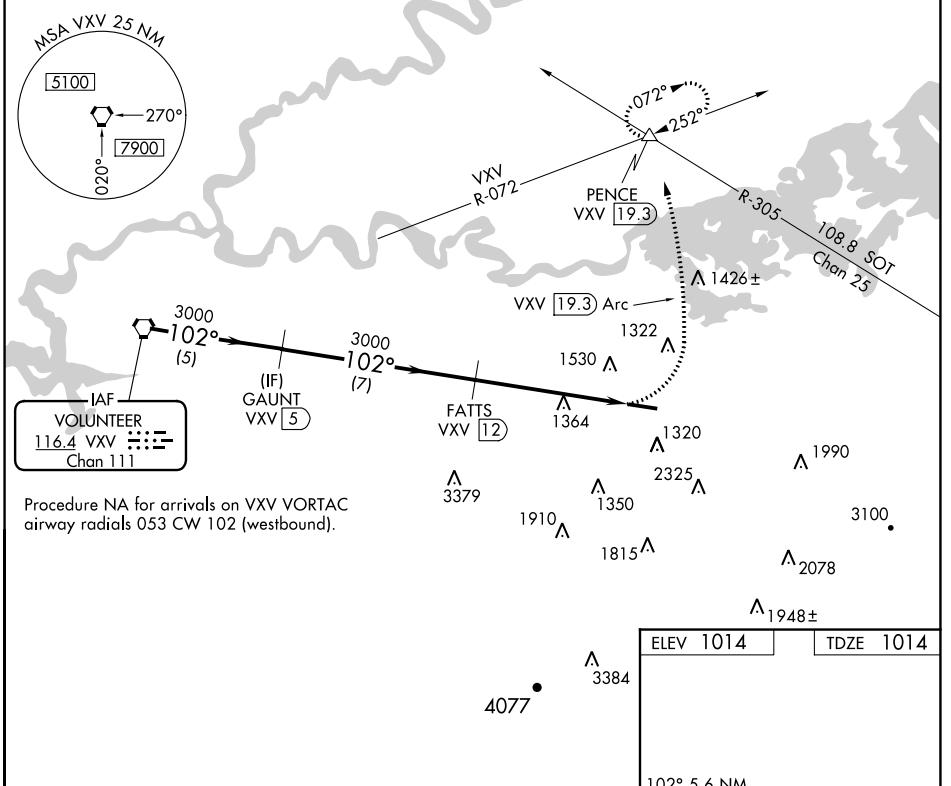
VOR/DME RWY 10

GATLINBURG-PIGEON FORGE (GKT)

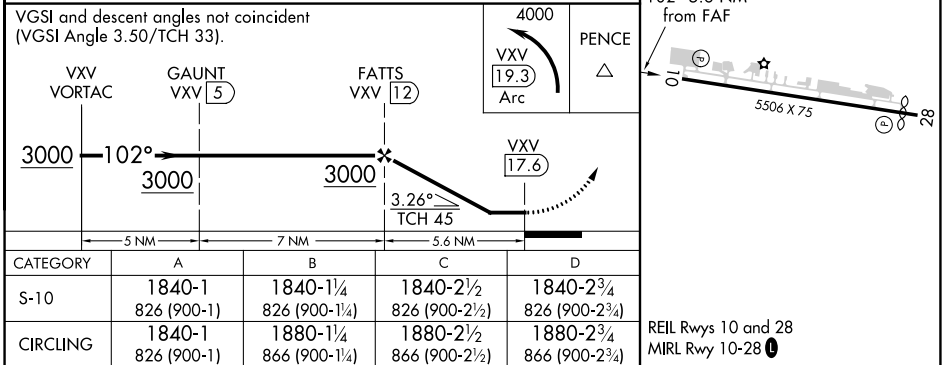
NA Procedure NA at night. Helicopter visibility reduction below 1 SM NA. When local altimeter setting not received, use Mc Ghee Tyson altimeter setting and increase all MDA 60 feet and increase S-18 and Circling Cats A,C and D visibilities 1/4 mile.

MISSED APPROACH: Climbing left turn to 4000 on VXV VORTAC 19.3 DME CCW Arc to PENCE INT/VXV 19.3 DME and hold, continue climb-in-hold to 4000.

AWOS-3 126.875	KNOXVILLE APP CON 132.8 360.8	UNICOM 123.0 (CTAF)
--------------------------	---	-------------------------------



Procedure NA for arrivals on VXV VORTAC airway radials 053 CW 102 (westbound).



SE-1, 27 JAN 2022 to 24 FEB 2022

SE-1, 27 JAN 2022 to 24 FEB 2022